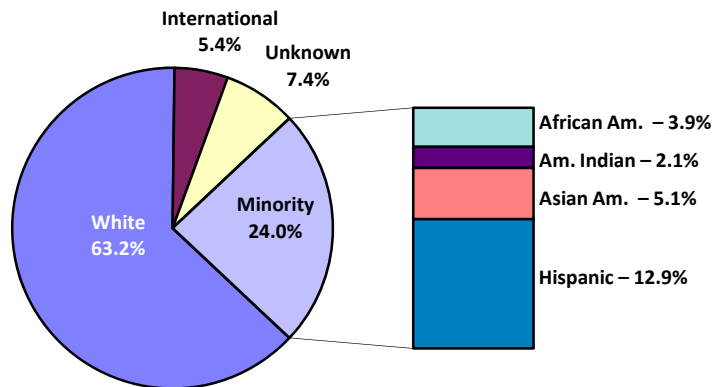


Total Enrollment ASU Total University

	Fall 1997		Fall 1999		Fall 2001		Fall 2003		Fall 2005		Fall 2007	
	Number	Percent	Number	Percent	Number	Percent	Number	Percent	Number	Percent	Number	Percent
TOTAL	49,243	100.0%	49,700	100.0%	52,759	100.0%	57,543	100.0%	61,033	100.0%	64,394	100.0%
African American	1,406	2.9%	1,445	2.9%	1,597	3.0%	2,005	3.5%	2,211	3.6%	2,489	3.9%
American Indian	958	1.9%	977	2.0%	1,086	2.1%	1,276	2.2%	1,453	2.4%	1,370	2.1%
Asian American	2,106	4.3%	2,164	4.4%	2,426	4.6%	2,757	4.8%	2,944	4.8%	3,259	5.1%
Hispanic	4,745	9.6%	5,008	10.1%	5,480	10.4%	6,649	11.6%	7,325	12.0%	8,323	12.9%
White	35,831	72.8%	35,203	70.8%	36,697	69.6%	39,109	68.0%	39,537	64.8%	40,709	63.2%
International	2,843	5.8%	2,959	6.0%	3,611	6.8%	3,292	5.7%	3,055	5.0%	3,481	5.4%
Unknown	1,354	2.7%	1,944	3.9%	1,862	3.5%	2,455	4.3%	4,508	7.4%	4,763	7.4%
MINORITY	9,215	18.7%	9,594	19.3%	10,589	20.1%	12,687	22.0%	13,933	22.8%	15,441	24.0%
WOMEN AS A % OF TOTAL	25,765	52.3%	26,530	53.4%	28,136	53.3%	30,666	53.3%	32,298	52.9%	33,538	52.1%
African American	793	1.6%	816	1.6%	918	1.7%	1,183	2.1%	1,269	2.1%	1,347	2.1%
American Indian	609	1.2%	641	1.3%	722	1.4%	828	1.4%	956	1.6%	860	1.3%
Asian American	1,105	2.2%	1,078	2.2%	1,244	2.4%	1,413	2.5%	1,519	2.5%	1,677	2.6%
Hispanic	2,686	5.5%	2,901	5.8%	3,213	6.1%	3,938	6.8%	4,299	7.0%	4,794	7.4%
White	18,917	38.4%	19,011	38.3%	19,897	37.7%	20,881	36.3%	20,818	34.1%	21,153	32.8%
International	1,002	2.0%	1,071	2.2%	1,213	2.3%	1,161	2.0%	1,134	1.9%	1,240	1.9%
Unknown	653	1.3%	1,012	2.0%	929	1.8%	1,262	2.2%	2,303	3.8%	2,467	3.8%
MINORITY	5,193	10.5%	5,436	10.9%	6,097	11.6%	7,362	12.8%	8,043	13.2%	8,678	13.5%

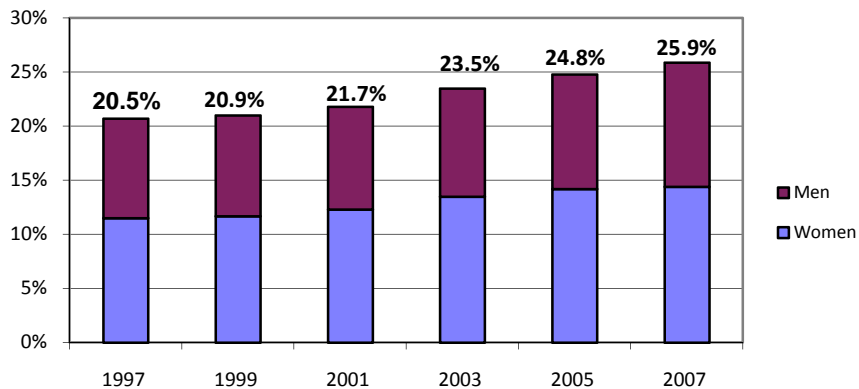
Fall 2007 Total Enrollment



Undergraduate Enrollment ASU Total University

	Fall 1997		Fall 1999		Fall 2001		Fall 2003		Fall 2005		Fall 2007	
	Number	Percent	Number	Percent	Number	Percent	Number	Percent	Number	Percent	Number	Percent
TOTAL	37,132	100.0%	37,988	100.0%	40,281	100.0%	45,430	100.0%	48,955	100.0%	51,311	100.0%
African American	1,128	3.0%	1,188	3.1%	1,303	3.2%	1,661	3.7%	1,893	3.9%	2,105	4.1%
American Indian	807	2.2%	818	2.2%	886	2.2%	1,038	2.3%	1,271	2.6%	1,137	2.2%
Asian American	1,688	4.5%	1,757	4.6%	2,005	5.0%	2,270	5.0%	2,516	5.1%	2,749	5.4%
Hispanic	3,980	10.7%	4,172	11.0%	4,567	11.3%	5,723	12.6%	6,464	13.2%	7,311	14.2%
White	27,307	73.5%	27,270	71.8%	28,703	71.3%	31,852	70.1%	33,536	68.5%	34,209	66.7%
International	1,303	3.5%	1,291	3.4%	1,365	3.4%	1,265	2.8%	1,162	2.4%	1,198	2.3%
Unknown	919	2.5%	1,492	3.9%	1,452	3.6%	1,621	3.6%	2,113	4.3%	2,602	5.1%
MINORITY	7,603	20.5%	7,935	20.9%	8,761	21.7%	10,692	23.5%	12,144	24.8%	13,302	25.9%
WOMEN AS A % OF TOTAL	19,372	52.2%	20,351	53.6%	21,524	53.4%	24,188	53.2%	25,948	53.0%	26,692	52.0%
African American	614	1.7%	652	1.7%	731	1.8%	958	2.1%	1,066	2.2%	1,117	2.2%
American Indian	509	1.4%	534	1.4%	582	1.4%	666	1.5%	836	1.7%	706	1.4%
Asian American	905	2.4%	875	2.3%	1,017	2.5%	1,144	2.5%	1,285	2.6%	1,388	2.7%
Hispanic	2,238	6.0%	2,396	6.3%	2,633	6.5%	3,344	7.4%	3,762	7.7%	4,154	8.1%
White	14,160	38.1%	14,622	38.5%	15,335	38.1%	16,779	36.9%	17,517	35.8%	17,601	34.3%
International	508	1.4%	496	1.3%	490	1.2%	488	1.1%	456	0.9%	442	0.9%
Unknown	438	1.2%	776	2.0%	736	1.8%	809	1.8%	1,026	2.1%	1,284	2.5%
MINORITY	4,266	11.5%	4,457	11.7%	4,963	12.3%	6,112	13.5%	6,949	14.2%	7,365	14.4%

Minority Percentage of Undergraduate Enrollment

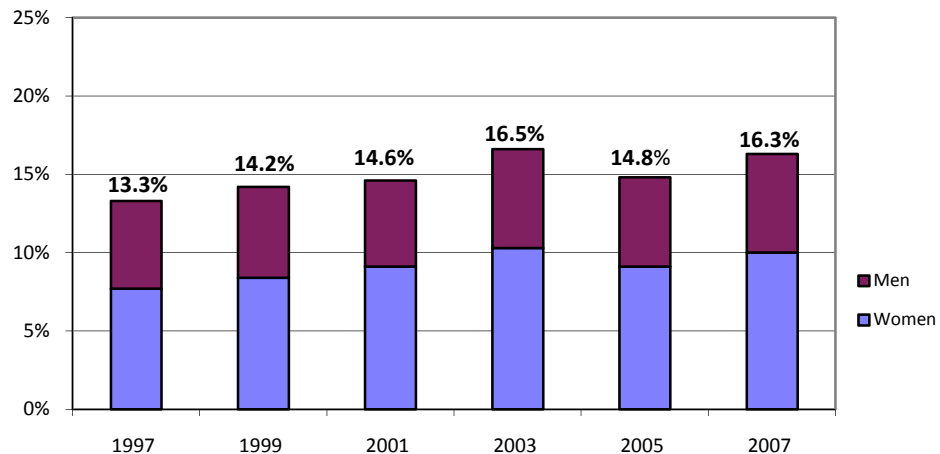


Graduate Enrollment ASU Total University

	Fall 1997		Fall 1999		Fall 2001		Fall 2003		Fall 2005		Fall 2007	
	Number	Percent	Number	Percent	Number	Percent	Number	Percent	Number	Percent	Number	Percent
TOTAL	12,111	100.0%	11,712	100.0%	12,478	100.0%	12,113	100.0%	12,078	100.0%	13,083	100.0%
African American	278	2.3%	257	2.2%	294	2.4%	344	2.8%	318	2.6%	384	2.9%
American Indian	151	1.2%	159	1.4%	200	1.6%	238	2.0%	182	1.5%	233	1.8%
Asian American	418	3.5%	407	3.5%	421	3.4%	487	4.0%	428	3.5%	510	3.9%
Hispanic	765	6.3%	836	7.1%	913	7.3%	926	7.6%	861	7.1%	1,012	7.7%
White	8,524	70.4%	7,933	67.7%	7,994	64.1%	7,257	59.9%	6,001	49.7%	6,500	49.7%
International	1,540	12.7%	1,668	14.2%	2,246	18.0%	2,027	16.7%	1,893	15.7%	2,283	17.5%
Unknown	435	3.6%	452	3.9%	410	3.3%	834	6.9%	2,395	19.8%	2,161	16.5%
MINORITY	1,612	13.3%	1,659	14.2%	1,828	14.6%	1,995	16.5%	1,789	14.8%	2,139	16.3%

WOMEN AS A % OF TOTAL	Fall 1997		Fall 1999		Fall 2001		Fall 2003		Fall 2005		Fall 2007	
	Number	Percent	Number	Percent	Number	Percent	Number	Percent	Number	Percent	Number	Percent
	6,393	52.8%	6,179	52.8%	6,612	53.0%	6,478	53.5%	6,350	52.6%	6,846	52.3%
African American	179	1.5%	164	1.4%	187	1.5%	225	1.9%	203	1.7%	230	1.8%
American Indian	100	0.8%	107	0.9%	140	1.1%	162	1.3%	120	1.0%	154	1.2%
Asian American	200	1.7%	203	1.7%	227	1.8%	269	2.2%	234	1.9%	289	2.2%
Hispanic	448	3.7%	505	4.3%	580	4.6%	594	4.9%	537	4.4%	640	4.9%
White	4,757	39.3%	4,389	37.5%	4,562	36.6%	4,102	33.9%	3,301	27.3%	3,552	27.1%
International	494	4.1%	575	4.9%	723	5.8%	673	5.6%	678	5.6%	798	6.1%
Unknown	215	1.8%	236	2.0%	193	1.5%	453	3.7%	1,277	10.6%	1,183	9.0%
MINORITY	927	7.7%	979	8.4%	1,134	9.1%	1,250	10.3%	1,094	9.1%	1,313	10.0%

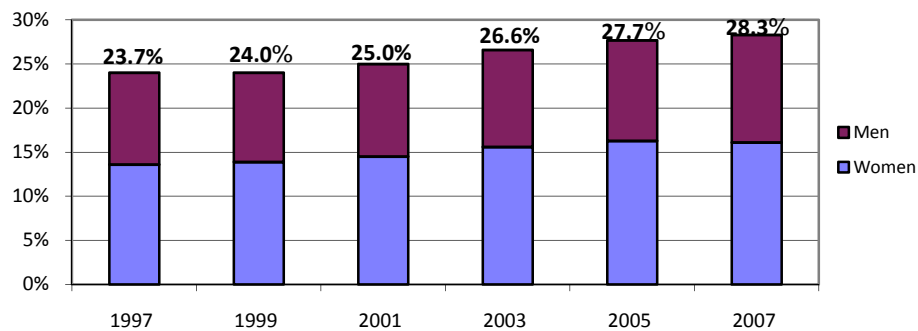
Minority Percentage of Graduate Enrollment



Resident Undergraduate Enrollment ASU Total University

	Fall 1997		Fall 1999		Fall 2001		Fall 2003		Fall 2005		Fall 2007	
	Number	Percent	Number	Percent	Number	Percent	Number	Percent	Number	Percent	Number	Percent
TOTAL	27,667	100.0%	28,887	100.0%	30,619	100.0%	34,854	100.0%	37,364	100.0%	38,446	100.0%
African American	890	3.2%	956	3.3%	1,040	3.4%	1,309	3.8%	1,429	3.8%	1,502	3.9%
American Indian	737	2.7%	757	2.6%	832	2.7%	968	2.8%	1,195	3.2%	1,052	2.7%
Asian American	1,408	5.1%	1,496	5.2%	1,686	5.5%	1,900	5.5%	2,043	5.5%	2,229	5.8%
Hispanic	3,525	12.7%	3,735	12.9%	4,097	13.4%	5,111	14.7%	5,697	15.2%	6,106	15.9%
White	20,304	73.4%	20,745	71.8%	21,710	70.9%	24,215	69.5%	25,233	67.5%	25,495	66.3%
International	65	0.2%	144	0.5%	153	0.5%	95	0.3%	97	0.3%	94	0.2%
Unknown	738	2.7%	1,054	3.6%	1,101	3.6%	1,256	3.6%	1,670	4.5%	1,968	5.1%
MINORITY	6,560	23.7%	6,944	24.0%	7,655	25.0%	9,288	26.6%	10,364	27.7%	10,889	28.3%
WOMEN AS A % OF TOTAL	14,757	53.3%	15,905	55.1%	16,877	55.1%	19,054	54.7%	20,407	54.6%	20,685	53.8%
African American	502	1.8%	550	1.9%	613	2.0%	785	2.3%	842	2.3%	846	2.2%
American Indian	472	1.7%	499	1.7%	548	1.8%	626	1.8%	790	2.1%	655	1.7%
Asian American	760	2.7%	749	2.6%	867	2.8%	983	2.8%	1,081	2.9%	1,150	3.0%
Hispanic	1,991	7.2%	2,185	7.6%	2,405	7.9%	3,046	8.7%	3,382	9.1%	3,522	9.2%
White	10,632	38.4%	11,297	39.1%	11,791	38.5%	12,921	37.1%	13,417	35.9%	13,463	35.0%
International	42	0.2%	77	0.3%	91	0.3%	57	0.2%	52	0.1%	51	0.1%
Unknown	358	1.3%	548	1.9%	562	1.8%	636	1.8%	843	2.3%	998	2.6%
MINORITY	3,725	13.5%	3,983	13.8%	4,433	14.5%	5,440	15.6%	6,095	16.3%	6,173	16.1%

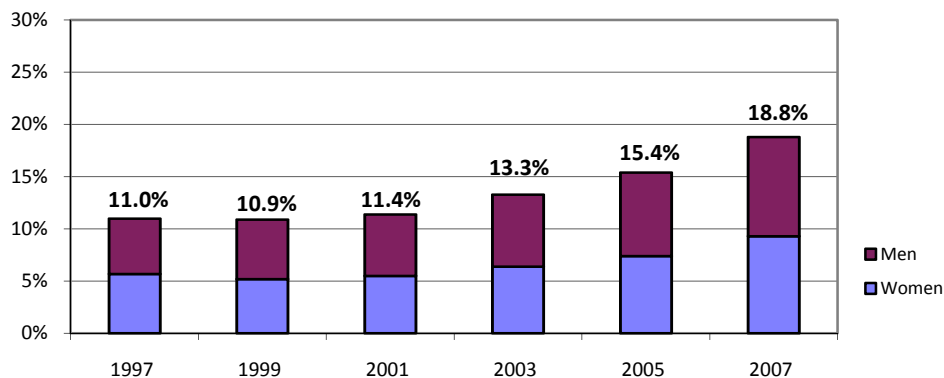
Minority Percentage of Resident Undergraduate Enrollment



Nonresident Undergraduate Enrollment ASU Total University

	Fall 1997		Fall 1999		Fall 2001		Fall 2003		Fall 2005		Fall 2007	
	Number	Percent	Number	Percent	Number	Percent	Number	Percent	Number	Percent	Number	Percent
TOTAL	9,465	100.0%	9,101	100.0%	9,662	100.0%	10,576	100.0%	11,591	100.0%	12,865	100.0%
African American	238	2.5%	232	2.5%	263	2.7%	352	3.3%	464	4.0%	603	4.7%
American Indian	70	0.7%	61	0.7%	54	0.6%	70	0.7%	76	0.7%	85	0.7%
Asian American	280	3.0%	261	2.9%	319	3.3%	370	3.5%	473	4.1%	520	4.0%
Hispanic	455	4.8%	437	4.8%	470	4.9%	612	5.8%	767	6.6%	1,205	9.4%
White	7,003	74.0%	6,525	71.7%	6,993	72.4%	7,637	72.2%	8,303	71.6%	8,714	67.7%
International	1,238	13.1%	1,147	12.6%	1,212	12.5%	1,170	11.1%	1,065	9.2%	1,104	8.6%
Unknown	181	1.9%	438	4.8%	351	3.6%	365	3.5%	443	3.8%	634	4.9%
MINORITY	1,043	11.0%	991	10.9%	1,106	11.4%	1,404	13.3%	1,780	15.4%	2,413	18.8%
WOMEN AS A % OF TOTAL	4,615	48.8%	4,446	48.9%	4,647	48.1%	5,134	48.5%	5,541	47.8%	6,007	46.7%
African American	112	1.2%	102	1.1%	118	1.2%	173	1.6%	224	1.9%	271	2.1%
American Indian	37	0.4%	35	0.4%	34	0.4%	40	0.4%	46	0.4%	51	0.4%
Asian American	145	1.5%	126	1.4%	150	1.6%	161	1.5%	204	1.8%	238	1.8%
Hispanic	247	2.6%	211	2.3%	228	2.4%	298	2.8%	380	3.3%	632	4.9%
White	3,528	37.3%	3,325	36.5%	3,544	36.7%	3,858	36.5%	4,100	35.4%	4,138	32.2%
International	466	4.9%	419	4.6%	399	4.1%	431	4.1%	404	3.5%	391	3.0%
Unknown	80	0.8%	228	2.5%	174	1.8%	173	1.6%	183	1.6%	286	2.2%
MINORITY	541	5.7%	474	5.2%	530	5.5%	672	6.4%	854	7.4%	1,192	9.3%

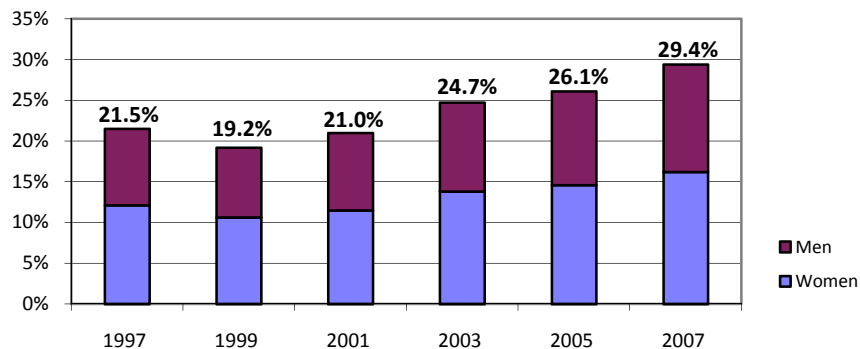
Minority Percentage of Nonresident Undergraduate Enrollment



New First-Time Freshmen ASU Total University

	Fall 1997		Fall 1999		Fall 2001		Fall 2003		Fall 2005		Fall 2007	
	Number	Percent	Number	Percent	Number	Percent	Number	Percent	Number	Percent	Number	Percent
TOTAL	5,257	100.0%	5,968	100.0%	6,586	100.0%	7,647	100.0%	8,467	100.0%	9,274	100.0%
African American	188	3.6%	170	2.8%	211	3.2%	310	4.1%	363	4.3%	432	4.7%
American Indian	129	2.5%	115	1.9%	137	2.1%	156	2.0%	211	2.5%	198	2.1%
Asian American	277	5.3%	279	4.7%	354	5.4%	419	5.5%	480	5.7%	569	6.1%
Hispanic	534	10.2%	584	9.8%	679	10.3%	1,007	13.2%	1,155	13.6%	1,525	16.4%
White	3,928	74.7%	4,101	68.7%	4,829	73.3%	5,363	70.1%	5,720	67.6%	6,049	65.2%
International	97	1.8%	120	2.0%	149	2.3%	131	1.7%	118	1.4%	172	1.9%
Unknown	104	2.0%	599	10.0%	227	3.4%	261	3.4%	420	5.0%	329	3.5%
MINORITY	1,128	21.5%	1,148	19.2%	1,381	21.0%	1,892	24.7%	2,209	26.1%	2,724	29.4%
WOMEN AS A % OF TOTAL	2,799	53.2%	3,250	54.5%	3,486	52.9%	4,082	53.4%	4,472	52.8%	4,863	52.4%
African American	110	2.1%	93	1.6%	107	1.6%	192	2.5%	215	2.5%	229	2.5%
American Indian	92	1.8%	68	1.1%	89	1.4%	97	1.3%	131	1.5%	117	1.3%
Asian American	160	3.0%	129	2.2%	181	2.7%	206	2.7%	229	2.7%	275	3.0%
Hispanic	273	5.2%	341	5.7%	379	5.8%	562	7.3%	660	7.8%	878	9.5%
White	2,072	39.4%	2,252	37.7%	2,565	38.9%	2,847	37.2%	2,999	35.4%	3,126	33.7%
International	35	0.7%	39	0.7%	47	0.7%	48	0.6%	39	0.5%	54	0.6%
Unknown	57	1.1%	328	5.5%	118	1.8%	130	1.7%	199	2.4%	184	2.0%
MINORITY	635	12.1%	631	10.6%	756	11.5%	1,057	13.8%	1,235	14.6%	1,499	16.2%

Minority Percentage of New First-time Freshmen



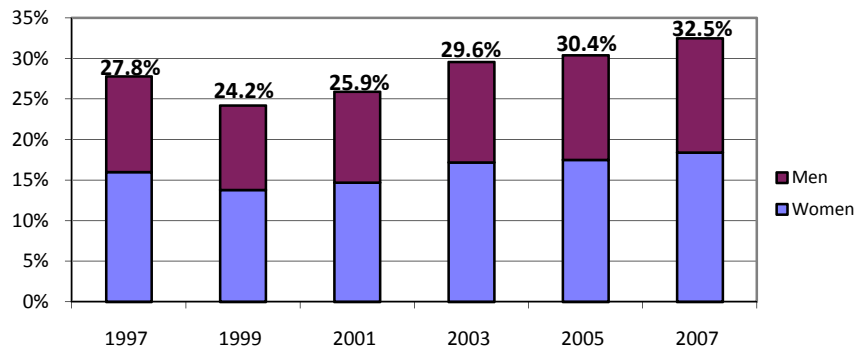
New Resident First-Time Freshmen

ASU Total University

	Fall 1997		Fall 1999		Fall 2001		Fall 2003		Fall 2005		Fall 2007	
	Number	Percent	Number	Percent	Number	Percent	Number	Percent	Number	Percent	Number	Percent
TOTAL	3,183	100.0%	3,842	100.0%	4,163	100.0%	4,831	100.0%	5,466	100.0%	6,031	100.0%
African American	132	4.1%	114	3.0%	142	3.4%	197	4.1%	207	3.8%	248	4.1%
American Indian	120	3.8%	104	2.7%	113	2.7%	137	2.8%	187	3.4%	167	2.8%
Asian American	199	6.3%	224	5.8%	269	6.5%	316	6.5%	344	6.3%	431	7.1%
Hispanic	435	13.7%	486	12.6%	556	13.4%	782	16.2%	923	16.9%	1,114	18.5%
White	2,226	69.9%	2,554	66.5%	2,921	70.2%	3,232	66.9%	3,498	64.0%	3,851	63.9%
International	12	0.4%	23	0.6%	13	0.3%	15	0.3%	15	0.3%	17	0.3%
Unknown	59	1.9%	337	8.8%	149	3.6%	152	3.1%	292	5.3%	203	3.4%
MINORITY	886	27.8%	928	24.2%	1,080	25.9%	1,432	29.6%	1,661		1,960	32.5%

WOMEN AS A % OF TOTAL	Fall 1997		Fall 1999		Fall 2001		Fall 2003		Fall 2005		Fall 2007	
	Number	Percent	Number	Percent	Number	Percent	Number	Percent	Number	Percent	Number	Percent
	1,737	54.6%	2,180	56.7%	2,248	54.0%	2,627	54.4%	2,995	54.8%	3,279	54.4%
African American	82	2.6%	71	1.8%	77	1.8%	136	2.8%	128	2.3%	146	2.4%
American Indian	87	2.7%	60	1.6%	75	1.8%	84	1.7%	114	2.1%	97	1.6%
Asian American	118	3.7%	102	2.7%	143	3.4%	159	3.3%	172	3.1%	212	3.5%
Hispanic	222	7.0%	297	7.7%	316	7.6%	453	9.4%	544	10.0%	654	10.8%
White	1,188	37.3%	1,452	37.8%	1,550	37.2%	1,714	35.5%	1,884	34.5%	2,043	33.9%
International	8	0.3%	9	0.2%	9	0.2%	8	0.2%	5	0.1%	9	0.1%
Unknown	32	1.0%	189	4.9%	78	1.9%	73	1.5%	148	2.7%	118	2.0%
MINORITY	509	16.0%	530	13.8%	611	14.7%	832	17.2%	958	17.5%	1,109	18.4%

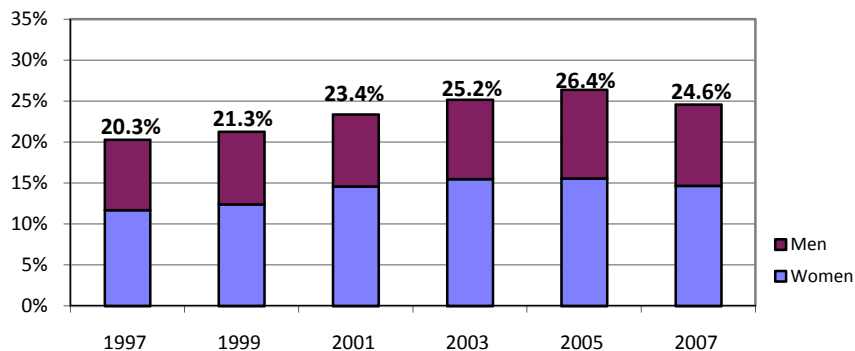
Minority Percentage of New Resident First-time Freshmen



New Transfers ASU Total University

	Fall 1997		Fall 1999		Fall 2001		Fall 2003		Fall 2005		Fall 2007	
	Number	Percent	Number	Percent	Number	Percent	Number	Percent	Number	Percent	Number	Percent
TOTAL	5,181	100.0%	4,743	100.0%	4,895	100.0%	5,506	100.0%	5,395	100.0%	4,910	100.0%
African American	145	2.8%	157	3.3%	166	3.4%	246	4.5%	245	4.5%	186	3.8%
American Indian	132	2.5%	120	2.5%	164	3.4%	169	3.1%	179	3.3%	127	2.6%
Asian American	215	4.1%	163	3.4%	186	3.8%	199	3.6%	221	4.1%	170	3.5%
Hispanic	561	10.8%	568	12.0%	629	12.8%	772	14.0%	778	14.4%	723	14.7%
White	3,798	73.3%	3,305	69.7%	3,382	69.1%	3,706	67.3%	3,569	66.2%	2,773	56.5%
International	200	3.9%	171	3.6%	196	4.0%	173	3.1%	137	2.5%	95	1.9%
Unknown	130	2.5%	259	5.5%	172	3.5%	241	4.4%	266	4.9%	836	17.0%
MINORITY	1,053	20.3%	1,008	21.3%	1,145	23.4%	1,386	25.2%	1,423	26.4%	1,206	24.6%
WOMEN AS A % OF TOTAL	Fall 1997		Fall 1999		Fall 2001		Fall 2003		Fall 2005		Fall 2007	
	Number	Percent	Number	Percent	Number	Percent	Number	Percent	Number	Percent	Number	Percent
WOMEN AS A % OF TOTAL	2,824	54.5%	2,646	55.8%	2,712	55.4%	3,045	55.3%	2,904	53.8%	2,635	53.7%
African American	78	1.5%	94	2.0%	107	2.2%	135	2.5%	121	2.2%	110	2.2%
American Indian	84	1.6%	82	1.7%	106	2.2%	121	2.2%	120	2.2%	88	1.8%
Asian American	111	2.1%	76	1.6%	104	2.1%	119	2.2%	121	2.2%	102	2.1%
Hispanic	332	6.4%	334	7.0%	391	8.0%	481	8.7%	477	8.8%	421	8.6%
White	2,068	39.9%	1,855	39.1%	1,848	37.8%	1,981	36.0%	1,878	34.8%	1,472	30.0%
International	91	1.8%	72	1.5%	85	1.7%	82	1.5%	60	1.1%	42	0.9%
Unknown	60	1.2%	133	2.8%	71	1.5%	126	2.3%	127	2.4%	400	8.1%
MINORITY	605	11.7%	586	12.4%	708	14.5%	856	15.5%	839	15.6%	721	14.7%

Minority Percentage of New Transfer Students

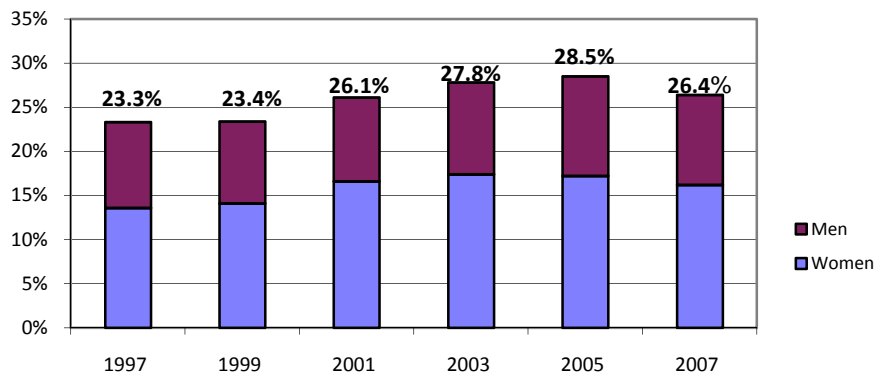


New Resident Transfers

ASU Total University

	Fall 1997		Fall 1999		Fall 2001		Fall 2003		Fall 2005		Fall 2007	
	Number	Percent	Number	Percent	Number	Percent	Number	Percent	Number	Percent	Number	Percent
TOTAL	3,949	100.0%	3,814	100.0%	3,941	100.0%	4,493	100.0%	4,252	100.0%	3,914	100.0%
African American	117	3.0%	133	3.5%	140	3.6%	203	4.5%	188	4.4%	141	3.6%
American Indian	123	3.1%	111	2.9%	158	4.0%	160	3.6%	168	4.0%	120	3.1%
Asian American	177	4.5%	134	3.5%	153	3.9%	166	3.7%	174	4.1%	133	3.4%
Hispanic	504	12.8%	516	13.5%	577	14.6%	719	16.0%	681	16.0%	641	16.4%
White	2,914	73.8%	2,692	70.6%	2,748	69.7%	3,039	67.6%	2,813	66.2%	2,217	56.6%
International	12	0.3%	25	0.7%	24	0.6%	10	0.2%	13	0.3%	7	0.2%
Unknown	102	2.6%	203	5.3%	141	3.6%	196	4.4%	215	5.1%	655	16.7%
MINORITY	921	23.3%	894	23.4%	1,028	26.1%	1,248	27.8%	1,211	28.5%	1,035	26.4%
WOMEN AS A % OF TOTAL	2,209	55.9%	2,181	57.2%	2,246	57.0%	2,554	56.8%	2,381	56.0%	2,166	55.3%
African American	63	1.6%	84	2.2%	98	2.5%	109	2.4%	98	2.3%	86	2.2%
American Indian	80	2.0%	76	2.0%	100	2.5%	117	2.6%	115	2.7%	86	2.2%
Asian American	92	2.3%	64	1.7%	86	2.2%	101	2.2%	98	2.3%	82	2.1%
Hispanic	303	7.7%	313	8.2%	367	9.3%	456	10.1%	421	9.9%	380	9.7%
White	1,613	40.8%	1,524	40.0%	1,528	38.8%	1,654	36.8%	1,530	36.0%	1,212	31.0%
International	9	0.2%	16	0.4%	14	0.4%	8	0.2%	12	0.3%	3	0.1%
Unknown	49	1.2%	104	2.7%	53	1.3%	109	2.4%	107	2.5%	317	8.1%
MINORITY	538	13.6%	537	14.1%	651	16.5%	783	17.4%	732	17.2%	634	16.2%

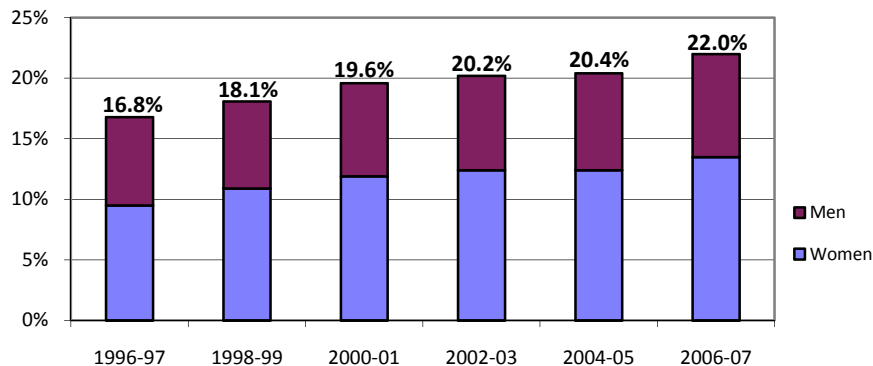
Minority Percentage of New Resident Transfers



Baccalaureate Degrees ASU Total University

	1996-97		1998-99		2000-01		2002-03		2004-05		2006-07	
	Number	Percent	Number	Percent	Number	Percent	Number	Percent	Number	Percent	Number	Percent
TOTAL	6,880	100.0%	7,507	100.0%	7,742	100.0%	8,566	100.0%	9,729	100.0%	10,137	100.0%
African American	146	2.1%	153	2.0%	232	3.0%	245	2.9%	273	2.8%	307	3.0%
American Indian	99	1.4%	123	1.6%	134	1.7%	150	1.8%	164	1.7%	178	1.8%
Asian American	268	3.9%	330	4.4%	354	4.6%	396	4.6%	463	4.8%	503	5.0%
Hispanic	645	9.4%	752	10.0%	798	10.3%	943	11.0%	1,085	11.2%	1,244	12.3%
White	5,253	76.4%	5,691	75.8%	5,769	74.5%	6,283	73.3%	7,061	72.6%	7,281	71.8%
International	271	3.9%	265	3.5%	298	3.8%	297	3.5%	297	3.1%	235	2.3%
Unknown	198	2.9%	193	2.6%	157	2.0%	252	2.9%	386	4.0%	389	3.8%
MINORITY	1,158	16.8%	1,358	18.1%	1,518	19.6%	1,734	20.2%	1,985	20.4%	2,232	22.0%
WOMEN AS A % OF TOTAL	1996-97		1998-99		2000-01		2002-03		2004-05		2006-07	
	Number	Percent	Number	Percent	Number	Percent	Number	Percent	Number	Percent	Number	Percent
WOMEN AS A % OF TOTAL	3,716	54.0%	4,161	55.4%	4,411	57.0%	4,890	57.1%	5,520	56.7%	5,703	56.3%
African American	86	1.3%	93	1.2%	141	1.8%	146	1.7%	170	1.7%	192	1.9%
American Indian	64	0.9%	71	0.9%	87	1.1%	106	1.2%	119	1.2%	123	1.2%
Asian American	134	1.9%	199	2.7%	188	2.4%	223	2.6%	236	2.4%	273	2.7%
Hispanic	372	5.4%	455	6.1%	504	6.5%	586	6.8%	679	7.0%	780	7.7%
White	2,829	41.1%	3,129	41.7%	3,288	42.5%	3,575	41.7%	3,972	40.8%	4,033	39.8%
International	119	1.7%	119	1.6%	126	1.6%	110	1.3%	131	1.3%	97	1.0%
Unknown	112	1.6%	95	1.3%	77	1.0%	144	1.7%	213	2.2%	205	2.0%
MINORITY	656	9.5%	818	10.9%	920	11.9%	1,061	12.4%	1,204	12.4%	1,368	13.5%

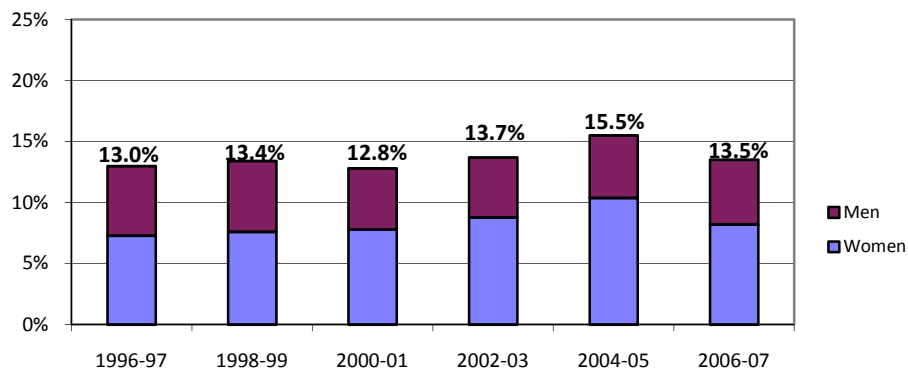
Minority Percentage of Baccalaureate Degrees Awarded



Graduate Degrees ASU Total University

	1996-97		1998-99		2000-01		2002-03		2004-05		2006-07	
	Number	Percent	Number	Percent	Number	Percent	Number	Percent	Number	Percent	Number	Percent
TOTAL	2,676	100.0%	2,938	100.0%	2,870	100.0%	3,237	100.0%	3,092	100.0%	3,492	100.0%
African American	56	2.1%	82	2.8%	45	1.6%	65	2.0%	84	2.7%	80	2.3%
American Indian	51	1.9%	29	1.0%	37	1.3%	70	2.2%	72	2.3%	45	1.3%
Asian American	87	3.3%	99	3.4%	102	3.6%	114	3.5%	101	3.3%	116	3.3%
Hispanic	153	5.7%	185	6.3%	184	6.4%	195	6.0%	221	7.1%	230	6.6%
White	1,807	67.5%	1,931	65.7%	1,860	64.8%	2,061	63.7%	1,766	57.1%	1,673	47.9%
International	445	16.6%	512	17.4%	583	20.3%	642	19.8%	553	17.9%	599	17.2%
Unknown	77	2.9%	100	3.4%	59	2.1%	90	2.8%	295	9.5%	749	21.4%
MINORITY	347	13.0%	395	13.4%	368	12.8%	444	13.7%	478	15.5%	471	13.5%
WOMEN AS A % OF TOTAL	1,377	51.5%	1,490	50.7%	1,414	49.3%	1,631	50.4%	1,644	53.2%	1,797	51.5%
African American	31	1.2%	49	1.7%	33	1.1%	40	1.2%	56	1.8%	53	1.5%
American Indian	35	1.3%	17	0.6%	26	0.9%	55	1.7%	52	1.7%	30	0.9%
Asian American	48	1.8%	53	1.8%	53	1.8%	65	2.0%	62	2.0%	63	1.8%
Hispanic	82	3.1%	105	3.6%	113	3.9%	125	3.9%	152	4.9%	140	4.0%
White	1,012	37.8%	1,057	36.0%	971	33.8%	1,114	34.4%	978	31.6%	907	26.0%
International	132	4.9%	156	5.3%	183	6.4%	196	6.1%	183	5.9%	213	6.1%
Unknown	37	1.4%	53	1.8%	35	1.2%	36	1.1%	161	5.2%	391	11.2%
MINORITY	196	7.3%	224	7.6%	225	7.8%	285	8.8%	322	10.4%	286	8.2%

Minority Percentage of Graduate Degrees Awarded

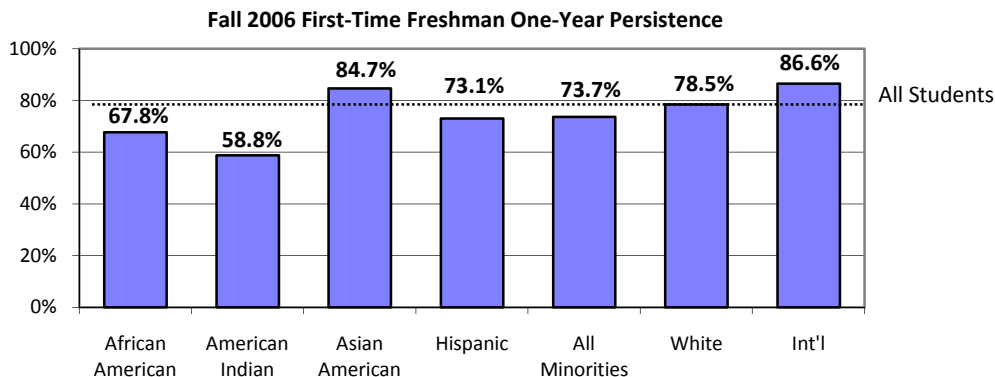


One-Year Persistence Rates for First-Time Full-Time Freshmen ASU Total University

First-time freshmen are new degree-seeking undergraduates who graduated from high school the previous year and new freshmen with fewer than 12 transfer credits.

	1996		1998		2000		2002		2004		2006	
	No. Entering	% Persisting	No. Entering	% Persisting	No. Entering	% Persisting	No. Entering	% Persisting	No. Entering	% Persisting	No. Entering	% Persisting
TOTAL	4,060	75.2%	4,772	75.2%	5,754	76.3%	6,421	76.7%	7,293	79.0%	8,533	77.2%
African American	121	80.2%	143	76.9%	187	67.9%	204	70.6%	249	73.9%	394	67.8%
American Indian	93	69.9%	104	67.3%	111	57.7%	136	61.8%	144	64.6%	177	58.8%
Asian American	203	81.8%	244	81.1%	305	84.6%	336	85.4%	379	83.4%	517	84.7%
Hispanic	454	76.7%	530	72.6%	633	75.0%	764	74.2%	942	77.9%	1,259	73.1%
White	3,003	73.9%	3,484	75.2%	4,170	76.6%	4,559	77.0%	5,111	79.2%	5,722	78.5%
International	100	91.0%	139	81.3%	124	81.5%	101	83.2%	113	89.4%	142	86.6%
Unknown	86	80.2%	128	73.4%	224	76.8%	321	76.3%	355	79.7%	322	75.8%
MINORITY	871	77.6%	1,021	74.7%	1,236	74.8%	1,440	75.1%	1,714	77.4%	2,347	73.7%

	1996		1998		2000		2002		2004		2006	
	No. Entering	% Persisting	No. Entering	% Persisting	No. Entering	% Persisting	No. Entering	% Persisting	No. Entering	% Persisting	No. Entering	% Persisting
WOMEN	2,138	76.8%	2,572	76.8%	3,071	77.8%	3,561	77.2%	3,998	79.3%	4,556	77.2%
African American	65	84.6%	69	81.2%	106	73.6%	116	71.6%	159	76.7%	206	67.0%
American Indian	60	70.0%	68	72.1%	66	57.6%	76	57.9%	91	63.7%	113	54.9%
Asian American	100	85.0%	134	82.1%	153	85.0%	190	86.3%	194	85.1%	276	84.4%
Hispanic	263	78.7%	299	73.2%	357	75.6%	465	74.6%	552	79.2%	734	73.3%
White	1,581	75.8%	1,890	76.9%	2,235	78.2%	2,498	77.7%	2,789	79.6%	3,024	78.9%
International	31	87.1%	53	83.0%	43	83.7%	41	82.9%	38	84.2%	43	95.3%
Unknown	38	76.3%	59	74.6%	111	81.1%	175	77.7%	175	78.3%	160	75.0%
MINORITY	488	79.7%	570	76.1%	682	75.7%	847	75.3%	996	78.5%	1,329	73.1%



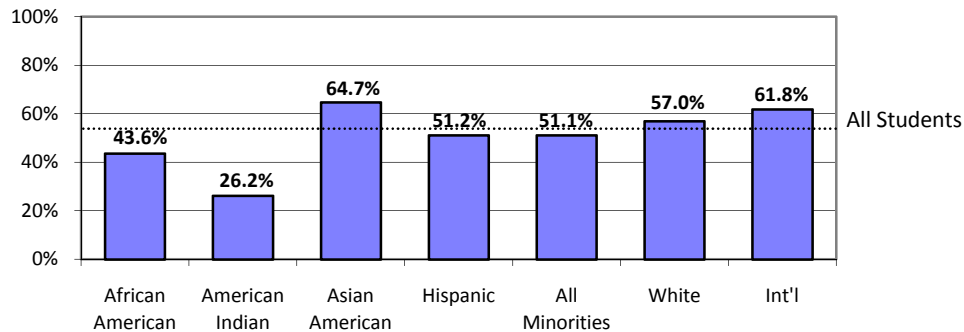
Six-Year Graduation Rates for First-Time Full-Time Freshmen ASU Total University

First-time freshmen are new degree-seeking undergraduates who graduated from high school the previous year and new freshmen with fewer than 12 transfer credits.

	1991		1993		1995		1997		1999		2001	
	No. Entering	% Graduating	No. Entering	% Graduating	No. Entering	% Graduating	No. Entering	% Graduating	No. Entering	% Graduating	No. Entering	% Graduating
TOTAL	2,448	48.4%	3,298	47.2%	3,947	49.2%	4,961	51.9%	5,667	55.0%	6,198	55.6%
African American	47	34.0%	71	26.8%	111	36.9%	174	44.8%	154	42.9%	202	43.6%
American Indian	39	23.1%	74	27.0%	94	28.7%	124	26.6%	106	25.5%	126	26.2%
Asian American	122	57.4%	155	56.1%	198	56.6%	261	58.6%	267	62.2%	337	64.7%
Hispanic	202	41.1%	318	44.3%	457	44.2%	507	44.4%	565	48.3%	645	51.2%
White	1,865	49.5%	2,489	47.9%	2,894	50.0%	3,703	53.5%	3,879	56.7%	4,538	57.0%
International	125	43.2%	110	54.5%	95	62.1%	92	57.6%	115	64.3%	144	61.8%
Unknown	48	58.3%	81	44.4%	98	55.1%	100	52.0%	581	53.2%	206	49.5%
MINORITY	410	43.4%	618	43.2%	860	44.4%	1,066	45.9%	1,092	48.7%	1,310	51.1%

	1991		1993		1995		1997		1999		2001	
	No. Entering	% Graduating	No. Entering	% Graduating	No. Entering	% Graduating	No. Entering	% Graduating	No. Entering	% Graduating	No. Entering	% Graduating
WOMEN	1,214	54.1%	1,637	52.5%	2,097	54.1%	2,652	56.4%	3,110	59.4%	3,347	59.7%
African American	21	38.1%	33	30.3%	62	40.3%	100	48.0%	86	50.0%	103	52.4%
American Indian	23	21.7%	47	29.8%	60	26.7%	88	31.8%	64	26.6%	84	31.0%
Asian American	67	58.2%	85	60.0%	109	59.6%	151	65.6%	125	69.6%	173	63.6%
Hispanic	108	47.2%	154	48.7%	256	49.6%	261	52.9%	334	53.3%	363	57.6%
White	933	56.4%	1,245	53.8%	1,528	55.4%	1,963	57.5%	2,148	60.8%	2,470	60.9%
International	37	43.2%	34	58.8%	35	71.4%	34	64.7%	38	68.4%	45	82.2%
Unknown	25	48.0%	39	51.3%	47	61.7%	55	56.4%	315	60.0%	109	53.2%
MINORITY	219	47.0%	319	47.0%	487	47.8%	600	52.2%	609	53.4%	723	55.2%

Fall 2001 First-Time Freshmen Graduating in 6 Years



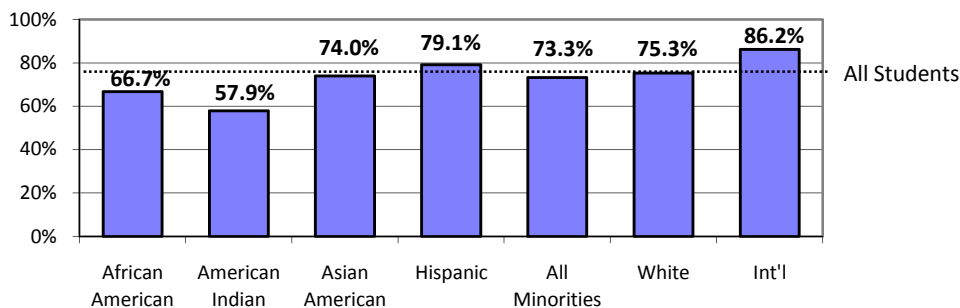
One-Year Persistence Rates for Full-Time Lower-Division Transfers ASU Total University

Lower-division transfers are new degree-seeking transfer students entering as freshmen or sophomores.

	1996		1998		2000		2002		2004		2006	
	No. Entering	% Persisting	No. Entering	% Persisting	No. Entering	% Persisting	No. Entering	% Persisting	No. Entering	% Persisting	No. Entering	% Persisting
TOTAL	1,637	75.0%	1,429	74.8%	1,386	75.5%	1,579	75.2%	1,451	77.1%	1,434	75.1%
African American	39	61.5%	41	61.0%	44	75.0%	49	67.3%	61	77.0%	63	66.7%
American Indian	32	65.6%	28	60.7%	31	58.1%	47	72.3%	28	53.6%	38	57.9%
Asian American	53	83.0%	51	80.4%	52	80.8%	48	81.3%	46	76.1%	73	74.0%
Hispanic	162	74.1%	164	68.9%	135	72.6%	175	74.9%	152	67.1%	163	79.1%
White	1,249	74.4%	1,021	75.1%	979	76.2%	1,114	74.1%	1,019	78.5%	993	75.3%
International	66	92.4%	75	89.3%	78	78.2%	84	85.7%	53	84.9%	58	86.2%
Unknown	36	77.8%	49	79.6%	67	71.6%	62	83.9%	92	81.5%	46	69.6%
MINORITY	286	73.1%	284	69.0%	262	72.9%	319	74.3%	287	69.3%	337	73.3%

	1996		1998		2000		2002		2004		2006	
	No. Entering	% Persisting	No. Entering	% Persisting	No. Entering	% Persisting	No. Entering	% Persisting	No. Entering	% Persisting	No. Entering	% Persisting
WOMEN	789	74.9%	732	75.5%	707	77.2%	771	76.5%	723	77.0%	732	76.2%
African American	23	60.9%	16	62.5%	27	70.4%	24	70.8%	31	80.6%	28	57.1%
American Indian	14	57.1%	18	44.4%	23	56.5%	27	74.1%	18	50.0%	30	63.3%
Asian American	25	80.0%	29	79.3%	28	89.3%	24	79.2%	25	64.0%	42	69.0%
Hispanic	86	73.3%	89	68.5%	80	72.5%	94	75.5%	83	63.9%	80	81.3%
White	602	75.6%	533	76.9%	492	78.7%	531	75.5%	496	79.8%	504	77.4%
International	19	89.5%	25	96.0%	21	76.2%	40	90.0%	28	82.1%	19	89.5%
Unknown	20	70.0%	22	77.3%	36	77.8%	31	83.9%	42	83.3%	29	75.9%
MINORITY	148	70.9%	152	67.1%	158	72.8%	169	75.1%	157	65.6%	180	71.7%

Fall 2006 Lower-Division Transfer One-Year Persistence



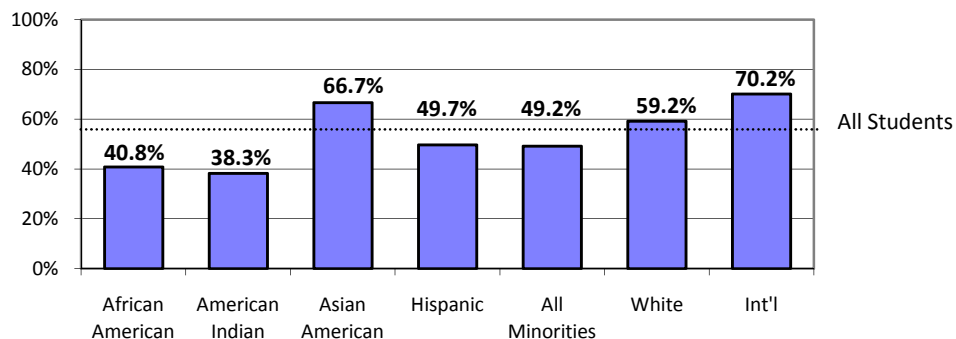
Five-Year Graduation Rates for Full-Time Lower-Division Transfers ASU Total University

Lower-division transfers are new degree-seeking transfer students entering as freshmen or sophomores.

	1992		1994		1996		1998		2000		2002	
	No. Entering	% Graduating	No. Entering	% Graduating	No. Entering	% Graduating	No. Entering	% Graduating	No. Entering	% Graduating	No. Entering	% Graduating
TOTAL	1,527	50.0%	1,832	51.6%	1,637	54.2%	1,429	60.3%	1,386	59.4%	1,579	57.6%
African American	47	36.2%	41	31.7%	39	35.9%	41	48.8%	44	59.1%	49	40.8%
American Indian	25	40.0%	27	29.6%	32	31.3%	28	32.1%	31	22.6%	47	38.3%
Asian American	35	51.4%	57	61.4%	53	60.4%	51	56.9%	52	55.8%	48	66.7%
Hispanic	123	48.8%	185	47.6%	162	48.1%	164	56.7%	135	57.0%	175	49.7%
White	1,185	49.0%	1,338	52.0%	1,249	54.7%	1,021	60.9%	979	61.7%	1,114	59.2%
International	80	77.5%	82	75.6%	66	77.3%	75	78.7%	78	59.0%	84	70.2%
Unknown	32	46.9%	102	43.1%	36	52.8%	49	61.2%	67	50.7%	62	56.5%
MINORITY	230	45.7%	310	46.5%	286	46.9%	284	53.2%	262	53.1%	319	49.2%

	1992		1994		1996		1998		2000		2002	
	No. Entering	% Graduating	No. Entering	% Graduating	No. Entering	% Graduating	No. Entering	% Graduating	No. Entering	% Graduating	No. Entering	% Graduating
WOMEN	766	51.7%	941	53.6%	789	57.4%	732	62.3%	707	64.4%	771	59.0%
African American	21	47.6%	20	55.0%	23	43.5%	16	62.5%	27	63.0%	24	50.0%
American Indian	12	41.7%	15	26.7%	14	35.7%	18	22.2%	23	26.1%	27	37.0%
Asian American	14	64.3%	29	69.0%	25	60.0%	29	62.1%	28	60.7%	24	58.3%
Hispanic	62	54.8%	100	50.0%	86	58.1%	89	55.1%	80	63.8%	94	53.2%
White	611	50.9%	692	53.0%	602	58.0%	533	64.4%	492	67.3%	531	60.3%
International	30	73.3%	37	81.1%	19	78.9%	25	80.0%	21	57.1%	40	75.0%
Unknown	16	31.3%	48	45.8%	20	45.0%	22	54.5%	36	58.3%	31	61.3%
MINORITY	109	53.2%	164	51.8%	148	54.1%	152	53.3%	158	57.6%	169	50.9%

Fall 2002 Lower-Division Transfers Graduating in 5 Years



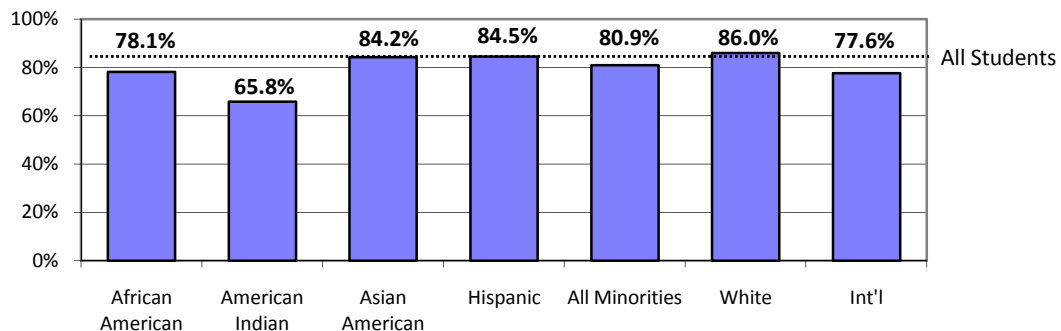
One-Year Persistence Rates for Full-Time Upper-Division Transfers ASU Total University

Upper-division transfers are new degree-seeking transfer students entering as juniors or seniors.

	1996		1998		2000		2002		2004		2006	
	No. Entering	% Persisting	No. Entering	% Persisting	No. Entering	% Persisting	No. Entering	% Persisting	No. Entering	% Persisting	No. Entering	% Persisting
TOTAL	1,887	81.1%	1,646	80.2%	1,685	81.6%	2,119	83.5%	2,266	85.7%	2,102	84.3%
African American	53	64.2%	48	81.3%	51	82.4%	77	74.0%	83	78.3%	105	78.1%
American Indian	65	67.7%	60	65.0%	55	72.7%	69	75.4%	80	73.8%	76	65.8%
Asian American	78	82.1%	57	89.5%	58	86.2%	62	88.7%	78	85.9%	95	84.2%
Hispanic	232	79.7%	194	80.9%	212	82.1%	283	86.2%	310	86.1%	316	84.5%
White	1,357	82.9%	1,198	80.3%	1,176	82.0%	1,485	84.0%	1,512	87.0%	1,367	86.0%
International	57	82.5%	52	82.7%	55	83.6%	67	80.6%	59	79.7%	58	77.6%
Unknown	45	68.9%	37	78.4%	78	75.6%	76	77.6%	144	85.4%	85	83.5%
MINORITY	428	76.4%	359	79.7%	376	81.4%	491	83.1%	551	83.1%	592	80.9%

	1996		1998		2000		2002		2004		2006	
	No. Entering	% Persisting	No. Entering	% Persisting	No. Entering	% Persisting	No. Entering	% Persisting	No. Entering	% Persisting	No. Entering	% Persisting
WOMEN	1,015	81.2%	897	80.7%	957	83.3%	1,229	84.1%	1,280	87.3%	1,183	83.9%
African American	33	66.7%	31	83.9%	30	86.7%	42	69.0%	47	80.9%	54	77.8%
American Indian	39	71.8%	42	69.0%	38	76.3%	50	80.0%	50	78.0%	54	64.8%
Asian American	47	87.2%	27	92.6%	33	84.8%	43	93.0%	35	82.9%	46	78.3%
Hispanic	140	81.4%	112	80.4%	135	83.7%	166	86.7%	189	88.9%	191	85.9%
White	704	82.2%	642	80.4%	655	83.8%	861	84.6%	855	88.3%	762	86.4%
International	31	83.9%	24	87.5%	20	90.0%	32	84.4%	23	87.0%	27	70.4%
Unknown	21	66.7%	19	89.5%	46	73.9%	35	74.3%	81	85.2%	49	77.6%
MINORITY	259	79.2%	212	80.2%	236	83.1%	301	84.1%	321	85.4%	345	80.3%

Fall 2006 Upper-Division Transfer One-Year Persistence



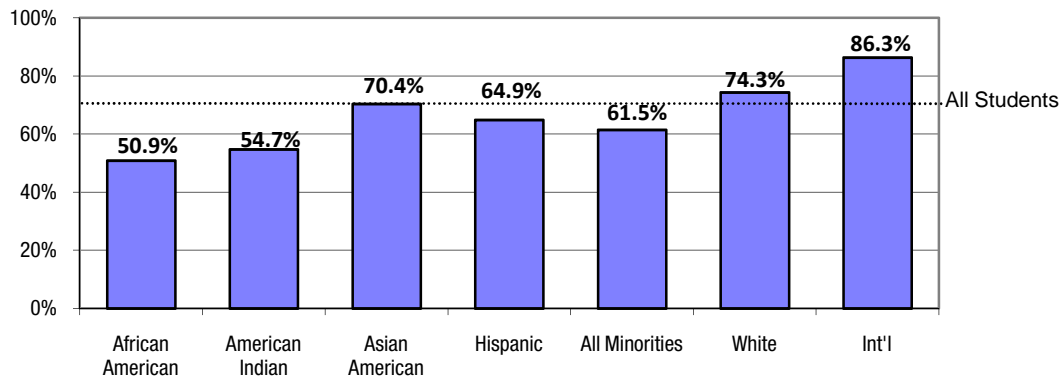
Four-Year Graduation Rates for Full-Time Upper-Division Transfers ASU Total University

Upper-division transfers are new degree-seeking transfer students entering as juniors or seniors.

	1993		1995		1997		1999		2001		2003	
	No. Entering	% Graduating	No. Entering	% Graduating	No. Entering	% Graduating	No. Entering	% Graduating	No. Entering	% Graduating	No. Entering	% Graduating
TOTAL	1,990	62.4%	1,906	65.6%	1,822	69.0%	1,723	69.2%	1,814	71.6%	2,179	71.0%
African American	45	46.7%	51	43.1%	50	54.0%	47	48.9%	58	51.7%	106	50.9%
American Indian	55	30.9%	50	42.0%	63	49.2%	67	52.2%	85	61.2%	95	54.7%
Asian American	65	58.5%	41	61.0%	90	67.8%	65	69.2%	70	67.1%	81	70.4%
Hispanic	185	60.5%	209	68.9%	185	69.2%	208	71.6%	259	73.4%	313	64.9%
White	1,495	64.2%	1,437	66.7%	1,312	70.4%	1,178	70.5%	1,204	73.3%	1,406	74.3%
International	79	68.4%	74	68.9%	77	81.8%	55	85.5%	73	71.2%	80	86.3%
Unknown	66	59.1%	44	65.9%	45	55.6%	103	61.2%	65	69.2%	98	68.4%
MINORITY	350	53.7%	351	60.4%	388	63.7%	387	65.1%	472	67.6%	595	61.5%

	1993		1995		1997		1999		2001		2003	
	No. Entering	% Graduating	No. Entering	% Graduating	No. Entering	% Graduating	No. Entering	% Graduating	No. Entering	% Graduating	No. Entering	% Graduating
WOMEN	1,022	66.7%	1,023	69.9%	994	71.4%	992	70.6%	1,033	73.8%	1,245	74.4%
African American	18	55.6%	32	43.8%	26	61.5%	33	51.5%	38	47.4%	57	59.6%
American Indian	38	36.8%	34	41.2%	41	51.2%	51	54.9%	55	60.0%	69	56.5%
Asian American	31	61.3%	22	63.6%	46	71.7%	28	82.1%	35	68.6%	46	69.6%
Hispanic	103	68.0%	122	73.0%	111	72.1%	131	73.3%	163	79.1%	189	70.4%
White	776	68.2%	767	71.4%	717	72.5%	666	71.3%	678	75.4%	798	77.7%
International	36	77.8%	26	80.8%	34	79.4%	25	92.0%	37	75.7%	44	86.4%
Unknown	20	60.0%	20	75.0%	19	68.4%	58	65.5%	27	70.4%	42	71.4%
MINORITY	190	59.5%	210	62.4%	224	67.0%	243	67.5%	291	70.1%	361	65.9%

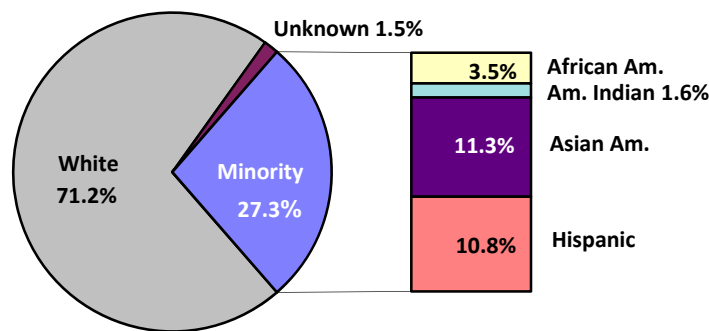
Fall 2003 Upper-Division Transfers Graduating in 4 Years



Employees ASU Total University

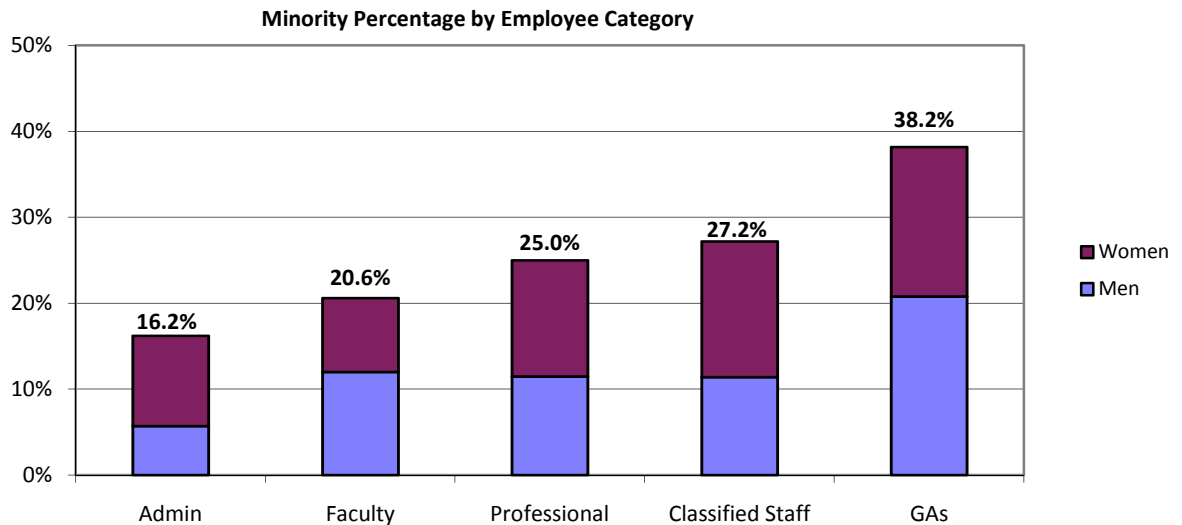
	Fall 2002		Fall 2003		Fall 2004		Fall 2005		Fall 2006		Fall 2007	
	Number	Percent	Number	Percent	Number	Percent	Number	Percent	Number	Percent	Number	Percent
TOTAL	10,921	100.0%	11,247	100.0%	11,423	100.0%	11,770	100.0%	12,218	100.0%	12,436	100.0%
African American	344	3.1%	367	3.3%	376	3.3%	413	3.5%	440	3.6%	439	3.5%
American Indian	193	1.8%	188	1.7%	199	1.7%	213	1.8%	211	1.7%	201	1.6%
Asian American	1,122	10.3%	1,228	10.9%	1,199	10.5%	1,263	10.7%	1,427	11.7%	1,411	11.3%
Hispanic	1,122	10.3%	1,171	10.4%	1,229	10.8%	1,289	11.0%	1,337	10.9%	1,347	10.8%
White	8,140	74.5%	8,293	73.7%	8,420	73.7%	8,592	73.0%	8,803	72.0%	8,853	71.2%
Unknown	N/A		N/A		N/A		N/A		N/A		185	1.5%
MINORITY	2,781	25.5%	2,954	26.3%	3,003	26.3%	3,178	27.0%	3,415	28.0%	3,398	27.3%
WOMEN AS A % OF TOTAL	Fall 2002		Fall 2003		Fall 2004		Fall 2005		Fall 2006		Fall 2007	
	Number	Percent	Number	Percent	Number	Percent	Number	Percent	Number	Percent	Number	Percent
WOMEN AS A % OF TOTAL	5,480	50.2%	5,656	50.3%	5,777	50.6%	5,968	50.7%	6,232	51.0%	6,342	51.0%
African American	185	1.7%	196	1.7%	212	1.9%	218	1.9%	248	2.0%	254	2.0%
American Indian	108	1.0%	96	0.9%	103	0.9%	111	0.9%	111	0.9%	101	0.8%
Asian American	419	3.8%	447	4.0%	467	4.1%	509	4.3%	576	4.7%	610	4.9%
Hispanic	615	5.6%	665	5.9%	681	6.0%	708	6.0%	726	5.9%	754	6.1%
White	4,153	38.0%	4,252	37.8%	4,314	37.8%	4,422	37.6%	4,571	37.4%	4,544	36.5%
Unknown	N/A		N/A		N/A		N/A		N/A		79	0.6%
MINORITY	1,327	12.2%	1,404	12.5%	1,463	12.8%	1,546	13.1%	1,661	13.6%	1,719	13.8%

Fall 2007 Total Employees



Fall 2007 Employee Categories ASU Total University

	Administrators		Faculty		Professionals		Classified Staff		GAs		Total	
	Number	Percent	Number	Percent	Number	Percent	Number	Percent	Number	Percent	Number	Percent
TOTAL	105	100.0%	2,970	100.0%	2,525	100.0%	4,281	100.0%	2,555	100.0%	12,436	100.0%
African American	7	6.7%	76	2.6%	105	4.2%	191	4.5%	60	2.3%	439	3.5%
American Indian	0	0.0%	34	1.1%	29	1.1%	121	2.8%	17	0.7%	201	1.6%
Asian American	2	1.9%	291	9.8%	246	9.7%	161	3.8%	711	27.8%	1,411	11.3%
Hispanic	8	7.6%	210	7.1%	252	10.0%	690	16.1%	187	7.3%	1,347	10.8%
White	88	83.8%	2,344	78.9%	1,878	74.4%	3,106	72.6%	1,437	56.2%	8,853	71.2%
Unknown	0	0.0%	15	0.5%	15	0.6%	12	0.3%	143	5.6%	185	1.5%
MINORITY	17	16.2%	611	20.6%	632	25.0%	1,163	27.2%	975	38.2%	3,398	27.3%
WOMEN AS A % OF TOTAL	Administrators		Faculty		Professionals		Classified Staff		GAs		Total	
	Number	Percent	Number	Percent	Number	Percent	Number	Percent	Number	Percent	Number	Percent
	51	48.6%	1,239	41.7%	1,394	55.2%	2,432	56.8%	1,226	48.0%	6,342	51.0%
African American	4	3.8%	44	1.5%	60	2.4%	112	2.6%	34	1.3%	254	2.0%
American Indian	0	0.0%	15	0.5%	16	0.6%	60	1.4%	10	0.4%	101	0.8%
Asian American	1	1.0%	100	3.4%	111	4.4%	108	2.5%	290	11.4%	610	4.9%
Hispanic	6	5.7%	95	3.2%	154	6.1%	393	9.2%	106	4.1%	754	6.1%
White	40	38.1%	980	33.0%	1,046	41.4%	1,751	40.9%	727	28.5%	4,544	36.5%
Unknown	0	0.0%	5	0.2%	7	0.3%	8	0.2%	59	2.3%	79	0.6%
MINORITY	11	10.5%	254	8.6%	341	13.5%	673	15.7%	440	17.2%	1,719	13.8%

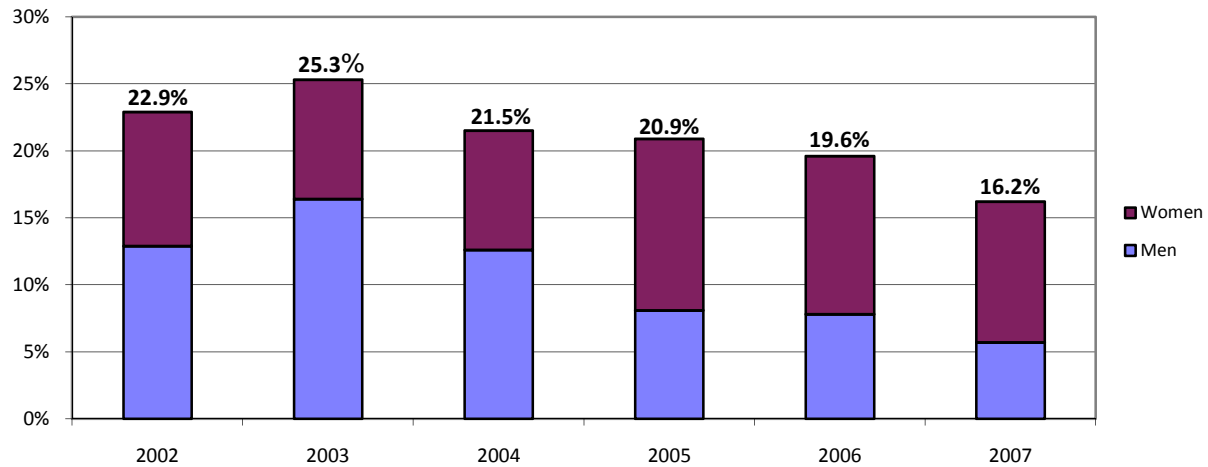


Administrators ASU Total University

(University employees in administrative positions who do not hold faculty rank.)

	Fall 2002		Fall 2003		Fall 2004		Fall 2005		Fall 2006		Fall 2007	
	Number	Percent	Number	Percent	Number	Percent	Number	Percent	Number	Percent	Number	Percent
TOTAL	70	100.0%	79	100.0%	79	100.0%	86	100.0%	102	100.0%	105	100.0%
African American	8	11.4%	9	11.4%	9	11.4%	9	10.5%	9	8.8%	7	6.7%
American Indian	0	0.0%	1	1.3%	0	0.0%	0	0.0%	0	0.0%	0	0.0%
Asian American	2	2.9%	2	2.5%	1	1.3%	2	2.3%	3	2.9%	2	1.9%
Hispanic	6	8.6%	8	10.1%	7	8.9%	7	8.1%	8	7.8%	8	7.6%
White	54	77.1%	59	74.7%	62	78.5%	68	79.1%	82	80.4%	88	83.8%
MINORITY	16	22.9%	20	25.3%	17	21.5%	18	20.9%	20	19.6%	17	16.2%
WOMEN AS A % OF TOTAL	37	52.9%	39	49.4%	39	49.4%	51	59.3%	53	52.0%	51	48.6%
African American	3	4.3%	3	3.8%	4	5.1%	5	5.8%	5	4.9%	4	3.8%
American Indian	0	0.0%	0	0.0%	0	0.0%	0	0.0%	0	0.0%	0	0.0%
Asian American	2	2.9%	2	2.5%	1	1.3%	2	2.3%	2	2.0%	1	1.0%
Hispanic	2	2.9%	2	2.5%	2	2.5%	4	4.7%	5	4.9%	6	5.7%
White	30	42.9%	32	40.5%	32	40.5%	40	46.5%	41	40.2%	40	38.1%
MINORITY	7	10.0%	7	8.9%	7	8.9%	11	12.8%	12	11.8%	11	10.5%

Minority Percentage of Administrators

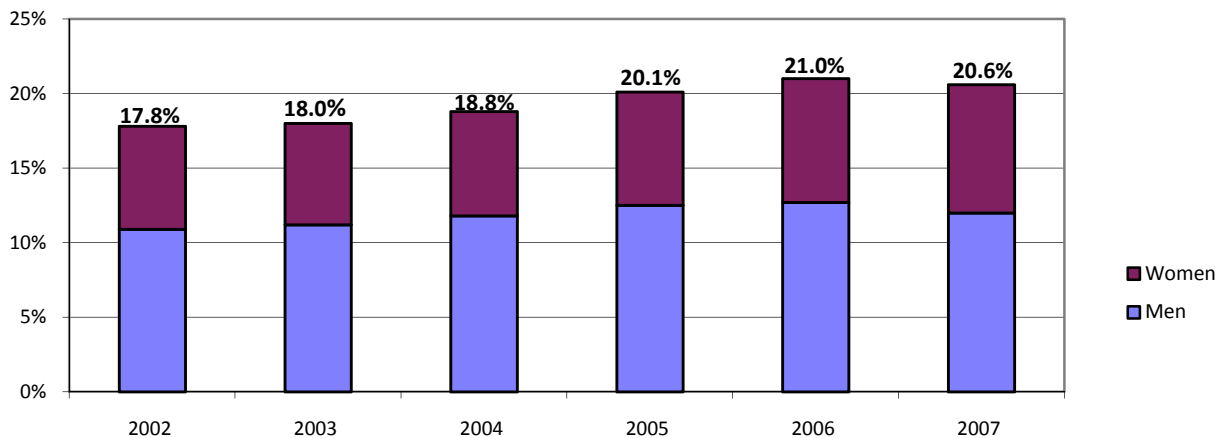


Faculty ASU Total University

(University employees holding a faculty rank of professor, associate professor, assistant professor, instructor, lecturer, or faculty associate, regardless of job title.)

	Fall 2002		Fall 2003		Fall 2004		Fall 2005		Fall 2006		Fall 2007	
	Number	Percent	Number	Percent	Number	Percent	Number	Percent	Number	Percent	Number	Percent
TOTAL	2,449	100.0%	2,484	100.0%	2,585	100.0%	2,734	100.0%	2,862	100.0%	2,970	100.0%
African American	59	2.4%	60	2.4%	63	2.4%	65	2.4%	76	2.7%	76	2.6%
American Indian	21	0.9%	28	1.1%	34	1.3%	38	1.4%	35	1.2%	34	1.1%
Asian American	193	7.9%	196	7.9%	217	8.4%	248	9.1%	280	9.8%	291	9.8%
Hispanic	163	6.7%	164	6.6%	173	6.7%	198	7.2%	210	7.3%	210	7.1%
White	2,013	82.2%	2,036	82.0%	2,098	81.2%	2,185	79.9%	2,261	79.0%	2,344	78.9%
Unknown	N/A		N/A		N/A		N/A		N/A		15	0.5%
MINORITY	436	17.8%	448	18.0%	487	18.8%	549	20.1%	601	21.0%	611	20.6%
WOMEN AS A % OF TOTAL	Fall 2002		Fall 2003		Fall 2004		Fall 2005		Fall 2006		Fall 2007	
	Number	Percent	Number	Percent	Number	Percent	Number	Percent	Number	Percent	Number	Percent
% OF TOTAL	962	39.3%	981	39.5%	1,025	39.7%	1,091	39.9%	1,165	40.7%	1,239	41.7%
African American	29	1.2%	28	1.1%	31	1.2%	31	1.1%	42	1.5%	44	1.5%
American Indian	11	0.4%	12	0.5%	14	0.5%	15	0.5%	14	0.5%	15	0.5%
Asian American	54	2.2%	59	2.4%	68	2.6%	80	2.9%	94	3.3%	100	3.4%
Hispanic	75	3.1%	71	2.9%	67	2.6%	81	3.0%	87	3.0%	95	3.2%
White	793	32.4%	811	32.6%	845	32.7%	884	32.3%	928	32.4%	980	33.0%
Unknown	N/A		N/A		N/A		N/A		N/A		5	0.2%
MINORITY	169	6.9%	170	6.8%	180	7.0%	207	7.6%	237	8.3%	254	8.6%

Minority Percentage of Faculty



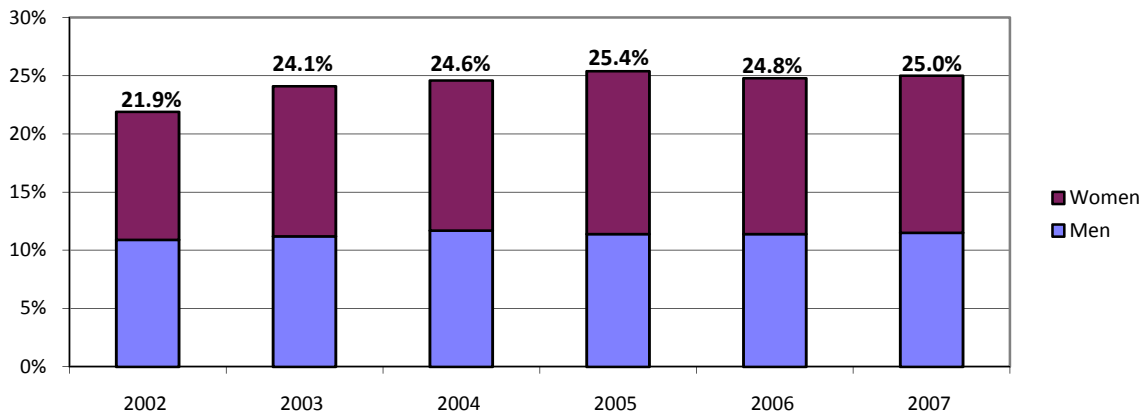
Professionals

ASU Total University

(University employees including academic advisors, postdoctoral scholars, librarians, computer systems analysts, research support staff, and business professionals.)

	Fall 2002		Fall 2003		Fall 2004		Fall 2005		Fall 2006		Fall 2007	
	Number	Percent	Number	Percent	Number	Percent	Number	Percent	Number	Percent	Number	Percent
TOTAL	1,350	100.0%	1,535	100.0%	1,661	100.0%	1,897	100.0%	2,166	100.0%	2,525	100.0%
African American	58	4.3%	65	4.2%	68	4.1%	76	4.0%	95	4.4%	105	4.2%
American Indian	23	1.7%	21	1.4%	19	1.1%	20	1.1%	24	1.1%	29	1.1%
Asian American	108	8.0%	134	8.7%	147	8.9%	185	9.8%	205	9.5%	246	9.7%
Hispanic	107	7.9%	150	9.8%	174	10.5%	201	10.6%	214	9.9%	252	10.0%
White	1,054	78.1%	1,165	75.9%	1,253	75.4%	1,415	74.6%	1,628	75.2%	1,878	74.4%
Unknown	N/A		N/A		N/A		N/A		N/A		15	0.6%
MINORITY	296	21.9%	370	24.1%	408	24.6%	482	25.4%	538	24.8%	632	25.0%
WOMEN AS A % OF TOTAL	Fall 2002		Fall 2003		Fall 2004		Fall 2005		Fall 2006		Fall 2007	
	Number	Percent	Number	Percent	Number	Percent	Number	Percent	Number	Percent	Number	Percent
% OF TOTAL	729	54.0%	839	54.7%	891	53.6%	1,057	55.7%	1,219	56.3%	1,394	55.2%
African American	28	2.1%	32	2.1%	35	2.1%	41	2.2%	60	2.8%	60	2.4%
American Indian	13	1.0%	12	0.8%	10	0.6%	11	0.6%	12	0.6%	16	0.6%
Asian American	40	3.0%	45	2.9%	47	2.8%	75	4.0%	82	3.8%	111	4.4%
Hispanic	67	5.0%	109	7.1%	122	7.3%	138	7.3%	136	6.3%	154	6.1%
White	581	43.0%	641	41.8%	677	40.8%	792	41.8%	929	42.9%	1,046	41.4%
Unknown	N/A		N/A		N/A		N/A		N/A		7	0.3%
MINORITY	148	11.0%	198	12.9%	214	12.9%	265	14.0%	290	13.4%	341	13.5%

Minority Percentage of Professionals

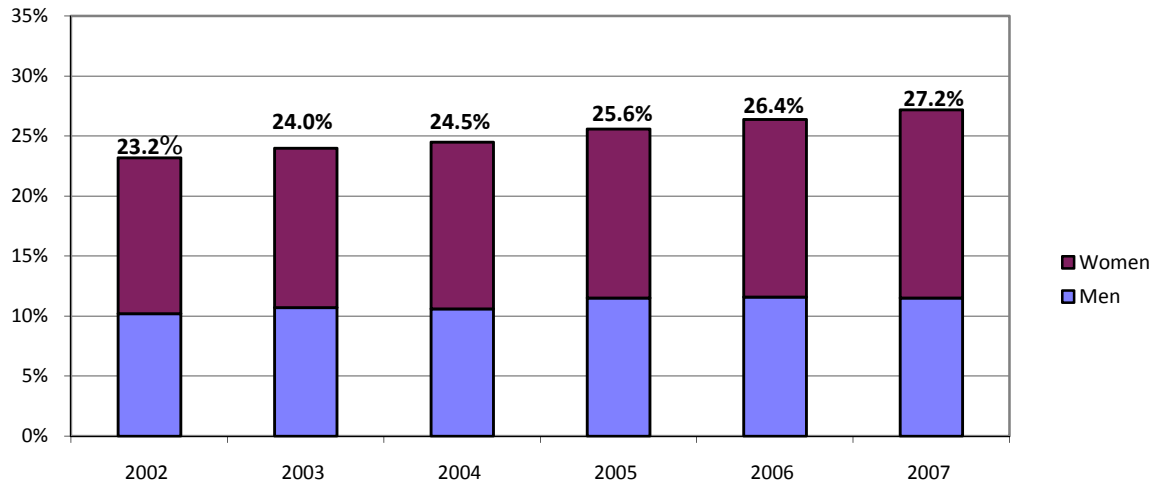


Classified Staff ASU Total University

(Other Staff include office support, skilled crafts, and service/maintenance staff.)

	Fall 2002		Fall 2003		Fall 2004		Fall 2005		Fall 2006		Fall 2007	
	Number	Percent	Number	Percent	Number	Percent	Number	Percent	Number	Percent	Number	Percent
TOTAL	4,725	100.0%	4,826	100.0%	4,792	100.0%	4,764	100.0%	4,580	100.0%	4,281	100.0%
African American	175	3.7%	191	4.0%	193	4.0%	210	4.4%	204	4.5%	191	4.5%
American Indian	109	2.3%	111	2.3%	119	2.5%	130	2.7%	126	2.8%	121	2.8%
Asian American	152	3.2%	177	3.7%	168	3.5%	178	3.7%	170	3.7%	161	3.8%
Hispanic	661	14.0%	678	14.0%	692	14.4%	702	14.7%	710	15.5%	690	16.1%
White	3,628	76.8%	3,669	76.0%	3,620	75.5%	3,544	74.4%	3,370	73.6%	3,106	72.6%
Unknown	N/A		N/A		N/A		N/A		N/A		12	0.3%
MINORITY	1,097	23.2%	1,157	24.0%	1,172	24.5%	1,220	25.6%	1,210	26.4%	1,163	27.2%
WOMEN AS A % OF TOTAL	Fall 2002		Fall 2003		Fall 2004		Fall 2005		Fall 2006		Fall 2007	
	Number	Percent	Number	Percent	Number	Percent	Number	Percent	Number	Percent	Number	Percent
% OF TOTAL	2,673	56.6%	2,723	56.4%	2,727	56.9%	2,668	56.0%	2,597	56.7%	2,432	56.8%
African American	96	2.0%	106	2.2%	113	2.4%	115	2.4%	114	2.5%	112	2.6%
American Indian	60	1.3%	59	1.2%	64	1.3%	70	1.5%	69	1.5%	60	1.4%
Asian American	93	2.0%	100	2.1%	100	2.1%	104	2.2%	105	2.3%	108	2.5%
Hispanic	363	7.7%	376	7.8%	387	8.1%	381	8.0%	390	8.5%	393	9.2%
White	2,061	43.6%	2,082	43.1%	2,063	43.1%	1,998	41.9%	1,919	41.9%	1,751	40.9%
Unknown	N/A		N/A		N/A		N/A		N/A		8	0.2%
MINORITY	612	13.0%	641	13.3%	664	13.9%	670	14.1%	678	14.8%	673	15.7%

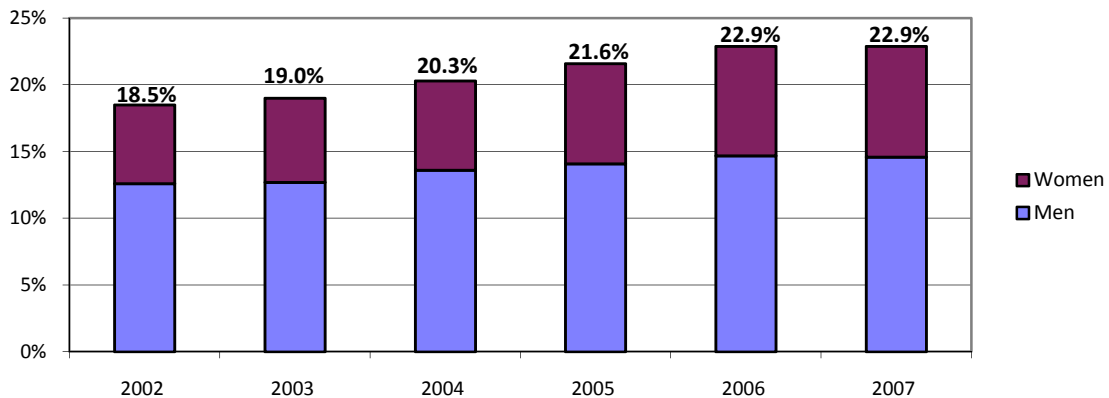
Minority Percentage of Classified Staff



Tenured/Tenure-Track Faculty ASU Total University

	Fall 2002		Fall 2003		Fall 2004		Fall 2005		Fall 2006		Fall 2007	
	Number	Percent	Number	Percent	Number	Percent	Number	Percent	Number	Percent	Number	Percent
TOTAL	1,671	100.0%	1,665	100.0%	1,678	100.0%	1,758	100.0%	1,808	100.0%	1,824	100.0%
African American	45	2.7%	47	2.8%	48	2.9%	49	2.8%	54	3.0%	50	2.7%
American Indian	16	1.0%	18	1.1%	26	1.5%	27	1.5%	27	1.5%	25	1.4%
Asian American	132	7.9%	133	8.0%	143	8.5%	166	9.4%	189	10.5%	198	10.9%
Hispanic	116	6.9%	118	7.1%	124	7.4%	137	7.8%	144	8.0%	143	7.8%
White	1,362	81.5%	1,349	81.0%	1,337	79.7%	1,379	78.4%	1,394	77.1%	1,403	76.9%
Unknown	N/A		N/A		N/A		N/A		N/A		5	0.3%
MINORITY	309	18.5%	316	19.0%	341	20.3%	379	21.6%	414	22.9%	416	22.8%
WOMEN AS A % OF TOTAL	Fall 2002		Fall 2003		Fall 2004		Fall 2005		Fall 2006		Fall 2007	
	Number	Percent	Number	Percent	Number	Percent	Number	Percent	Number	Percent	Number	Percent
% OF TOTAL	529	31.7%	533	32.0%	541	32.2%	588	33.4%	608	33.6%	625	34.3%
African American	18	1.1%	20	1.2%	23	1.4%	24	1.4%	27	1.5%	23	1.3%
American Indian	9	0.5%	9	0.5%	10	0.6%	11	0.6%	11	0.6%	9	0.5%
Asian American	27	1.6%	31	1.9%	36	2.1%	44	2.5%	52	2.9%	60	3.3%
Hispanic	44	2.6%	45	2.7%	43	2.6%	52	3.0%	58	3.2%	59	3.2%
White	431	25.8%	428	25.7%	429	25.6%	457	26.0%	460	25.4%	472	25.9%
Unknown	N/A		N/A		N/A		N/A		N/A		2	0.1%
MINORITY	98	5.9%	105	6.3%	112	6.7%	131	7.5%	148	8.2%	151	8.3%

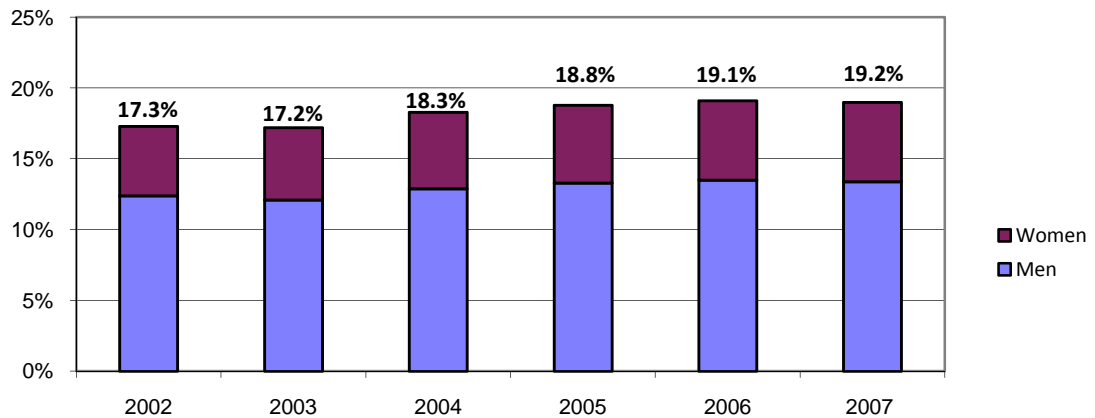
Minority Percentage of Tenured/Tenure-track Faculty



Tenured Faculty ASU Total University

	Fall 2002		Fall 2003		Fall 2004		Fall 2005		Fall 2006		Fall 2007	
	Number	Percent	Number	Percent	Number	Percent	Number	Percent	Number	Percent	Number	Percent
TOTAL	1,316	100.0%	1,300	100.0%	1,271	100.0%	1,279	100.0%	1,307	100.0%	1,307	100.0%
African American	32	2.4%	34	2.6%	33	2.6%	33	2.6%	36	2.8%	35	2.7%
American Indian	11	0.8%	11	0.8%	13	1.0%	13	1.0%	15	1.1%	16	1.2%
Asian American	95	7.2%	94	7.2%	96	7.6%	102	8.0%	106	8.1%	107	8.2%
Hispanic	90	6.8%	85	6.5%	90	7.1%	92	7.2%	93	7.1%	93	7.1%
White	1,088	82.7%	1,076	82.8%	1,039	81.7%	1,039	81.2%	1,057	80.9%	1,055	80.7%
Unknown	N/A		N/A		N/A		N/A		N/A		1	0.1%
MINORITY	228	17.3%	224	17.2%	232	18.3%	240	18.8%	250	19.1%	251	19.2%
WOMEN AS A % OF TOTAL	Fall 2002		Fall 2003		Fall 2004		Fall 2005		Fall 2006		Fall 2007	
	Number	Percent	Number	Percent	Number	Percent	Number	Percent	Number	Percent	Number	Percent
	359	27.3%	360	27.7%	357	28.1%	368	28.8%	382	29.2%	388	29.7%
African American	13	1.0%	14	1.1%	13	1.0%	13	1.0%	14	1.1%	13	1.0%
American Indian	4	0.3%	4	0.3%	4	0.3%	4	0.3%	5	0.4%	4	0.3%
Asian American	15	1.1%	18	1.4%	20	1.6%	21	1.6%	20	1.5%	22	1.7%
Hispanic	32	2.4%	30	2.3%	31	2.4%	32	2.5%	34	2.6%	34	2.6%
White	295	22.4%	294	22.6%	289	22.7%	298	23.3%	309	23.6%	314	24.0%
Unknown	N/A		N/A		N/A		N/A		N/A		1	0.1%
MINORITY	64	4.9%	66	5.1%	68	5.4%	70	5.5%	73	5.6%	73	5.6%

Minority Percentage of Tenured Faculty



Fall 2007 Faculty Rank ASU Total University

	Professor		Associate		Assistant		Other		Total	
	Number	Percent	Number	Percent	Number	Percent	Number	Percent	Number	Percent
TOTAL	925	100.0%	616	100.0%	605	100.0%	824	100.0%	2,970	100.0%
African American	21	2.3%	19	3.1%	21	3.5%	15	1.8%	76	2.6%
American Indian	13	1.4%	4	0.6%	9	1.5%	8	1.0%	34	1.1%
Asian American	64	6.9%	68	11.0%	104	17.2%	55	6.7%	291	9.8%
Hispanic	58	6.3%	49	8.0%	54	8.9%	49	5.9%	210	7.1%
White	768	83.0%	476	77.3%	408	67.4%	692	84.0%	2,344	78.9%
Unknown	1	0.1%	0	0.0%	9	1.5%	5	0.6%	15	0.5%
MINORITY	156	16.9%	140	22.7%	188	31.1%	127	15.4%	611	20.6%
WOMEN AS A % OF TOTAL	Professor		Associate		Assistant		Other		Total	
	Number	Percent	Number	Percent	Number	Percent	Number	Percent	Number	Percent
% OF TOTAL	216	23.4%	266	43.2%	282	46.6%	475	57.6%	1,239	41.7%
African American	9	1.0%	8	1.3%	15	2.5%	12	1.5%	44	1.5%
American Indian	2	0.2%	2	0.3%	5	0.8%	6	0.7%	15	0.5%
Asian American	10	1.1%	20	3.2%	39	6.4%	31	3.8%	100	3.4%
Hispanic	16	1.7%	23	3.7%	29	4.8%	27	3.3%	95	3.2%
White	178	19.2%	213	34.6%	191	31.6%	398	48.3%	980	33.0%
Unknown	1	0.1%	0	0.0%	3	0.5%	1	0.1%	5	0.2%
MINORITY	37	4.0%	53	8.6%	88	14.5%	76	9.2%	254	8.6%

