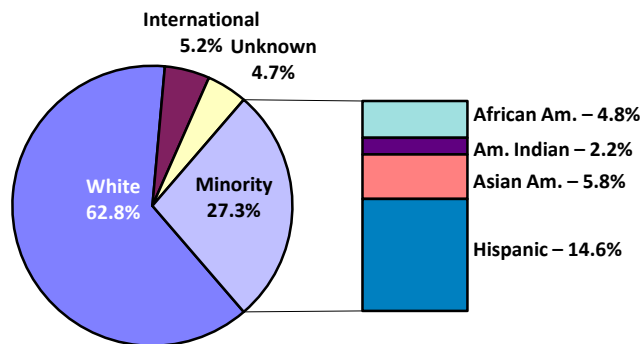


Total Enrollment ASU Total University

	Fall 1999		Fall 2001		Fall 2003		Fall 2005		Fall 2007		Fall 2009	
	Number	Percent	Number	Percent	Number	Percent	Number	Percent	Number	Percent	Number	Percent
TOTAL	49,700	100.0%	52,759	100.0%	57,543	100.0%	61,033	100.0%	64,394	100.0%	68,064	100.0%
African American	1,445	2.9%	1,597	3.0%	2,005	3.5%	2,211	3.6%	2,489	3.9%	3,257	4.8%
American Indian	977	2.0%	1,086	2.1%	1,276	2.2%	1,453	2.4%	1,370	2.1%	1,484	2.2%
Asian American	2,164	4.4%	2,426	4.6%	2,757	4.8%	2,944	4.8%	3,259	5.1%	3,935	5.8%
Hispanic	5,008	10.1%	5,480	10.4%	6,649	11.6%	7,325	12.0%	8,323	12.9%	9,924	14.6%
White	35,203	70.8%	36,697	69.6%	39,109	68.0%	39,537	64.8%	40,709	63.2%	42,728	62.8%
International	2,959	6.0%	3,611	6.8%	3,292	5.7%	3,055	5.0%	3,481	5.4%	3,549	5.2%
Unknown	1,944	3.9%	1,862	3.5%	2,455	4.3%	4,508	7.4%	4,763	7.4%	3,187	4.7%
MINORITY	9,594	19.3%	10,589	20.1%	12,687	22.0%	13,933	22.8%	15,441	24.0%	18,600	27.3%

WOMEN AS A % OF TOTAL	Fall 1999		Fall 2001		Fall 2003		Fall 2005		Fall 2007		Fall 2009	
	Number	Percent	Number	Percent	Number	Percent	Number	Percent	Number	Percent	Number	Percent
WOMEN AS A % OF TOTAL	26,530	53.4%	28,136	53.3%	30,666	53.3%	32,298	52.9%	33,538	52.1%	35,059	51.5%
African American	816	1.6%	918	1.7%	1,183	2.1%	1,269	2.1%	1,347	2.1%	1,777	2.6%
American Indian	641	1.3%	722	1.4%	828	1.4%	956	1.6%	860	1.3%	927	1.4%
Asian American	1,078	2.2%	1,244	2.4%	1,413	2.5%	1,519	2.5%	1,677	2.6%	2,000	2.9%
Hispanic	2,901	5.8%	3,213	6.1%	3,938	6.8%	4,299	7.0%	4,794	7.4%	5,611	8.2%
White	19,011	38.3%	19,897	37.7%	20,881	36.3%	20,818	34.1%	21,153	32.8%	21,931	32.2%
International	1,071	2.2%	1,213	2.3%	1,161	2.0%	1,134	1.9%	1,240	1.9%	1,233	1.8%
Unknown	1,012	2.0%	929	1.8%	1,262	2.2%	2,303	3.8%	2,467	3.8%	1,580	2.3%
MINORITY	5,436	10.9%	6,097	11.6%	7,362	12.8%	8,043	13.2%	8,678	13.5%	10,315	15.2%

Fall 2009 Total Enrollment

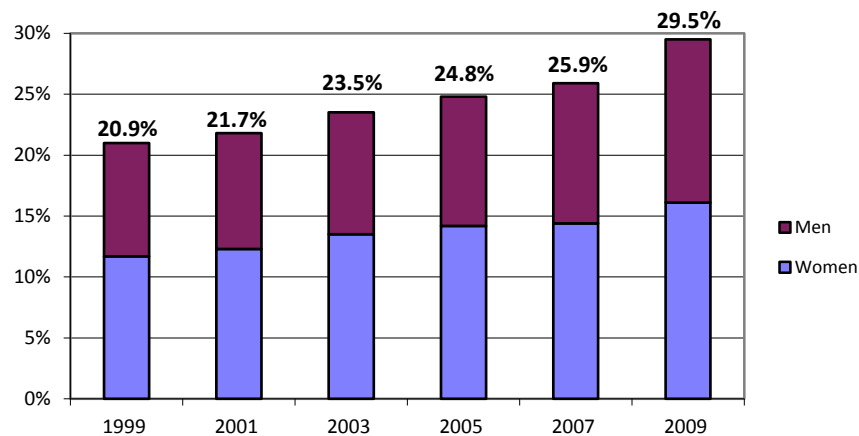


Undergraduate Enrollment ASU Total University

	Fall 1999		Fall 2001		Fall 2003		Fall 2005		Fall 2007		Fall 2009	
	Number	Percent	Number	Percent	Number	Percent	Number	Percent	Number	Percent	Number	Percent
TOTAL	37,988	100.0%	40,281	100.0%	45,430	100.0%	48,955	100.0%	51,311	100.0%	54,277	100.0%
African American	1,188	3.1%	1,303	3.2%	1,661	3.7%	1,893	3.9%	2,105	4.1%	2,767	5.1%
American Indian	818	2.2%	886	2.2%	1,038	2.3%	1,271	2.6%	1,137	2.2%	1,211	2.2%
Asian American	1,757	4.6%	2,005	5.0%	2,270	5.0%	2,516	5.1%	2,749	5.4%	3,295	6.1%
Hispanic	4,172	11.0%	4,567	11.3%	5,723	12.6%	6,464	13.2%	7,311	14.2%	8,734	16.1%
White	27,270	71.8%	28,703	71.3%	31,852	70.1%	33,536	68.5%	34,209	66.7%	34,589	63.7%
International	1,291	3.4%	1,365	3.4%	1,265	2.8%	1,162	2.4%	1,198	2.3%	1,328	2.4%
Unknown	1,492	3.9%	1,452	3.6%	1,621	3.6%	2,113	4.3%	2,602	5.1%	2,353	4.3%
MINORITY	7,935	20.9%	8,761	21.7%	10,692	23.5%	12,144	24.8%	13,302	25.9%	16,007	29.5%

WOMEN AS A % OF TOTAL	Fall 1999		Fall 2001		Fall 2003		Fall 2005		Fall 2007		Fall 2009	
	Number	Percent	Number	Percent	Number	Percent	Number	Percent	Number	Percent	Number	Percent
	20,351	53.6%	21,524	53.4%	24,188	53.2%	25,948	53.0%	26,692	52.0%	27,806	51.2%
African American	652	1.7%	731	1.8%	958	2.1%	1,066	2.2%	1,117	2.2%	1,482	2.7%
American Indian	534	1.4%	582	1.4%	666	1.5%	836	1.7%	706	1.4%	743	1.4%
Asian American	875	2.3%	1,017	2.5%	1,144	2.5%	1,285	2.6%	1,388	2.7%	1,616	3.0%
Hispanic	2,396	6.3%	2,633	6.5%	3,344	7.4%	3,762	7.7%	4,154	8.1%	4,890	9.0%
White	14,622	38.5%	15,335	38.1%	16,779	36.9%	17,517	35.8%	17,601	34.3%	17,462	32.2%
International	496	1.3%	490	1.2%	488	1.1%	456	0.9%	442	0.9%	442	0.8%
Unknown	776	2.0%	736	1.8%	809	1.8%	1,026	2.1%	1,284	2.5%	1,171	2.2%
MINORITY	4,457	11.7%	4,963	12.3%	6,112	13.5%	6,949	14.2%	7,365	14.4%	8,731	16.1%

Minority Percentage of Undergraduate Enrollment

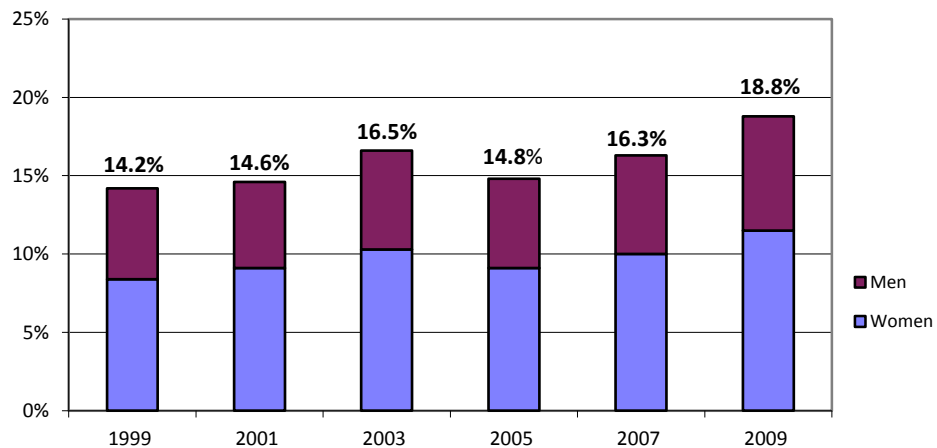


Graduate Enrollment ASU Total University

	Fall 1999		Fall 2001		Fall 2003		Fall 2005		Fall 2007		Fall 2009	
	Number	Percent	Number	Percent	Number	Percent	Number	Percent	Number	Percent	Number	Percent
TOTAL	11,712	100.0%	12,478	100.0%	12,113	100.0%	12,078	100.0%	13,083	100.0%	13,787	100.0%
African American	257	2.2%	294	2.4%	344	2.8%	318	2.6%	384	2.9%	490	3.6%
American Indian	159	1.4%	200	1.6%	238	2.0%	182	1.5%	233	1.8%	273	2.0%
Asian American	407	3.5%	421	3.4%	487	4.0%	428	3.5%	510	3.9%	640	4.6%
Hispanic	836	7.1%	913	7.3%	926	7.6%	861	7.1%	1,012	7.7%	1,190	8.6%
White	7,933	67.7%	7,994	64.1%	7,257	59.9%	6,001	49.7%	6,500	49.7%	8,139	59.0%
International	1,668	14.2%	2,246	18.0%	2,027	16.7%	1,893	15.7%	2,283	17.5%	2,221	16.1%
Unknown	452	3.9%	410	3.3%	834	6.9%	2,395	19.8%	2,161	16.5%	834	6.0%
MINORITY	1,659	14.2%	1,828	14.6%	1,995	16.5%	1,789	14.8%	2,139	16.3%	2,593	18.8%

WOMEN AS A % OF TOTAL	Fall 1999		Fall 2001		Fall 2003		Fall 2005		Fall 2007		Fall 2009	
	Number	Percent	Number	Percent	Number	Percent	Number	Percent	Number	Percent	Number	Percent
	6,179	52.8%	6,612	53.0%	6,478	53.5%	6,350	52.6%	6,846	52.3%	7,253	52.6%
African American	164	1.4%	187	1.5%	225	1.9%	203	1.7%	230	1.8%	295	2.1%
American Indian	107	0.9%	140	1.1%	162	1.3%	120	1.0%	154	1.2%	184	1.3%
Asian American	203	1.7%	227	1.8%	269	2.2%	234	1.9%	289	2.2%	384	2.8%
Hispanic	505	4.3%	580	4.6%	594	4.9%	537	4.4%	640	4.9%	721	5.2%
White	4,389	37.5%	4,562	36.6%	4,102	33.9%	3,301	27.3%	3,552	27.1%	4,469	32.4%
International	575	4.9%	723	5.8%	673	5.6%	678	5.6%	798	6.1%	791	5.7%
Unknown	236	2.0%	193	1.5%	453	3.7%	1,277	10.6%	1,183	9.0%	409	3.0%
MINORITY	979	8.4%	1,134	9.1%	1,250	10.3%	1,094	9.1%	1,313	10.0%	1,584	11.5%

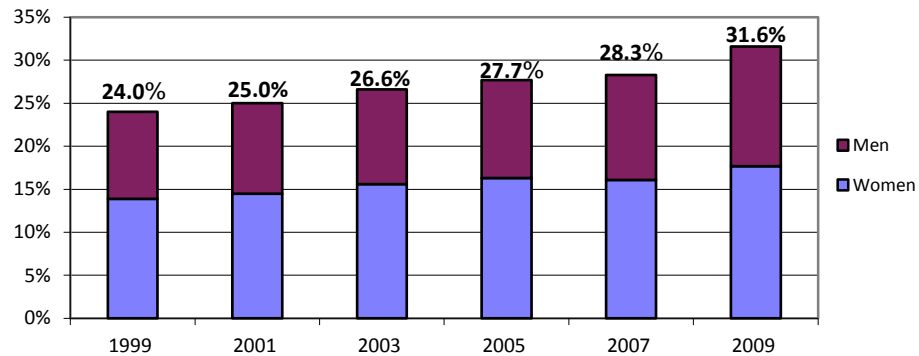
Minority Percentage of Graduate Enrollment



Resident Undergraduate Enrollment ASU Total University

	Fall 1999		Fall 2001		Fall 2003		Fall 2005		Fall 2007		Fall 2009	
	Number	Percent	Number	Percent	Number	Percent	Number	Percent	Number	Percent	Number	Percent
TOTAL	28,887	100.0%	30,619	100.0%	34,854	100.0%	37,364	100.0%	38,446	100.0%	42,170	100.0%
African American	956	3.3%	1,040	3.4%	1,309	3.8%	1,429	3.8%	1,502	3.9%	2,020	4.8%
American Indian	757	2.6%	832	2.7%	968	2.8%	1,195	3.2%	1,052	2.7%	1,121	2.7%
Asian American	1,496	5.2%	1,686	5.5%	1,900	5.5%	2,043	5.5%	2,229	5.8%	2,741	6.5%
Hispanic	3,735	12.9%	4,097	13.4%	5,111	14.7%	5,697	15.2%	6,106	15.9%	7,436	17.6%
White	20,745	71.8%	21,710	70.9%	24,215	69.5%	25,233	67.5%	25,495	66.3%	26,896	63.8%
International	144	0.5%	153	0.5%	95	0.3%	97	0.3%	94	0.2%	67	0.2%
Unknown	1,054	3.6%	1,101	3.6%	1,256	3.6%	1,670	4.5%	1,968	5.1%	1,889	4.5%
MINORITY	6,944	24.0%	7,655	25.0%	9,288	26.6%	10,364	27.7%	10,889	28.3%	13,318	31.6%
WOMEN AS A % OF TOTAL	Fall 1999		Fall 2001		Fall 2003		Fall 2005		Fall 2007		Fall 2009	
	Number	Percent	Number	Percent	Number	Percent	Number	Percent	Number	Percent	Number	Percent
	15,905	55.1%	16,877	55.1%	19,054	54.7%	20,407	54.6%	20,685	53.8%	22,338	53.0%
African American	550	1.9%	613	2.0%	785	2.3%	842	2.3%	846	2.2%	1,163	2.8%
American Indian	499	1.7%	548	1.8%	626	1.8%	790	2.1%	655	1.7%	696	1.7%
Asian American	749	2.6%	867	2.8%	983	2.8%	1,081	2.9%	1,150	3.0%	1,371	3.3%
Hispanic	2,185	7.6%	2,405	7.9%	3,046	8.7%	3,382	9.1%	3,522	9.2%	4,228	10.0%
White	11,297	39.1%	11,791	38.5%	12,921	37.1%	13,417	35.9%	13,463	35.0%	13,872	32.9%
International	77	0.3%	91	0.3%	57	0.2%	52	0.1%	51	0.1%	37	0.1%
Unknown	548	1.9%	562	1.8%	636	1.8%	843	2.3%	998	2.6%	971	2.3%
MINORITY	3,983	13.8%	4,433	14.5%	5,440	15.6%	6,095	16.3%	6,173	16.1%	7,458	17.7%

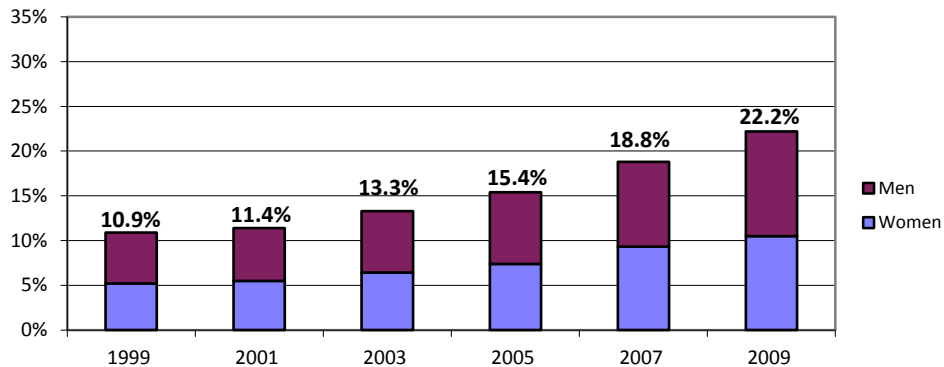
Minority Percentage of Resident Undergraduate Enrollment



Nonresident Undergraduate Enrollment ASU Total University

	Fall 1999		Fall 2001		Fall 2003		Fall 2005		Fall 2007		Fall 2009	
	Number	Percent	Number	Percent	Number	Percent	Number	Percent	Number	Percent	Number	Percent
TOTAL	9,101	100.0%	9,662	100.0%	10,576	100.0%	11,591	100.0%	12,865	100.0%	12,107	100.0%
African American	232	2.5%	263	2.7%	352	3.3%	464	4.0%	603	4.7%	747	6.2%
American Indian	61	0.7%	54	0.6%	70	0.7%	76	0.7%	85	0.7%	90	0.7%
Asian American	261	2.9%	319	3.3%	370	3.5%	473	4.1%	520	4.0%	554	4.6%
Hispanic	437	4.8%	470	4.9%	612	5.8%	767	6.6%	1,205	9.4%	1,298	10.7%
White	6,525	71.7%	6,993	72.4%	7,637	72.2%	8,303	71.6%	8,714	67.7%	7,693	63.5%
International	1,147	12.6%	1,212	12.5%	1,170	11.1%	1,065	9.2%	1,104	8.6%	1,261	10.4%
Unknown	438	4.8%	351	3.6%	365	3.5%	443	3.8%	634	4.9%	464	3.8%
MINORITY	991	10.9%	1,106	11.4%	1,404	13.3%	1,780	15.4%	2,413	18.8%	2,689	22.2%
WOMEN AS A % OF TOTAL	Fall 1999		Fall 2001		Fall 2003		Fall 2005		Fall 2007		Fall 2009	
	Number	Percent	Number	Percent	Number	Percent	Number	Percent	Number	Percent	Number	Percent
WOMEN AS A % OF TOTAL	4,446	48.9%	4,647	48.1%	5,134	48.5%	5,541	47.8%	6,007	46.7%	5,468	45.2%
African American	102	1.1%	118	1.2%	173	1.6%	224	1.9%	271	2.1%	319	2.6%
American Indian	35	0.4%	34	0.4%	40	0.4%	46	0.4%	51	0.4%	47	0.4%
Asian American	126	1.4%	150	1.6%	161	1.5%	204	1.8%	238	1.8%	245	2.0%
Hispanic	211	2.3%	228	2.4%	298	2.8%	380	3.3%	632	4.9%	662	5.5%
White	3,325	36.5%	3,544	36.7%	3,858	36.5%	4,100	35.4%	4,138	32.2%	3,590	29.7%
International	419	4.6%	399	4.1%	431	4.1%	404	3.5%	391	3.0%	405	3.3%
Unknown	228	2.5%	174	1.8%	173	1.6%	183	1.6%	286	2.2%	200	1.7%
MINORITY	474	5.2%	530	5.5%	672	6.4%	854	7.4%	1,192	9.3%	1,273	10.5%

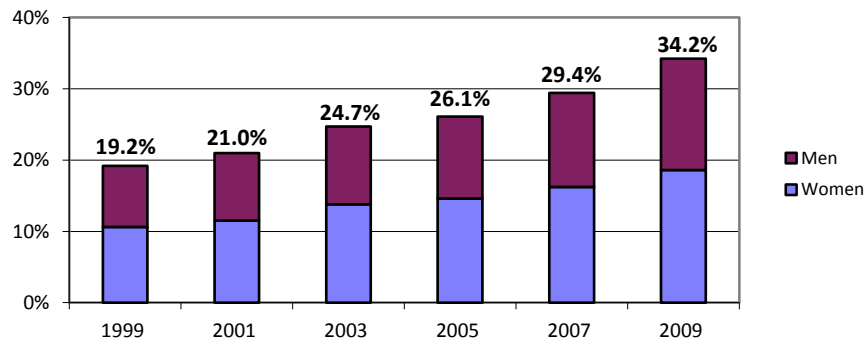
Minority Percentage of Nonresident Undergraduate Enrollment



New First-Time Freshmen ASU Total University

	Fall 1999		Fall 2001		Fall 2003		Fall 2005		Fall 2007		Fall 2009	
	Number	Percent	Number	Percent	Number	Percent	Number	Percent	Number	Percent	Number	Percent
TOTAL	5,968	100.0%	6,586	100.0%	7,647	100.0%	8,467	100.0%	9,274	100.0%	9,344	100.0%
African American	170	2.8%	211	3.2%	310	4.1%	363	4.3%	432	4.7%	590	6.3%
American Indian	115	1.9%	137	2.1%	156	2.0%	211	2.5%	198	2.1%	176	1.9%
Asian American	279	4.7%	354	5.4%	419	5.5%	480	5.7%	569	6.1%	640	6.8%
Hispanic	584	9.8%	679	10.3%	1,007	13.2%	1,155	13.6%	1,525	16.4%	1,787	19.1%
White	4,101	68.7%	4,829	73.3%	5,363	70.1%	5,720	67.6%	6,049	65.2%	5,682	60.8%
International	120	2.0%	149	2.3%	131	1.7%	118	1.4%	172	1.9%	201	2.2%
Unknown	599	10.0%	227	3.4%	261	3.4%	420	5.0%	329	3.5%	268	2.9%
MINORITY	1,148	19.2%	1,381	21.0%	1,892	24.7%	2,209	26.1%	2,724	29.4%	3,193	34.2%
WOMEN AS A % OF TOTAL	Fall 1999		Fall 2001		Fall 2003		Fall 2005		Fall 2007		Fall 2009	
	Number	Percent	Number	Percent	Number	Percent	Number	Percent	Number	Percent	Number	Percent
WOMEN AS A % OF TOTAL	3,250	54.5%	3,486	52.9%	4,082	53.4%	4,472	52.8%	4,863	52.4%	4,823	51.6%
African American	93	1.6%	107	1.6%	192	2.5%	215	2.5%	229	2.5%	320	3.4%
American Indian	68	1.1%	89	1.4%	97	1.3%	131	1.5%	117	1.3%	105	1.1%
Asian American	129	2.2%	181	2.7%	206	2.7%	229	2.7%	275	3.0%	293	3.1%
Hispanic	341	5.7%	379	5.8%	562	7.3%	660	7.8%	878	9.5%	1,020	10.9%
White	2,252	37.7%	2,565	38.9%	2,847	37.2%	2,999	35.4%	3,126	33.7%	2,895	31.0%
International	39	0.7%	47	0.7%	48	0.6%	39	0.5%	54	0.6%	64	0.7%
Unknown	328	5.5%	118	1.8%	130	1.7%	199	2.4%	184	2.0%	126	1.3%
MINORITY	631	10.6%	756	11.5%	1,057	13.8%	1,235	14.6%	1,499	16.2%	1,738	18.6%

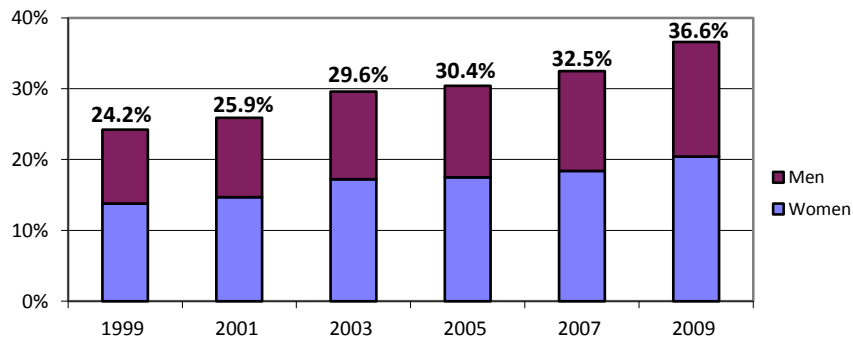
Minority Percentage of New First-Time Freshmen



New Resident First-Time Freshmen ASU Total University

	Fall 1999		Fall 2001		Fall 2003		Fall 2005		Fall 2007		Fall 2009	
	Number	Percent	Number	Percent	Number	Percent	Number	Percent	Number	Percent	Number	Percent
TOTAL	3,842	100.0%	4,163	100.0%	4,831	100.0%	5,466	100.0%	6,031	100.0%	6,497	100.0%
African American	114	3.0%	142	3.4%	197	4.1%	207	3.8%	248	4.1%	330	5.1%
American Indian	104	2.7%	113	2.7%	137	2.8%	187	3.4%	167	2.8%	159	2.4%
Asian American	224	5.8%	269	6.5%	316	6.5%	344	6.3%	431	7.1%	494	7.6%
Hispanic	486	12.6%	556	13.4%	782	16.2%	923	16.9%	1,114	18.5%	1,394	21.5%
White	2,554	66.5%	2,921	70.2%	3,232	66.9%	3,498	64.0%	3,851	63.9%	3,925	60.4%
International	23	0.6%	13	0.3%	15	0.3%	15	0.3%	17	0.3%	13	0.2%
Unknown	337	8.8%	149	3.6%	152	3.1%	292	5.3%	203	3.4%	182	2.8%
MINORITY	928	24.2%	1,080	25.9%	1,432	29.6%	1,661	30.4%	1,960	32.5%	2,377	36.6%
WOMEN AS A % OF TOTAL	Fall 1999		Fall 2001		Fall 2003		Fall 2005		Fall 2007		Fall 2009	
	Number	Percent	Number	Percent	Number	Percent	Number	Percent	Number	Percent	Number	Percent
WOMEN AS A % OF TOTAL	2,180	56.7%	2,248	54.0%	2,627	54.4%	2,995	54.8%	3,279	54.4%	3,467	53.4%
African American	71	1.8%	77	1.8%	136	2.8%	128	2.3%	146	2.4%	197	3.0%
American Indian	60	1.6%	75	1.8%	84	1.7%	114	2.1%	97	1.6%	95	1.5%
Asian American	102	2.7%	143	3.4%	159	3.3%	172	3.1%	212	3.5%	230	3.5%
Hispanic	297	7.7%	316	7.6%	453	9.4%	544	10.0%	654	10.8%	806	12.4%
White	1,452	37.8%	1,550	37.2%	1,714	35.5%	1,884	34.5%	2,043	33.9%	2,046	31.5%
International	9	0.2%	9	0.2%	8	0.2%	5	0.1%	9	0.1%	8	0.1%
Unknown	189	4.9%	78	1.9%	73	1.5%	148	2.7%	118	2.0%	85	1.3%
MINORITY	530	13.8%	611	14.7%	832	17.2%	958	17.5%	1,109	18.4%	1,328	20.4%

Minority Percentage of New Resident First-Time Freshmen

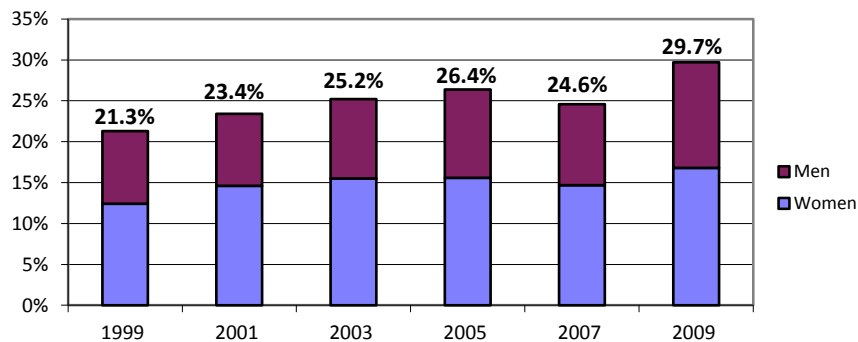


New Transfers

ASU Total University

	Fall 1999		Fall 2001		Fall 2003		Fall 2005		Fall 2007		Fall 2009	
	Number	Percent	Number	Percent	Number	Percent	Number	Percent	Number	Percent	Number	Percent
TOTAL	4,743	100.0%	4,895	100.0%	5,506	100.0%	5,395	100.0%	4,910	100.0%	5,388	100.0%
African American	157	3.3%	166	3.4%	246	4.5%	245	4.5%	186	3.8%	339	6.3%
American Indian	120	2.5%	164	3.4%	169	3.1%	179	3.3%	127	2.6%	142	2.6%
Asian American	163	3.4%	186	3.8%	199	3.6%	221	4.1%	170	3.5%	262	4.9%
Hispanic	568	12.0%	629	12.8%	772	14.0%	778	14.4%	723	14.7%	859	15.9%
White	3,305	69.7%	3,382	69.1%	3,706	67.3%	3,569	66.2%	2,773	56.5%	3,328	61.8%
International	171	3.6%	196	4.0%	173	3.1%	137	2.5%	95	1.9%	153	2.8%
Unknown	259	5.5%	172	3.5%	241	4.4%	266	4.9%	836	17.0%	305	5.7%
MINORITY	1,008	21.3%	1,145	23.4%	1,386	25.2%	1,423	26.4%	1,206	24.6%	1,602	29.7%
WOMEN AS A % OF TOTAL	Fall 1999		Fall 2001		Fall 2003		Fall 2005		Fall 2007		Fall 2009	
	Number	Percent	Number	Percent	Number	Percent	Number	Percent	Number	Percent	Number	Percent
WOMEN AS A % OF TOTAL	2,646	55.8%	2,712	55.4%	3,045	55.3%	2,904	53.8%	2,635	53.7%	2,735	50.8%
African American	94	2.0%	107	2.2%	135	2.5%	121	2.2%	110	2.2%	194	3.6%
American Indian	82	1.7%	106	2.2%	121	2.2%	120	2.2%	88	1.8%	89	1.7%
Asian American	76	1.6%	104	2.1%	119	2.2%	121	2.2%	102	2.1%	133	2.5%
Hispanic	334	7.0%	391	8.0%	481	8.7%	477	8.8%	421	8.6%	487	9.0%
White	1,855	39.1%	1,848	37.8%	1,981	36.0%	1,878	34.8%	1,472	30.0%	1,642	30.5%
International	72	1.5%	85	1.7%	82	1.5%	60	1.1%	42	0.9%	48	0.9%
Unknown	133	2.8%	71	1.5%	126	2.3%	127	2.4%	400	8.1%	142	2.6%
MINORITY	586	12.4%	708	14.5%	856	15.5%	839	15.6%	721	14.7%	903	16.8%

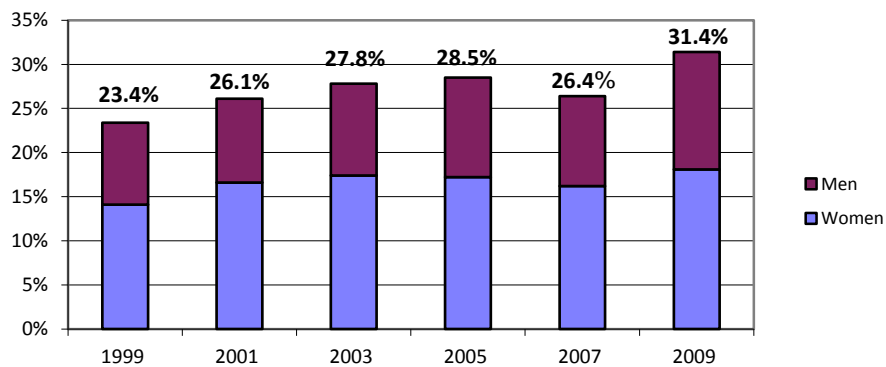
Minority Percentage of New Transfer Students



New Resident Transfers ASU Total University

	Fall 1999		Fall 2001		Fall 2003		Fall 2005		Fall 2007		Fall 2009	
	Number	Percent	Number	Percent	Number	Percent	Number	Percent	Number	Percent	Number	Percent
TOTAL	3,814	100.0%	3,941	100.0%	4,493	100.0%	4,252	100.0%	3,914	100.0%	4,401	100.0%
African American	133	3.5%	140	3.6%	203	4.5%	188	4.4%	141	3.6%	277	6.3%
American Indian	111	2.9%	158	4.0%	160	3.6%	168	4.0%	120	3.1%	132	3.0%
Asian American	134	3.5%	153	3.9%	166	3.7%	174	4.1%	133	3.4%	215	4.9%
Hispanic	516	13.5%	577	14.6%	719	16.0%	681	16.0%	641	16.4%	760	17.3%
White	2,692	70.6%	2,748	69.7%	3,039	67.6%	2,813	66.2%	2,217	56.6%	2,749	62.5%
International	25	0.7%	24	0.6%	10	0.2%	13	0.3%	7	0.2%	3	0.1%
Unknown	203	5.3%	141	3.6%	196	4.4%	215	5.1%	655	16.7%	265	6.0%
MINORITY	894	23.4%	1,028	26.1%	1,248	27.8%	1,211	28.5%	1,035	26.4%	1,384	31.4%
WOMEN AS A % OF TOTAL	Fall 1999		Fall 2001		Fall 2003		Fall 2005		Fall 2007		Fall 2009	
	Number	Percent	Number	Percent	Number	Percent	Number	Percent	Number	Percent	Number	Percent
WOMEN AS A % OF TOTAL	2,181	57.2%	2,246	57.0%	2,554	56.8%	2,381	56.0%	2,166	55.3%	2,309	52.5%
African American	84	2.2%	98	2.5%	109	2.4%	98	2.3%	86	2.2%	166	3.8%
American Indian	76	2.0%	100	2.5%	117	2.6%	115	2.7%	86	2.2%	85	1.9%
Asian American	64	1.7%	86	2.2%	101	2.2%	98	2.3%	82	2.1%	108	2.5%
Hispanic	313	8.2%	367	9.3%	456	10.1%	421	9.9%	380	9.7%	437	9.9%
White	1,524	40.0%	1,528	38.8%	1,654	36.8%	1,530	36.0%	1,212	31.0%	1,387	31.5%
International	16	0.4%	14	0.4%	8	0.2%	12	0.3%	3	0.1%	1	0.0%
Unknown	104	2.7%	53	1.3%	109	2.4%	107	2.5%	317	8.1%	125	2.8%
MINORITY	537	14.1%	651	16.5%	783	17.4%	732	17.2%	634	16.2%	796	18.1%

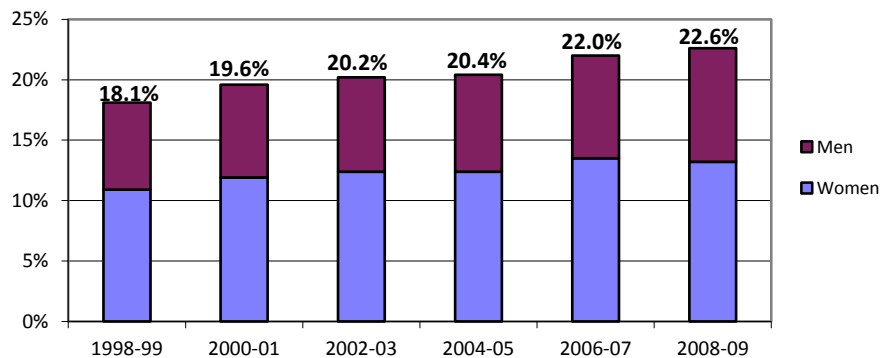
Minority Percentage of New Resident Transfers



Baccalaureate Degrees ASU Total University

	1998-99		2000-01		2002-03		2004-05		2006-07		2008-09	
	Number	Percent	Number	Percent	Number	Percent	Number	Percent	Number	Percent	Number	Percent
TOTAL	7,507	100.0%	7,742	100.0%	8,566	100.0%	9,729	100.0%	10,137	100.0%	11,229	100.0%
African American	153	2.0%	232	3.0%	245	2.9%	273	2.8%	307	3.0%	378	3.4%
American Indian	123	1.6%	134	1.7%	150	1.8%	164	1.7%	178	1.8%	187	1.7%
Asian American	330	4.4%	354	4.6%	396	4.6%	463	4.8%	503	5.0%	550	4.9%
Hispanic	752	10.0%	798	10.3%	943	11.0%	1,085	11.2%	1,244	12.3%	1,420	12.6%
White	5,691	75.8%	5,769	74.5%	6,283	73.3%	7,061	72.6%	7,281	71.8%	7,964	70.9%
International	265	3.5%	298	3.8%	297	3.5%	297	3.1%	235	2.3%	257	2.3%
Unknown	193	2.6%	157	2.0%	252	2.9%	386	4.0%	389	3.8%	473	4.2%
MINORITY	1,358	18.1%	1,518	19.6%	1,734	20.2%	1,985	20.4%	2,232	22.0%	2,535	22.6%
WOMEN AS A % OF TOTAL	1998-99		2000-01		2002-03		2004-05		2006-07		2008-09	
	Number	Percent	Number	Percent	Number	Percent	Number	Percent	Number	Percent	Number	Percent
	4,161	55.4%	4,411	57.0%	4,890	57.1%	5,520	56.7%	5,703	56.3%	6,154	54.8%
African American	93	1.2%	141	1.8%	146	1.7%	170	1.7%	192	1.9%	215	1.9%
American Indian	71	0.9%	87	1.1%	106	1.2%	119	1.2%	123	1.2%	135	1.2%
Asian American	199	2.7%	188	2.4%	223	2.6%	236	2.4%	273	2.7%	297	2.6%
Hispanic	455	6.1%	504	6.5%	586	6.8%	679	7.0%	780	7.7%	833	7.4%
White	3,129	41.7%	3,288	42.5%	3,575	41.7%	3,972	40.8%	4,033	39.8%	4,341	38.7%
International	119	1.6%	126	1.6%	110	1.3%	131	1.3%	97	1.0%	105	0.9%
Unknown	95	1.3%	77	1.0%	144	1.7%	213	2.2%	205	2.0%	228	2.0%
MINORITY	818	10.9%	920	11.9%	1,061	12.4%	1,204	12.4%	1,368	13.5%	1,480	13.2%

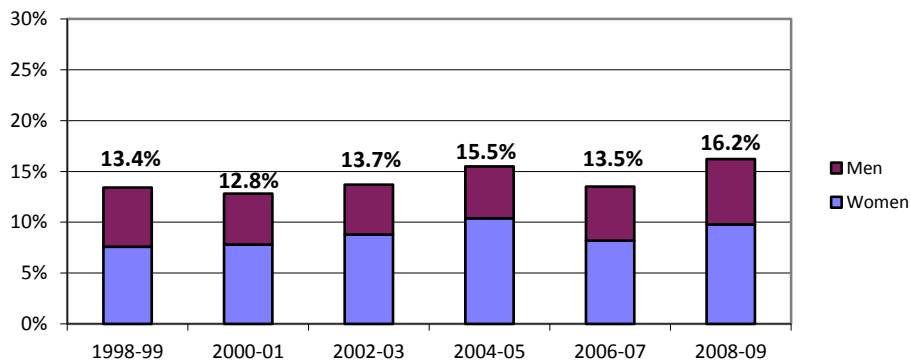
Minority Percentage of Baccalaureate Degrees Awarded



Graduate Degrees ASU Total University

	1998-99		2000-01		2002-03		2004-05		2006-07		2008-09	
	Number	Percent	Number	Percent	Number	Percent	Number	Percent	Number	Percent	Number	Percent
TOTAL	2,938	100.0%	2,870	100.0%	3,237	100.0%	3,092	100.0%	3,492	100.0%	4,381	100.0%
African American	82	2.8%	45	1.6%	65	2.0%	84	2.7%	80	2.3%	129	2.9%
American Indian	29	1.0%	37	1.3%	70	2.2%	72	2.3%	45	1.3%	64	1.5%
Asian American	99	3.4%	102	3.6%	114	3.5%	101	3.3%	116	3.3%	191	4.4%
Hispanic	185	6.3%	184	6.4%	195	6.0%	221	7.1%	230	6.6%	326	7.4%
White	1,931	65.7%	1,860	64.8%	2,061	63.7%	1,766	57.1%	1,673	47.9%	2,290	52.3%
International	512	17.4%	583	20.3%	642	19.8%	553	17.9%	599	17.2%	860	19.6%
Unknown	100	3.4%	59	2.1%	90	2.8%	295	9.5%	749	21.4%	521	11.9%
MINORITY	395	13.4%	368	12.8%	444	13.7%	478	15.5%	471	13.5%	710	16.2%
WOMEN AS A % OF TOTAL	1,490	50.7%	1,414	49.3%	1,631	50.4%	1,644	53.2%	1,797	51.5%	2,252	51.4%
African American	49	1.7%	33	1.1%	40	1.2%	56	1.8%	53	1.5%	82	1.9%
American Indian	17	0.6%	26	0.9%	55	1.7%	52	1.7%	30	0.9%	43	1.0%
Asian American	53	1.8%	53	1.8%	65	2.0%	62	2.0%	63	1.8%	106	2.4%
Hispanic	105	3.6%	113	3.9%	125	3.9%	152	4.9%	140	4.0%	200	4.6%
White	1,057	36.0%	971	33.8%	1,114	34.4%	978	31.6%	907	26.0%	1,254	28.6%
International	156	5.3%	183	6.4%	196	6.1%	183	5.9%	213	6.1%	282	6.4%
Unknown	53	1.8%	35	1.2%	36	1.1%	161	5.2%	391	11.2%	285	6.5%
MINORITY	224	7.6%	225	7.8%	285	8.8%	322	10.4%	286	8.2%	431	9.8%

Minority Percentage of Graduate Degrees Awarded

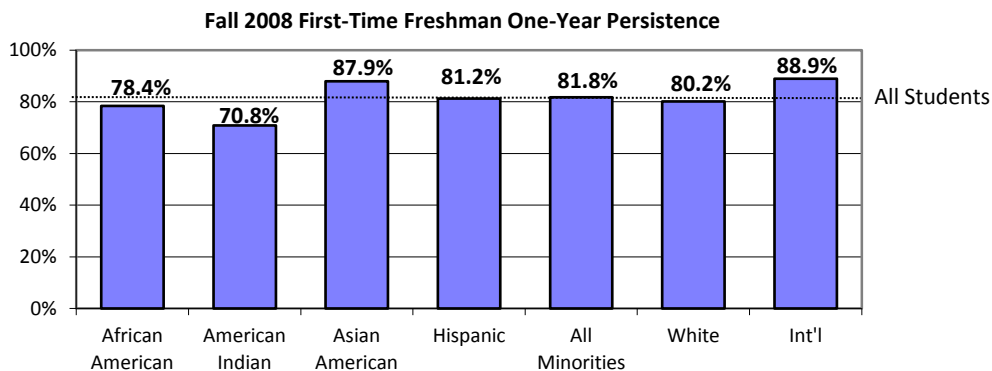


One-Year Persistence Rates for First-Time Full-Time Freshmen ASU Total University

First-time freshmen are new degree-seeking undergraduates who graduated from high school the previous year and new freshmen with fewer than 12 transfer credits.

	1998		2000		2002		2004		2006		2008	
	No. Entering	% Persisting	No. Entering	% Persisting	No. Entering	% Persisting	No. Entering	% Persisting	No. Entering	% Persisting	No. Entering	% Persisting
TOTAL	4,772	75.2%	5,754	76.3%	6,421	76.7%	7,293	79.0%	8,533	77.2%	8,317	81.2%
African American	143	76.9%	187	67.9%	204	70.6%	249	73.9%	394	67.8%	371	78.4%
American Indian	104	67.3%	111	57.7%	136	61.8%	144	64.6%	177	58.8%	137	70.8%
Asian American	244	81.1%	305	84.6%	336	85.4%	379	83.4%	517	84.7%	579	87.9%
Hispanic	530	72.6%	633	75.0%	764	74.2%	942	77.9%	1,259	73.1%	1,449	81.2%
White	3,484	75.2%	4,170	76.6%	4,559	77.0%	5,111	79.2%	5,722	78.5%	5,195	80.2%
International	139	81.3%	124	81.5%	101	83.2%	113	89.4%	142	86.6%	162	88.9%
Unknown	128	73.4%	224	76.8%	321	76.3%	355	79.7%	322	75.8%	424	86.3%
MINORITY	1,021	74.7%	1,236	74.8%	1,440	75.1%	1,714	77.4%	2,347	73.7%	2,536	81.8%

	1998		2000		2002		2004		2006		2008	
	No. Entering	% Persisting	No. Entering	% Persisting	No. Entering	% Persisting	No. Entering	% Persisting	No. Entering	% Persisting	No. Entering	% Persisting
WOMEN	2,572	76.8%	3,071	77.8%	3,561	77.2%	3,998	79.3%	4,556	77.2%	4,344	82.8%
African American	69	81.2%	106	73.6%	116	71.6%	159	76.7%	206	67.0%	199	79.9%
American Indian	68	72.1%	66	57.6%	76	57.9%	91	63.7%	113	54.9%	79	75.9%
Asian American	134	82.1%	153	85.0%	190	86.3%	194	85.1%	276	84.4%	287	89.2%
Hispanic	299	73.2%	357	75.6%	465	74.6%	552	79.2%	734	73.3%	797	81.1%
White	1,890	76.9%	2,235	78.2%	2,498	77.7%	2,789	79.6%	3,024	78.9%	2,702	82.5%
International	53	83.0%	43	83.7%	41	82.9%	38	84.2%	43	95.3%	52	90.4%
Unknown	59	74.6%	111	81.1%	175	77.7%	175	78.3%	160	75.0%	228	87.3%
MINORITY	570	76.1%	682	75.7%	847	75.3%	996	78.5%	1,329	73.1%	1,362	82.3%

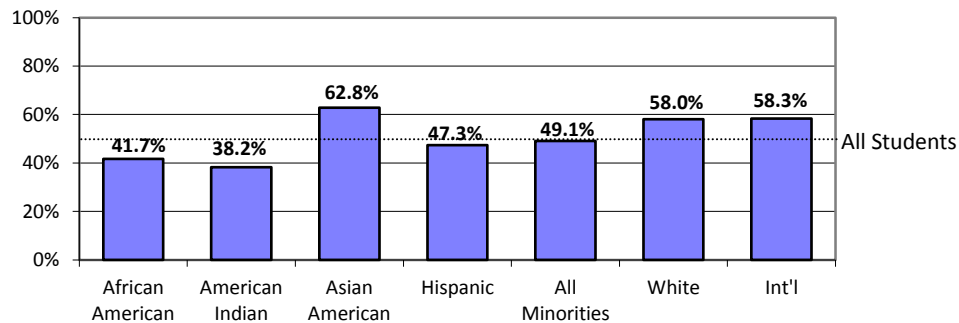


Six-Year Graduation Rates for First-Time Full-Time Freshmen ASU Total University

First-time freshmen are new degree-seeking undergraduates who graduated from high school the previous year and new freshmen with fewer than 12 transfer credits.

	1993		1995		1997		1999		2001		2003	
	No. Entering	% Graduating	No. Entering	% Graduating	No. Entering	% Graduating	No. Entering	% Graduating	No. Entering	% Graduating	No. Entering	% Graduating
TOTAL	3,298	47.2%	3,947	49.2%	4,961	51.9%	5,667	55.0%	6,198	55.6%	7,228	55.8%
African American	71	26.8%	111	36.9%	174	44.8%	154	42.9%	202	43.6%	295	41.7%
American Indian	74	27.0%	94	28.7%	124	26.6%	106	25.5%	126	26.2%	144	38.2%
Asian American	155	56.1%	198	56.6%	261	58.6%	267	62.2%	337	64.7%	401	62.8%
Hispanic	318	44.3%	457	44.2%	507	44.4%	565	48.3%	645	51.2%	935	47.3%
White	2,489	47.9%	2,894	50.0%	3,703	53.5%	3,879	56.7%	4,538	57.0%	5,072	58.0%
International	110	54.5%	95	62.1%	92	57.6%	115	64.3%	144	61.8%	139	58.3%
Unknown	81	44.4%	98	55.1%	100	52.0%	581	53.2%	206	49.5%	242	57.0%
MINORITY	618	43.2%	860	44.4%	1,066	45.9%	1,092	48.7%	1,310	51.1%	1,775	49.1%
	1993		1995		1997		1999		2001		2003	
WOMEN	No. Entering	% Graduating	No. Entering	% Graduating	No. Entering	% Graduating	No. Entering	% Graduating	No. Entering	% Graduating	No. Entering	% Graduating
TOTAL	1,637	52.5%	2,097	54.1%	2,652	56.4%	3,110	59.4%	3,347	59.7%	3,933	58.6%
African American	33	30.3%	62	40.3%	100	48.0%	86	50.0%	103	52.4%	181	43.1%
American Indian	47	29.8%	60	26.7%	88	31.8%	64	26.6%	84	31.0%	90	35.6%
Asian American	85	60.0%	109	59.6%	151	65.6%	125	69.6%	173	63.6%	200	65.5%
Hispanic	154	48.7%	256	49.6%	261	52.9%	334	53.3%	363	57.6%	533	49.9%
White	1,245	53.8%	1,528	55.4%	1,963	57.5%	2,148	60.8%	2,470	60.9%	2,753	61.4%
International	34	58.8%	35	71.4%	34	64.7%	38	68.4%	45	82.2%	51	62.7%
Unknown	39	51.3%	47	61.7%	55	56.4%	315	60.0%	109	53.2%	125	59.2%
MINORITY	319	47.0%	487	47.8%	600	52.2%	609	53.4%	723	55.2%	1,004	50.5%

Fall 2003 First-Time Freshmen Graduating in 6 Years



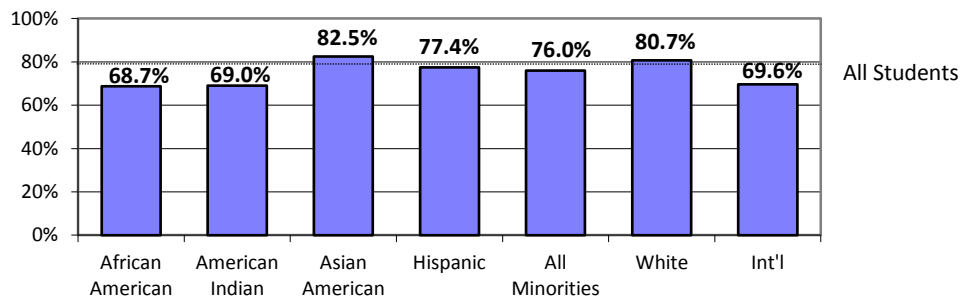
One-Year Persistence Rates for Full-Time Lower-Division Transfers ASU Total University

Lower-division transfers are new degree-seeking transfer students entering as freshmen or sophomores.

	1998		2000		2002		2004		2006		2008	
	No. Entering	% Persisting	No. Entering	% Persisting	No. Entering	% Persisting	No. Entering	% Persisting	No. Entering	% Persisting	No. Entering	% Persisting
TOTAL	1,429	74.8%	1,386	75.5%	1,579	75.2%	1,451	77.1%	1,434	75.1%	1,666	79.2%
African American	41	61.0%	44	75.0%	49	67.3%	61	77.0%	63	66.7%	83	68.7%
American Indian	28	60.7%	31	58.1%	47	72.3%	28	53.6%	38	57.9%	29	69.0%
Asian American	51	80.4%	52	80.8%	48	81.3%	46	76.1%	73	74.0%	80	82.5%
Hispanic	164	68.9%	135	72.6%	175	74.9%	152	67.1%	163	79.1%	212	77.4%
White	1,021	75.1%	979	76.2%	1,114	74.1%	1,019	78.5%	993	75.3%	1,117	80.7%
International	75	89.3%	78	78.2%	84	85.7%	53	84.9%	58	86.2%	92	69.6%
Unknown	49	79.6%	67	71.6%	62	83.9%	92	81.5%	46	69.6%	53	88.7%
MINORITY	284	69.0%	262	72.9%	319	74.3%	287	69.3%	337	73.3%	404	76.0%

	1998		2000		2002		2004		2006		2008	
	No. Entering	% Persisting	No. Entering	% Persisting	No. Entering	% Persisting	No. Entering	% Persisting	No. Entering	% Persisting	No. Entering	% Persisting
WOMEN	732	75.5%	707	77.2%	771	76.5%	723	77.0%	732	76.2%	804	82.8%
African American	16	62.5%	27	70.4%	24	70.8%	31	80.6%	28	57.1%	38	76.3%
American Indian	18	44.4%	23	56.5%	27	74.1%	18	50.0%	30	63.3%	15	66.7%
Asian American	29	79.3%	28	89.3%	24	79.2%	25	64.0%	42	69.0%	46	89.1%
Hispanic	89	68.5%	80	72.5%	94	75.5%	83	63.9%	80	81.3%	109	85.3%
White	533	76.9%	492	78.7%	531	75.5%	496	79.8%	504	77.4%	538	82.7%
International	25	96.0%	21	76.2%	40	90.0%	28	82.1%	19	89.5%	32	75.0%
Unknown	22	77.3%	36	77.8%	31	83.9%	42	83.3%	29	75.9%	26	92.3%
MINORITY	152	67.1%	158	72.8%	169	75.1%	157	65.6%	180	71.7%	208	83.2%

Fall 2008 Lower-Division Transfer One-Year Persistence



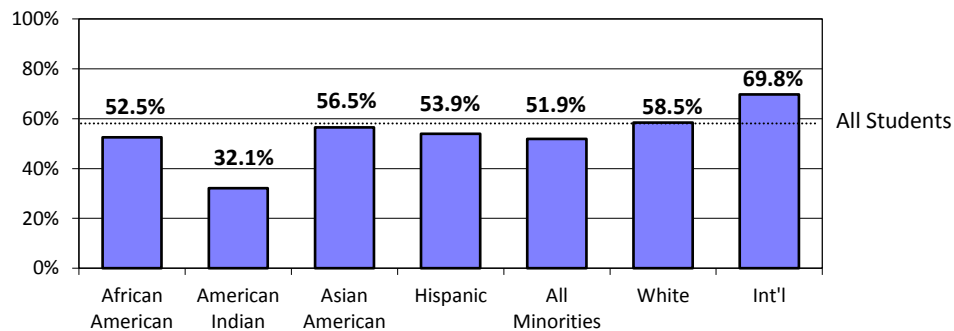
Five-Year Graduation Rates for Full-Time Lower-Division Transfers ASU Total University

Lower-division transfers are new degree-seeking transfer students entering as freshmen or sophomores.

	1994		1996		1998		2000		2002		2004	
	No. Entering	% Graduating	No. Entering	% Graduating	No. Entering	% Graduating	No. Entering	% Graduating	No. Entering	% Graduating	No. Entering	% Graduating
TOTAL	1,832	51.6%	1,637	54.2%	1,429	60.3%	1,386	59.4%	1,579	57.6%	1,451	57.8%
African American	41	31.7%	39	35.9%	41	48.8%	44	59.1%	49	40.8%	61	52.5%
American Indian	27	29.6%	32	31.3%	28	32.1%	31	22.6%	47	38.3%	28	32.1%
Asian American	57	61.4%	53	60.4%	51	56.9%	52	55.8%	48	66.7%	46	56.5%
Hispanic	185	47.6%	162	48.1%	164	56.7%	135	57.0%	175	49.7%	152	53.9%
White	1,338	52.0%	1,249	54.7%	1,021	60.9%	979	61.7%	1,114	59.2%	1,019	58.5%
International	82	75.6%	66	77.3%	75	78.7%	78	59.0%	84	70.2%	53	69.8%
Unknown	102	43.1%	36	52.8%	49	61.2%	67	50.7%	62	56.5%	92	60.9%
MINORITY	310	46.5%	286	46.9%	284	53.2%	262	53.1%	319	49.2%	287	51.9%

	1994		1996		1998		2000		2002		2004	
	No. Entering	% Graduating	No. Entering	% Graduating	No. Entering	% Graduating	No. Entering	% Graduating	No. Entering	% Graduating	No. Entering	% Graduating
WOMEN	941	53.6%	789	57.4%	732	62.3%	707	64.4%	771	59.0%	723	59.8%
African American	20	55.0%	23	43.5%	16	62.5%	27	63.0%	24	50.0%	31	51.6%
American Indian	15	26.7%	14	35.7%	18	22.2%	23	26.1%	27	37.0%	18	33.3%
Asian American	29	69.0%	25	60.0%	29	62.1%	28	60.7%	24	58.3%	25	48.0%
Hispanic	100	50.0%	86	58.1%	89	55.1%	80	63.8%	94	53.2%	83	60.2%
White	692	53.0%	602	58.0%	533	64.4%	492	67.3%	531	60.3%	496	60.7%
International	37	81.1%	19	78.9%	25	80.0%	21	57.1%	40	75.0%	28	78.6%
Unknown	48	45.8%	20	45.0%	22	54.5%	36	58.3%	31	61.3%	42	59.5%
MINORITY	164	51.8%	148	54.1%	152	53.3%	158	57.6%	169	50.9%	157	53.5%

Fall 2004 Lower-Division Transfers Graduating in 5 Years



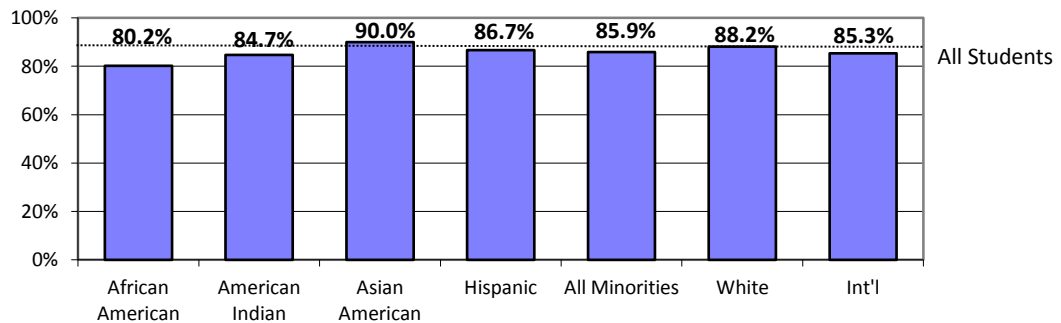
One-Year Persistence Rates for Full-Time Upper-Division Transfers ASU Total University

Upper-division transfers are new degree-seeking transfer students entering as juniors or seniors.

	1998		2000		2002		2004		2006		2008	
	No. Entering	% Persisting	No. Entering	% Persisting	No. Entering	% Persisting	No. Entering	% Persisting	No. Entering	% Persisting	No. Entering	% Persisting
TOTAL	1,646	80.2%	1,685	81.6%	2,119	83.5%	2,266	85.7%	2,102	84.3%	2,167	87.3%
African American	48	81.3%	51	82.4%	77	74.0%	83	78.3%	105	78.1%	106	80.2%
American Indian	60	65.0%	55	72.7%	69	75.4%	80	73.8%	76	65.8%	72	84.7%
Asian American	57	89.5%	58	86.2%	62	88.7%	78	85.9%	95	84.2%	100	90.0%
Hispanic	194	80.9%	212	82.1%	283	86.2%	310	86.1%	316	84.5%	360	86.7%
White	1,198	80.3%	1,176	82.0%	1,485	84.0%	1,512	87.0%	1,367	86.0%	1,391	88.2%
International	52	82.7%	55	83.6%	67	80.6%	59	79.7%	58	77.6%	34	85.3%
Unknown	37	78.4%	78	75.6%	76	77.6%	144	85.4%	85	83.5%	104	84.6%
MINORITY	359	79.7%	376	81.4%	491	83.1%	551	83.1%	592	80.9%	638	85.9%

	1998		2000		2002		2004		2006		2008	
	No. Entering	% Persisting	No. Entering	% Persisting	No. Entering	% Persisting	No. Entering	% Persisting	No. Entering	% Persisting	No. Entering	% Persisting
WOMEN	897	80.7%	957	83.3%	1,229	84.1%	1,280	87.3%	1,183	83.9%	1,216	87.7%
African American	31	83.9%	30	86.7%	42	69.0%	47	80.9%	54	77.8%	48	79.2%
American Indian	42	69.0%	38	76.3%	50	80.0%	50	78.0%	54	64.8%	49	85.7%
Asian American	27	92.6%	33	84.8%	43	93.0%	35	82.9%	46	78.3%	56	85.7%
Hispanic	112	80.4%	135	83.7%	166	86.7%	189	88.9%	191	85.9%	226	86.7%
White	642	80.4%	655	83.8%	861	84.6%	855	88.3%	762	86.4%	779	88.6%
International	24	87.5%	20	90.0%	32	84.4%	23	87.0%	27	70.4%	15	93.3%
Unknown	19	89.5%	46	73.9%	35	74.3%	81	85.2%	49	77.6%	43	88.4%
MINORITY	212	80.2%	236	83.1%	301	84.1%	321	85.4%	345	80.3%	379	85.5%

Fall 2008 Upper-Division Transfer One-Year Persistence



Four-Year Graduation Rates for Full-Time Upper-Division Transfers

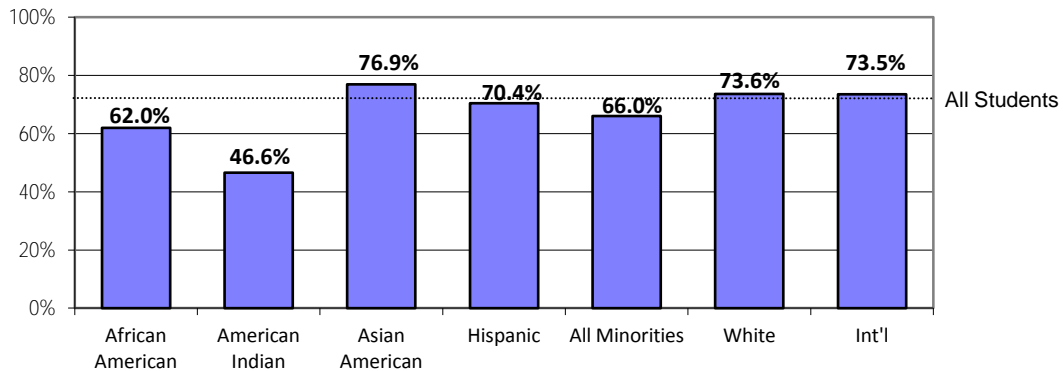
ASU Total University

Upper-division transfers are new degree-seeking transfer students entering as juniors or seniors.

	1995		1997		1999		2001		2003		2005	
	No. Entering	% Graduating	No. Entering	% Graduating	No. Entering	% Graduating	No. Entering	% Graduating	No. Entering	% Graduating	No. Entering	% Graduating
TOTAL	1,906	65.6%	1,822	69.0%	1,723	69.2%	1,814	71.6%	2,179	71.0%	2,251	71.3%
African American	51	43.1%	50	54.0%	47	48.9%	58	51.7%	106	50.9%	100	62.0%
American Indian	50	42.0%	63	49.2%	67	52.2%	85	61.2%	95	54.7%	103	46.6%
Asian American	41	61.0%	90	67.8%	65	69.2%	70	67.1%	81	70.4%	78	76.9%
Hispanic	209	68.9%	185	69.2%	208	71.6%	259	73.4%	313	64.9%	345	70.4%
White	1,437	66.7%	1,312	70.4%	1,178	70.5%	1,204	73.3%	1,406	74.3%	1,468	73.6%
International	74	68.9%	77	81.8%	55	85.5%	73	71.2%	80	86.3%	49	73.5%
Unknown	44	65.9%	45	55.6%	103	61.2%	65	69.2%	98	68.4%	108	70.4%
MINORITY	351	60.4%	388	63.7%	387	65.1%	472	67.6%	595	61.5%	626	66.0%

	1995		1997		1999		2001		2003		2005	
	No. Entering	% Graduating	No. Entering	% Graduating	No. Entering	% Graduating	No. Entering	% Graduating	No. Entering	% Graduating	No. Entering	% Graduating
WOMEN	1,023	69.9%	994	71.4%	992	70.6%	1,033	73.8%	1,245	74.4%	1,266	75.1%
African American	32	43.8%	26	61.5%	33	51.5%	38	47.4%	57	59.6%	47	63.8%
American Indian	34	41.2%	41	51.2%	51	54.9%	55	60.0%	69	56.5%	71	47.9%
Asian American	22	63.6%	46	71.7%	28	82.1%	35	68.6%	46	69.6%	45	75.6%
Hispanic	122	73.0%	111	72.1%	131	73.3%	163	79.1%	189	70.4%	225	73.8%
White	767	71.4%	717	72.5%	666	71.3%	678	75.4%	798	77.7%	813	78.0%
International	26	80.8%	34	79.4%	25	92.0%	37	75.7%	44	86.4%	18	100.0%
Unknown	20	75.0%	19	68.4%	58	65.5%	27	70.4%	42	71.4%	47	74.5%
MINORITY	210	62.4%	224	67.0%	243	67.5%	291	70.1%	361	65.9%	388	68.0%

Fall 2005 Upper-Division Transfers Graduating in 4 Years

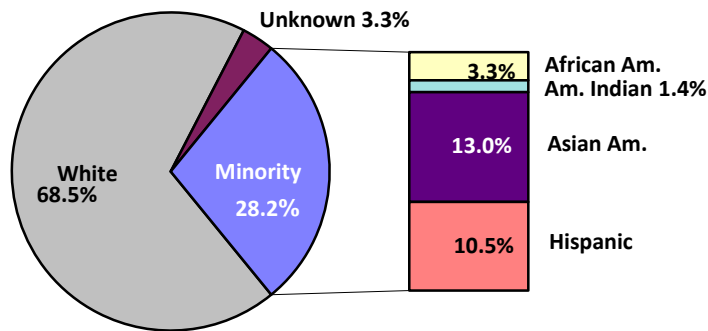


Employees

ASU Total University

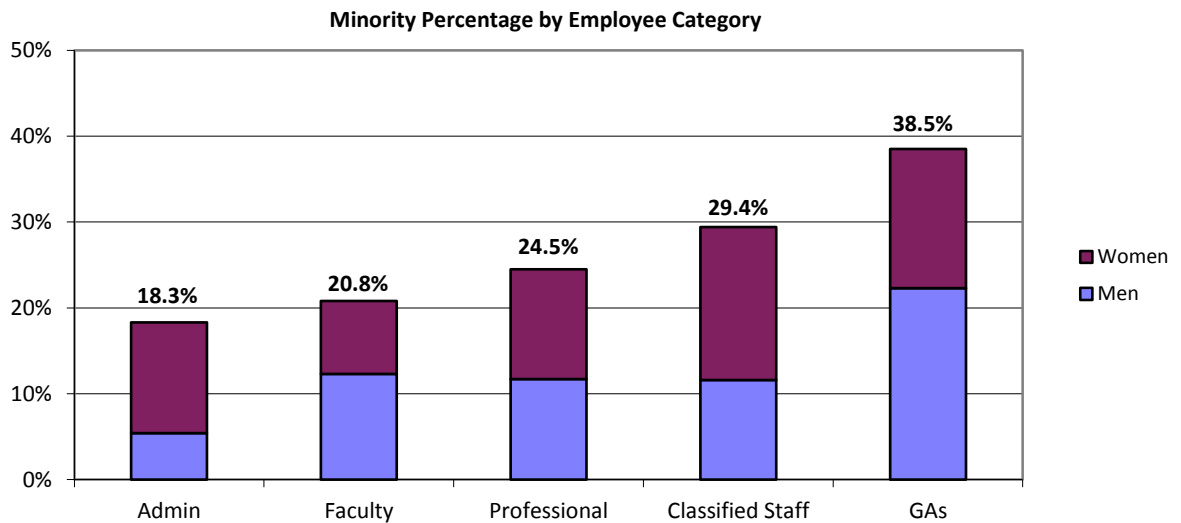
	Fall 1999		Fall 2001		Fall 2003		Fall 2005		Fall 2007		Fall 2009	
	Number	Percent	Number	Percent	Number	Percent	Number	Percent	Number	Percent	Number	Percent
TOTAL	10,340	100.0%	10,763	100.0%	11,247	100.0%	11,770	100.0%	12,436	100.0%	12,142	100.0%
African American	369	3.6%	345	3.2%	367	3.3%	413	3.5%	439	3.5%	404	3.3%
American Indian	165	1.6%	186	1.7%	188	1.7%	213	1.8%	201	1.6%	164	1.4%
Asian American	780	7.5%	1,031	9.6%	1,228	10.9%	1,263	10.7%	1,411	11.3%	1,582	13.0%
Hispanic	1,068	10.3%	1,103	10.2%	1,171	10.4%	1,289	11.0%	1,347	10.8%	1,278	10.5%
White	7,958	77.0%	8,098	75.2%	8,293	73.7%	8,592	73.0%	8,853	71.2%	8,319	68.5%
Unknown	N/A		N/A		N/A		N/A		185	1.5%	395	3.3%
MINORITY	2,382	23.0%	2,665	24.8%	2,954	26.3%	3,178	27.0%	3,398	27.3%	3,428	28.2%
WOMEN AS A % OF TOTAL	Fall 1999		Fall 2001		Fall 2003		Fall 2005		Fall 2007		Fall 2009	
	Number	Percent	Number	Percent	Number	Percent	Number	Percent	Number	Percent	Number	Percent
	5,183	50.1%	5,293	49.2%	5,656	50.3%	5,968	50.7%	6,342	51.0%	6,184	50.9%
African American	188	1.8%	166	1.5%	196	1.7%	218	1.9%	254	2.0%	234	1.9%
American Indian	85	0.8%	94	0.9%	96	0.9%	111	0.9%	101	0.8%	84	0.7%
Asian American	298	2.9%	385	3.6%	447	4.0%	509	4.3%	610	4.9%	638	5.3%
Hispanic	568	5.5%	576	5.4%	665	5.9%	708	6.0%	754	6.1%	733	6.0%
White	4,044	39.1%	4,072	37.8%	4,252	37.8%	4,422	37.6%	4,544	36.5%	4,343	35.8%
Unknown	N/A		N/A		N/A		N/A		79	0.6%	152	1.3%
MINORITY	1,139	11.0%	1,221	11.3%	1,404	12.5%	1,546	13.1%	1,719	13.8%	1,689	13.9%

Fall 2009 Total Employees



Fall 2009 Employee Categories ASU Total University

	Administrators		Faculty		Professionals		Classified Staff		GAs		Total	
	Number	Percent	Number	Percent	Number	Percent	Number	Percent	Number	Percent	Number	Percent
TOTAL	93	100.0%	2,991	100.0%	2,858	100.0%	3,249	100.0%	2,951	100.0%	12,142	100.0%
African American	7	7.5%	71	2.4%	117	4.1%	150	4.6%	59	2.0%	404	3.3%
American Indian	0	0.0%	28	0.9%	30	1.0%	85	2.6%	21	0.7%	164	1.4%
Asian American	3	3.2%	318	10.6%	291	10.2%	122	3.8%	848	28.7%	1,582	13.0%
Hispanic	7	7.5%	205	6.9%	261	9.1%	597	18.4%	208	7.0%	1,278	10.5%
White	76	81.7%	2,337	78.1%	2,103	73.6%	2,255	69.4%	1,548	52.5%	8,319	68.5%
Unknown	0	0.0%	32	1.1%	56	2.0%	40	1.2%	267	9.0%	395	3.3%
MINORITY	17	18.3%	622	20.8%	699	24.5%	954	29.4%	1,136	38.5%	3,428	28.2%
WOMEN AS A % OF TOTAL	Administrators		Faculty		Professionals		Classified Staff		GAs		Total	
	Number	Percent	Number	Percent	Number	Percent	Number	Percent	Number	Percent	Number	Percent
	49	52.7%	1,257	42.0%	1,626	56.9%	1,922	59.2%	1,330	45.1%	6,184	50.9%
African American	4	4.3%	41	1.4%	66	2.3%	91	2.8%	32	1.1%	234	1.9%
American Indian	0	0.0%	13	0.4%	15	0.5%	45	1.4%	11	0.4%	84	0.7%
Asian American	2	2.2%	112	3.7%	124	4.3%	87	2.7%	313	10.6%	638	5.3%
Hispanic	6	6.5%	89	3.0%	161	5.6%	355	10.9%	122	4.1%	733	6.0%
White	37	39.8%	991	33.1%	1,227	42.9%	1,325	40.8%	763	25.9%	4,343	35.8%
Unknown	0	0.0%	11	0.4%	33	1.2%	19	0.6%	89	3.0%	152	1.3%
MINORITY	12	12.9%	255	8.5%	366	12.8%	578	17.8%	478	16.2%	1,689	13.9%

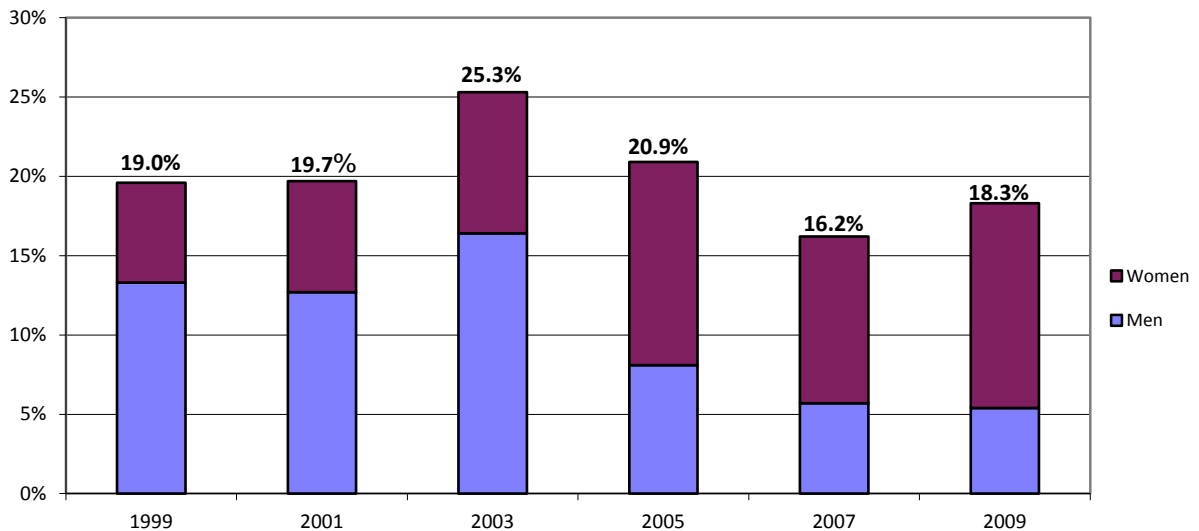


Administrators ASU Total University

(University employees in administrative positions who do not hold faculty rank.)

	Fall 1999		Fall 2001		Fall 2003		Fall 2005		Fall 2007		Fall 2009	
	Number	Percent	Number	Percent	Number	Percent	Number	Percent	Number	Percent	Number	Percent
TOTAL	63	100.0%	71	100.0%	79	100.0%	86	100.0%	105	100.0%	93	100.0%
African American	5	7.9%	7	9.9%	9	11.4%	9	10.5%	7	6.7%	7	7.5%
American Indian	0	0.0%	0	0.0%	1	1.3%	0	0.0%	0	0.0%	0	0.0%
Asian American	0	0.0%	1	1.4%	2	2.5%	2	2.3%	2	1.9%	3	3.2%
Hispanic	7	11.1%	6	8.5%	8	10.1%	7	8.1%	8	7.6%	7	7.5%
White	51	81.0%	57	80.3%	59	74.7%	68	79.1%	88	83.8%	76	81.7%
MINORITY	12	19.0%	14	19.7%	20	25.3%	18	20.9%	17	16.2%	17	18.3%
WOMEN AS A % OF TOTAL	30	47.6%	36	50.7%	39	49.4%	51	59.3%	51	48.6%	49	52.7%
African American	2	3.2%	2	2.8%	3	3.8%	5	5.8%	4	3.8%	4	4.3%
American Indian	0	0.0%	0	0.0%	0	0.0%	0	0.0%	0	0.0%	0	0.0%
Asian American	0	0.0%	1	1.4%	2	2.5%	2	2.3%	1	1.0%	2	2.2%
Hispanic	2	3.2%	2	2.8%	2	2.5%	4	4.7%	6	5.7%	6	6.5%
White	26	41.3%	31	43.7%	32	40.5%	40	46.5%	40	38.1%	37	39.8%
MINORITY	4	6.3%	5	7.0%	7	8.9%	11	12.8%	11	10.5%	12	12.9%

Minority Percentage of Administrators

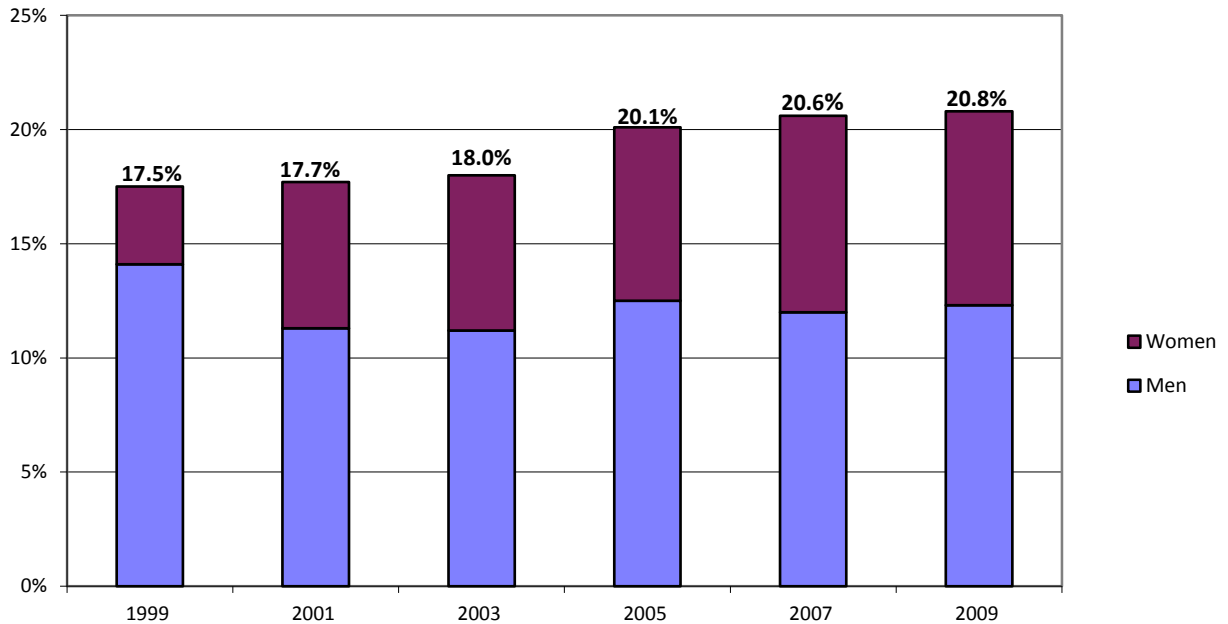


Faculty ASU Total University

(University employees holding a faculty rank of professor, associate professor, assistant professor, instructor, lecturer, or faculty associate, regardless of job title.)

	Fall 1999		Fall 2001		Fall 2003		Fall 2005		Fall 2007		Fall 2009	
	Number	Percent	Number	Percent	Number	Percent	Number	Percent	Number	Percent	Number	Percent
TOTAL	2,334	100.0%	2,389	100.0%	2,484	100.0%	2,734	100.0%	2,970	100.0%	2,991	100.0%
African American	71	3.0%	61	2.6%	60	2.4%	65	2.4%	76	2.6%	71	2.4%
American Indian	16	0.7%	21	0.9%	28	1.1%	38	1.4%	34	1.1%	28	0.9%
Asian American	168	7.2%	186	7.8%	196	7.9%	248	9.1%	291	9.8%	318	10.6%
Hispanic	153	6.6%	156	6.5%	164	6.6%	198	7.2%	210	7.1%	205	6.9%
White	1,926	82.5%	1,965	82.3%	2,036	82.0%	2,185	79.9%	2,344	78.9%	2,337	78.1%
Unknown	N/A		N/A		N/A		N/A		15	0.5%	32	1.1%
MINORITY	408	17.5%	424	17.7%	448	18.0%	549	20.1%	611	20.6%	622	20.8%
WOMEN AS A % OF TOTAL	Fall 1999		Fall 2001		Fall 2003		Fall 2005		Fall 2007		Fall 2009	
	Number	Percent	Number	Percent	Number	Percent	Number	Percent	Number	Percent	Number	Percent
WOMEN AS A % OF TOTAL	866	37.1%	903	37.8%	981	39.5%	1,091	39.9%	1,239	41.7%	1,257	42.0%
African American	33	1.4%	26	1.1%	28	1.1%	31	1.1%	44	1.5%	41	1.4%
American Indian	6	0.3%	10	0.4%	12	0.5%	15	0.5%	15	0.5%	13	0.4%
Asian American	41	1.8%	47	2.0%	59	2.4%	80	2.9%	100	3.4%	112	3.7%
Hispanic	66	2.8%	70	2.9%	71	2.9%	81	3.0%	95	3.2%	89	3.0%
White	720	30.8%	750	31.4%	811	32.6%	884	32.3%	980	33.0%	991	33.1%
Unknown	N/A		N/A		N/A		N/A		5	0.2%	11	0.4%
MINORITY	80	3.4%	153	6.4%	170	6.8%	207	7.6%	254	8.6%	255	8.5%

Minority Percentage of Faculty



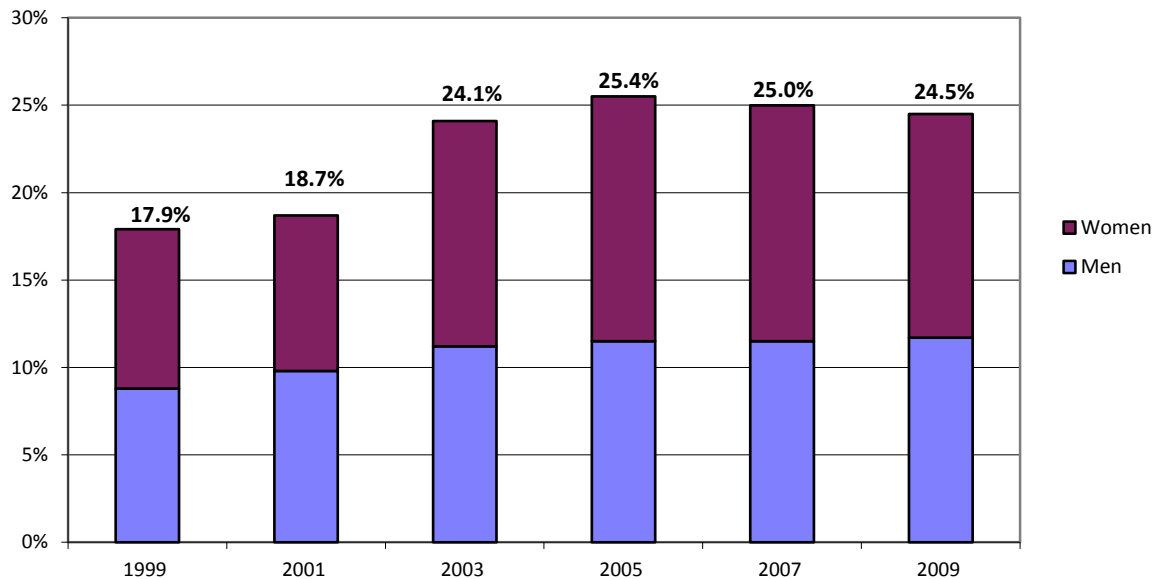
Professionals

ASU Total University

(University employees including academic advisors, postdoctoral scholars, librarians, computer systems analysts, research support staff, and business professionals.)

	Fall 1999		Fall 2001		Fall 2003		Fall 2005		Fall 2007		Fall 2009	
	Number	Percent	Number	Percent	Number	Percent	Number	Percent	Number	Percent	Number	Percent
TOTAL	1,106	100.0%	1,254	100.0%	1,535	100.0%	1,897	100.0%	2,525	100.0%	2,858	100.0%
African American	40	3.6%	45	3.6%	65	4.2%	76	4.0%	105	4.2%	117	4.1%
American Indian	18	1.6%	18	1.4%	21	1.4%	20	1.1%	29	1.1%	30	1.0%
Asian American	59	5.3%	86	6.9%	134	8.7%	185	9.8%	246	9.7%	291	10.2%
Hispanic	81	7.3%	85	6.8%	150	9.8%	201	10.6%	252	10.0%	261	9.1%
White	908	82.1%	1,020	81.3%	1,165	75.9%	1,415	74.6%	1,878	74.4%	2,103	73.6%
Unknown	N/A		N/A		N/A		N/A		15	0.6%	56	2.0%
MINORITY	198	17.9%	234	18.7%	370	24.1%	482	25.4%	632	25.0%	699	24.5%
WOMEN AS A % OF TOTAL	Fall 1999		Fall 2001		Fall 2003		Fall 2005		Fall 2007		Fall 2009	
	Number	Percent	Number	Percent	Number	Percent	Number	Percent	Number	Percent	Number	Percent
	576	52.1%	675	53.8%	839	54.7%	1,057	55.7%	1,394	55.2%	1,626	56.9%
African American	20	1.8%	18	1.4%	32	2.1%	41	2.2%	60	2.4%	66	2.3%
American Indian	9	0.8%	9	0.7%	12	0.8%	11	0.6%	16	0.6%	15	0.5%
Asian American	22	2.0%	34	2.7%	45	2.9%	75	4.0%	111	4.4%	124	4.3%
Hispanic	50	4.5%	51	4.1%	109	7.1%	138	7.3%	154	6.1%	161	5.6%
White	475	42.9%	563	44.9%	641	41.8%	792	41.8%	1,046	41.4%	1,227	42.9%
Unknown	N/A		N/A		N/A		N/A		7	0.3%	33	1.2%
MINORITY	101	9.1%	112	8.9%	198	12.9%	265	14.0%	341	13.5%	366	12.8%

Minority Percentage of Professionals

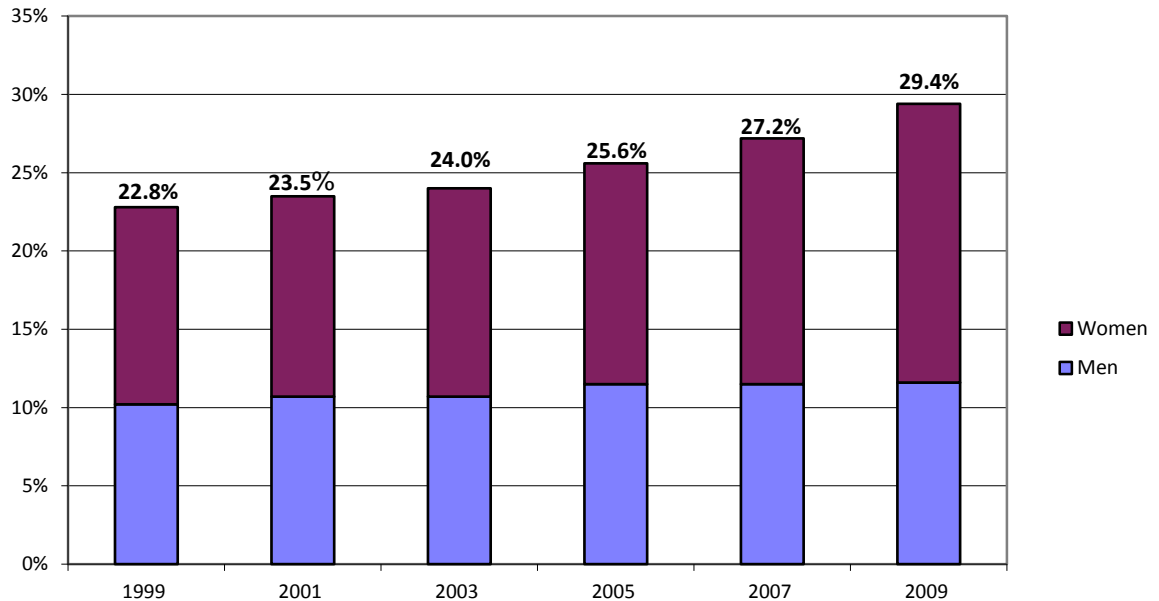


Classified Staff ASU Total University

(Other Staff include office support, skilled crafts, and service/maintenance staff.)

	Fall 1999		Fall 2001		Fall 2003		Fall 2005		Fall 2007		Fall 2009	
	Number	Percent	Number	Percent	Number	Percent	Number	Percent	Number	Percent	Number	Percent
TOTAL	4,879	100.0%	4,830	100.0%	4,826	100.0%	4,764	100.0%	4,281	100.0%	3,249	100.0%
African American	210	4.3%	182	3.8%	191	4.0%	210	4.4%	191	4.5%	150	4.6%
American Indian	111	2.3%	118	2.4%	111	2.3%	130	2.7%	121	2.8%	85	2.6%
Asian American	139	2.8%	161	3.3%	177	3.7%	178	3.7%	161	3.8%	122	3.8%
Hispanic	652	13.4%	672	13.9%	678	14.0%	702	14.7%	690	16.1%	597	18.4%
White	3,767	77.2%	3,697	76.5%	3,669	76.0%	3,544	74.4%	3,106	72.6%	2,255	69.4%
Unknown	N/A		N/A		N/A		N/A		12	0.3%	40	1.2%
MINORITY	1,112	22.8%	1,133	23.5%	1,157	24.0%	1,220	25.6%	1,163	27.2%	954	29.4%
WOMEN AS A % OF TOTAL	Fall 1999		Fall 2001		Fall 2003		Fall 2005		Fall 2007		Fall 2009	
	Number	Percent	Number	Percent	Number	Percent	Number	Percent	Number	Percent	Number	Percent
% OF TOTAL	2,799	57.4%	2,694	55.8%	2,723	56.4%	2,668	56.0%	2,432	56.8%	1,922	59.2%
African American	109	2.2%	96	2.0%	106	2.2%	115	2.4%	112	2.6%	91	2.8%
American Indian	59	1.2%	57	1.2%	59	1.2%	70	1.5%	60	1.4%	45	1.4%
Asian American	91	1.9%	102	2.1%	100	2.1%	104	2.2%	108	2.5%	87	2.7%
Hispanic	355	7.3%	364	7.5%	376	7.8%	381	8.0%	393	9.2%	355	10.9%
White	2,185	44.8%	2,075	43.0%	2,082	43.1%	1,998	41.9%	1,751	40.9%	1,325	40.8%
Unknown	N/A		N/A		N/A		N/A		8	0.2%	19	0.6%
MINORITY	614	12.6%	619	12.8%	641	13.3%	670	14.1%	673	15.7%	578	17.8%

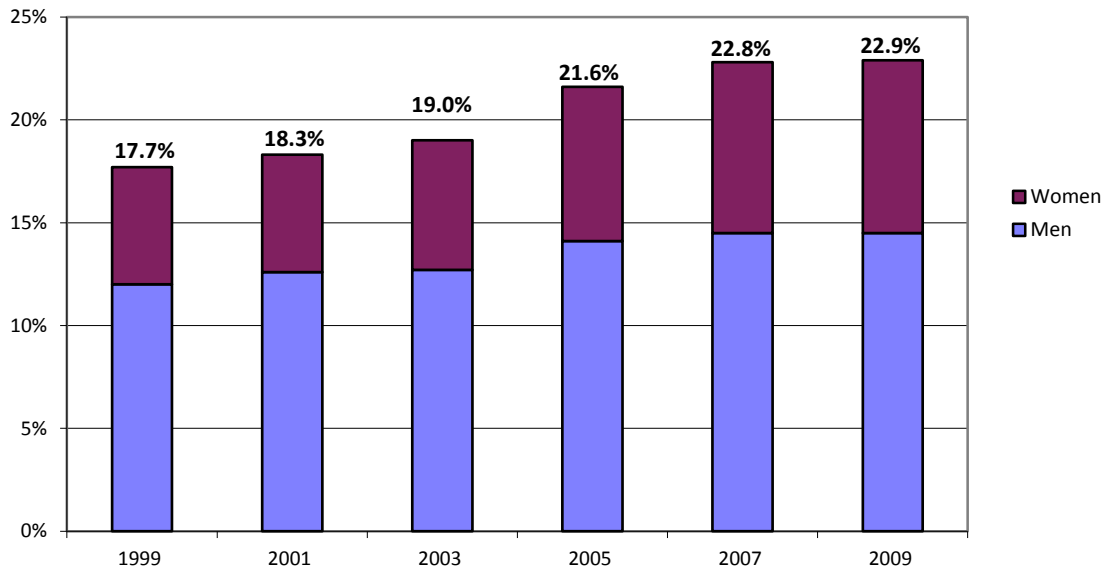
Minority Percentage of Classified Staff



Tenured/Tenure-Track Faculty ASU Total University

	Fall 1999		Fall 2001		Fall 2003		Fall 2005		Fall 2007		Fall 2009	
	Number	Percent	Number	Percent	Number	Percent	Number	Percent	Number	Percent	Number	Percent
TOTAL	1,635	100.0%	1,657	100.0%	1,665	100.0%	1,758	100.0%	1,824	100.0%	1,841	100.0%
African American	46	2.8%	43	2.6%	47	2.8%	49	2.8%	50	2.7%	45	2.4%
American Indian	15	0.9%	17	1.0%	18	1.1%	27	1.5%	25	1.4%	19	1.0%
Asian American	112	6.9%	130	7.8%	133	8.0%	166	9.4%	198	10.9%	210	11.4%
Hispanic	116	7.1%	114	6.9%	118	7.1%	137	7.8%	143	7.8%	148	8.0%
White	1,346	82.3%	1,353	81.7%	1,349	81.0%	1,379	78.4%	1,403	76.9%	1,403	76.2%
Unknown	N/A		N/A		N/A		N/A		5	0.3%	16	0.9%
MINORITY	289	17.7%	304	18.3%	316	19.0%	379	21.6%	416	22.8%	422	22.9%
WOMEN AS A % OF TOTAL	Fall 1999		Fall 2001		Fall 2003		Fall 2005		Fall 2007		Fall 2009	
	Number	Percent	Number	Percent	Number	Percent	Number	Percent	Number	Percent	Number	Percent
	493	30.2%	508	30.7%	533	32.0%	588	33.4%	625	34.3%	631	34.3%
African American	19	1.2%	18	1.1%	20	1.2%	24	1.4%	23	1.3%	20	1.1%
American Indian	6	0.4%	9	0.5%	9	0.5%	11	0.6%	9	0.5%	8	0.4%
Asian American	25	1.5%	24	1.4%	31	1.9%	44	2.5%	60	3.3%	67	3.6%
Hispanic	44	2.7%	43	2.6%	45	2.7%	52	3.0%	59	3.2%	59	3.2%
White	399	24.4%	414	25.0%	428	25.7%	457	26.0%	472	25.9%	471	25.6%
Unknown	N/A		N/A		N/A		N/A		2	0.1%	6	0.3%
MINORITY	94	5.7%	94	5.7%	105	6.3%	131	7.5%	151	8.3%	154	8.4%

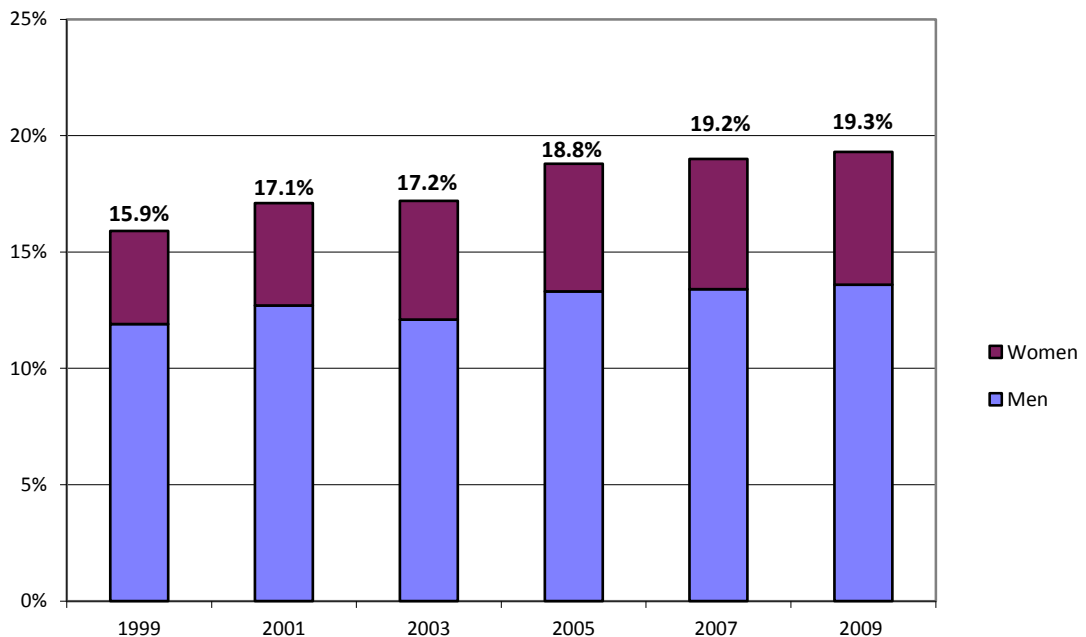
Minority Percentage of Tenured/Tenure-Track Faculty



Tenured Faculty ASU Total University

	Fall 1999		Fall 2001		Fall 2003		Fall 2005		Fall 2007		Fall 2009	
	Number	Percent	Number	Percent	Number	Percent	Number	Percent	Number	Percent	Number	Percent
TOTAL	1,286	100.0%	1,307	100.0%	1,300	100.0%	1,279	100.0%	1,307	100.0%	1,359	100.0%
African American	32	2.5%	29	2.2%	34	2.6%	33	2.6%	35	2.7%	33	2.4%
American Indian	11	0.9%	12	0.9%	11	0.8%	13	1.0%	16	1.2%	13	1.0%
Asian American	76	5.9%	91	7.0%	94	7.2%	102	8.0%	107	8.2%	117	8.6%
Hispanic	86	6.7%	91	7.0%	85	6.5%	92	7.2%	93	7.1%	99	7.3%
White	1,081	84.1%	1,084	82.9%	1,076	82.8%	1,039	81.2%	1,055	80.7%	1,090	80.2%
Unknown	N/A		N/A		N/A		N/A		1	0.1%	7	0.5%
MINORITY	205	15.9%	223	17.1%	224	17.2%	240	18.8%	251	19.2%	262	19.3%
WOMEN AS A % OF TOTAL	Fall 1999		Fall 2001		Fall 2003		Fall 2005		Fall 2007		Fall 2009	
	Number	Percent	Number	Percent	Number	Percent	Number	Percent	Number	Percent	Number	Percent
	309	24.0%	342	26.2%	360	27.7%	368	28.8%	388	29.7%	410	30.2%
African American	12	0.9%	11	0.8%	14	1.1%	13	1.0%	13	1.0%	12	0.9%
American Indian	3	0.2%	4	0.3%	4	0.3%	4	0.3%	4	0.3%	4	0.3%
Asian American	9	0.7%	11	0.8%	18	1.4%	21	1.6%	22	1.7%	27	2.0%
Hispanic	28	2.2%	32	2.4%	30	2.3%	32	2.5%	34	2.6%	34	2.5%
White	257	20.0%	284	21.7%	294	22.6%	298	23.3%	314	24.0%	332	24.4%
Unknown	N/A		N/A		N/A		N/A		1	0.1%	1	0.1%
MINORITY	52	4.0%	58	4.4%	66	5.1%	70	5.5%	73	5.6%	77	5.7%

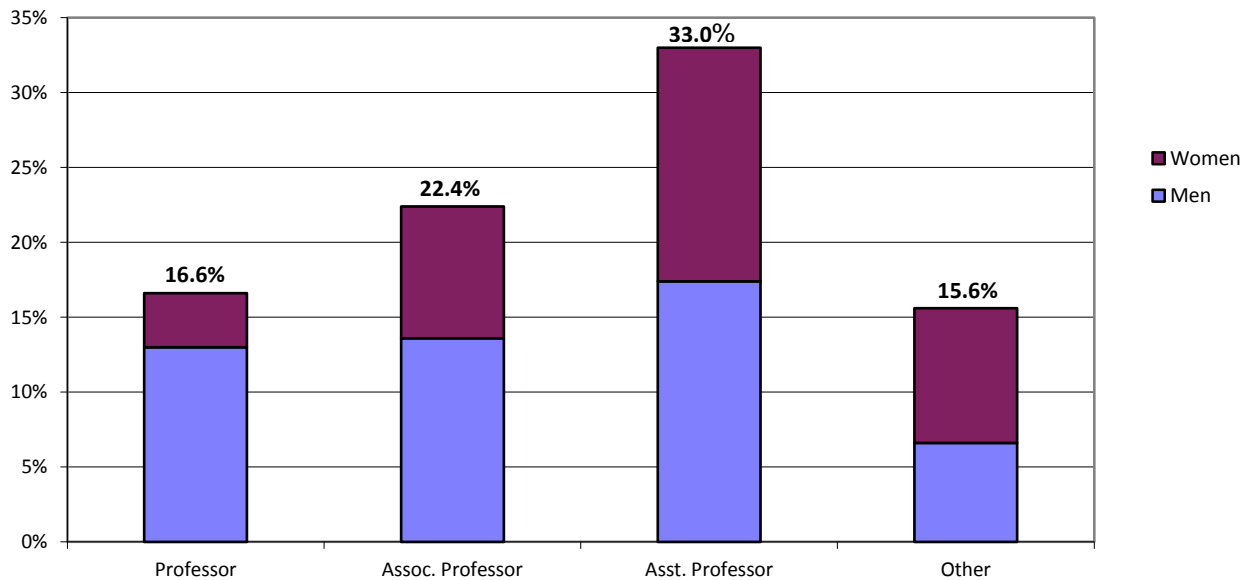
Minority Percentage of Tenured Faculty



Fall 2009 Faculty Rank ASU Total University

	Professor		Associate		Assistant		Other		Total	
	Number	Percent	Number	Percent	Number	Percent	Number	Percent	Number	Percent
TOTAL	954	100.0%	656	100.0%	585	100.0%	796	100.0%	2,991	100.0%
African American	19	2.0%	21	3.2%	16	2.7%	15	1.9%	71	2.4%
American Indian	13	1.4%	3	0.5%	6	1.0%	6	0.8%	28	0.9%
Asian American	71	7.4%	69	10.5%	116	19.8%	62	7.8%	318	10.6%
Hispanic	55	5.8%	54	8.2%	55	9.4%	41	5.2%	205	6.9%
White	788	82.6%	507	77.3%	380	65.0%	662	83.2%	2,337	78.1%
Unknown	8	0.8%	2	0.3%	12	2.1%	10	1.3%	32	1.1%
MINORITY	158	16.6%	147	22.4%	193	33.0%	124	15.6%	622	20.8%
WOMEN AS A % OF TOTAL	Professor		Associate		Assistant		Other		Total	
	Number	Percent	Number	Percent	Number	Percent	Number	Percent	Number	Percent
% OF TOTAL	230	24.1%	275	41.9%	280	47.9%	472	59.3%	1,257	42.0%
African American	8	0.8%	9	1.4%	12	2.1%	12	1.5%	41	1.4%
American Indian	3	0.3%	1	0.2%	4	0.7%	5	0.6%	13	0.4%
Asian American	11	1.2%	24	3.7%	47	8.0%	30	3.8%	112	3.7%
Hispanic	12	1.3%	24	3.7%	28	4.8%	25	3.1%	89	3.0%
White	195	20.4%	217	33.1%	182	31.1%	397	49.9%	991	33.1%
Unknown	1	0.1%	0	0.0%	7	1.2%	3	0.4%	11	0.4%
MINORITY	34	3.6%	58	8.8%	91	15.6%	72	9.0%	255	8.5%

Minority Percentage by Faculty Rank



GLOSSARY

ASU Students

First-time Freshmen

New degree-seeking undergraduates who graduated from high school the previous year and new freshmen with fewer than 12 transfer credits.

Lower-Division Transfers

New degree-seeking transfer students entering as freshmen or sophomores.

Upper-Division Transfers

New degree-seeking transfer students entering as juniors or seniors.

Persistence Rates

The percentage of full-time first-time freshmen, lower-division transfers, or upper-division transfers entering in a given fall semester who enrolled the following fall semester (i.e., one year after entry). When computing persistence rates, per federal reporting guidelines, students are excluded if they left the university due to death, permanent disability, military activation, or church mission service.

Graduation Rates

The percentage of full-time first-time freshmen entering in a given fall semester who graduated within six years (i.e., prior to the sixth fall semester after entry), the percentage of full-time lower-division transfers entering in a given fall semester who graduated within five years, or the percentage of full-time upper-division transfers entering in a given fall semester who graduated within four years. When computing graduation rates, per federal reporting guidelines students are excluded if they left the university due to death, permanent disability, military activation, or church mission service.

ASU Employees

Administrators

University employees in administrative positions who do not hold faculty rank.

Faculty

University employees holding a faculty rank of professor, associate professor, assistant professor, instructor, lecturer, or faculty associate, regardless of job title.

Tenured/Tenure-Track Faculty

Faculty who have been granted tenure or will have the opportunity to be reviewed for tenure.

Nontenured Faculty

Faculty who are not eligible for tenure review including clinical, research, adjunct, and visiting faculty.

Professionals

University employees including academic advisors, postdoctoral scholars, librarians, computer systems analysts, research support staff, and business professionals.

Classified Staff

University employees including office support staff, service/maintenance staff, accountants, buyers, editors, events coordinators, and research technicians.