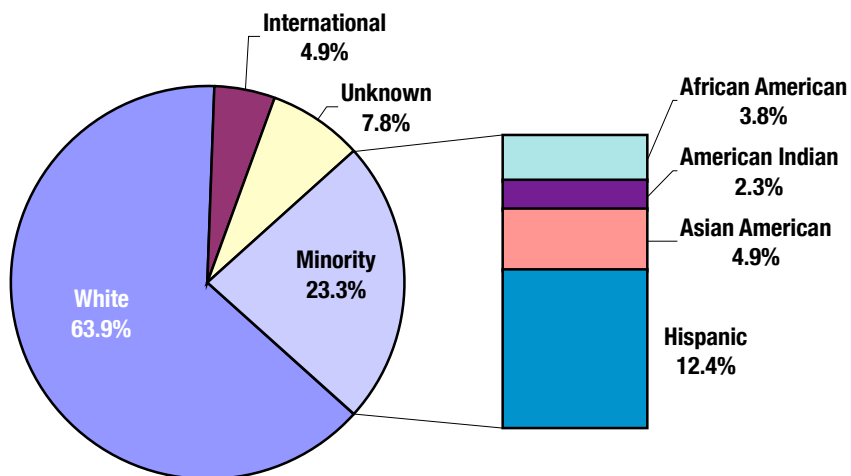


Total Enrollment

ASU Total University

	Fall 1996		Fall 1998		Fall 2000		Fall 2002		Fall 2004		Fall 2006	
	Number	Percent	Number	Percent	Number	Percent	Number	Percent	Number	Percent	Number	Percent
TOTAL	47,051	100.0%	48,922	100.0%	50,365	100.0%	55,491	100.0%	58,156	100.0%	63,278	100.0%
African American	1,265	2.7%	1,405	2.9%	1,516	3.0%	1,768	3.2%	2,045	3.5%	2,391	3.8%
American Indian	902	1.9%	989	2.0%	994	2.0%	1,166	2.1%	1,237	2.1%	1,427	2.3%
Asian American	1,900	4.0%	2,130	4.4%	2,213	4.4%	2,535	4.6%	2,756	4.7%	3,092	4.9%
Hispanic	4,468	9.5%	4,903	10.0%	5,213	10.4%	6,018	10.8%	6,816	11.7%	7,859	12.4%
White	34,528	73.4%	35,244	72.0%	35,379	70.2%	38,494	69.4%	38,904	66.9%	40,430	63.9%
International	2,659	5.7%	2,916	6.0%	3,188	6.3%	3,544	6.4%	2,991	5.1%	3,116	4.9%
Unknown	1,329	2.8%	1,335	2.7%	1,862	3.7%	1,966	3.5%	3,407	5.9%	4,963	7.8%
MINORITY	8,535	18.1%	9,427	19.3%	9,936	19.7%	11,487	20.7%	12,854	22.1%	14,769	23.3%
WOMEN AS A % OF TOTAL	Fall 1996	Fall 1998	Fall 2000	Fall 2002	Fall 2004	Fall 2006						
	Number	Percent	Number	Percent	Number	Percent	Number	Percent	Number	Percent	Number	Percent
	24,335	51.7%	25,832	52.8%	26,937	53.5%	29,728	53.6%	30,923	53.2%	33,379	52.7%
African American	711	1.5%	781	1.6%	866	1.7%	1,024	1.8%	1,217	2.1%	1,327	2.1%
American Indian	557	1.2%	636	1.3%	644	1.3%	745	1.3%	793	1.4%	930	1.5%
Asian American	1,008	2.1%	1,110	2.3%	1,120	2.2%	1,304	2.3%	1,409	2.4%	1,606	2.5%
Hispanic	2,504	5.3%	2,808	5.7%	3,059	6.1%	3,579	6.4%	4,007	6.9%	4,562	7.2%
White	18,018	38.3%	18,793	38.4%	19,190	38.1%	20,845	37.6%	20,633	35.5%	21,149	33.4%
International	913	1.9%	1,046	2.1%	1,097	2.2%	1,234	2.2%	1,107	1.9%	1,169	1.8%
Unknown	624	1.3%	658	1.3%	961	1.9%	997	1.8%	1,757	3.0%	2,636	4.2%
MINORITY	4,780	10.2%	5,335	10.9%	5,689	11.3%	6,652	12.0%	7,426	12.8%	8,425	13.3%

**Fall 2006
Total Enrollment**

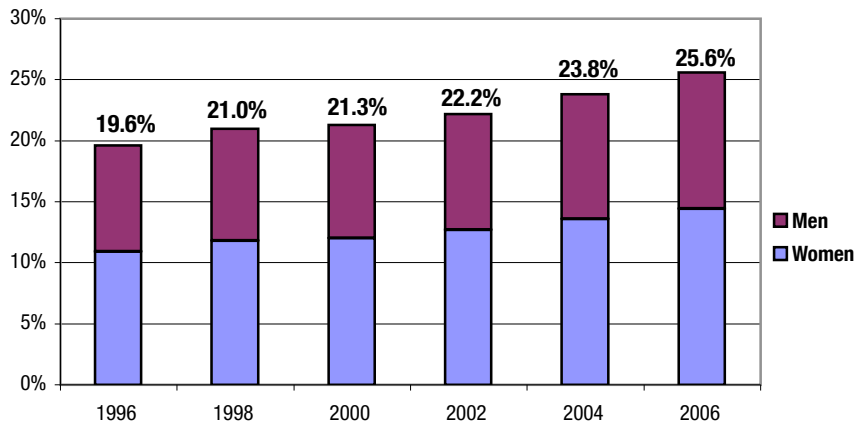


Undergraduate Enrollment

ASU Total University

	Fall 1996		Fall 1998		Fall 2000		Fall 2002		Fall 2004		Fall 2006	
	Number	Percent	Number	Percent	Number	Percent	Number	Percent	Number	Percent	Number	Percent
TOTAL	35,144	100.0%	37,043	100.0%	38,399	100.0%	42,877	100.0%	46,670	100.0%	50,755	100.0%
African American	1,009	2.9%	1,117	3.0%	1,235	3.2%	1,461	3.4%	1,735	3.7%	2,082	4.1%
American Indian	732	2.1%	820	2.2%	803	2.1%	942	2.2%	1,071	2.3%	1,225	2.4%
Asian American	1,497	4.3%	1,709	4.6%	1,837	4.8%	2,074	4.8%	2,330	5.0%	2,676	5.3%
Hispanic	3,664	10.4%	4,145	11.2%	4,317	11.2%	5,056	11.8%	5,991	12.8%	6,999	13.8%
White	26,095	74.3%	27,072	73.1%	27,465	71.5%	30,446	71.0%	32,456	69.5%	34,641	68.3%
International	1,212	3.4%	1,302	3.5%	1,271	3.3%	1,324	3.1%	1,203	2.6%	1,140	2.2%
Unknown	935	2.7%	878	2.4%	1,471	3.8%	1,574	3.7%	1,884	4.0%	1,992	3.9%
MINORITY	6,902	19.6%	7,791	21.0%	8,192	21.3%	9,533	22.2%	11,127	23.8%	12,982	25.6%
WOMEN AS A % OF TOTAL	Fall 1996		Fall 1998		Fall 2000		Fall 2002		Fall 2004		Fall 2006	
	Number	Percent	Number	Percent	Number	Percent	Number	Percent	Number	Percent	Number	Percent
	18,046	51.3%	19,556	52.8%	20,606	53.7%	22,946	53.5%	24,801	53.1%	26,672	52.6%
African American	546	1.6%	598	1.6%	687	1.8%	822	1.9%	1,014	2.2%	1,131	2.2%
American Indian	441	1.3%	524	1.4%	514	1.3%	590	1.4%	684	1.5%	791	1.6%
Asian American	801	2.3%	910	2.5%	928	2.4%	1,052	2.5%	1,180	2.5%	1,370	2.7%
Hispanic	2,053	5.8%	2,349	6.3%	2,495	6.5%	2,968	6.9%	3,482	7.5%	4,030	7.9%
White	13,298	37.8%	14,252	38.5%	14,738	38.4%	16,194	37.8%	17,046	36.5%	17,935	35.3%
International	470	1.3%	502	1.4%	483	1.3%	517	1.2%	462	1.0%	439	0.9%
Unknown	437	1.2%	421	1.1%	761	2.0%	803	1.9%	933	2.0%	976	1.9%
MINORITY	3,841	10.9%	4,381	11.8%	4,624	12.0%	5,432	12.7%	6,360	13.6%	7,322	14.4%

Minority Percentage of Undergraduate Enrollment

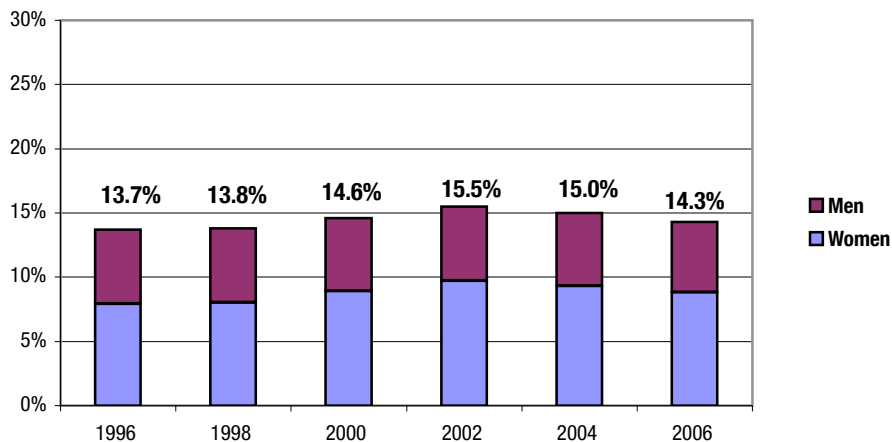


Graduate Enrollment

ASU Total University

	Fall 1996		Fall 1998		Fall 2000		Fall 2002		Fall 2004		Fall 2006	
	Number	Percent	Number	Percent	Number	Percent	Number	Percent	Number	Percent	Number	Percent
TOTAL	11,907	100.0%	11,879	100.0%	11,966	100.0%	12,614	100.0%	11,486	100.0%	12,523	100.0%
African American	256	2.1%	288	2.4%	281	2.3%	307	2.4%	310	2.7%	309	2.5%
American Indian	170	1.4%	169	1.4%	191	1.6%	224	1.8%	166	1.4%	202	1.6%
Asian American	403	3.4%	421	3.5%	376	3.1%	461	3.7%	426	3.7%	416	3.3%
Hispanic	804	6.8%	758	6.4%	896	7.5%	962	7.6%	825	7.2%	860	6.9%
White	8,433	70.8%	8,172	68.8%	7,914	66.1%	8,048	63.8%	6,448	56.1%	5,789	46.2%
International	1,447	12.2%	1,614	13.6%	1,917	16.0%	2,220	17.6%	1,788	15.6%	1,976	15.8%
Unknown	394	3.3%	457	3.8%	391	3.3%	392	3.1%	1,523	13.3%	2,971	23.7%
MINORITY	1,633	13.7%	1,636	13.8%	1,744	14.6%	1,954	15.5%	1,727	15.0%	1,787	14.3%
WOMEN AS A % OF TOTAL	6,289	52.8%	6,276	52.8%	6,331	52.9%	6,782	53.8%	6,122	53.3%	6,707	53.6%
African American	165	1.4%	183	1.5%	179	1.5%	202	1.6%	203	1.8%	196	1.6%
American Indian	116	1.0%	112	0.9%	130	1.1%	155	1.2%	109	0.9%	139	1.1%
Asian American	207	1.7%	200	1.7%	192	1.6%	252	2.0%	229	2.0%	236	1.9%
Hispanic	451	3.8%	459	3.9%	564	4.7%	611	4.8%	525	4.6%	532	4.2%
White	4,720	39.6%	4,541	38.2%	4,452	37.2%	4,651	36.9%	3,587	31.2%	3,214	25.7%
International	443	3.7%	544	4.6%	614	5.1%	717	5.7%	645	5.6%	730	5.8%
Unknown	187	1.6%	237	2.0%	200	1.7%	194	1.5%	824	7.2%	1,660	13.3%
MINORITY	939	7.9%	954	8.0%	1,065	8.9%	1,220	9.7%	1,066	9.3%	1,103	8.8%

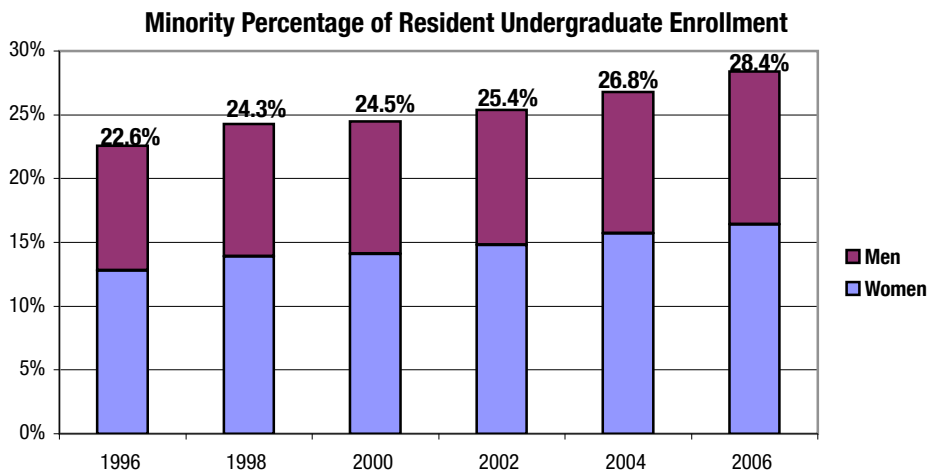
Minority Percentage of Graduate Enrollment



Resident Undergraduate Enrollment

ASU Total University

	Fall 1996		Fall 1998		Fall 2000		Fall 2002		Fall 2004		Fall 2006	
	Number	Percent	Number	Percent	Number	Percent	Number	Percent	Number	Percent	Number	Percent
TOTAL	26,216	100.0%	27,889	100.0%	29,169	100.0%	33,036	100.0%	35,889	100.0%	38,568	100.0%
African American	791	3.0%	877	3.1%	988	3.4%	1,189	3.6%	1,367	3.8%	1,543	4.0%
American Indian	657	2.5%	757	2.7%	753	2.6%	882	2.7%	1,001	2.8%	1,141	3.0%
Asian American	1,248	4.8%	1,445	5.2%	1,561	5.4%	1,751	5.3%	1,924	5.4%	2,162	5.6%
Hispanic	3,241	12.4%	3,703	13.3%	3,853	13.2%	4,558	13.8%	5,338	14.9%	6,108	15.8%
White	19,495	74.4%	20,332	72.9%	20,773	71.2%	23,306	70.5%	24,715	68.9%	25,943	67.3%
International	54	0.2%	90	0.3%	155	0.5%	139	0.4%	84	0.2%	106	0.3%
Unknown	730	2.8%	685	2.5%	1,086	3.7%	1,211	3.7%	1,460	4.1%	1,565	4.1%
MINORITY	5,937	22.6%	6,782	24.3%	7,155	24.5%	8,380	25.4%	9,630	26.8%	10,954	28.4%
WOMEN AS A % OF TOTAL	Fall 1996		Fall 1998		Fall 2000		Fall 2002		Fall 2004		Fall 2006	
	Number	Percent	Number	Percent	Number	Percent	Number	Percent	Number	Percent	Number	Percent
	13,803	52.7%	15,091	54.1%	16,111	55.2%	18,168	55.0%	19,600	54.6%	20,900	54.2%
African American	452	1.7%	495	1.8%	573	2.0%	697	2.1%	841	2.3%	890	2.3%
American Indian	400	1.5%	488	1.7%	484	1.7%	552	1.7%	643	1.8%	735	1.9%
Asian American	678	2.6%	778	2.8%	794	2.7%	908	2.7%	1,004	2.8%	1,133	2.9%
Hispanic	1,836	7.0%	2,113	7.6%	2,272	7.8%	2,726	8.3%	3,159	8.8%	3,582	9.3%
White	10,060	38.4%	10,833	38.8%	11,330	38.8%	12,573	38.1%	13,164	36.7%	13,703	35.5%
International	34	0.1%	50	0.2%	89	0.3%	90	0.3%	51	0.1%	54	0.1%
Unknown	343	1.3%	334	1.2%	569	2.0%	622	1.9%	738	2.1%	803	2.1%
MINORITY	3,366	12.8%	3,874	13.9%	4,123	14.1%	4,883	14.8%	5,647	15.7%	6,340	16.4%

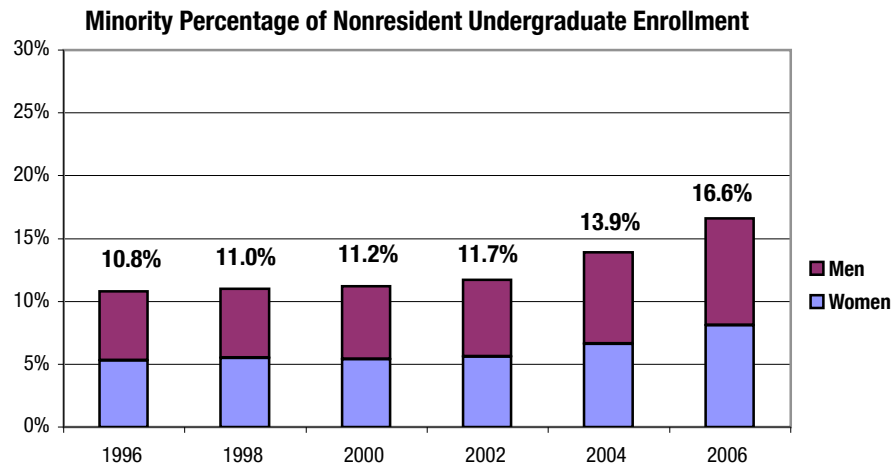


Nonresident Undergraduate Enrollment

ASU Total University

	Fall 1996		Fall 1998		Fall 2000		Fall 2002		Fall 2004		Fall 2006	
	Number	Percent	Number	Percent	Number	Percent	Number	Percent	Number	Percent	Number	Percent
TOTAL	8,928	100.0%	9,154	100.0%	9,230	100.0%	9,841	100.0%	10,781	100.0%	12,187	100.0%
African American	218	2.4%	240	2.6%	247	2.7%	272	2.8%	368	3.4%	539	4.4%
American Indian	75	0.8%	63	0.7%	50	0.5%	60	0.6%	70	0.6%	84	0.7%
Asian American	249	2.8%	264	2.9%	276	3.0%	323	3.3%	406	3.8%	514	4.2%
Hispanic	423	4.7%	442	4.8%	464	5.0%	498	5.1%	653	6.1%	891	7.3%
White	6,600	73.9%	6,740	73.6%	6,692	72.5%	7,140	72.6%	7,741	71.8%	8,698	71.4%
International	1,158	13.0%	1,212	13.2%	1,116	12.1%	1,185	12.0%	1,119	10.4%	1,034	8.5%
Unknown	205	2.3%	193	2.1%	385	4.2%	363	3.7%	424	3.9%	427	3.5%
MINORITY	965	10.8%	1,009	11.0%	1,037	11.2%	1,153	11.7%	1,497	13.9%	2,028	16.6%

	Fall 1996		Fall 1998		Fall 2000		Fall 2002		Fall 2004		Fall 2006	
	Number	Percent	Number	Percent	Number	Percent	Number	Percent	Number	Percent	Number	Percent
WOMEN AS A % OF TOTAL	4,243	47.5%	4,465	48.8%	4,495	48.7%	4,778	48.6%	5,201	48.2%	5,772	47.4%
African American	94	1.1%	103	1.1%	114	1.2%	125	1.3%	173	1.6%	241	2.0%
American Indian	41	0.5%	36	0.4%	30	0.3%	38	0.4%	41	0.4%	56	0.5%
Asian American	123	1.4%	132	1.4%	134	1.5%	144	1.5%	176	1.6%	237	1.9%
Hispanic	217	2.4%	236	2.6%	223	2.4%	242	2.5%	323	3.0%	448	3.7%
White	3,238	36.3%	3,419	37.3%	3,408	36.9%	3,621	36.8%	3,882	36.0%	4,232	34.7%
International	436	4.9%	452	4.9%	394	4.3%	427	4.3%	411	3.8%	385	3.2%
Unknown	94	1.1%	87	1.0%	192	2.1%	181	1.8%	195	1.8%	173	1.4%
MINORITY	475	5.3%	507	5.5%	501	5.4%	549	5.6%	713	6.6%	982	8.1%

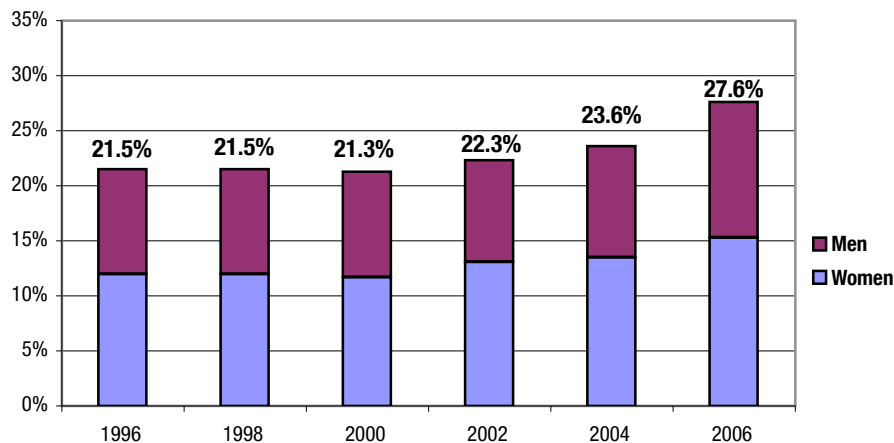


New First-time Freshmen

ASU Total University

	Fall 1996		Fall 1998		Fall 2000		Fall 2002		Fall 2004		Fall 2006	
	Number	Percent	Number	Percent	Number	Percent	Number	Percent	Number	Percent	Number	Percent
TOTAL	4,320	100.0%	4,999	100.0%	6,117	100.0%	6,820	100.0%	7,719	100.0%	9,052	100.0%
African American	132	3.1%	148	3.0%	194	3.2%	215	3.2%	267	3.5%	425	4.7%
American Indian	95	2.2%	109	2.2%	118	1.9%	148	2.2%	158	2.0%	196	2.2%
Asian American	218	5.0%	254	5.1%	322	5.3%	353	5.2%	393	5.1%	550	6.1%
Hispanic	485	11.2%	566	11.3%	671	11.0%	808	11.8%	1,001	13.0%	1,330	14.7%
White	3,192	73.9%	3,642	72.9%	4,433	72.5%	4,856	71.2%	5,416	70.2%	6,058	66.9%
International	105	2.4%	147	2.9%	132	2.2%	108	1.6%	113	1.5%	147	1.6%
Unknown	93	2.2%	133	2.7%	247	4.0%	332	4.9%	371	4.8%	346	3.8%
MINORITY	930	21.5%	1,077	21.5%	1,305	21.3%	1,524	22.3%	1,819	23.6%	2,501	27.6%
WOMEN AS A % OF TOTAL	Fall 1996		Fall 1998		Fall 2000		Fall 2002		Fall 2004		Fall 2006	
	Number	Percent	Number	Percent	Number	Percent	Number	Percent	Number	Percent	Number	Percent
	2,271	52.6%	2,677	53.6%	3,211	52.5%	3,732	54.7%	4,151	53.8%	4,729	52.2%
African American	72	1.7%	72	1.4%	112	1.8%	123	1.8%	166	2.2%	219	2.4%
American Indian	62	1.4%	71	1.4%	67	1.1%	82	1.2%	98	1.3%	119	1.3%
Asian American	107	2.5%	139	2.8%	156	2.6%	197	2.9%	200	2.6%	290	3.2%
Hispanic	277	6.4%	317	6.3%	378	6.2%	490	7.2%	579	7.5%	759	8.4%
White	1,680	38.9%	1,959	39.2%	2,335	38.2%	2,616	38.4%	2,888	37.4%	3,128	34.6%
International	33	0.8%	56	1.1%	45	0.7%	44	0.6%	38	0.5%	45	0.5%
Unknown	40	0.9%	63	1.3%	118	1.9%	180	2.6%	182	2.4%	169	1.9%
MINORITY	518	12.0%	599	12.0%	713	11.7%	892	13.1%	1,043	13.5%	1,387	15.3%

Minority Percentage of New First-time Freshmen

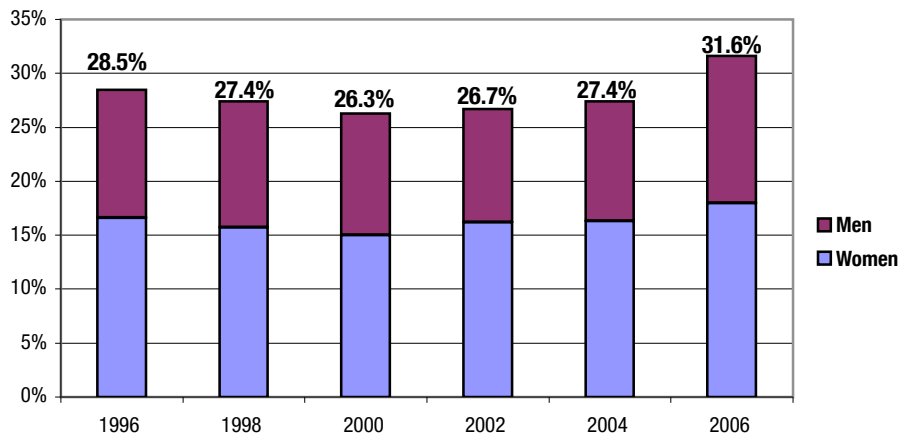


New Resident First-time Freshmen

ASU Total University

	Fall 1996		Fall 1998		Fall 2000		Fall 2002		Fall 2004		Fall 2006	
	Number	Percent	Number	Percent	Number	Percent	Number	Percent	Number	Percent	Number	Percent
TOTAL	2,463	100.0%	3,166	100.0%	3,777	100.0%	4,582	100.0%	5,107	100.0%	5,922	100.0%
African American	79	3.2%	99	3.1%	113	3.0%	148	3.2%	172	3.4%	247	4.2%
American Indian	84	3.4%	97	3.1%	101	2.7%	129	2.8%	139	2.7%	176	3.0%
Asian American	161	6.5%	207	6.5%	240	6.4%	273	6.0%	287	5.6%	409	6.9%
Hispanic	379	15.4%	464	14.7%	541	14.3%	672	14.7%	803	15.7%	1,041	17.6%
White	1,699	69.0%	2,211	69.8%	2,608	69.0%	3,108	67.8%	3,461	67.8%	3,808	64.3%
International	2	0.1%	11	0.3%	20	0.5%	22	0.5%	17	0.3%	14	0.2%
Unknown	59	2.4%	77	2.4%	154	4.1%	230	5.0%	228	4.5%	227	3.8%
MINORITY	703	28.5%	867	27.4%	995	26.3%	1,222	26.7%	1,401	27.4%	1,873	31.6%
WOMEN AS A % OF TOTAL	1,349	54.8%	1,747	55.2%	2,064	54.6%	2,585	56.4%	2,828	55.4%	3,231	54.6%
African American	49	2.0%	57	1.8%	77	2.0%	94	2.1%	117	2.3%	138	2.3%
American Indian	55	2.2%	65	2.1%	57	1.5%	71	1.5%	87	1.7%	103	1.7%
Asian American	81	3.3%	113	3.6%	121	3.2%	157	3.4%	156	3.1%	217	3.7%
Hispanic	224	9.1%	263	8.3%	311	8.2%	422	9.2%	474	9.3%	607	10.2%
White	915	37.1%	1,206	38.1%	1,407	37.3%	1,699	37.1%	1,867	36.6%	2,038	34.4%
International	1	0.0%	6	0.2%	12	0.3%	13	0.3%	9	0.2%	7	0.1%
Unknown	24	1.0%	37	1.2%	79	2.1%	129	2.8%	118	2.3%	121	2.0%
MINORITY	409	16.6%	498	15.7%	566	15.0%	744	16.2%	834	16.3%	1,065	18.0%

Minority Percentage of New Resident First-time Freshmen

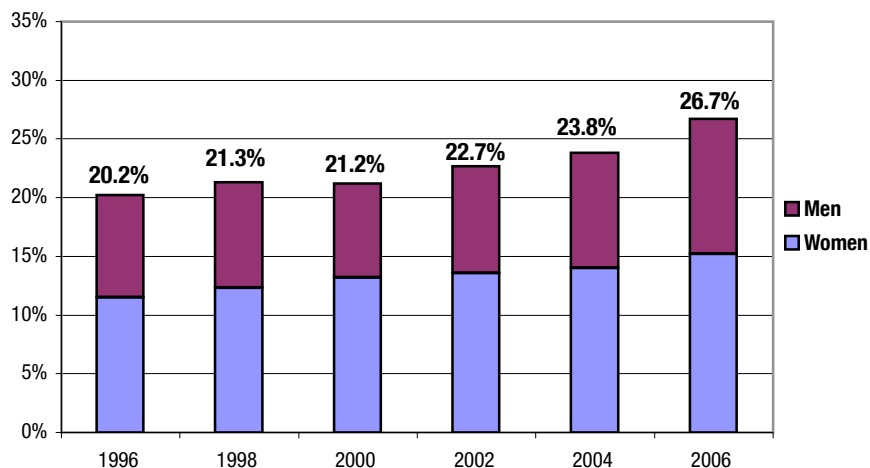


New Transfers

ASU Total University

	Fall 1996		Fall 1998		Fall 2000		Fall 2002		Fall 2004		Fall 2006	
	Number	Percent	Number	Percent	Number	Percent	Number	Percent	Number	Percent	Number	Percent
TOTAL	5,056	100.0%	4,628	100.0%	4,668	100.0%	5,531	100.0%	5,374	100.0%	5,063	100.0%
African American	147	2.9%	147	3.2%	154	3.3%	215	3.9%	231	4.3%	222	4.4%
American Indian	133	2.6%	119	2.6%	118	2.5%	155	2.8%	142	2.6%	156	3.1%
Asian American	185	3.7%	165	3.6%	165	3.5%	174	3.1%	190	3.5%	225	4.4%
Hispanic	557	11.0%	554	12.0%	552	11.8%	710	12.8%	717	13.3%	748	14.8%
White	3,764	74.4%	3,351	72.4%	3,303	70.8%	3,867	69.9%	3,631	67.6%	3,385	66.9%
International	148	2.9%	163	3.5%	169	3.6%	198	3.6%	139	2.6%	123	2.4%
Unknown	122	2.4%	129	2.8%	207	4.4%	212	3.8%	324	6.0%	204	4.0%
MINORITY	1,022	20.2%	985	21.3%	989	21.2%	1,254	22.7%	1,280	23.8%	1,351	26.7%
WOMEN AS A % OF TOTAL	Fall 1996		Fall 1998		Fall 2000		Fall 2002		Fall 2004		Fall 2006	
	Number	Percent	Number	Percent	Number	Percent	Number	Percent	Number	Percent	Number	Percent
WOMEN AS A % OF TOTAL	2,645	52.3%	2,551	55.1%	2,604	55.8%	3,027	54.7%	2,965	55.2%	2,753	54.4%
African American	79	1.6%	79	1.7%	91	1.9%	124	2.2%	129	2.4%	108	2.1%
American Indian	75	1.5%	80	1.7%	86	1.8%	108	2.0%	96	1.8%	115	2.3%
Asian American	104	2.1%	89	1.9%	99	2.1%	99	1.8%	97	1.8%	119	2.4%
Hispanic	321	6.3%	323	7.0%	342	7.3%	423	7.6%	429	8.0%	429	8.5%
White	1,941	38.4%	1,845	39.9%	1,810	38.8%	2,071	37.4%	1,980	36.8%	1,810	35.7%
International	66	1.3%	68	1.5%	61	1.3%	101	1.8%	66	1.2%	50	1.0%
Unknown	59	1.2%	67	1.4%	115	2.5%	101	1.8%	168	3.1%	122	2.4%
MINORITY	579	11.5%	571	12.3%	618	13.2%	754	13.6%	751	14.0%	771	15.2%

Minority Percentage of New Transfers

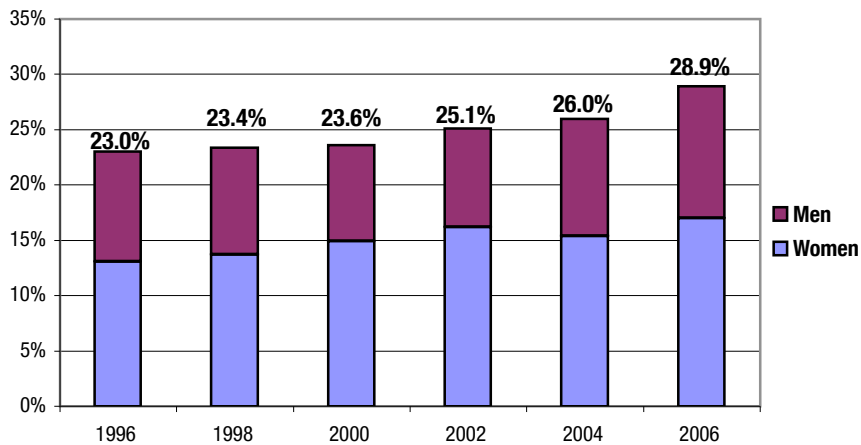


New Resident Transfers

ASU Total University

	Fall 1996		Fall 1998		Fall 2000		Fall 2002		Fall 2004		Fall 2006	
	Number	Percent	Number	Percent	Number	Percent	Number	Percent	Number	Percent	Number	Percent
TOTAL	3,816	100.0%	3,670	100.0%	3,703	100.0%	4,482	100.0%	4,334	100.0%	4,060	100.0%
African American	124	3.2%	120	3.3%	132	3.6%	181	4.0%	192	4.4%	181	4.5%
American Indian	117	3.1%	111	3.0%	111	3.0%	147	3.3%	133	3.1%	147	3.6%
Asian American	141	3.7%	137	3.7%	137	3.7%	145	3.2%	152	3.5%	172	4.2%
Hispanic	494	12.9%	490	13.4%	493	13.3%	651	14.5%	652	15.0%	674	16.6%
White	2,845	74.6%	2,699	73.5%	2,657	71.8%	3,171	70.7%	2,949	68.0%	2,714	66.8%
International	6	0.2%	16	0.4%	13	0.4%	21	0.5%	5	0.1%	5	0.1%
Unknown	89	2.3%	97	2.6%	160	4.3%	166	3.7%	251	5.8%	167	4.1%
MINORITY	876	23.0%	858	23.4%	873	23.6%	1,124	25.1%	1,129	26.0%	1,174	28.9%
WOMEN AS A % OF TOTAL	Fall 1996		Fall 1998		Fall 2000		Fall 2002		Fall 2004		Fall 2006	
	Number	Percent	Number	Percent	Number	Percent	Number	Percent	Number	Percent	Number	Percent
	2,051	53.7%	2,092	57.0%	2,141	57.8%	2,514	56.1%	2,450	56.5%	2,292	56.5%
African American	69	1.8%	66	1.8%	80	2.2%	103	2.3%	110	2.5%	93	2.3%
American Indian	67	1.8%	77	2.1%	81	2.2%	101	2.3%	91	2.1%	110	2.7%
Asian American	77	2.0%	76	2.1%	82	2.2%	84	1.9%	76	1.8%	89	2.2%
Hispanic	286	7.5%	285	7.8%	309	8.3%	394	8.8%	390	9.0%	399	9.8%
White	1,500	39.3%	1,530	41.7%	1,491	40.3%	1,731	38.6%	1,647	38.0%	1,495	36.8%
International	5	0.1%	8	0.2%	10	0.3%	20	0.4%	5	0.1%	4	0.1%
Unknown	47	1.2%	50	1.4%	88	2.4%	81	1.8%	131	3.0%	102	2.5%
MINORITY	499	13.1%	504	13.7%	552	14.9%	682	15.2%	667	15.4%	691	17.0%

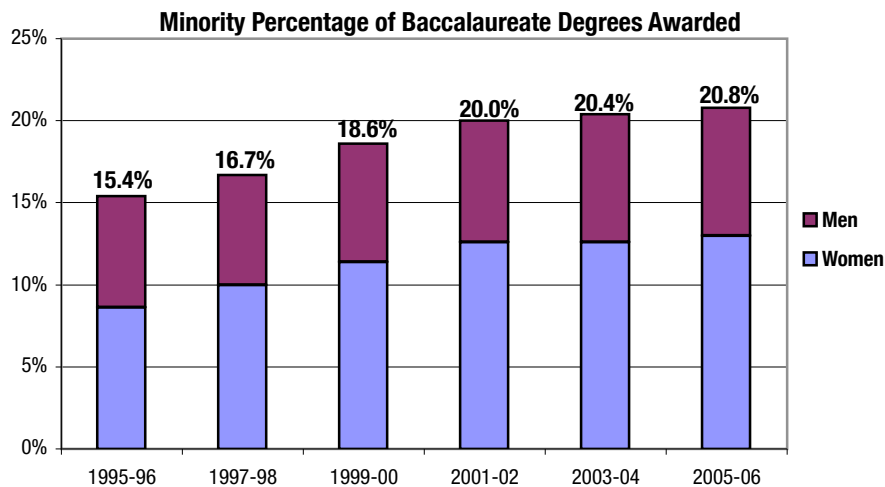
Minority Percentage of New Resident Transfers



Baccalaureate Degrees

ASU Total University

	1995-96		1997-98		1999-00		2001-02		2003-04		2005-06	
	Number	Percent	Number	Percent	Number	Percent	Number	Percent	Number	Percent	Number	Percent
TOTAL	6,545	100.0%	7,312	100.0%	7,940	100.0%	8,190	100.0%	9,116	100.0%	9,855	100.0%
African American	140	2.1%	152	2.1%	191	2.4%	214	2.6%	240	2.6%	283	2.9%
American Indian	69	1.1%	106	1.4%	140	1.8%	158	1.9%	163	1.8%	155	1.6%
Asian American	251	3.8%	269	3.7%	332	4.2%	364	4.4%	413	4.5%	455	4.6%
Hispanic	548	8.4%	692	9.5%	811	10.2%	905	11.1%	1,042	11.4%	1,154	11.7%
White	5,169	79.0%	5,604	76.6%	6,017	75.8%	6,100	74.5%	6,608	72.5%	7,007	71.1%
International	232	3.5%	318	4.3%	296	3.7%	269	3.3%	322	3.5%	310	3.1%
Unknown	136	2.1%	171	2.3%	153	1.9%	180	2.2%	328	3.6%	491	5.0%
MINORITY	1,008	15.4%	1,219	16.7%	1,474	18.6%	1,641	20.0%	1,858	20.4%	2,047	20.8%
WOMEN AS A % OF TOTAL	1995-96		1997-98		1999-00		2001-02		2003-04		2005-06	
	Number	Percent	Number	Percent	Number	Percent	Number	Percent	Number	Percent	Number	Percent
	3,526	53.9%	4,006	54.8%	4,408	55.5%	4,749	58.0%	5,250	57.6%	5,562	56.4%
African American	82	1.3%	91	1.2%	109	1.4%	134	1.6%	142	1.6%	175	1.8%
American Indian	39	0.6%	77	1.1%	92	1.2%	129	1.6%	110	1.2%	112	1.1%
Asian American	122	1.9%	154	2.1%	187	2.4%	209	2.6%	217	2.4%	254	2.6%
Hispanic	317	4.8%	408	5.6%	514	6.5%	556	6.8%	684	7.5%	739	7.5%
White	2,806	42.9%	3,050	41.7%	3,295	41.5%	3,502	42.8%	3,771	41.4%	3,903	39.6%
International	102	1.6%	132	1.8%	126	1.6%	114	1.4%	134	1.5%	110	1.1%
Unknown	58	0.9%	94	1.3%	85	1.1%	105	1.3%	192	2.1%	269	2.7%
MINORITY	560	8.6%	730	10.0%	902	11.4%	1,028	12.6%	1,153	12.6%	1,280	13.0%

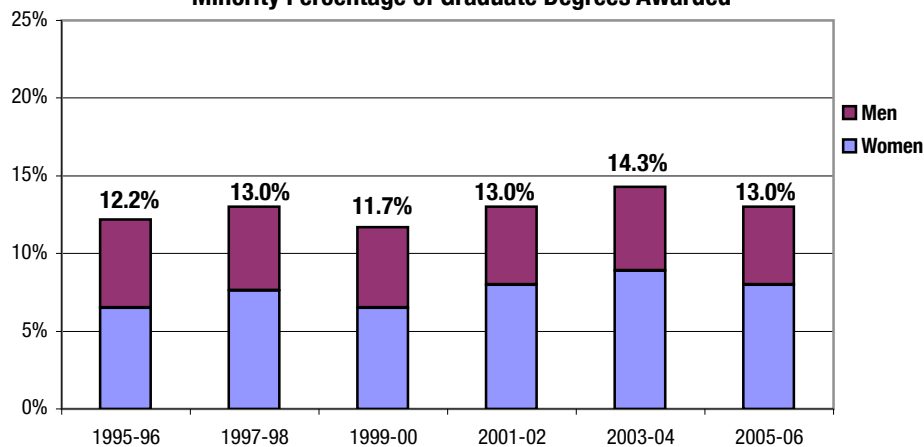


Graduate Degrees

ASU Total University

	1995-96		1997-98		1999-00		2001-02		2003-04		2005-06	
	Number	Percent	Number	Percent	Number	Percent	Number	Percent	Number	Percent	Number	Percent
TOTAL	2,520	100.0%	2,781	100.0%	2,923	100.0%	3,088	100.0%	3,410	100.0%	3,200	100.0%
African American	49	1.9%	58	2.1%	50	1.7%	66	2.1%	81	2.4%	65	2.0%
American Indian	24	1.0%	30	1.1%	38	1.3%	42	1.4%	46	1.3%	55	1.7%
Asian American	92	3.7%	92	3.3%	90	3.1%	96	3.1%	127	3.7%	104	3.3%
Hispanic	142	5.6%	182	6.5%	165	5.6%	196	6.3%	234	6.9%	193	6.0%
White	1,736	68.9%	1,839	66.1%	1,937	66.3%	2,046	66.3%	1,995	58.5%	1,615	50.5%
International	419	16.6%	496	17.8%	549	18.8%	549	17.8%	816	23.9%	664	20.8%
Unknown	58	2.3%	84	3.0%	94	3.2%	93	3.0%	111	3.3%	504	15.8%
MINORITY	307	12.2%	362	13.0%	343	11.7%	400	13.0%	488	14.3%	417	13.0%
WOMEN AS A % OF TOTAL	1995-96		1997-98		1999-00		2001-02		2003-04		2005-06	
	Number	Percent	Number	Percent	Number	Percent	Number	Percent	Number	Percent	Number	Percent
	1,297	51.5%	1,410	50.7%	1,498	51.2%	1,608	52.1%	1,707	50.1%	1,584	49.5%
African American	27	1.1%	37	1.3%	33	1.1%	45	1.5%	51	1.5%	50	1.6%
American Indian	18	0.7%	19	0.7%	26	0.9%	31	1.0%	27	0.8%	39	1.2%
Asian American	45	1.8%	46	1.7%	42	1.4%	43	1.4%	74	2.2%	44	1.4%
Hispanic	75	3.0%	109	3.9%	89	3.0%	127	4.1%	150	4.4%	124	3.9%
White	972	38.6%	1,011	36.4%	1,064	36.4%	1,128	36.5%	1,106	32.4%	867	27.1%
International	126	5.0%	146	5.2%	204	7.0%	195	6.3%	243	7.1%	220	6.9%
Unknown	34	1.3%	42	1.5%	40	1.4%	39	1.3%	56	1.6%	240	7.5%
MINORITY	165	6.5%	211	7.6%	190	6.5%	246	8.0%	302	8.9%	257	8.0%

Minority Percentage of Graduate Degrees Awarded



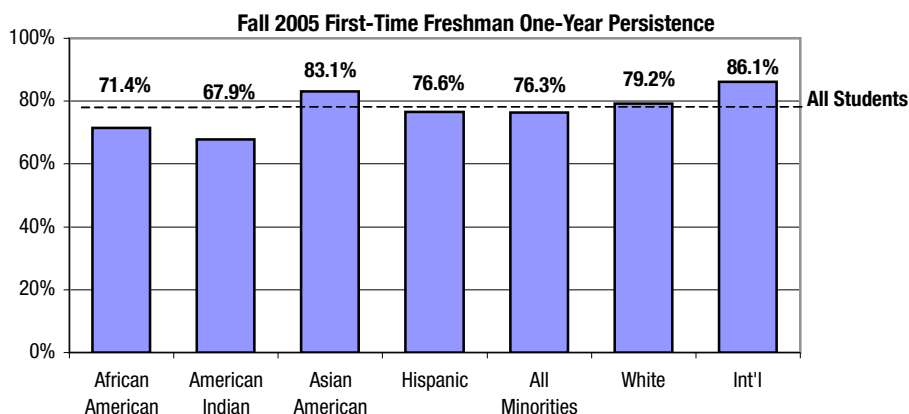
One-Year Persistence Rates for First-Time Full-Time Freshmen

ASU Total University

First-time freshmen are full-time new degree-seeking undergraduates who graduated from high school the previous year and new freshmen with fewer than 12 transfer hours.

	1995		1997		1999		2001		2003		2005	
	No. Entering	% Persisting	No. Entering	% Persisting	No. Entering	% Persisting	No. Entering	% Persisting	No. Entering	% Persisting	No. Entering	% Persisting
TOTAL	3,945	71.2%	4,961	73.3%	5,667	73.0%	6,198	76.6%	7,228	76.8%	7,927	78.5%
African American	111	65.8%	174	73.6%	154	65.6%	202	68.8%	295	72.5%	343	71.4%
American Indian	94	54.3%	124	68.5%	106	67.0%	126	71.4%	144	68.8%	193	67.9%
Asian American	197	76.6%	261	77.8%	267	80.9%	337	84.0%	401	85.3%	443	83.1%
Hispanic	457	70.9%	507	75.0%	565	70.3%	645	77.4%	935	72.5%	1,082	76.6%
White	2,893	71.2%	3,703	72.6%	3,879	73.5%	4,538	76.4%	5,072	77.2%	5,361	79.2%
International	95	81.1%	92	79.3%	115	82.6%	144	85.4%	139	80.6%	115	86.1%
Unknown	98	75.5%	100	76.0%	581	70.2%	206	72.8%	242	77.3%	390	79.0%
MINORITY	859	69.7%	1,066	74.7%	1,092	71.9%	1,310	77.2%	1,775	75.1%	2,061	76.3%

	1995		1997		1999		2001		2003		2005	
	No. Entering	% Persisting	No. Entering	% Persisting	No. Entering	% Persisting	No. Entering	% Persisting	No. Entering	% Persisting	No. Entering	% Persisting
WOMEN	2,096	72.9%	2,652	76.6%	3,110	75.5%	3,347	77.6%	3,933	77.0%	4,267	78.6%
African American	62	66.1%	100	75.0%	86	65.1%	103	67.0%	181	72.9%	205	71.7%
American Indian	60	53.3%	88	73.9%	64	67.2%	84	71.4%	90	67.8%	120	67.5%
Asian American	109	82.6%	151	80.1%	125	82.4%	173	80.9%	200	86.0%	218	85.8%
Hispanic	256	71.5%	261	80.1%	334	73.7%	363	77.7%	533	72.6%	621	76.3%
White	1,527	73.2%	1,963	76.0%	2,148	76.4%	2,470	77.9%	2,753	77.6%	2,875	79.3%
International	35	88.6%	34	79.4%	38	73.7%	45	91.1%	51	86.3%	38	81.6%
Unknown	47	72.3%	55	78.2%	315	74.0%	109	76.1%	125	79.2%	190	81.6%
MINORITY	487	71.0%	600	78.3%	609	73.6%	723	76.2%	1,004	74.9%	1,164	76.4%



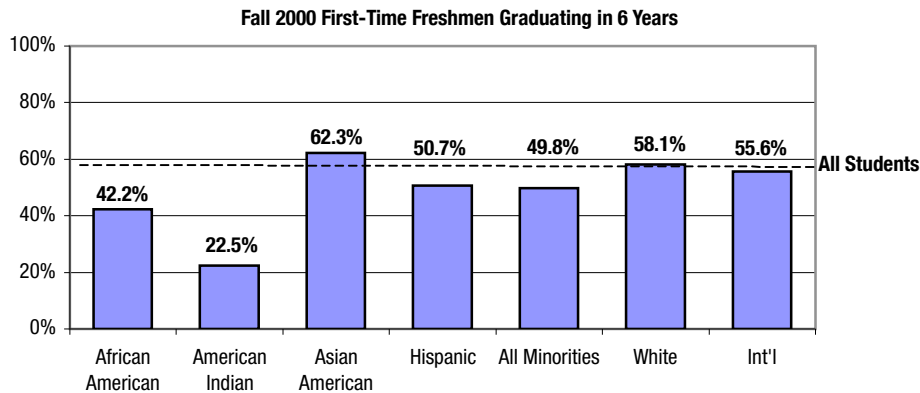
Six-Year Graduation Rates for First-Time Full-Time Freshmen

ASU Total University

First-time freshmen are full-time new degree-seeking undergraduates who graduated from high school the previous year and new freshmen with fewer than 12 transfer hours.

	1990		1992		1994		1996		1998		2000	
	No. Entering	% Graduating	No. Entering	% Graduating	No. Entering	% Graduating	No. Entering	% Graduating	No. Entering	% Graduating	No. Entering	% Graduating
TOTAL	3,038	46.0%	2,901	46.7%	3,833	47.2%	4,060	51.8%	4,772	54.6%	5,754	56.3%
African American	62	33.9%	82	36.6%	127	31.5%	121	38.8%	143	46.9%	187	42.2%
American Indian	52	15.4%	71	18.3%	87	13.8%	93	33.3%	104	24.0%	111	22.5%
Asian American	136	53.7%	133	53.4%	193	55.4%	203	58.6%	244	60.2%	305	62.3%
Hispanic	234	36.8%	289	41.2%	417	40.8%	454	43.2%	530	50.4%	633	50.7%
White	2,408	48.7%	2,149	47.6%	2,771	48.9%	3,003	53.4%	3,484	55.5%	4,170	58.1%
International	100	40.0%	93	66.7%	102	65.7%	100	66.0%	139	69.1%	124	55.6%
Unknown	46	47.8%	84	45.2%	136	43.4%	86	46.5%	128	53.1%	224	59.8%
MINORITY	484	38.6%	575	40.5%	824	39.9%	871	45.1%	1,021	49.6%	1,236	49.8%

	1990		1992		1994		1996		1998		2000	
	No. Entering	% Graduating	No. Entering	% Graduating	No. Entering	% Graduating	No. Entering	% Graduating	No. Entering	% Graduating	No. Entering	% Graduating
WOMEN	1,464	52.0%	1,503	51.3%	1,972	50.1%	2,138	55.9%	2,572	57.2%	3,071	59.9%
African American	36	30.6%	57	40.4%	72	37.5%	65	43.1%	69	55.1%	106	51.9%
American Indian	24	16.7%	39	20.5%	52	17.3%	60	33.3%	68	26.5%	66	30.3%
Asian American	59	71.2%	61	54.1%	104	59.6%	100	62.0%	134	64.9%	153	62.7%
Hispanic	126	43.7%	157	46.5%	213	45.5%	263	46.4%	299	52.8%	357	55.2%
White	1,156	53.5%	1,118	53.0%	1,422	51.6%	1,581	58.3%	1,890	58.1%	2,235	61.4%
International	38	47.4%	33	84.8%	38	73.7%	31	74.2%	53	71.7%	43	53.5%
Unknown	25	48.0%	38	36.8%	71	42.3%	38	52.6%	59	57.6%	111	67.6%
MINORITY	245	45.7%	314	43.6%	441	44.2%	488	47.5%	570	52.8%	682	54.0%



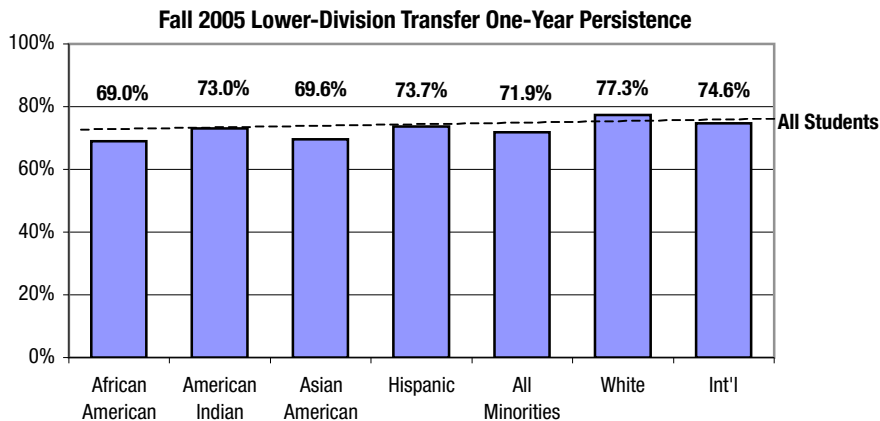
One-Year Persistence Rates for Full-Time Lower-Division Transfers

ASU Total University

Lower-division transfers are full-time new transfers entering as freshmen or sophomores.

	1995		1997		1999		2001		2003		2005	
	No. Entering	% Persisting	No. Entering	% Persisting	No. Entering	% Persisting	No. Entering	% Persisting	No. Entering	% Persisting	No. Entering	% Persisting
TOTAL	1,613	73.6%	1,745	75.4%	1,414	73.1%	1,421	74.0%	1,609	74.3%	1,540	75.8%
African American	56	67.9%	47	57.4%	48	77.1%	45	62.2%	63	55.6%	71	69.0%
American Indian	26	57.7%	42	64.3%	27	74.1%	42	57.1%	37	54.1%	37	73.0%
Asian American	50	80.0%	51	88.2%	44	77.3%	55	76.4%	62	74.2%	79	69.6%
Hispanic	176	71.6%	171	71.9%	139	71.2%	144	72.2%	186	72.6%	179	73.7%
White	1,187	73.1%	1,298	75.7%	1,000	72.6%	1,003	75.5%	1,120	74.7%	1,028	77.3%
International	76	88.2%	102	85.3%	74	75.7%	81	72.8%	67	91.0%	71	74.6%
Unknown	42	78.6%	34	70.6%	82	74.4%	51	72.5%	74	83.8%	75	74.7%
MINORITY	308	71.1%	311	71.4%	258	73.6%	286	69.2%	348	67.8%	366	71.9%

	1995		1997		1999		2001		2003		2005	
	No. Entering	% Persisting	No. Entering	% Persisting	No. Entering	% Persisting	No. Entering	% Persisting	No. Entering	% Persisting	No. Entering	% Persisting
WOMEN	805	71.3%	902	76.8%	711	74.1%	720	73.6%	823	74.7%	793	75.9%
African American	32	56.3%	28	64.3%	24	79.2%	24	58.3%	34	55.9%	37	70.3%
American Indian	14	42.9%	28	64.3%	17	76.5%	27	48.1%	26	57.7%	19	78.9%
Asian American	25	88.0%	25	92.0%	21	76.2%	37	75.7%	37	67.6%	43	69.8%
Hispanic	95	72.6%	94	73.4%	71	71.8%	80	73.8%	105	78.1%	102	74.5%
White	586	70.8%	665	77.1%	513	73.9%	502	75.7%	556	75.4%	521	77.4%
International	30	86.7%	43	86.0%	24	79.2%	29	69.0%	24	87.5%	33	78.8%
Unknown	23	78.3%	19	78.9%	41	73.2%	21	76.2%	41	82.9%	38	68.4%
MINORITY	166	69.3%	175	73.1%	133	74.4%	168	67.9%	202	69.8%	201	73.1%



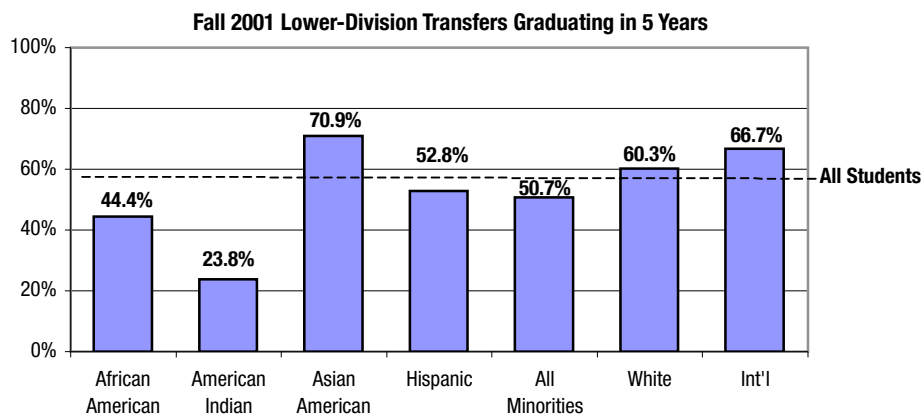
Five-Year Graduation Rates for Full-Time Lower-Division Transfers

ASU Total University

Lower-division transfers are full-time new transfers entering as freshmen or sophomores.

	1991		1993		1995		1997		1999		2001	
	No. Entering	% Graduating	No. Entering	% Graduating	No. Entering	% Graduating	No. Entering	% Graduating	No. Entering	% Graduating	No. Entering	% Graduating
TOTAL	1,468	50.7%	1,726	52.9%	1,613	53.8%	1,745	56.9%	1,414	56.9%	1,421	58.6%
African American	42	21.4%	41	36.6%	56	41.1%	47	31.9%	48	52.1%	45	44.4%
American Indian	16	25.0%	29	44.8%	26	34.6%	42	35.7%	27	51.9%	42	23.8%
Asian American	41	61.0%	55	41.8%	50	56.0%	51	56.9%	44	52.3%	55	70.9%
Hispanic	106	49.1%	146	49.3%	176	54.0%	171	49.7%	139	48.2%	144	52.8%
White	1,169	50.9%	1,309	53.6%	1,187	53.2%	1,298	58.1%	1,000	58.1%	1,003	60.3%
International	63	76.2%	84	73.8%	76	77.6%	102	76.5%	74	64.9%	81	66.7%
Unknown	31	38.7%	62	41.9%	42	52.4%	34	50.0%	82	57.3%	51	54.9%
MINORITY	205	43.9%	271	45.4%	308	50.3%	311	46.3%	258	50.0%	286	50.7%

	1991		1993		1995		1997		1999		2001	
	No. Entering	% Graduating	No. Entering	% Graduating	No. Entering	% Graduating	No. Entering	% Graduating	No. Entering	% Graduating	No. Entering	% Graduating
WOMEN	676	54.0%	796	55.5%	805	54.3%	902	61.8%	711	62.0%	720	61.9%
African American	18	27.8%	19	42.1%	32	31.3%	28	42.9%	24	54.2%	24	45.8%
American Indian	14	21.4%	16	50.0%	14	28.6%	28	35.7%	17	52.9%	27	22.2%
Asian American	16	75.0%	33	42.4%	25	68.0%	25	72.0%	21	71.4%	37	70.3%
Hispanic	52	55.8%	78	55.1%	95	62.1%	94	53.2%	71	49.3%	80	55.0%
White	542	54.1%	593	56.5%	586	52.4%	665	63.3%	513	63.0%	502	64.7%
International	23	78.3%	29	75.9%	30	83.3%	43	81.4%	24	83.3%	29	69.0%
Unknown	11	45.5%	28	42.9%	23	65.2%	19	57.9%	41	63.4%	21	66.7%
MINORITY	100	49.0%	146	50.0%	166	54.2%	175	51.4%	133	54.1%	168	51.8%

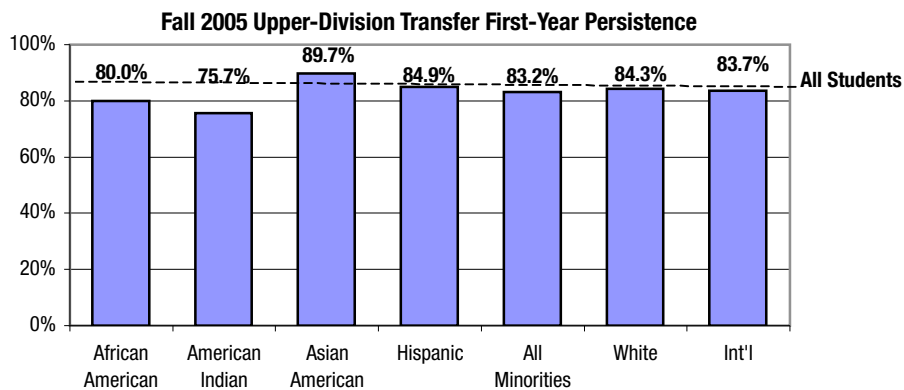


One-Year Persistence Rates for Full-Time Upper-Division Transfers ASU Total University

Upper-division transfers are full-time new transfers entering as juniors or seniors.

	1995		1997		1999		2001		2003		2005	
	No. Entering	% Persisting	No. Entering	% Persisting	No. Entering	% Persisting	No. Entering	% Persisting	No. Entering	% Persisting	No. Entering	% Persisting
TOTAL	1,906	80.0%	1,822	81.4%	1,723	80.3%	1,814	84.2%	2,179	83.9%	2,251	84.0%
African American	51	78.4%	50	64.0%	47	59.6%	58	82.8%	106	72.6%	100	80.0%
American Indian	50	66.0%	63	69.8%	67	76.1%	85	75.3%	95	78.9%	103	75.7%
Asian American	41	78.0%	90	87.8%	65	80.0%	70	80.0%	81	82.7%	78	89.7%
Hispanic	209	84.2%	185	83.8%	208	80.3%	259	85.7%	313	82.1%	345	84.9%
White	1,437	80.2%	1,312	82.0%	1,178	81.2%	1,204	84.8%	1,406	85.1%	1,468	84.3%
International	74	78.4%	77	81.8%	55	90.9%	73	82.2%	80	93.8%	49	83.7%
Unknown	44	75.0%	45	75.6%	103	75.7%	65	86.2%	98	82.7%	108	84.3%
MINORITY	351	80.1%	388	79.9%	387	77.0%	472	82.6%	595	80.0%	626	83.2%

	1995		1997		1999		2001		2003		2005	
	No. Entering	% Persisting	No. Entering	% Persisting	No. Entering	% Persisting	No. Entering	% Persisting	No. Entering	% Persisting	No. Entering	% Persisting
WOMEN	1,023	80.8%	994	82.0%	992	80.1%	1,033	84.7%	1,245	84.4%	1,266	85.5%
African American	32	81.3%	26	73.1%	33	63.6%	38	81.6%	57	71.9%	47	78.7%
American Indian	34	67.6%	41	68.3%	51	74.5%	55	74.5%	69	79.7%	71	76.1%
Asian American	22	72.7%	46	87.0%	28	96.4%	35	77.1%	46	82.6%	45	88.9%
Hispanic	122	85.2%	111	84.7%	131	80.2%	163	88.3%	189	86.8%	225	84.0%
White	767	81.0%	717	82.3%	666	80.8%	678	85.0%	798	85.0%	813	86.5%
International	26	84.6%	34	82.4%	25	88.0%	37	83.8%	44	90.9%	18	100.0%
Unknown	20	75.0%	19	84.2%	58	75.9%	27	92.6%	42	83.3%	47	87.2%
MINORITY	210	80.5%	224	80.8%	243	78.6%	291	83.5%	361	82.5%	388	82.5%



Four-Year Graduation Rates for Full-Time Upper-Division Transfers

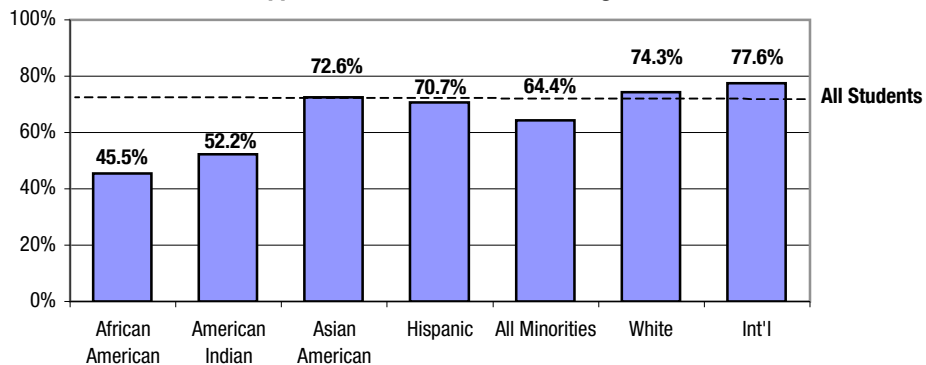
ASU Total University

Upper-division transfers are full-time new transfers entering as juniors or seniors.

	1992		1994		1996		1998		2000		2002	
	No. Entering	% Graduating	No. Entering	% Graduating	No. Entering	% Graduating	No. Entering	% Graduating	No. Entering	% Graduating	No. Entering	% Graduating
TOTAL	1,890	63.2%	2,006	62.9%	1,887	65.6%	1,646	67.4%	1,685	69.9%	2,119	71.8%
African American	38	50.0%	45	53.3%	53	47.2%	48	52.1%	51	68.6%	77	45.5%
American Indian	37	21.6%	60	36.7%	65	40.0%	60	48.3%	55	50.9%	69	52.2%
Asian American	59	55.9%	53	62.3%	78	67.9%	57	64.9%	58	75.9%	62	72.6%
Hispanic	195	59.0%	171	59.6%	232	62.9%	194	64.9%	212	69.3%	283	70.7%
White	1,463	65.8%	1,523	65.1%	1,357	68.1%	1,198	69.2%	1,176	71.3%	1,485	74.3%
International	49	53.1%	60	70.0%	57	77.2%	52	78.8%	55	74.5%	67	77.6%
Unknown	49	63.3%	94	50.0%	45	44.4%	37	59.5%	78	56.4%	76	65.8%
MINORITY	329	53.2%	329	55.0%	428	58.4%	359	60.4%	376	67.6%	491	64.4%

	1992		1994		1996		1998		2000		2002	
	No. Entering	% Graduating	No. Entering	% Graduating	No. Entering	% Graduating	No. Entering	% Graduating	No. Entering	% Graduating	No. Entering	% Graduating
WOMEN	921	67.6%	1,091	66.3%	1,015	67.6%	897	70.6%	957	73.0%	1,229	75.8%
African American	19	42.1%	29	55.2%	33	51.5%	31	61.3%	30	73.3%	42	45.2%
American Indian	25	16.0%	41	39.0%	39	46.2%	42	50.0%	38	60.5%	50	58.0%
Asian American	23	60.9%	27	59.3%	47	74.5%	27	70.4%	33	72.7%	43	79.1%
Hispanic	98	69.9%	103	66.0%	140	66.4%	112	68.8%	135	68.1%	166	75.3%
White	712	70.4%	810	68.8%	704	69.2%	642	72.0%	655	75.4%	861	78.2%
International	20	60.0%	33	66.7%	31	80.6%	24	87.5%	20	80.0%	32	84.4%
Unknown	24	79.2%	48	58.3%	21	52.4%	19	73.7%	46	60.9%	35	71.4%
MINORITY	165	57.0%	200	58.0%	259	62.9%	212	64.2%	236	68.2%	301	68.8%

Fall 2002 Upper-Division Transfers Graduating in 4 Years



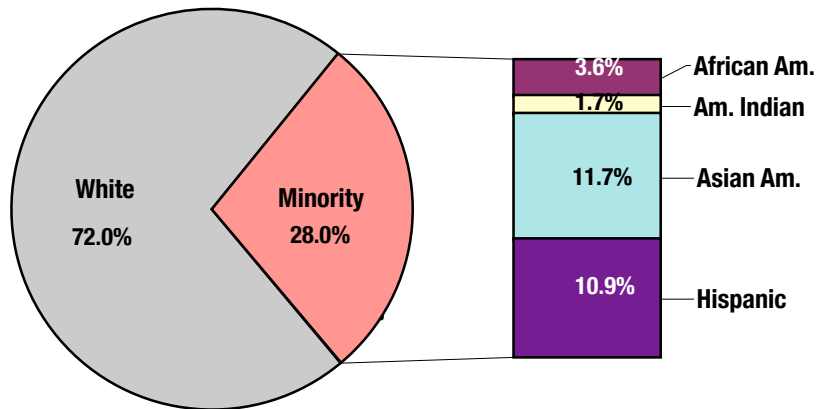
Employees

ASU Total University

	Fall 2001		Fall 2002		Fall 2003		Fall 2004		Fall 2005		Fall 2006	
	Number	Percent	Number	Percent	Number	Percent	Number	Percent	Number	Percent	Number	Percent
TOTAL	10,763	100.0%	10,921	100.0%	11,247	100.0%	11,423	100.0%	11,770	100.0%	12,218	100.0%
African American	345	3.2%	344	3.1%	367	3.3%	376	3.3%	413	3.5%	440	3.6%
American Indian	186	1.7%	193	1.8%	188	1.7%	199	1.7%	213	1.8%	211	1.7%
Asian American	1,031	9.6%	1,122	10.3%	1,228	10.9%	1,199	10.5%	1,263	10.7%	1,427	11.7%
Hispanic	1,103	10.2%	1,122	10.3%	1,171	10.4%	1,229	10.8%	1,289	11.0%	1,337	10.9%
White	8,098	75.2%	8,140	74.5%	8,293	73.7%	8,420	73.7%	8,592	73.0%	8,803	72.0%
MINORITY	2,665	24.8%	2,781	25.5%	2,954	26.3%	3,003	26.3%	3,178	27.0%	3,415	28.0%

	Fall 2001		Fall 2002		Fall 2003		Fall 2004		Fall 2005		Fall 2006	
	Number	Percent	Number	Percent	Number	Percent	Number	Percent	Number	Percent	Number	Percent
WOMEN AS A % OF TOTAL	5,293	49.2%	5,480	50.2%	5,656	50.3%	5,777	50.6%	5,968	50.7%	6,232	51.0%
African American	166	1.5%	185	1.7%	196	1.7%	212	1.9%	218	1.9%	248	2.0%
American Indian	94	0.9%	108	1.0%	96	0.9%	103	0.9%	111	0.9%	111	0.9%
Asian American	385	3.6%	419	3.8%	447	4.0%	467	4.1%	509	4.3%	576	4.7%
Hispanic	576	5.4%	615	5.6%	665	5.9%	681	6.0%	708	6.0%	726	5.9%
White	4,072	37.8%	4,153	38.0%	4,252	37.8%	4,314	37.8%	4,422	37.6%	4,571	37.4%
MINORITY	1,221	11.3%	1,327	12.2%	1,404	12.5%	1,463	12.8%	1,546	13.1%	1,661	13.6%

**Fall 2006
Total Employees**

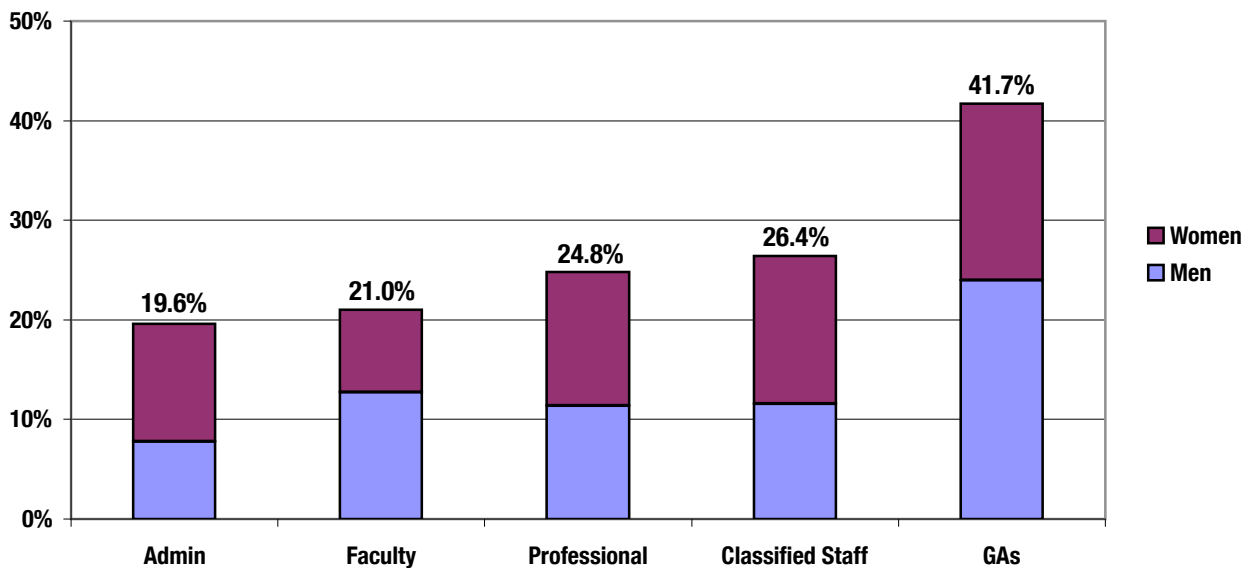


Fall 2006 Employee Categories

ASU Total University

	Administrators		Faculty		Professionals		Classified Staff		GAs		Total	
	Number	Percent	Number	Percent	Number	Percent	Number	Percent	Number	Percent	Number	Percent
TOTAL	102	100.0%	2,862	100.0%	2,166	100.0%	4,580	100.0%	2,508	100.0%	12,218	100.0%
African American	9	8.8%	76	2.7%	95	4.4%	204	4.5%	56	2.2%	440	3.6%
American Indian	0	0.0%	35	1.2%	24	1.1%	126	2.8%	26	1.0%	211	1.7%
Asian American	3	2.9%	280	9.8%	205	9.5%	170	3.7%	769	30.7%	1,427	11.7%
Hispanic	8	7.8%	210	7.3%	214	9.9%	710	15.5%	195	7.8%	1,337	10.9%
White	82	80.4%	2,261	79.0%	1,628	75.2%	3,370	73.6%	1,462	58.3%	8,803	72.0%
MINORITY	20	19.6%	601	21.0%	538	24.8%	1,210	26.4%	1,046	41.7%	3,415	28.0%
WOMEN AS A % OF TOTAL	Administrators		Faculty		Professionals		Classified Staff		GAs		Total	
	Number	Percent	Number	Percent	Number	Percent	Number	Percent	Number	Percent	Number	Percent
	53	52.0%	1,165	40.7%	1,219	56.3%	2,597	56.7%	1,198	47.8%	6,232	51.0%
African American	5	4.9%	42	1.5%	60	2.8%	114	2.5%	27	1.1%	248	2.0%
American Indian	0	0.0%	14	0.5%	12	0.6%	69	1.5%	16	0.6%	111	0.9%
Asian American	2	2.0%	94	3.3%	82	3.8%	105	2.3%	293	11.7%	576	4.7%
Hispanic	5	4.9%	87	3.0%	136	6.3%	390	8.5%	108	4.3%	726	5.9%
White	41	40.2%	928	32.4%	929	42.9%	1,919	41.9%	754	30.1%	4,571	37.4%
MINORITY	12	11.8%	237	8.3%	290	13.4%	678	14.8%	444	17.7%	1,661	13.6%

Minority Percentage by Employee Category

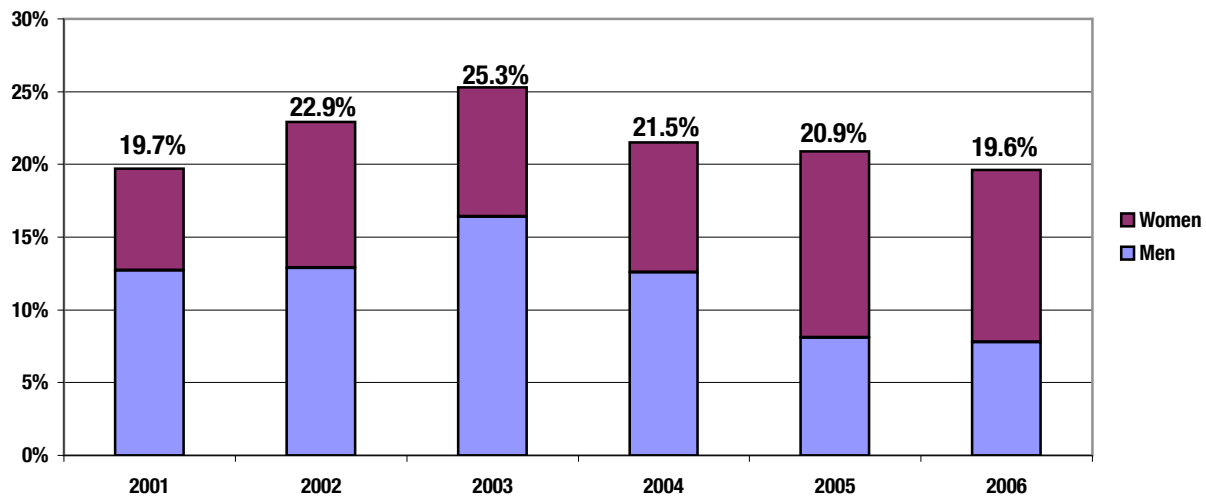


Administrators

ASU Total University

	Fall 2001		Fall 2002		Fall 2003		Fall 2004		Fall 2005		Fall 2006	
	Number	Percent	Number	Percent	Number	Percent	Number	Percent	Number	Percent	Number	Percent
TOTAL	71	100.0%	70	100.0%	79	100.0%	79	100.0%	86	100.0%	102	100.0%
African American	7	9.9%	8	11.4%	9	11.4%	9	11.4%	9	10.5%	9	8.8%
American Indian	0	0.0%	0	0.0%	1	1.3%	0	0.0%	0	0.0%	0	0.0%
Asian American	1	1.4%	2	2.9%	2	2.5%	1	1.3%	2	2.3%	3	2.9%
Hispanic	6	8.5%	6	8.6%	8	10.1%	7	8.9%	7	8.1%	8	7.8%
White	57	80.3%	54	77.1%	59	74.7%	62	78.5%	68	79.1%	82	80.4%
MINORITY	14	19.7%	16	22.9%	20	25.3%	17	21.5%	18	20.9%	20	19.6%
WOMEN AS A % OF TOTAL	Fall 2001		Fall 2002		Fall 2003		Fall 2004		Fall 2005		Fall 2006	
	Number	Percent	Number	Percent	Number	Percent	Number	Percent	Number	Percent	Number	Percent
	36	50.7%	37	52.9%	39	49.4%	39	49.4%	51	59.3%	53	52.0%
African American	2	2.8%	3	4.3%	3	3.8%	4	5.1%	5	5.8%	5	4.9%
American Indian	0	0.0%	0	0.0%	0	0.0%	0	0.0%	0	0.0%	0	0.0%
Asian American	1	1.4%	2	2.9%	2	2.5%	1	1.3%	2	2.3%	2	2.0%
Hispanic	2	2.8%	2	2.9%	2	2.5%	2	2.5%	4	4.7%	5	4.9%
White	31	43.7%	30	42.9%	32	40.5%	32	40.5%	40	46.5%	41	40.2%
MINORITY	5	7.0%	7	10.0%	7	8.9%	7	8.9%	11	12.8%	12	11.8%

Minority Percentage of Administrators

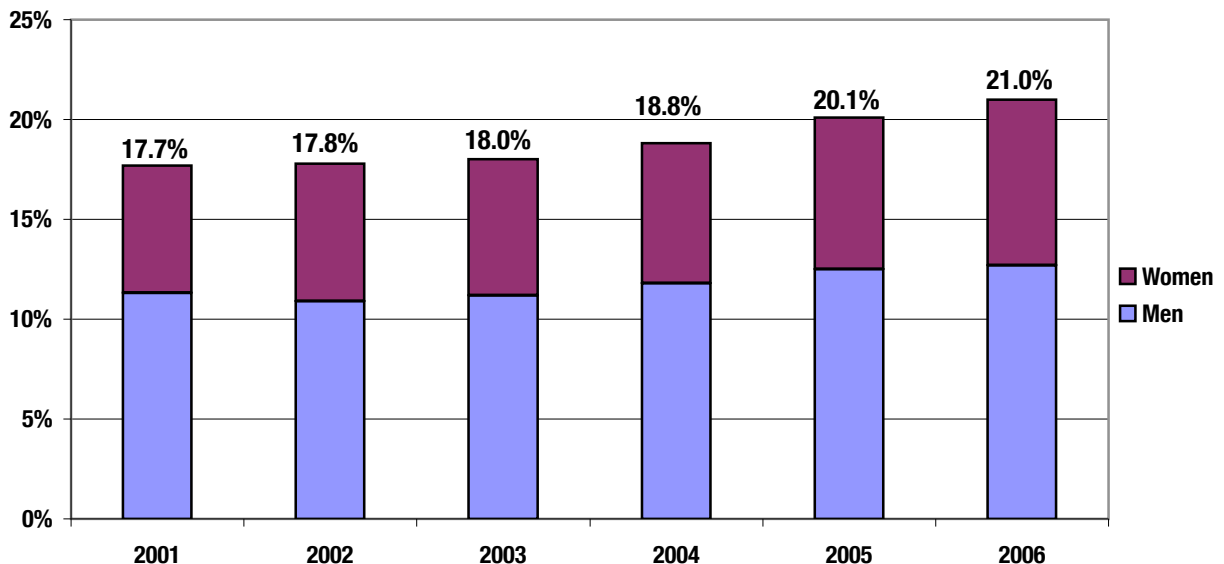


Faculty

ASU Total University

	Fall 2001		Fall 2002		Fall 2003		Fall 2004		Fall 2005		Fall 2006	
	Number	Percent	Number	Percent	Number	Percent	Number	Percent	Number	Percent	Number	Percent
TOTAL	2,389	100.0%	2,449	100.0%	2,484	100.0%	2,585	100.0%	2,734	100.0%	2,862	100.0%
African American	61	2.6%	59	2.4%	60	2.4%	63	2.4%	65	2.4%	76	2.7%
American Indian	21	0.9%	21	0.9%	28	1.1%	34	1.3%	38	1.4%	35	1.2%
Asian American	186	7.8%	193	7.9%	196	7.9%	217	8.4%	248	9.1%	280	9.8%
Hispanic	156	6.5%	163	6.7%	164	6.6%	173	6.7%	198	7.2%	210	7.3%
White	1,965	82.3%	2,013	82.2%	2,036	82.0%	2,098	81.2%	2,185	79.9%	2,261	79.0%
MINORITY	424	17.7%	436	17.8%	448	18.0%	487	18.8%	549	20.1%	601	21.0%
WOMEN AS A % OF TOTAL	Fall 2001		Fall 2002		Fall 2003		Fall 2004		Fall 2005		Fall 2006	
	Number	Percent	Number	Percent	Number	Percent	Number	Percent	Number	Percent	Number	Percent
	903	37.8%	962	39.3%	981	39.5%	1,025	39.7%	1,091	39.9%	1,165	40.7%
African American	26	1.1%	29	1.2%	28	1.1%	31	1.2%	31	1.1%	42	1.5%
American Indian	10	0.4%	11	0.4%	12	0.5%	14	0.5%	15	0.5%	14	0.5%
Asian American	47	2.0%	54	2.2%	59	2.4%	68	2.6%	80	2.9%	94	3.3%
Hispanic	70	2.9%	75	3.1%	71	2.9%	67	2.6%	81	3.0%	87	3.0%
White	750	31.4%	793	32.4%	811	32.6%	845	32.7%	884	32.3%	928	32.4%
MINORITY	153	6.4%	169	6.9%	170	6.8%	180	7.0%	207	7.6%	237	8.3%

Minority Percentage of Faculty

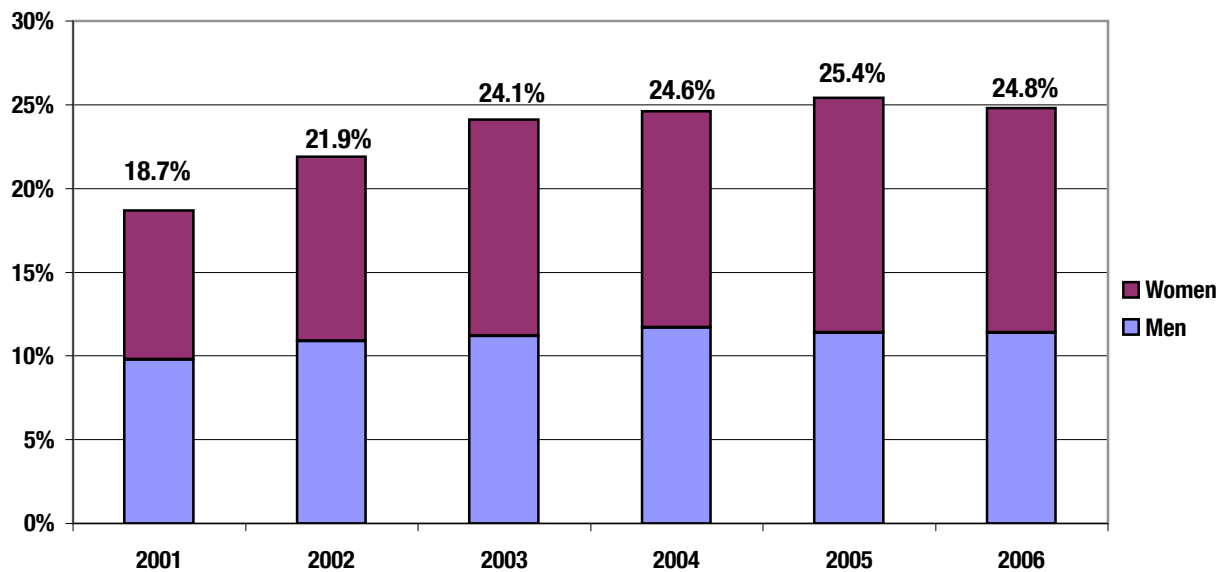


Professionals

ASU Total University

	Fall 2001		Fall 2002		Fall 2003		Fall 2004		Fall 2005		Fall 2006	
	Number	Percent	Number	Percent	Number	Percent	Number	Percent	Number	Percent	Number	Percent
TOTAL	1,254	100.0%	1,350	100.0%	1,535	100.0%	1,661	100.0%	1,897	100.0%	2,166	100.0%
African American	45	3.6%	58	4.3%	65	4.2%	68	4.1%	76	4.0%	95	4.4%
American Indian	18	1.4%	23	1.7%	21	1.4%	19	1.1%	20	1.1%	24	1.1%
Asian American	86	6.9%	108	8.0%	134	8.7%	147	8.9%	185	9.8%	205	9.5%
Hispanic	85	6.8%	107	7.9%	150	9.8%	174	10.5%	201	10.6%	214	9.9%
White	1,020	81.3%	1,054	78.1%	1,165	75.9%	1,253	75.4%	1,415	74.6%	1,628	75.2%
MINORITY	234	18.7%	296	21.9%	370	24.1%	408	24.6%	482	25.4%	538	24.8%
WOMEN AS A % OF TOTAL	Fall 2001		Fall 2002		Fall 2003		Fall 2004		Fall 2005		Fall 2006	
	Number	Percent	Number	Percent	Number	Percent	Number	Percent	Number	Percent	Number	Percent
	675	53.8%	729	54.0%	839	54.7%	891	53.6%	1,057	55.7%	1,219	56.3%
African American	18	1.4%	28	2.1%	32	2.1%	35	2.1%	41	2.2%	60	2.8%
American Indian	9	0.7%	13	1.0%	12	0.8%	10	0.6%	11	0.6%	12	0.6%
Asian American	34	2.7%	40	3.0%	45	2.9%	47	2.8%	75	4.0%	82	3.8%
Hispanic	51	4.1%	67	5.0%	109	7.1%	122	7.3%	138	7.3%	136	6.3%
White	563	44.9%	581	43.0%	641	41.8%	677	40.8%	792	41.8%	929	42.9%
MINORITY	112	8.9%	148	11.0%	198	12.9%	214	12.9%	265	14.0%	290	13.4%

Minority Percentage of Professionals

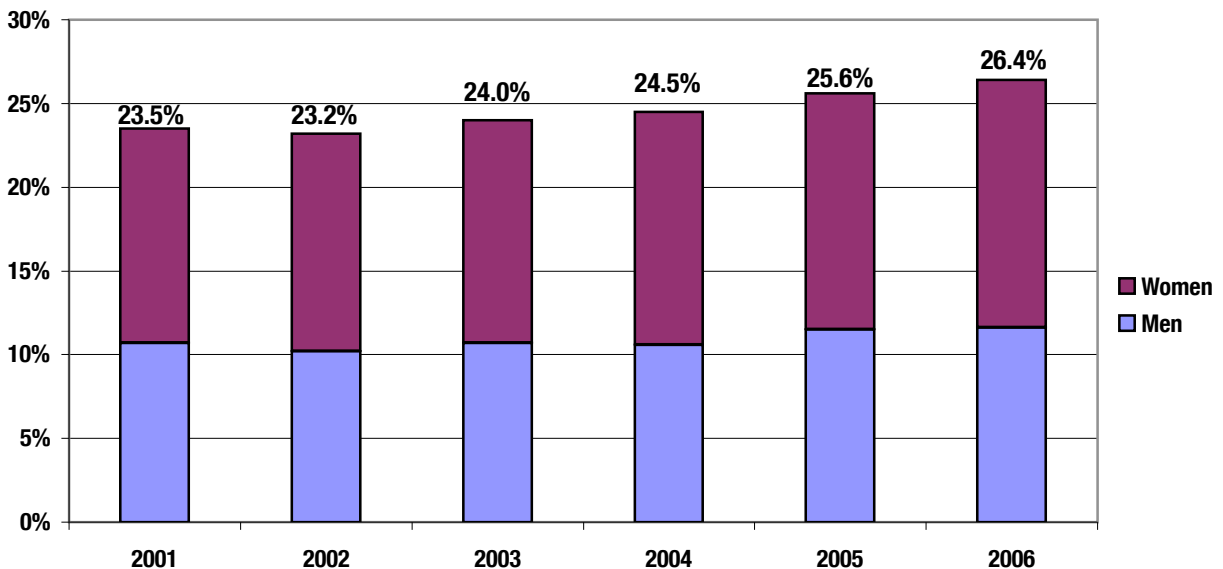


Classified Staff

ASU Total University

	Fall 2001		Fall 2002		Fall 2003		Fall 2004		Fall 2005		Fall 2006	
	Number	Percent	Number	Percent	Number	Percent	Number	Percent	Number	Percent	Number	Percent
TOTAL	4,830	100.0%	4,725	100.0%	4,826	100.0%	4,792	100.0%	4,764	100.0%	4,580	100.0%
African American	182	3.8%	175	3.7%	191	4.0%	193	4.0%	210	4.4%	204	4.5%
American Indian	118	2.4%	109	2.3%	111	2.3%	119	2.5%	130	2.7%	126	2.8%
Asian American	161	3.3%	152	3.2%	177	3.7%	168	3.5%	178	3.7%	170	3.7%
Hispanic	672	13.9%	661	14.0%	678	14.0%	692	14.4%	702	14.7%	710	15.5%
White	3,697	76.5%	3,628	76.8%	3,669	76.0%	3,620	75.5%	3,544	74.4%	3,370	73.6%
MINORITY	1,133	23.5%	1,097	23.2%	1,157	24.0%	1,172	24.5%	1,220	25.6%	1,210	26.4%
WOMEN AS A % OF TOTAL	Fall 2001		Fall 2002		Fall 2003		Fall 2004		Fall 2005		Fall 2006	
	Number	Percent	Number	Percent	Number	Percent	Number	Percent	Number	Percent	Number	Percent
	2,694	55.8%	2,673	56.6%	2,723	56.4%	2,727	56.9%	2,668	56.0%	2,597	56.7%
African American	96	2.0%	96	2.0%	106	2.2%	113	2.4%	115	2.4%	114	2.5%
American Indian	57	1.2%	60	1.3%	59	1.2%	64	1.3%	70	1.5%	69	1.5%
Asian American	102	2.1%	93	2.0%	100	2.1%	100	2.1%	104	2.2%	105	2.3%
Hispanic	364	7.5%	363	7.7%	376	7.8%	387	8.1%	381	8.0%	390	8.5%
White	2,075	43.0%	2,061	43.6%	2,082	43.1%	2,063	43.1%	1,998	41.9%	1,919	41.9%
MINORITY	619	12.8%	612	13.0%	641	13.3%	664	13.9%	670	14.1%	678	14.8%

Minority Percentage of Classified Staff

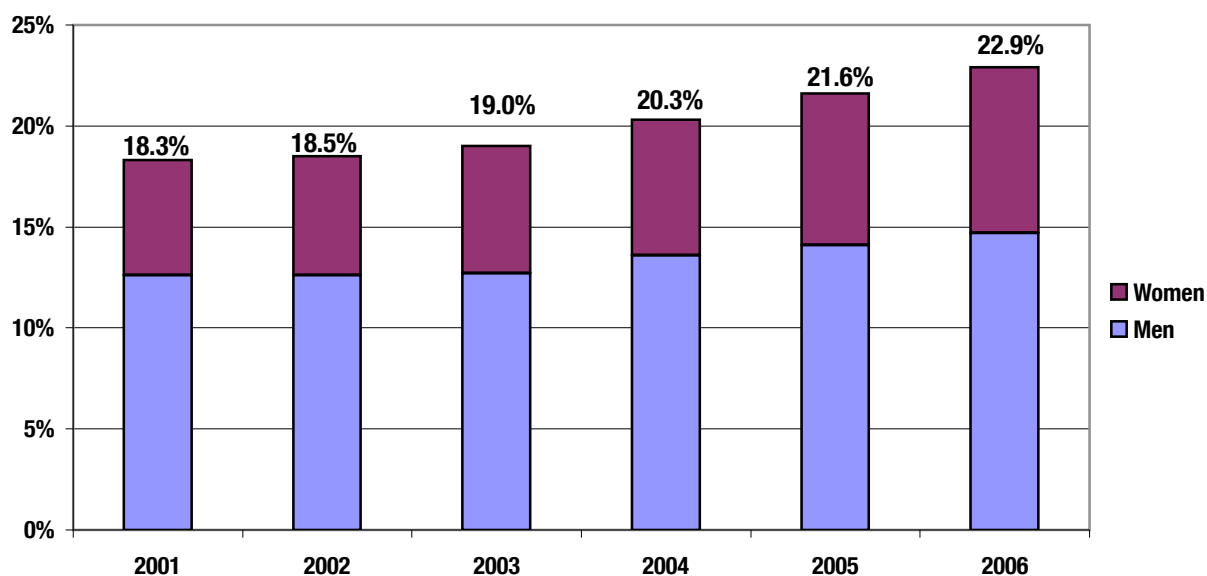


Tenured/Tenure-track Faculty

ASU Total University

	Fall 2001		Fall 2002		Fall 2003		Fall 2004		Fall 2005		Fall 2006	
	Number	Percent	Number	Percent	Number	Percent	Number	Percent	Number	Percent	Number	Percent
TOTAL	1,657	100.0%	1,671	100.0%	1,665	100.0%	1,678	100.0%	1,758	100.0%	1,808	100.0%
African American	43	2.6%	45	2.7%	47	2.8%	48	2.9%	49	2.8%	54	3.0%
American Indian	17	1.0%	16	1.0%	18	1.1%	26	1.5%	27	1.5%	27	1.5%
Asian American	130	7.8%	132	7.9%	133	8.0%	143	8.5%	166	9.4%	189	10.5%
Hispanic	114	6.9%	116	6.9%	118	7.1%	124	7.4%	137	7.8%	144	8.0%
White	1,353	81.7%	1,362	81.5%	1,349	81.0%	1,337	79.7%	1,379	78.4%	1,394	77.1%
MINORITY	304	18.3%	309	18.5%	316	19.0%	341	20.3%	379	21.6%	414	22.9%
WOMEN AS A % OF TOTAL	Fall 2001		Fall 2002		Fall 2003		Fall 2004		Fall 2005		Fall 2006	
	Number	Percent	Number	Percent	Number	Percent	Number	Percent	Number	Percent	Number	Percent
WOMEN AS A % OF TOTAL	508	30.7%	529	31.7%	533	32.0%	541	32.2%	588	33.4%	608	33.6%
African American	18	1.1%	18	1.1%	20	1.2%	23	1.4%	24	1.4%	27	1.5%
American Indian	9	0.5%	9	0.5%	9	0.5%	10	0.6%	11	0.6%	11	0.6%
Asian American	24	1.4%	27	1.6%	31	1.9%	36	2.1%	44	2.5%	52	2.9%
Hispanic	43	2.6%	44	2.6%	45	2.7%	43	2.6%	52	3.0%	58	3.2%
White	414	25.0%	431	25.8%	428	25.7%	429	25.6%	457	26.0%	460	25.4%
MINORITY	94	5.7%	98	5.9%	105	6.3%	112	6.7%	131	7.5%	148	8.2%

Minority Percentage of Tenured/Tenure-track Faculty

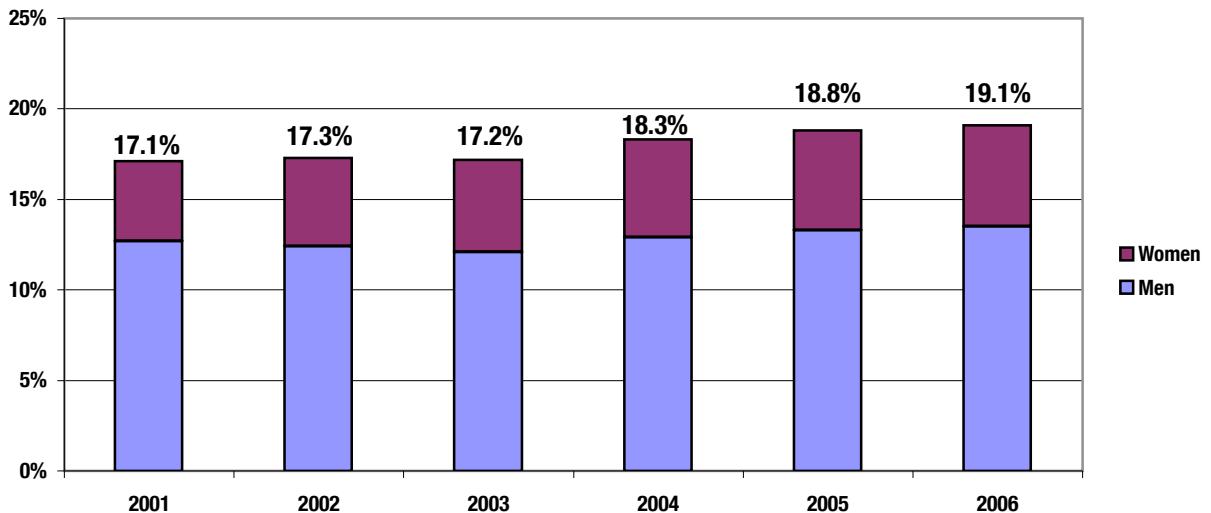


Tenured Faculty

ASU Total University

	Fall 2001		Fall 2002		Fall 2003		Fall 2004		Fall 2005		Fall 2006	
	Number	Percent	Number	Percent	Number	Percent	Number	Percent	Number	Percent	Number	Percent
TOTAL	1,307	100.0%	1,316	100.0%	1,300	100.0%	1,271	100.0%	1,279	100.0%	1,307	100.0%
African American	29	2.2%	32	2.4%	34	2.6%	33	2.6%	33	2.6%	36	2.8%
American Indian	12	0.9%	11	0.8%	11	0.8%	13	1.0%	13	1.0%	15	1.1%
Asian American	91	7.0%	95	7.2%	94	7.2%	96	7.6%	102	8.0%	106	8.1%
Hispanic	91	7.0%	90	6.8%	85	6.5%	90	7.1%	92	7.2%	93	7.1%
White	1,084	82.9%	1,088	82.7%	1,076	82.8%	1,039	81.7%	1,039	81.2%	1,057	80.9%
MINORITY	223	17.1%	228	17.3%	224	17.2%	232	18.3%	240	18.8%	250	19.1%
WOMEN AS A % OF TOTAL	Fall 2001		Fall 2002		Fall 2003		Fall 2004		Fall 2005		Fall 2006	
	Number	Percent	Number	Percent	Number	Percent	Number	Percent	Number	Percent	Number	Percent
	342	26.2%	359	27.3%	360	27.7%	357	28.1%	368	28.8%	382	29.2%
African American	11	0.8%	13	1.0%	14	1.1%	13	1.0%	13	1.0%	14	1.1%
American Indian	4	0.3%	4	0.3%	4	0.3%	4	0.3%	4	0.3%	5	0.4%
Asian American	11	0.8%	15	1.1%	18	1.4%	20	1.6%	21	1.6%	20	1.5%
Hispanic	32	2.4%	32	2.4%	30	2.3%	31	2.4%	32	2.5%	34	2.6%
White	284	21.7%	295	22.4%	294	22.6%	289	22.7%	298	23.3%	309	23.6%
MINORITY	58	4.4%	64	4.9%	66	5.1%	68	5.4%	70	5.5%	73	5.6%

Minority Percentage of Tenured Faculty

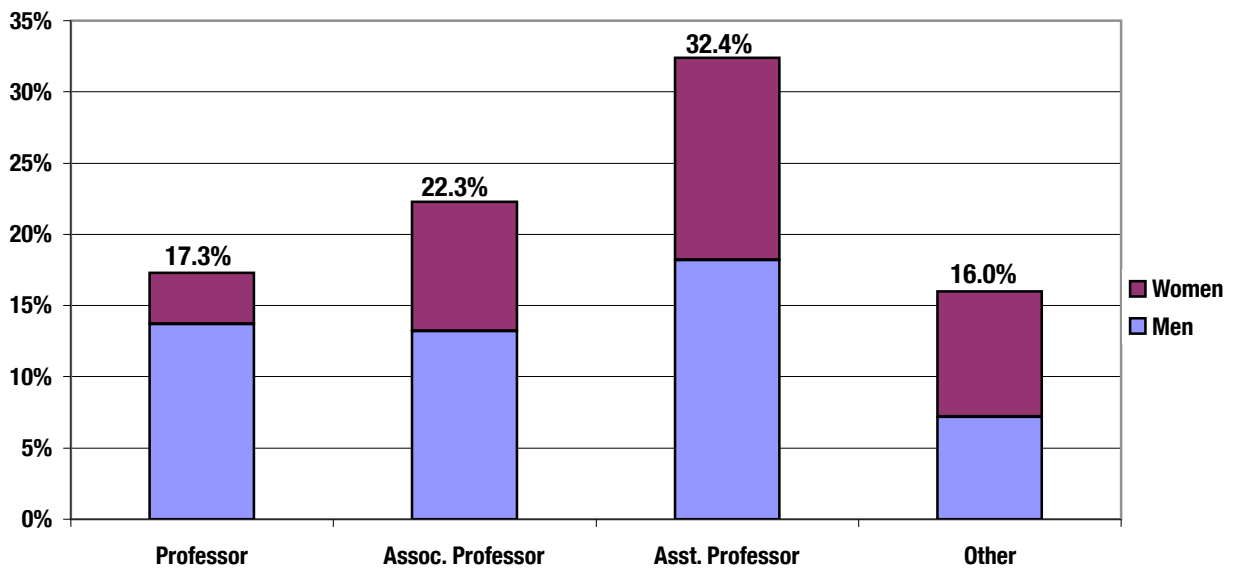


Fall 2006 Faculty Rank

ASU Total University

	Professor		Associate		Assistant		Other		Total	
	Number	Percent	Number	Percent	Number	Percent	Number	Percent	Number	Percent
TOTAL	909	100.0%	618	100.0%	564	100.0%	771	100.0%	2,862	100.0%
African American	20	2.2%	21	3.4%	23	4.1%	12	1.6%	76	2.7%
American Indian	13	1.4%	5	0.8%	12	2.1%	5	0.6%	35	1.2%
Asian American	65	7.2%	62	10.0%	92	16.3%	61	7.9%	280	9.8%
Hispanic	59	6.5%	50	8.1%	56	9.9%	45	5.8%	210	7.3%
White	752	82.7%	480	77.7%	381	67.6%	648	84.0%	2,261	79.0%
MINORITY	157	17.3%	138	22.3%	183	32.4%	123	16.0%	601	21.0%
WOMEN AS A % OF TOTAL	Professor		Associate		Assistant		Other		Total	
	Number	Percent	Number	Percent	Number	Percent	Number	Percent	Number	Percent
	200	22.0%	270	43.7%	254	45.0%	441	57.2%	1,165	40.7%
African American	7	0.8%	11	1.8%	16	2.8%	8	1.0%	42	1.5%
American Indian	2	0.2%	3	0.5%	6	1.1%	3	0.4%	14	0.5%
Asian American	8	0.9%	20	3.2%	32	5.7%	34	4.4%	94	3.3%
Hispanic	16	1.8%	22	3.6%	26	4.6%	23	3.0%	87	3.0%
White	167	18.4%	214	34.6%	174	30.9%	373	48.4%	928	32.4%
MINORITY	33	3.6%	56	9.1%	80	14.2%	68	8.8%	237	8.3%

Minority Percentage by Faculty Rank



New Tenured/Tenure-track Faculty Hires

ASU Total University

	1996-97		1998-99		2000-01		2002-03		2004-05		2006-07	
	Number	Percent	Number	Percent	Number	Percent	Number	Percent	Number	Percent	Number	Percent
TOTAL	81	100.0%	99	100.0%	95	100.0%	90	100.0%	166	100.0%	150	100.0%
African American	5	6.2%	4	4.0%	3	3.2%	2	2.2%	6	3.6%	9	6.0%
American Indian	2	2.5%	1	1.0%	1	1.1%	0	0.0%	10	6.0%	0	0.0%
Asian American	11	13.6%	15	15.2%	11	11.6%	6	6.7%	19	11.4%	30	20.0%
Hispanic	7	8.6%	9	9.1%	4	4.2%	7	7.8%	19	11.4%	16	10.7%
White	56	69.1%	70	70.7%	76	80.0%	75	83.3%	112	67.5%	95	63.3%
MINORITY	25	30.9%	29	29.3%	19	20.0%	15	16.7%	54	32.5%	55	36.7%
WOMEN AS A % OF TOTAL	1996-97		1998-99		2000-01		2002-03		2004-05		2006-07	
	Number	Percent	Number	Percent	Number	Percent	Number	Percent	Number	Percent	Number	Percent
WOMEN AS A % OF TOTAL	36	44.4%	44	44.4%	29	30.5%	40	44.4%	61	36.7%	58	38.7%
African American	1	1.2%	2	2.0%	2	2.1%	1	1.1%	5	3.0%	6	4.0%
American Indian	2	2.5%	0	0.0%	0	0.0%	0	0.0%	3	1.8%	0	0.0%
Asian American	5	6.2%	4	4.0%	0	0.0%	2	2.2%	7	4.2%	9	6.0%
Hispanic	4	4.9%	4	4.0%	1	1.1%	3	3.3%	6	3.6%	8	5.3%
White	24	29.6%	34	34.3%	26	27.4%	34	37.8%	40	24.1%	35	23.3%
MINORITY	12	14.8%	10	10.1%	3	3.2%	6	6.7%	21	12.7%	23	15.3%

Minority Percentage of New Tenured/Tenure-track Faculty Hires

