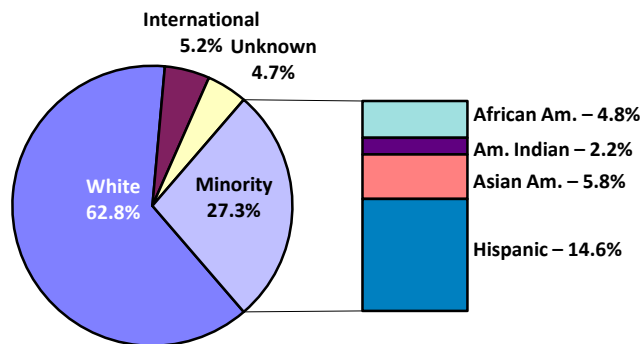


Total Enrollment ASU Total University

| | Fall 1999 | | Fall 2001 | | Fall 2003 | | Fall 2005 | | Fall 2007 | | Fall 2009 | |
|------------------|---------------|---------------|---------------|---------------|---------------|---------------|---------------|---------------|---------------|---------------|---------------|---------------|
| | Number | Percent | Number | Percent | Number | Percent | Number | Percent | Number | Percent | Number | Percent |
| TOTAL | 49,700 | 100.0% | 52,759 | 100.0% | 57,543 | 100.0% | 61,033 | 100.0% | 64,394 | 100.0% | 68,064 | 100.0% |
| African American | 1,445 | 2.9% | 1,597 | 3.0% | 2,005 | 3.5% | 2,211 | 3.6% | 2,489 | 3.9% | 3,257 | 4.8% |
| American Indian | 977 | 2.0% | 1,086 | 2.1% | 1,276 | 2.2% | 1,453 | 2.4% | 1,370 | 2.1% | 1,484 | 2.2% |
| Asian American | 2,164 | 4.4% | 2,426 | 4.6% | 2,757 | 4.8% | 2,944 | 4.8% | 3,259 | 5.1% | 3,935 | 5.8% |
| Hispanic | 5,008 | 10.1% | 5,480 | 10.4% | 6,649 | 11.6% | 7,325 | 12.0% | 8,323 | 12.9% | 9,924 | 14.6% |
| White | 35,203 | 70.8% | 36,697 | 69.6% | 39,109 | 68.0% | 39,537 | 64.8% | 40,709 | 63.2% | 42,728 | 62.8% |
| International | 2,959 | 6.0% | 3,611 | 6.8% | 3,292 | 5.7% | 3,055 | 5.0% | 3,481 | 5.4% | 3,549 | 5.2% |
| Unknown | 1,944 | 3.9% | 1,862 | 3.5% | 2,455 | 4.3% | 4,508 | 7.4% | 4,763 | 7.4% | 3,187 | 4.7% |
| MINORITY | 9,594 | 19.3% | 10,589 | 20.1% | 12,687 | 22.0% | 13,933 | 22.8% | 15,441 | 24.0% | 18,600 | 27.3% |

| WOMEN AS A % OF TOTAL | Fall 1999 | | Fall 2001 | | Fall 2003 | | Fall 2005 | | Fall 2007 | | Fall 2009 | |
|------------------------------|---------------|--------------|---------------|--------------|---------------|--------------|---------------|--------------|---------------|--------------|---------------|--------------|
| | Number | Percent | Number | Percent | Number | Percent | Number | Percent | Number | Percent | Number | Percent |
| WOMEN AS A % OF TOTAL | 26,530 | 53.4% | 28,136 | 53.3% | 30,666 | 53.3% | 32,298 | 52.9% | 33,538 | 52.1% | 35,059 | 51.5% |
| African American | 816 | 1.6% | 918 | 1.7% | 1,183 | 2.1% | 1,269 | 2.1% | 1,347 | 2.1% | 1,777 | 2.6% |
| American Indian | 641 | 1.3% | 722 | 1.4% | 828 | 1.4% | 956 | 1.6% | 860 | 1.3% | 927 | 1.4% |
| Asian American | 1,078 | 2.2% | 1,244 | 2.4% | 1,413 | 2.5% | 1,519 | 2.5% | 1,677 | 2.6% | 2,000 | 2.9% |
| Hispanic | 2,901 | 5.8% | 3,213 | 6.1% | 3,938 | 6.8% | 4,299 | 7.0% | 4,794 | 7.4% | 5,611 | 8.2% |
| White | 19,011 | 38.3% | 19,897 | 37.7% | 20,881 | 36.3% | 20,818 | 34.1% | 21,153 | 32.8% | 21,931 | 32.2% |
| International | 1,071 | 2.2% | 1,213 | 2.3% | 1,161 | 2.0% | 1,134 | 1.9% | 1,240 | 1.9% | 1,233 | 1.8% |
| Unknown | 1,012 | 2.0% | 929 | 1.8% | 1,262 | 2.2% | 2,303 | 3.8% | 2,467 | 3.8% | 1,580 | 2.3% |
| MINORITY | 5,436 | 10.9% | 6,097 | 11.6% | 7,362 | 12.8% | 8,043 | 13.2% | 8,678 | 13.5% | 10,315 | 15.2% |

Fall 2009 Total Enrollment



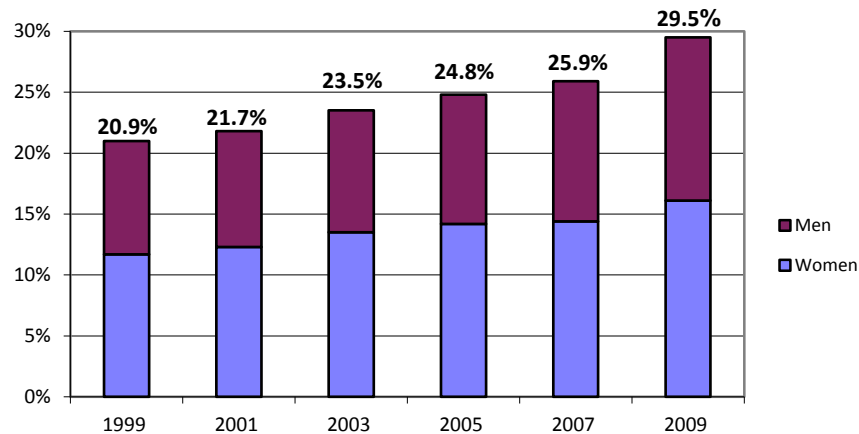
Undergraduate Enrollment

ASU Total University

| | Fall 1999 | | Fall 2001 | | Fall 2003 | | Fall 2005 | | Fall 2007 | | Fall 2009 | |
|------------------|---------------|---------------|---------------|---------------|---------------|---------------|---------------|---------------|---------------|---------------|---------------|---------------|
| | Number | Percent | Number | Percent | Number | Percent | Number | Percent | Number | Percent | Number | Percent |
| TOTAL | 37,988 | 100.0% | 40,281 | 100.0% | 45,430 | 100.0% | 48,955 | 100.0% | 51,311 | 100.0% | 54,277 | 100.0% |
| African American | 1,188 | 3.1% | 1,303 | 3.2% | 1,661 | 3.7% | 1,893 | 3.9% | 2,105 | 4.1% | 2,767 | 5.1% |
| American Indian | 818 | 2.2% | 886 | 2.2% | 1,038 | 2.3% | 1,271 | 2.6% | 1,137 | 2.2% | 1,211 | 2.2% |
| Asian American | 1,757 | 4.6% | 2,005 | 5.0% | 2,270 | 5.0% | 2,516 | 5.1% | 2,749 | 5.4% | 3,295 | 6.1% |
| Hispanic | 4,172 | 11.0% | 4,567 | 11.3% | 5,723 | 12.6% | 6,464 | 13.2% | 7,311 | 14.2% | 8,734 | 16.1% |
| White | 27,270 | 71.8% | 28,703 | 71.3% | 31,852 | 70.1% | 33,536 | 68.5% | 34,209 | 66.7% | 34,589 | 63.7% |
| International | 1,291 | 3.4% | 1,365 | 3.4% | 1,265 | 2.8% | 1,162 | 2.4% | 1,198 | 2.3% | 1,328 | 2.4% |
| Unknown | 1,492 | 3.9% | 1,452 | 3.6% | 1,621 | 3.6% | 2,113 | 4.3% | 2,602 | 5.1% | 2,353 | 4.3% |
| MINORITY | 7,935 | 20.9% | 8,761 | 21.7% | 10,692 | 23.5% | 12,144 | 24.8% | 13,302 | 25.9% | 16,007 | 29.5% |

| WOMEN AS A % OF TOTAL | Fall 1999 | | Fall 2001 | | Fall 2003 | | Fall 2005 | | Fall 2007 | | Fall 2009 | |
|------------------------------|---------------|--------------|---------------|--------------|---------------|--------------|---------------|--------------|---------------|--------------|---------------|--------------|
| | Number | Percent | Number | Percent | Number | Percent | Number | Percent | Number | Percent | Number | Percent |
| WOMEN AS A % OF TOTAL | 20,351 | 53.6% | 21,524 | 53.4% | 24,188 | 53.2% | 25,948 | 53.0% | 26,692 | 52.0% | 27,806 | 51.2% |
| African American | 652 | 1.7% | 731 | 1.8% | 958 | 2.1% | 1,066 | 2.2% | 1,117 | 2.2% | 1,482 | 2.7% |
| American Indian | 534 | 1.4% | 582 | 1.4% | 666 | 1.5% | 836 | 1.7% | 706 | 1.4% | 743 | 1.4% |
| Asian American | 875 | 2.3% | 1,017 | 2.5% | 1,144 | 2.5% | 1,285 | 2.6% | 1,388 | 2.7% | 1,616 | 3.0% |
| Hispanic | 2,396 | 6.3% | 2,633 | 6.5% | 3,344 | 7.4% | 3,762 | 7.7% | 4,154 | 8.1% | 4,890 | 9.0% |
| White | 14,622 | 38.5% | 15,335 | 38.1% | 16,779 | 36.9% | 17,517 | 35.8% | 17,601 | 34.3% | 17,462 | 32.2% |
| International | 496 | 1.3% | 490 | 1.2% | 488 | 1.1% | 456 | 0.9% | 442 | 0.9% | 442 | 0.8% |
| Unknown | 776 | 2.0% | 736 | 1.8% | 809 | 1.8% | 1,026 | 2.1% | 1,284 | 2.5% | 1,171 | 2.2% |
| MINORITY | 4,457 | 11.7% | 4,963 | 12.3% | 6,112 | 13.5% | 6,949 | 14.2% | 7,365 | 14.4% | 8,731 | 16.1% |

Minority Percentage of Undergraduate Enrollment

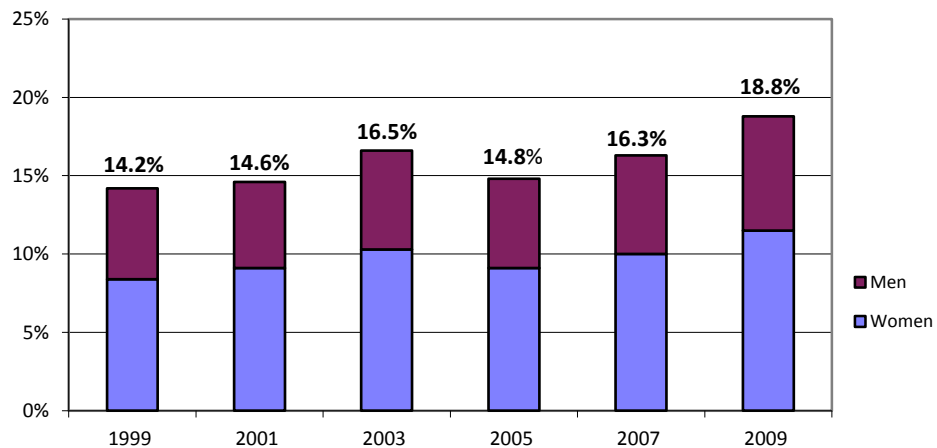


Graduate Enrollment ASU Total University

| | Fall 1999 | | Fall 2001 | | Fall 2003 | | Fall 2005 | | Fall 2007 | | Fall 2009 | |
|------------------|---------------|---------------|---------------|---------------|---------------|---------------|---------------|---------------|---------------|---------------|---------------|---------------|
| | Number | Percent | Number | Percent | Number | Percent | Number | Percent | Number | Percent | Number | Percent |
| TOTAL | 11,712 | 100.0% | 12,478 | 100.0% | 12,113 | 100.0% | 12,078 | 100.0% | 13,083 | 100.0% | 13,787 | 100.0% |
| African American | 257 | 2.2% | 294 | 2.4% | 344 | 2.8% | 318 | 2.6% | 384 | 2.9% | 490 | 3.6% |
| American Indian | 159 | 1.4% | 200 | 1.6% | 238 | 2.0% | 182 | 1.5% | 233 | 1.8% | 273 | 2.0% |
| Asian American | 407 | 3.5% | 421 | 3.4% | 487 | 4.0% | 428 | 3.5% | 510 | 3.9% | 640 | 4.6% |
| Hispanic | 836 | 7.1% | 913 | 7.3% | 926 | 7.6% | 861 | 7.1% | 1,012 | 7.7% | 1,190 | 8.6% |
| White | 7,933 | 67.7% | 7,994 | 64.1% | 7,257 | 59.9% | 6,001 | 49.7% | 6,500 | 49.7% | 8,139 | 59.0% |
| International | 1,668 | 14.2% | 2,246 | 18.0% | 2,027 | 16.7% | 1,893 | 15.7% | 2,283 | 17.5% | 2,221 | 16.1% |
| Unknown | 452 | 3.9% | 410 | 3.3% | 834 | 6.9% | 2,395 | 19.8% | 2,161 | 16.5% | 834 | 6.0% |
| MINORITY | 1,659 | 14.2% | 1,828 | 14.6% | 1,995 | 16.5% | 1,789 | 14.8% | 2,139 | 16.3% | 2,593 | 18.8% |

| WOMEN AS A % OF TOTAL | Fall 1999 | | Fall 2001 | | Fall 2003 | | Fall 2005 | | Fall 2007 | | Fall 2009 | |
|--------------------------|--------------|--------------|--------------|--------------|--------------|--------------|--------------|--------------|--------------|--------------|--------------|--------------|
| | Number | Percent | Number | Percent | Number | Percent | Number | Percent | Number | Percent | Number | Percent |
| | 6,179 | 52.8% | 6,612 | 53.0% | 6,478 | 53.5% | 6,350 | 52.6% | 6,846 | 52.3% | 7,253 | 52.6% |
| African American | 164 | 1.4% | 187 | 1.5% | 225 | 1.9% | 203 | 1.7% | 230 | 1.8% | 295 | 2.1% |
| American Indian | 107 | 0.9% | 140 | 1.1% | 162 | 1.3% | 120 | 1.0% | 154 | 1.2% | 184 | 1.3% |
| Asian American | 203 | 1.7% | 227 | 1.8% | 269 | 2.2% | 234 | 1.9% | 289 | 2.2% | 384 | 2.8% |
| Hispanic | 505 | 4.3% | 580 | 4.6% | 594 | 4.9% | 537 | 4.4% | 640 | 4.9% | 721 | 5.2% |
| White | 4,389 | 37.5% | 4,562 | 36.6% | 4,102 | 33.9% | 3,301 | 27.3% | 3,552 | 27.1% | 4,469 | 32.4% |
| International | 575 | 4.9% | 723 | 5.8% | 673 | 5.6% | 678 | 5.6% | 798 | 6.1% | 791 | 5.7% |
| Unknown | 236 | 2.0% | 193 | 1.5% | 453 | 3.7% | 1,277 | 10.6% | 1,183 | 9.0% | 409 | 3.0% |
| MINORITY | 979 | 8.4% | 1,134 | 9.1% | 1,250 | 10.3% | 1,094 | 9.1% | 1,313 | 10.0% | 1,584 | 11.5% |

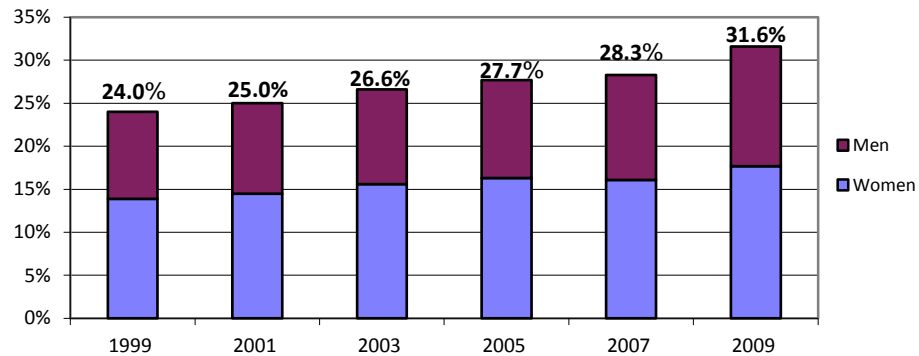
Minority Percentage of Graduate Enrollment



Resident Undergraduate Enrollment ASU Total University

| | Fall 1999 | | Fall 2001 | | Fall 2003 | | Fall 2005 | | Fall 2007 | | Fall 2009 | |
|----------------------------------|---------------|---------------|---------------|---------------|---------------|---------------|---------------|---------------|---------------|---------------|---------------|---------------|
| | Number | Percent | Number | Percent | Number | Percent | Number | Percent | Number | Percent | Number | Percent |
| TOTAL | 28,887 | 100.0% | 30,619 | 100.0% | 34,854 | 100.0% | 37,364 | 100.0% | 38,446 | 100.0% | 42,170 | 100.0% |
| African American | 956 | 3.3% | 1,040 | 3.4% | 1,309 | 3.8% | 1,429 | 3.8% | 1,502 | 3.9% | 2,020 | 4.8% |
| American Indian | 757 | 2.6% | 832 | 2.7% | 968 | 2.8% | 1,195 | 3.2% | 1,052 | 2.7% | 1,121 | 2.7% |
| Asian American | 1,496 | 5.2% | 1,686 | 5.5% | 1,900 | 5.5% | 2,043 | 5.5% | 2,229 | 5.8% | 2,741 | 6.5% |
| Hispanic | 3,735 | 12.9% | 4,097 | 13.4% | 5,111 | 14.7% | 5,697 | 15.2% | 6,106 | 15.9% | 7,436 | 17.6% |
| White | 20,745 | 71.8% | 21,710 | 70.9% | 24,215 | 69.5% | 25,233 | 67.5% | 25,495 | 66.3% | 26,896 | 63.8% |
| International | 144 | 0.5% | 153 | 0.5% | 95 | 0.3% | 97 | 0.3% | 94 | 0.2% | 67 | 0.2% |
| Unknown | 1,054 | 3.6% | 1,101 | 3.6% | 1,256 | 3.6% | 1,670 | 4.5% | 1,968 | 5.1% | 1,889 | 4.5% |
| MINORITY | 6,944 | 24.0% | 7,655 | 25.0% | 9,288 | 26.6% | 10,364 | 27.7% | 10,889 | 28.3% | 13,318 | 31.6% |
| WOMEN AS A % OF TOTAL | Fall 1999 | | Fall 2001 | | Fall 2003 | | Fall 2005 | | Fall 2007 | | Fall 2009 | |
| | Number | Percent | Number | Percent | Number | Percent | Number | Percent | Number | Percent | Number | Percent |
| | 15,905 | 55.1% | 16,877 | 55.1% | 19,054 | 54.7% | 20,407 | 54.6% | 20,685 | 53.8% | 22,338 | 53.0% |
| African American | 550 | 1.9% | 613 | 2.0% | 785 | 2.3% | 842 | 2.3% | 846 | 2.2% | 1,163 | 2.8% |
| American Indian | 499 | 1.7% | 548 | 1.8% | 626 | 1.8% | 790 | 2.1% | 655 | 1.7% | 696 | 1.7% |
| Asian American | 749 | 2.6% | 867 | 2.8% | 983 | 2.8% | 1,081 | 2.9% | 1,150 | 3.0% | 1,371 | 3.3% |
| Hispanic | 2,185 | 7.6% | 2,405 | 7.9% | 3,046 | 8.7% | 3,382 | 9.1% | 3,522 | 9.2% | 4,228 | 10.0% |
| White | 11,297 | 39.1% | 11,791 | 38.5% | 12,921 | 37.1% | 13,417 | 35.9% | 13,463 | 35.0% | 13,872 | 32.9% |
| International | 77 | 0.3% | 91 | 0.3% | 57 | 0.2% | 52 | 0.1% | 51 | 0.1% | 37 | 0.1% |
| Unknown | 548 | 1.9% | 562 | 1.8% | 636 | 1.8% | 843 | 2.3% | 998 | 2.6% | 971 | 2.3% |
| MINORITY | 3,983 | 13.8% | 4,433 | 14.5% | 5,440 | 15.6% | 6,095 | 16.3% | 6,173 | 16.1% | 7,458 | 17.7% |

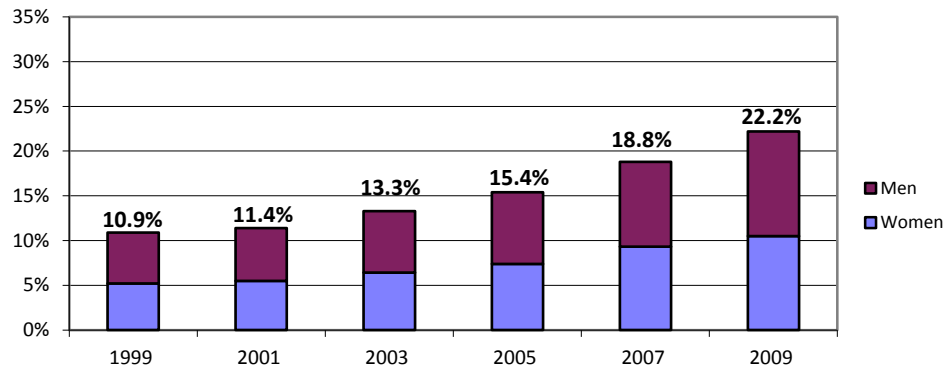
Minority Percentage of Resident Undergraduate Enrollment



Nonresident Undergraduate Enrollment ASU Total University

| | Fall 1999 | | Fall 2001 | | Fall 2003 | | Fall 2005 | | Fall 2007 | | Fall 2009 | |
|----------------------------------|--------------|---------------|--------------|---------------|---------------|---------------|---------------|---------------|---------------|---------------|---------------|---------------|
| | Number | Percent | Number | Percent | Number | Percent | Number | Percent | Number | Percent | Number | Percent |
| TOTAL | 9,101 | 100.0% | 9,662 | 100.0% | 10,576 | 100.0% | 11,591 | 100.0% | 12,865 | 100.0% | 12,107 | 100.0% |
| African American | 232 | 2.5% | 263 | 2.7% | 352 | 3.3% | 464 | 4.0% | 603 | 4.7% | 747 | 6.2% |
| American Indian | 61 | 0.7% | 54 | 0.6% | 70 | 0.7% | 76 | 0.7% | 85 | 0.7% | 90 | 0.7% |
| Asian American | 261 | 2.9% | 319 | 3.3% | 370 | 3.5% | 473 | 4.1% | 520 | 4.0% | 554 | 4.6% |
| Hispanic | 437 | 4.8% | 470 | 4.9% | 612 | 5.8% | 767 | 6.6% | 1,205 | 9.4% | 1,298 | 10.7% |
| White | 6,525 | 71.7% | 6,993 | 72.4% | 7,637 | 72.2% | 8,303 | 71.6% | 8,714 | 67.7% | 7,693 | 63.5% |
| International | 1,147 | 12.6% | 1,212 | 12.5% | 1,170 | 11.1% | 1,065 | 9.2% | 1,104 | 8.6% | 1,261 | 10.4% |
| Unknown | 438 | 4.8% | 351 | 3.6% | 365 | 3.5% | 443 | 3.8% | 634 | 4.9% | 464 | 3.8% |
| MINORITY | 991 | 10.9% | 1,106 | 11.4% | 1,404 | 13.3% | 1,780 | 15.4% | 2,413 | 18.8% | 2,689 | 22.2% |
| WOMEN AS A % OF TOTAL | Fall 1999 | | Fall 2001 | | Fall 2003 | | Fall 2005 | | Fall 2007 | | Fall 2009 | |
| | Number | Percent | Number | Percent | Number | Percent | Number | Percent | Number | Percent | Number | Percent |
| WOMEN AS A % OF TOTAL | 4,446 | 48.9% | 4,647 | 48.1% | 5,134 | 48.5% | 5,541 | 47.8% | 6,007 | 46.7% | 5,468 | 45.2% |
| African American | 102 | 1.1% | 118 | 1.2% | 173 | 1.6% | 224 | 1.9% | 271 | 2.1% | 319 | 2.6% |
| American Indian | 35 | 0.4% | 34 | 0.4% | 40 | 0.4% | 46 | 0.4% | 51 | 0.4% | 47 | 0.4% |
| Asian American | 126 | 1.4% | 150 | 1.6% | 161 | 1.5% | 204 | 1.8% | 238 | 1.8% | 245 | 2.0% |
| Hispanic | 211 | 2.3% | 228 | 2.4% | 298 | 2.8% | 380 | 3.3% | 632 | 4.9% | 662 | 5.5% |
| White | 3,325 | 36.5% | 3,544 | 36.7% | 3,858 | 36.5% | 4,100 | 35.4% | 4,138 | 32.2% | 3,590 | 29.7% |
| International | 419 | 4.6% | 399 | 4.1% | 431 | 4.1% | 404 | 3.5% | 391 | 3.0% | 405 | 3.3% |
| Unknown | 228 | 2.5% | 174 | 1.8% | 173 | 1.6% | 183 | 1.6% | 286 | 2.2% | 200 | 1.7% |
| MINORITY | 474 | 5.2% | 530 | 5.5% | 672 | 6.4% | 854 | 7.4% | 1,192 | 9.3% | 1,273 | 10.5% |

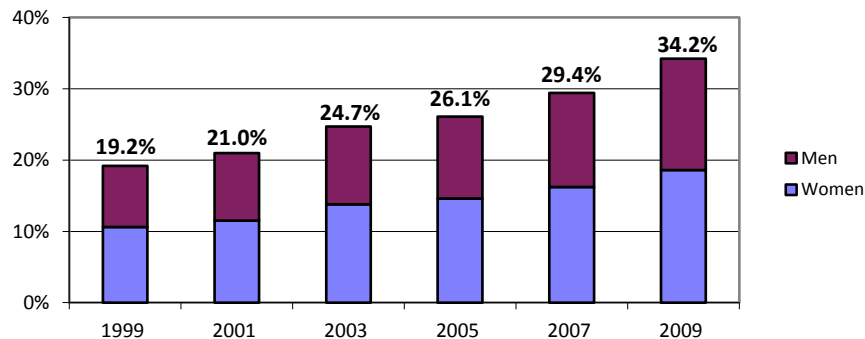
Minority Percentage of Nonresident Undergraduate Enrollment



New First-Time Freshmen ASU Total University

| | Fall 1999 | | Fall 2001 | | Fall 2003 | | Fall 2005 | | Fall 2007 | | Fall 2009 | |
|----------------------------------|--------------|---------------|--------------|---------------|--------------|---------------|--------------|---------------|--------------|---------------|--------------|---------------|
| | Number | Percent | Number | Percent | Number | Percent | Number | Percent | Number | Percent | Number | Percent |
| TOTAL | 5,968 | 100.0% | 6,586 | 100.0% | 7,647 | 100.0% | 8,467 | 100.0% | 9,274 | 100.0% | 9,344 | 100.0% |
| African American | 170 | 2.8% | 211 | 3.2% | 310 | 4.1% | 363 | 4.3% | 432 | 4.7% | 590 | 6.3% |
| American Indian | 115 | 1.9% | 137 | 2.1% | 156 | 2.0% | 211 | 2.5% | 198 | 2.1% | 176 | 1.9% |
| Asian American | 279 | 4.7% | 354 | 5.4% | 419 | 5.5% | 480 | 5.7% | 569 | 6.1% | 640 | 6.8% |
| Hispanic | 584 | 9.8% | 679 | 10.3% | 1,007 | 13.2% | 1,155 | 13.6% | 1,525 | 16.4% | 1,787 | 19.1% |
| White | 4,101 | 68.7% | 4,829 | 73.3% | 5,363 | 70.1% | 5,720 | 67.6% | 6,049 | 65.2% | 5,682 | 60.8% |
| International | 120 | 2.0% | 149 | 2.3% | 131 | 1.7% | 118 | 1.4% | 172 | 1.9% | 201 | 2.2% |
| Unknown | 599 | 10.0% | 227 | 3.4% | 261 | 3.4% | 420 | 5.0% | 329 | 3.5% | 268 | 2.9% |
| MINORITY | 1,148 | 19.2% | 1,381 | 21.0% | 1,892 | 24.7% | 2,209 | 26.1% | 2,724 | 29.4% | 3,193 | 34.2% |
| WOMEN AS A % OF TOTAL | Fall 1999 | | Fall 2001 | | Fall 2003 | | Fall 2005 | | Fall 2007 | | Fall 2009 | |
| | Number | Percent | Number | Percent | Number | Percent | Number | Percent | Number | Percent | Number | Percent |
| WOMEN AS A % OF TOTAL | 3,250 | 54.5% | 3,486 | 52.9% | 4,082 | 53.4% | 4,472 | 52.8% | 4,863 | 52.4% | 4,823 | 51.6% |
| African American | 93 | 1.6% | 107 | 1.6% | 192 | 2.5% | 215 | 2.5% | 229 | 2.5% | 320 | 3.4% |
| American Indian | 68 | 1.1% | 89 | 1.4% | 97 | 1.3% | 131 | 1.5% | 117 | 1.3% | 105 | 1.1% |
| Asian American | 129 | 2.2% | 181 | 2.7% | 206 | 2.7% | 229 | 2.7% | 275 | 3.0% | 293 | 3.1% |
| Hispanic | 341 | 5.7% | 379 | 5.8% | 562 | 7.3% | 660 | 7.8% | 878 | 9.5% | 1,020 | 10.9% |
| White | 2,252 | 37.7% | 2,565 | 38.9% | 2,847 | 37.2% | 2,999 | 35.4% | 3,126 | 33.7% | 2,895 | 31.0% |
| International | 39 | 0.7% | 47 | 0.7% | 48 | 0.6% | 39 | 0.5% | 54 | 0.6% | 64 | 0.7% |
| Unknown | 328 | 5.5% | 118 | 1.8% | 130 | 1.7% | 199 | 2.4% | 184 | 2.0% | 126 | 1.3% |
| MINORITY | 631 | 10.6% | 756 | 11.5% | 1,057 | 13.8% | 1,235 | 14.6% | 1,499 | 16.2% | 1,738 | 18.6% |

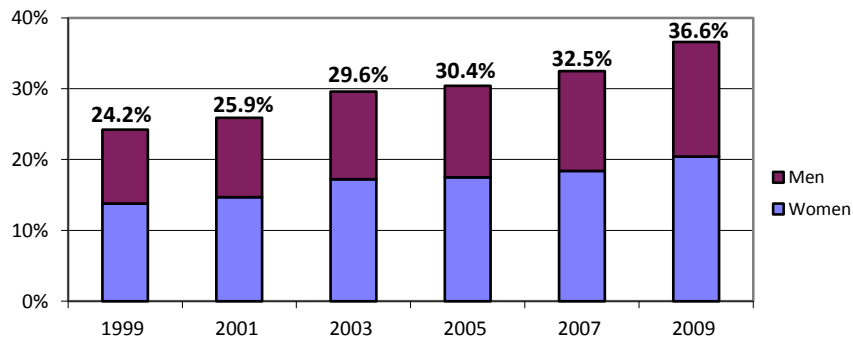
Minority Percentage of New First-Time Freshmen



New Resident First-Time Freshmen ASU Total University

| | Fall 1999 | | Fall 2001 | | Fall 2003 | | Fall 2005 | | Fall 2007 | | Fall 2009 | |
|----------------------------------|--------------|---------------|--------------|---------------|--------------|---------------|--------------|---------------|--------------|---------------|--------------|---------------|
| | Number | Percent | Number | Percent | Number | Percent | Number | Percent | Number | Percent | Number | Percent |
| TOTAL | 3,842 | 100.0% | 4,163 | 100.0% | 4,831 | 100.0% | 5,466 | 100.0% | 6,031 | 100.0% | 6,497 | 100.0% |
| African American | 114 | 3.0% | 142 | 3.4% | 197 | 4.1% | 207 | 3.8% | 248 | 4.1% | 330 | 5.1% |
| American Indian | 104 | 2.7% | 113 | 2.7% | 137 | 2.8% | 187 | 3.4% | 167 | 2.8% | 159 | 2.4% |
| Asian American | 224 | 5.8% | 269 | 6.5% | 316 | 6.5% | 344 | 6.3% | 431 | 7.1% | 494 | 7.6% |
| Hispanic | 486 | 12.6% | 556 | 13.4% | 782 | 16.2% | 923 | 16.9% | 1,114 | 18.5% | 1,394 | 21.5% |
| White | 2,554 | 66.5% | 2,921 | 70.2% | 3,232 | 66.9% | 3,498 | 64.0% | 3,851 | 63.9% | 3,925 | 60.4% |
| International | 23 | 0.6% | 13 | 0.3% | 15 | 0.3% | 15 | 0.3% | 17 | 0.3% | 13 | 0.2% |
| Unknown | 337 | 8.8% | 149 | 3.6% | 152 | 3.1% | 292 | 5.3% | 203 | 3.4% | 182 | 2.8% |
| MINORITY | 928 | 24.2% | 1,080 | 25.9% | 1,432 | 29.6% | 1,661 | 30.4% | 1,960 | 32.5% | 2,377 | 36.6% |
| WOMEN AS A % OF TOTAL | Fall 1999 | | Fall 2001 | | Fall 2003 | | Fall 2005 | | Fall 2007 | | Fall 2009 | |
| | Number | Percent | Number | Percent | Number | Percent | Number | Percent | Number | Percent | Number | Percent |
| | 2,180 | 56.7% | 2,248 | 54.0% | 2,627 | 54.4% | 2,995 | 54.8% | 3,279 | 54.4% | 3,467 | 53.4% |
| African American | 71 | 1.8% | 77 | 1.8% | 136 | 2.8% | 128 | 2.3% | 146 | 2.4% | 197 | 3.0% |
| American Indian | 60 | 1.6% | 75 | 1.8% | 84 | 1.7% | 114 | 2.1% | 97 | 1.6% | 95 | 1.5% |
| Asian American | 102 | 2.7% | 143 | 3.4% | 159 | 3.3% | 172 | 3.1% | 212 | 3.5% | 230 | 3.5% |
| Hispanic | 297 | 7.7% | 316 | 7.6% | 453 | 9.4% | 544 | 10.0% | 654 | 10.8% | 806 | 12.4% |
| White | 1,452 | 37.8% | 1,550 | 37.2% | 1,714 | 35.5% | 1,884 | 34.5% | 2,043 | 33.9% | 2,046 | 31.5% |
| International | 9 | 0.2% | 9 | 0.2% | 8 | 0.2% | 5 | 0.1% | 9 | 0.1% | 8 | 0.1% |
| Unknown | 189 | 4.9% | 78 | 1.9% | 73 | 1.5% | 148 | 2.7% | 118 | 2.0% | 85 | 1.3% |
| MINORITY | 530 | 13.8% | 611 | 14.7% | 832 | 17.2% | 958 | 17.5% | 1,109 | 18.4% | 1,328 | 20.4% |

Minority Percentage of New Resident First-Time Freshmen

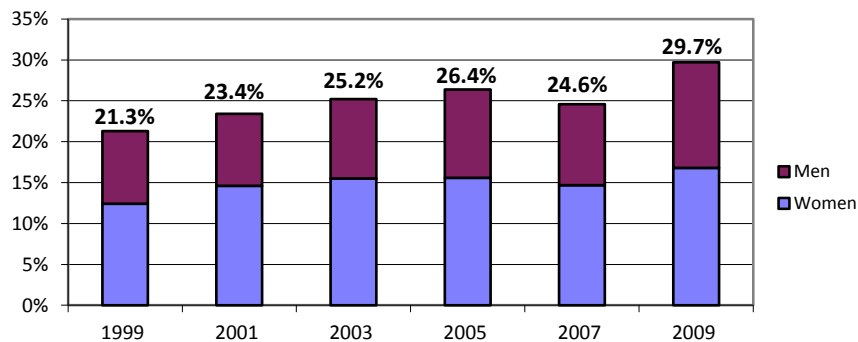


New Transfers

ASU Total University

| | Fall 1999 | | Fall 2001 | | Fall 2003 | | Fall 2005 | | Fall 2007 | | Fall 2009 | |
|------------------------------|--------------|---------------|--------------|---------------|--------------|---------------|--------------|---------------|--------------|---------------|--------------|---------------|
| | Number | Percent | Number | Percent | Number | Percent | Number | Percent | Number | Percent | Number | Percent |
| TOTAL | 4,743 | 100.0% | 4,895 | 100.0% | 5,506 | 100.0% | 5,395 | 100.0% | 4,910 | 100.0% | 5,388 | 100.0% |
| African American | 157 | 3.3% | 166 | 3.4% | 246 | 4.5% | 245 | 4.5% | 186 | 3.8% | 339 | 6.3% |
| American Indian | 120 | 2.5% | 164 | 3.4% | 169 | 3.1% | 179 | 3.3% | 127 | 2.6% | 142 | 2.6% |
| Asian American | 163 | 3.4% | 186 | 3.8% | 199 | 3.6% | 221 | 4.1% | 170 | 3.5% | 262 | 4.9% |
| Hispanic | 568 | 12.0% | 629 | 12.8% | 772 | 14.0% | 778 | 14.4% | 723 | 14.7% | 859 | 15.9% |
| White | 3,305 | 69.7% | 3,382 | 69.1% | 3,706 | 67.3% | 3,569 | 66.2% | 2,773 | 56.5% | 3,328 | 61.8% |
| International | 171 | 3.6% | 196 | 4.0% | 173 | 3.1% | 137 | 2.5% | 95 | 1.9% | 153 | 2.8% |
| Unknown | 259 | 5.5% | 172 | 3.5% | 241 | 4.4% | 266 | 4.9% | 836 | 17.0% | 305 | 5.7% |
| MINORITY | 1,008 | 21.3% | 1,145 | 23.4% | 1,386 | 25.2% | 1,423 | 26.4% | 1,206 | 24.6% | 1,602 | 29.7% |
| WOMEN AS A % OF TOTAL | Fall 1999 | | Fall 2001 | | Fall 2003 | | Fall 2005 | | Fall 2007 | | Fall 2009 | |
| | Number | Percent | Number | Percent | Number | Percent | Number | Percent | Number | Percent | Number | Percent |
| WOMEN AS A % OF TOTAL | 2,646 | 55.8% | 2,712 | 55.4% | 3,045 | 55.3% | 2,904 | 53.8% | 2,635 | 53.7% | 2,735 | 50.8% |
| African American | 94 | 2.0% | 107 | 2.2% | 135 | 2.5% | 121 | 2.2% | 110 | 2.2% | 194 | 3.6% |
| American Indian | 82 | 1.7% | 106 | 2.2% | 121 | 2.2% | 120 | 2.2% | 88 | 1.8% | 89 | 1.7% |
| Asian American | 76 | 1.6% | 104 | 2.1% | 119 | 2.2% | 121 | 2.2% | 102 | 2.1% | 133 | 2.5% |
| Hispanic | 334 | 7.0% | 391 | 8.0% | 481 | 8.7% | 477 | 8.8% | 421 | 8.6% | 487 | 9.0% |
| White | 1,855 | 39.1% | 1,848 | 37.8% | 1,981 | 36.0% | 1,878 | 34.8% | 1,472 | 30.0% | 1,642 | 30.5% |
| International | 72 | 1.5% | 85 | 1.7% | 82 | 1.5% | 60 | 1.1% | 42 | 0.9% | 48 | 0.9% |
| Unknown | 133 | 2.8% | 71 | 1.5% | 126 | 2.3% | 127 | 2.4% | 400 | 8.1% | 142 | 2.6% |
| MINORITY | 586 | 12.4% | 708 | 14.5% | 856 | 15.5% | 839 | 15.6% | 721 | 14.7% | 903 | 16.8% |

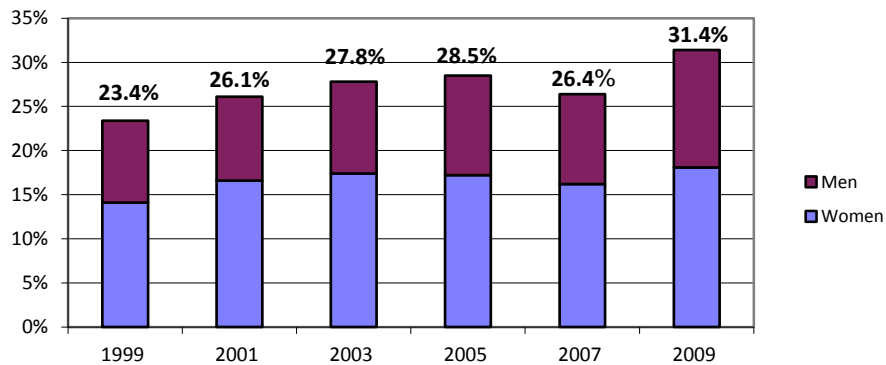
Minority Percentage of New Transfer Students



New Resident Transfers ASU Total University

| | Fall 1999 | | Fall 2001 | | Fall 2003 | | Fall 2005 | | Fall 2007 | | Fall 2009 | |
|----------------------------------|--------------|---------------|--------------|---------------|--------------|---------------|--------------|---------------|--------------|---------------|--------------|---------------|
| | Number | Percent | Number | Percent | Number | Percent | Number | Percent | Number | Percent | Number | Percent |
| TOTAL | 3,814 | 100.0% | 3,941 | 100.0% | 4,493 | 100.0% | 4,252 | 100.0% | 3,914 | 100.0% | 4,401 | 100.0% |
| African American | 133 | 3.5% | 140 | 3.6% | 203 | 4.5% | 188 | 4.4% | 141 | 3.6% | 277 | 6.3% |
| American Indian | 111 | 2.9% | 158 | 4.0% | 160 | 3.6% | 168 | 4.0% | 120 | 3.1% | 132 | 3.0% |
| Asian American | 134 | 3.5% | 153 | 3.9% | 166 | 3.7% | 174 | 4.1% | 133 | 3.4% | 215 | 4.9% |
| Hispanic | 516 | 13.5% | 577 | 14.6% | 719 | 16.0% | 681 | 16.0% | 641 | 16.4% | 760 | 17.3% |
| White | 2,692 | 70.6% | 2,748 | 69.7% | 3,039 | 67.6% | 2,813 | 66.2% | 2,217 | 56.6% | 2,749 | 62.5% |
| International | 25 | 0.7% | 24 | 0.6% | 10 | 0.2% | 13 | 0.3% | 7 | 0.2% | 3 | 0.1% |
| Unknown | 203 | 5.3% | 141 | 3.6% | 196 | 4.4% | 215 | 5.1% | 655 | 16.7% | 265 | 6.0% |
| MINORITY | 894 | 23.4% | 1,028 | 26.1% | 1,248 | 27.8% | 1,211 | 28.5% | 1,035 | 26.4% | 1,384 | 31.4% |
| WOMEN AS A % OF TOTAL | Fall 1999 | | Fall 2001 | | Fall 2003 | | Fall 2005 | | Fall 2007 | | Fall 2009 | |
| | Number | Percent | Number | Percent | Number | Percent | Number | Percent | Number | Percent | Number | Percent |
| WOMEN AS A % OF TOTAL | 2,181 | 57.2% | 2,246 | 57.0% | 2,554 | 56.8% | 2,381 | 56.0% | 2,166 | 55.3% | 2,309 | 52.5% |
| African American | 84 | 2.2% | 98 | 2.5% | 109 | 2.4% | 98 | 2.3% | 86 | 2.2% | 166 | 3.8% |
| American Indian | 76 | 2.0% | 100 | 2.5% | 117 | 2.6% | 115 | 2.7% | 86 | 2.2% | 85 | 1.9% |
| Asian American | 64 | 1.7% | 86 | 2.2% | 101 | 2.2% | 98 | 2.3% | 82 | 2.1% | 108 | 2.5% |
| Hispanic | 313 | 8.2% | 367 | 9.3% | 456 | 10.1% | 421 | 9.9% | 380 | 9.7% | 437 | 9.9% |
| White | 1,524 | 40.0% | 1,528 | 38.8% | 1,654 | 36.8% | 1,530 | 36.0% | 1,212 | 31.0% | 1,387 | 31.5% |
| International | 16 | 0.4% | 14 | 0.4% | 8 | 0.2% | 12 | 0.3% | 3 | 0.1% | 1 | 0.0% |
| Unknown | 104 | 2.7% | 53 | 1.3% | 109 | 2.4% | 107 | 2.5% | 317 | 8.1% | 125 | 2.8% |
| MINORITY | 537 | 14.1% | 651 | 16.5% | 783 | 17.4% | 732 | 17.2% | 634 | 16.2% | 796 | 18.1% |

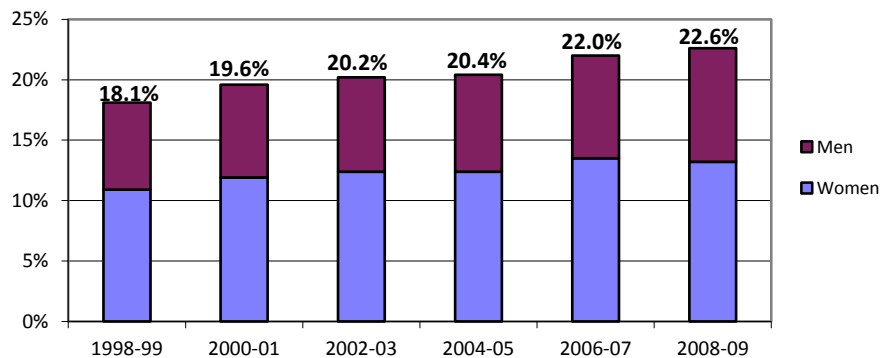
Minority Percentage of New Resident Transfers



Baccalaureate Degrees ASU Total University

| | 1998-99 | | 2000-01 | | 2002-03 | | 2004-05 | | 2006-07 | | 2008-09 | |
|----------------------------------|--------------|---------------|--------------|---------------|--------------|---------------|--------------|---------------|---------------|---------------|---------------|---------------|
| | Number | Percent | Number | Percent | Number | Percent | Number | Percent | Number | Percent | Number | Percent |
| TOTAL | 7,507 | 100.0% | 7,742 | 100.0% | 8,566 | 100.0% | 9,729 | 100.0% | 10,137 | 100.0% | 11,229 | 100.0% |
| African American | 153 | 2.0% | 232 | 3.0% | 245 | 2.9% | 273 | 2.8% | 307 | 3.0% | 378 | 3.4% |
| American Indian | 123 | 1.6% | 134 | 1.7% | 150 | 1.8% | 164 | 1.7% | 178 | 1.8% | 187 | 1.7% |
| Asian American | 330 | 4.4% | 354 | 4.6% | 396 | 4.6% | 463 | 4.8% | 503 | 5.0% | 550 | 4.9% |
| Hispanic | 752 | 10.0% | 798 | 10.3% | 943 | 11.0% | 1,085 | 11.2% | 1,244 | 12.3% | 1,420 | 12.6% |
| White | 5,691 | 75.8% | 5,769 | 74.5% | 6,283 | 73.3% | 7,061 | 72.6% | 7,281 | 71.8% | 7,964 | 70.9% |
| International | 265 | 3.5% | 298 | 3.8% | 297 | 3.5% | 297 | 3.1% | 235 | 2.3% | 257 | 2.3% |
| Unknown | 193 | 2.6% | 157 | 2.0% | 252 | 2.9% | 386 | 4.0% | 389 | 3.8% | 473 | 4.2% |
| MINORITY | 1,358 | 18.1% | 1,518 | 19.6% | 1,734 | 20.2% | 1,985 | 20.4% | 2,232 | 22.0% | 2,535 | 22.6% |
| WOMEN AS A % OF TOTAL | 1998-99 | | 2000-01 | | 2002-03 | | 2004-05 | | 2006-07 | | 2008-09 | |
| | Number | Percent | Number | Percent | Number | Percent | Number | Percent | Number | Percent | Number | Percent |
| WOMEN AS A % OF TOTAL | 4,161 | 55.4% | 4,411 | 57.0% | 4,890 | 57.1% | 5,520 | 56.7% | 5,703 | 56.3% | 6,154 | 54.8% |
| African American | 93 | 1.2% | 141 | 1.8% | 146 | 1.7% | 170 | 1.7% | 192 | 1.9% | 215 | 1.9% |
| American Indian | 71 | 0.9% | 87 | 1.1% | 106 | 1.2% | 119 | 1.2% | 123 | 1.2% | 135 | 1.2% |
| Asian American | 199 | 2.7% | 188 | 2.4% | 223 | 2.6% | 236 | 2.4% | 273 | 2.7% | 297 | 2.6% |
| Hispanic | 455 | 6.1% | 504 | 6.5% | 586 | 6.8% | 679 | 7.0% | 780 | 7.7% | 833 | 7.4% |
| White | 3,129 | 41.7% | 3,288 | 42.5% | 3,575 | 41.7% | 3,972 | 40.8% | 4,033 | 39.8% | 4,341 | 38.7% |
| International | 119 | 1.6% | 126 | 1.6% | 110 | 1.3% | 131 | 1.3% | 97 | 1.0% | 105 | 0.9% |
| Unknown | 95 | 1.3% | 77 | 1.0% | 144 | 1.7% | 213 | 2.2% | 205 | 2.0% | 228 | 2.0% |
| MINORITY | 818 | 10.9% | 920 | 11.9% | 1,061 | 12.4% | 1,204 | 12.4% | 1,368 | 13.5% | 1,480 | 13.2% |

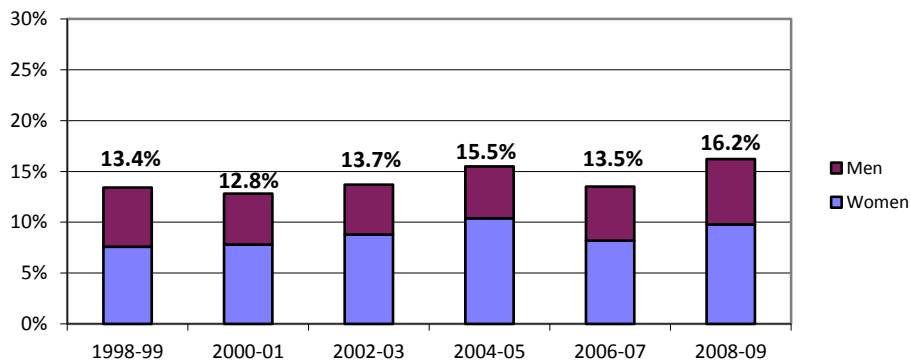
Minority Percentage of Baccalaureate Degrees Awarded



Graduate Degrees ASU Total University

| | 1998-99 | | 2000-01 | | 2002-03 | | 2004-05 | | 2006-07 | | 2008-09 | |
|----------------------------------|--------------|---------------|--------------|---------------|--------------|---------------|--------------|---------------|--------------|---------------|--------------|---------------|
| | Number | Percent | Number | Percent | Number | Percent | Number | Percent | Number | Percent | Number | Percent |
| TOTAL | 2,938 | 100.0% | 2,870 | 100.0% | 3,237 | 100.0% | 3,092 | 100.0% | 3,492 | 100.0% | 4,381 | 100.0% |
| African American | 82 | 2.8% | 45 | 1.6% | 65 | 2.0% | 84 | 2.7% | 80 | 2.3% | 129 | 2.9% |
| American Indian | 29 | 1.0% | 37 | 1.3% | 70 | 2.2% | 72 | 2.3% | 45 | 1.3% | 64 | 1.5% |
| Asian American | 99 | 3.4% | 102 | 3.6% | 114 | 3.5% | 101 | 3.3% | 116 | 3.3% | 191 | 4.4% |
| Hispanic | 185 | 6.3% | 184 | 6.4% | 195 | 6.0% | 221 | 7.1% | 230 | 6.6% | 326 | 7.4% |
| White | 1,931 | 65.7% | 1,860 | 64.8% | 2,061 | 63.7% | 1,766 | 57.1% | 1,673 | 47.9% | 2,290 | 52.3% |
| International | 512 | 17.4% | 583 | 20.3% | 642 | 19.8% | 553 | 17.9% | 599 | 17.2% | 860 | 19.6% |
| Unknown | 100 | 3.4% | 59 | 2.1% | 90 | 2.8% | 295 | 9.5% | 749 | 21.4% | 521 | 11.9% |
| MINORITY | 395 | 13.4% | 368 | 12.8% | 444 | 13.7% | 478 | 15.5% | 471 | 13.5% | 710 | 16.2% |
| WOMEN AS A % OF TOTAL | 1998-99 | | 2000-01 | | 2002-03 | | 2004-05 | | 2006-07 | | 2008-09 | |
| | Number | Percent | Number | Percent | Number | Percent | Number | Percent | Number | Percent | Number | Percent |
| | 1,490 | 50.7% | 1,414 | 49.3% | 1,631 | 50.4% | 1,644 | 53.2% | 1,797 | 51.5% | 2,252 | 51.4% |
| African American | 49 | 1.7% | 33 | 1.1% | 40 | 1.2% | 56 | 1.8% | 53 | 1.5% | 82 | 1.9% |
| American Indian | 17 | 0.6% | 26 | 0.9% | 55 | 1.7% | 52 | 1.7% | 30 | 0.9% | 43 | 1.0% |
| Asian American | 53 | 1.8% | 53 | 1.8% | 65 | 2.0% | 62 | 2.0% | 63 | 1.8% | 106 | 2.4% |
| Hispanic | 105 | 3.6% | 113 | 3.9% | 125 | 3.9% | 152 | 4.9% | 140 | 4.0% | 200 | 4.6% |
| White | 1,057 | 36.0% | 971 | 33.8% | 1,114 | 34.4% | 978 | 31.6% | 907 | 26.0% | 1,254 | 28.6% |
| International | 156 | 5.3% | 183 | 6.4% | 196 | 6.1% | 183 | 5.9% | 213 | 6.1% | 282 | 6.4% |
| Unknown | 53 | 1.8% | 35 | 1.2% | 36 | 1.1% | 161 | 5.2% | 391 | 11.2% | 285 | 6.5% |
| MINORITY | 224 | 7.6% | 225 | 7.8% | 285 | 8.8% | 322 | 10.4% | 286 | 8.2% | 431 | 9.8% |

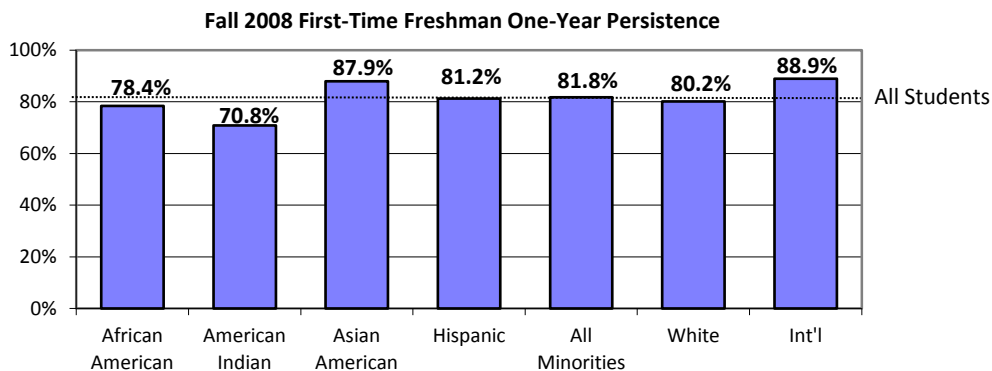
Minority Percentage of Graduate Degrees Awarded



One-Year Persistence Rates for First-Time Full-Time Freshmen ASU Total University

First-time freshmen are new degree-seeking undergraduates who graduated from high school the previous year and new freshmen with fewer than 12 transfer credits.

| | 1998 | | 2000 | | 2002 | | 2004 | | 2006 | | 2008 | |
|------------------|--------------|--------------|--------------|--------------|--------------|--------------|--------------|--------------|--------------|--------------|--------------|--------------|
| | No. Entering | % Persisting | No. Entering | % Persisting | No. Entering | % Persisting | No. Entering | % Persisting | No. Entering | % Persisting | No. Entering | % Persisting |
| TOTAL | 4,772 | 75.2% | 5,754 | 76.3% | 6,421 | 76.7% | 7,293 | 79.0% | 8,533 | 77.2% | 8,317 | 81.2% |
| African American | 143 | 76.9% | 187 | 67.9% | 204 | 70.6% | 249 | 73.9% | 394 | 67.8% | 371 | 78.4% |
| American Indian | 104 | 67.3% | 111 | 57.7% | 136 | 61.8% | 144 | 64.6% | 177 | 58.8% | 137 | 70.8% |
| Asian American | 244 | 81.1% | 305 | 84.6% | 336 | 85.4% | 379 | 83.4% | 517 | 84.7% | 579 | 87.9% |
| Hispanic | 530 | 72.6% | 633 | 75.0% | 764 | 74.2% | 942 | 77.9% | 1,259 | 73.1% | 1,449 | 81.2% |
| White | 3,484 | 75.2% | 4,170 | 76.6% | 4,559 | 77.0% | 5,111 | 79.2% | 5,722 | 78.5% | 5,195 | 80.2% |
| International | 139 | 81.3% | 124 | 81.5% | 101 | 83.2% | 113 | 89.4% | 142 | 86.6% | 162 | 88.9% |
| Unknown | 128 | 73.4% | 224 | 76.8% | 321 | 76.3% | 355 | 79.7% | 322 | 75.8% | 424 | 86.3% |
| MINORITY | 1,021 | 74.7% | 1,236 | 74.8% | 1,440 | 75.1% | 1,714 | 77.4% | 2,347 | 73.7% | 2,536 | 81.8% |
| | 1998 | | 2000 | | 2002 | | 2004 | | 2006 | | 2008 | |
| | No. Entering | % Persisting | No. Entering | % Persisting | No. Entering | % Persisting | No. Entering | % Persisting | No. Entering | % Persisting | No. Entering | % Persisting |
| WOMEN | 2,572 | 76.8% | 3,071 | 77.8% | 3,561 | 77.2% | 3,998 | 79.3% | 4,556 | 77.2% | 4,344 | 82.8% |
| African American | 69 | 81.2% | 106 | 73.6% | 116 | 71.6% | 159 | 76.7% | 206 | 67.0% | 199 | 79.9% |
| American Indian | 68 | 72.1% | 66 | 57.6% | 76 | 57.9% | 91 | 63.7% | 113 | 54.9% | 79 | 75.9% |
| Asian American | 134 | 82.1% | 153 | 85.0% | 190 | 86.3% | 194 | 85.1% | 276 | 84.4% | 287 | 89.2% |
| Hispanic | 299 | 73.2% | 357 | 75.6% | 465 | 74.6% | 552 | 79.2% | 734 | 73.3% | 797 | 81.1% |
| White | 1,890 | 76.9% | 2,235 | 78.2% | 2,498 | 77.7% | 2,789 | 79.6% | 3,024 | 78.9% | 2,702 | 82.5% |
| International | 53 | 83.0% | 43 | 83.7% | 41 | 82.9% | 38 | 84.2% | 43 | 95.3% | 52 | 90.4% |
| Unknown | 59 | 74.6% | 111 | 81.1% | 175 | 77.7% | 175 | 78.3% | 160 | 75.0% | 228 | 87.3% |
| MINORITY | 570 | 76.1% | 682 | 75.7% | 847 | 75.3% | 996 | 78.5% | 1,329 | 73.1% | 1,362 | 82.3% |

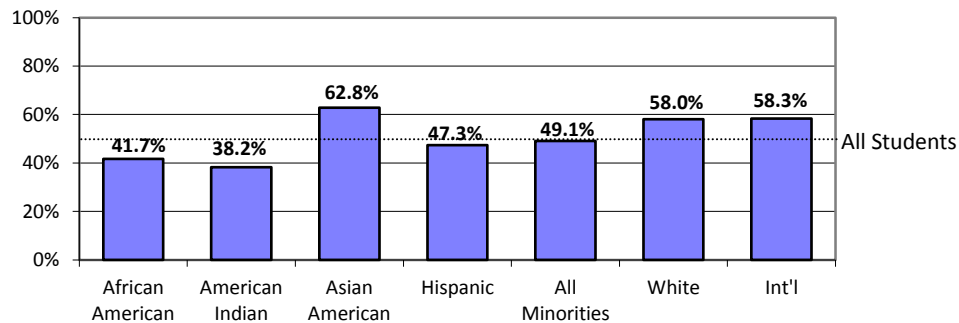


Six-Year Graduation Rates for First-Time Full-Time Freshmen ASU Total University

First-time freshmen are new degree-seeking undergraduates who graduated from high school the previous year and new freshmen with fewer than 12 transfer credits.

| | 1993 | | 1995 | | 1997 | | 1999 | | 2001 | | 2003 | |
|------------------|--------------|--------------|--------------|--------------|--------------|--------------|--------------|--------------|--------------|--------------|--------------|--------------|
| | No. Entering | % Graduating | No. Entering | % Graduating | No. Entering | % Graduating | No. Entering | % Graduating | No. Entering | % Graduating | No. Entering | % Graduating |
| TOTAL | 3,298 | 47.2% | 3,947 | 49.2% | 4,961 | 51.9% | 5,667 | 55.0% | 6,198 | 55.6% | 7,228 | 55.8% |
| African American | 71 | 26.8% | 111 | 36.9% | 174 | 44.8% | 154 | 42.9% | 202 | 43.6% | 295 | 41.7% |
| American Indian | 74 | 27.0% | 94 | 28.7% | 124 | 26.6% | 106 | 25.5% | 126 | 26.2% | 144 | 38.2% |
| Asian American | 155 | 56.1% | 198 | 56.6% | 261 | 58.6% | 267 | 62.2% | 337 | 64.7% | 401 | 62.8% |
| Hispanic | 318 | 44.3% | 457 | 44.2% | 507 | 44.4% | 565 | 48.3% | 645 | 51.2% | 935 | 47.3% |
| White | 2,489 | 47.9% | 2,894 | 50.0% | 3,703 | 53.5% | 3,879 | 56.7% | 4,538 | 57.0% | 5,072 | 58.0% |
| International | 110 | 54.5% | 95 | 62.1% | 92 | 57.6% | 115 | 64.3% | 144 | 61.8% | 139 | 58.3% |
| Unknown | 81 | 44.4% | 98 | 55.1% | 100 | 52.0% | 581 | 53.2% | 206 | 49.5% | 242 | 57.0% |
| MINORITY | 618 | 43.2% | 860 | 44.4% | 1,066 | 45.9% | 1,092 | 48.7% | 1,310 | 51.1% | 1,775 | 49.1% |
| | 1993 | | 1995 | | 1997 | | 1999 | | 2001 | | 2003 | |
| WOMEN | No. Entering | % Graduating | No. Entering | % Graduating | No. Entering | % Graduating | No. Entering | % Graduating | No. Entering | % Graduating | No. Entering | % Graduating |
| TOTAL | 1,637 | 52.5% | 2,097 | 54.1% | 2,652 | 56.4% | 3,110 | 59.4% | 3,347 | 59.7% | 3,933 | 58.6% |
| African American | 33 | 30.3% | 62 | 40.3% | 100 | 48.0% | 86 | 50.0% | 103 | 52.4% | 181 | 43.1% |
| American Indian | 47 | 29.8% | 60 | 26.7% | 88 | 31.8% | 64 | 26.6% | 84 | 31.0% | 90 | 35.6% |
| Asian American | 85 | 60.0% | 109 | 59.6% | 151 | 65.6% | 125 | 69.6% | 173 | 63.6% | 200 | 65.5% |
| Hispanic | 154 | 48.7% | 256 | 49.6% | 261 | 52.9% | 334 | 53.3% | 363 | 57.6% | 533 | 49.9% |
| White | 1,245 | 53.8% | 1,528 | 55.4% | 1,963 | 57.5% | 2,148 | 60.8% | 2,470 | 60.9% | 2,753 | 61.4% |
| International | 34 | 58.8% | 35 | 71.4% | 34 | 64.7% | 38 | 68.4% | 45 | 82.2% | 51 | 62.7% |
| Unknown | 39 | 51.3% | 47 | 61.7% | 55 | 56.4% | 315 | 60.0% | 109 | 53.2% | 125 | 59.2% |
| MINORITY | 319 | 47.0% | 487 | 47.8% | 600 | 52.2% | 609 | 53.4% | 723 | 55.2% | 1,004 | 50.5% |

Fall 2003 First-Time Freshmen Graduating in 6 Years



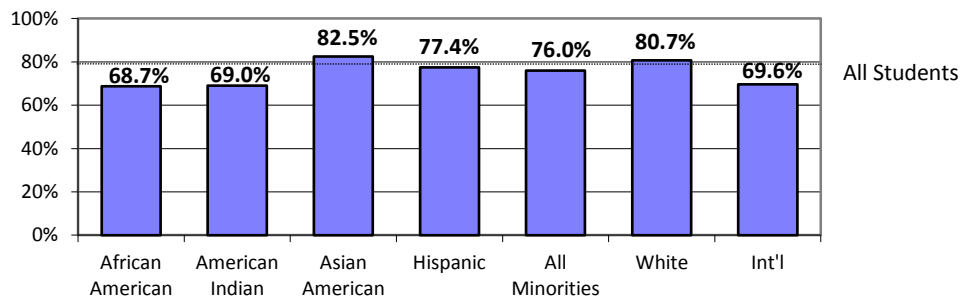
One-Year Persistence Rates for Full-Time Lower-Division Transfers ASU Total University

Lower-division transfers are new degree-seeking transfer students entering as freshmen or sophomores.

| | 1998 | | 2000 | | 2002 | | 2004 | | 2006 | | 2008 | |
|------------------|--------------|--------------|--------------|--------------|--------------|--------------|--------------|--------------|--------------|--------------|--------------|--------------|
| | No. Entering | % Persisting | No. Entering | % Persisting | No. Entering | % Persisting | No. Entering | % Persisting | No. Entering | % Persisting | No. Entering | % Persisting |
| TOTAL | 1,429 | 74.8% | 1,386 | 75.5% | 1,579 | 75.2% | 1,451 | 77.1% | 1,434 | 75.1% | 1,666 | 79.2% |
| African American | 41 | 61.0% | 44 | 75.0% | 49 | 67.3% | 61 | 77.0% | 63 | 66.7% | 83 | 68.7% |
| American Indian | 28 | 60.7% | 31 | 58.1% | 47 | 72.3% | 28 | 53.6% | 38 | 57.9% | 29 | 69.0% |
| Asian American | 51 | 80.4% | 52 | 80.8% | 48 | 81.3% | 46 | 76.1% | 73 | 74.0% | 80 | 82.5% |
| Hispanic | 164 | 68.9% | 135 | 72.6% | 175 | 74.9% | 152 | 67.1% | 163 | 79.1% | 212 | 77.4% |
| White | 1,021 | 75.1% | 979 | 76.2% | 1,114 | 74.1% | 1,019 | 78.5% | 993 | 75.3% | 1,117 | 80.7% |
| International | 75 | 89.3% | 78 | 78.2% | 84 | 85.7% | 53 | 84.9% | 58 | 86.2% | 92 | 69.6% |
| Unknown | 49 | 79.6% | 67 | 71.6% | 62 | 83.9% | 92 | 81.5% | 46 | 69.6% | 53 | 88.7% |
| MINORITY | 284 | 69.0% | 262 | 72.9% | 319 | 74.3% | 287 | 69.3% | 337 | 73.3% | 404 | 76.0% |

| | 1998 | | 2000 | | 2002 | | 2004 | | 2006 | | 2008 | |
|------------------|--------------|--------------|--------------|--------------|--------------|--------------|--------------|--------------|--------------|--------------|--------------|--------------|
| | No. Entering | % Persisting | No. Entering | % Persisting | No. Entering | % Persisting | No. Entering | % Persisting | No. Entering | % Persisting | No. Entering | % Persisting |
| WOMEN | 732 | 75.5% | 707 | 77.2% | 771 | 76.5% | 723 | 77.0% | 732 | 76.2% | 804 | 82.8% |
| African American | 16 | 62.5% | 27 | 70.4% | 24 | 70.8% | 31 | 80.6% | 28 | 57.1% | 38 | 76.3% |
| American Indian | 18 | 44.4% | 23 | 56.5% | 27 | 74.1% | 18 | 50.0% | 30 | 63.3% | 15 | 66.7% |
| Asian American | 29 | 79.3% | 28 | 89.3% | 24 | 79.2% | 25 | 64.0% | 42 | 69.0% | 46 | 89.1% |
| Hispanic | 89 | 68.5% | 80 | 72.5% | 94 | 75.5% | 83 | 63.9% | 80 | 81.3% | 109 | 85.3% |
| White | 533 | 76.9% | 492 | 78.7% | 531 | 75.5% | 496 | 79.8% | 504 | 77.4% | 538 | 82.7% |
| International | 25 | 96.0% | 21 | 76.2% | 40 | 90.0% | 28 | 82.1% | 19 | 89.5% | 32 | 75.0% |
| Unknown | 22 | 77.3% | 36 | 77.8% | 31 | 83.9% | 42 | 83.3% | 29 | 75.9% | 26 | 92.3% |
| MINORITY | 152 | 67.1% | 158 | 72.8% | 169 | 75.1% | 157 | 65.6% | 180 | 71.7% | 208 | 83.2% |

Fall 2008 Lower-Division Transfer One-Year Persistence



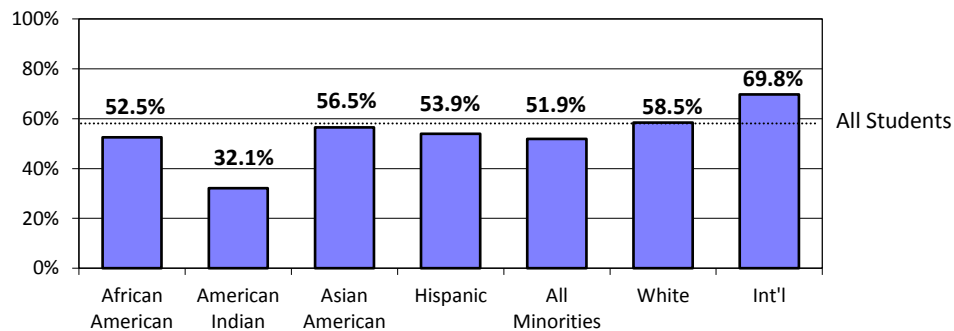
Five-Year Graduation Rates for Full-Time Lower-Division Transfers ASU Total University

Lower-division transfers are new degree-seeking transfer students entering as freshmen or sophomores.

| | 1994 | | 1996 | | 1998 | | 2000 | | 2002 | | 2004 | |
|------------------|--------------|--------------|--------------|--------------|--------------|--------------|--------------|--------------|--------------|--------------|--------------|--------------|
| | No. Entering | % Graduating | No. Entering | % Graduating | No. Entering | % Graduating | No. Entering | % Graduating | No. Entering | % Graduating | No. Entering | % Graduating |
| TOTAL | 1,832 | 51.6% | 1,637 | 54.2% | 1,429 | 60.3% | 1,386 | 59.4% | 1,579 | 57.6% | 1,451 | 57.8% |
| African American | 41 | 31.7% | 39 | 35.9% | 41 | 48.8% | 44 | 59.1% | 49 | 40.8% | 61 | 52.5% |
| American Indian | 27 | 29.6% | 32 | 31.3% | 28 | 32.1% | 31 | 22.6% | 47 | 38.3% | 28 | 32.1% |
| Asian American | 57 | 61.4% | 53 | 60.4% | 51 | 56.9% | 52 | 55.8% | 48 | 66.7% | 46 | 56.5% |
| Hispanic | 185 | 47.6% | 162 | 48.1% | 164 | 56.7% | 135 | 57.0% | 175 | 49.7% | 152 | 53.9% |
| White | 1,338 | 52.0% | 1,249 | 54.7% | 1,021 | 60.9% | 979 | 61.7% | 1,114 | 59.2% | 1,019 | 58.5% |
| International | 82 | 75.6% | 66 | 77.3% | 75 | 78.7% | 78 | 59.0% | 84 | 70.2% | 53 | 69.8% |
| Unknown | 102 | 43.1% | 36 | 52.8% | 49 | 61.2% | 67 | 50.7% | 62 | 56.5% | 92 | 60.9% |
| MINORITY | 310 | 46.5% | 286 | 46.9% | 284 | 53.2% | 262 | 53.1% | 319 | 49.2% | 287 | 51.9% |

| | 1994 | | 1996 | | 1998 | | 2000 | | 2002 | | 2004 | |
|------------------|--------------|--------------|--------------|--------------|--------------|--------------|--------------|--------------|--------------|--------------|--------------|--------------|
| | No. Entering | % Graduating | No. Entering | % Graduating | No. Entering | % Graduating | No. Entering | % Graduating | No. Entering | % Graduating | No. Entering | % Graduating |
| WOMEN | 941 | 53.6% | 789 | 57.4% | 732 | 62.3% | 707 | 64.4% | 771 | 59.0% | 723 | 59.8% |
| African American | 20 | 55.0% | 23 | 43.5% | 16 | 62.5% | 27 | 63.0% | 24 | 50.0% | 31 | 51.6% |
| American Indian | 15 | 26.7% | 14 | 35.7% | 18 | 22.2% | 23 | 26.1% | 27 | 37.0% | 18 | 33.3% |
| Asian American | 29 | 69.0% | 25 | 60.0% | 29 | 62.1% | 28 | 60.7% | 24 | 58.3% | 25 | 48.0% |
| Hispanic | 100 | 50.0% | 86 | 58.1% | 89 | 55.1% | 80 | 63.8% | 94 | 53.2% | 83 | 60.2% |
| White | 692 | 53.0% | 602 | 58.0% | 533 | 64.4% | 492 | 67.3% | 531 | 60.3% | 496 | 60.7% |
| International | 37 | 81.1% | 19 | 78.9% | 25 | 80.0% | 21 | 57.1% | 40 | 75.0% | 28 | 78.6% |
| Unknown | 48 | 45.8% | 20 | 45.0% | 22 | 54.5% | 36 | 58.3% | 31 | 61.3% | 42 | 59.5% |
| MINORITY | 164 | 51.8% | 148 | 54.1% | 152 | 53.3% | 158 | 57.6% | 169 | 50.9% | 157 | 53.5% |

Fall 2004 Lower-Division Transfers Graduating in 5 Years



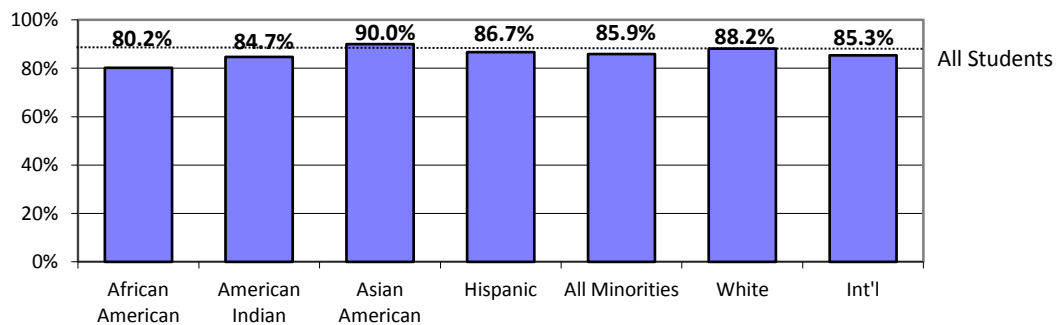
One-Year Persistence Rates for Full-Time Upper-Division Transfers ASU Total University

Upper-division transfers are new degree-seeking transfer students entering as juniors or seniors.

| | 1998 | | 2000 | | 2002 | | 2004 | | 2006 | | 2008 | |
|------------------|--------------|--------------|--------------|--------------|--------------|--------------|--------------|--------------|--------------|--------------|--------------|--------------|
| | No. Entering | % Persisting | No. Entering | % Persisting | No. Entering | % Persisting | No. Entering | % Persisting | No. Entering | % Persisting | No. Entering | % Persisting |
| TOTAL | 1,646 | 80.2% | 1,685 | 81.6% | 2,119 | 83.5% | 2,266 | 85.7% | 2,102 | 84.3% | 2,167 | 87.3% |
| African American | 48 | 81.3% | 51 | 82.4% | 77 | 74.0% | 83 | 78.3% | 105 | 78.1% | 106 | 80.2% |
| American Indian | 60 | 65.0% | 55 | 72.7% | 69 | 75.4% | 80 | 73.8% | 76 | 65.8% | 72 | 84.7% |
| Asian American | 57 | 89.5% | 58 | 86.2% | 62 | 88.7% | 78 | 85.9% | 95 | 84.2% | 100 | 90.0% |
| Hispanic | 194 | 80.9% | 212 | 82.1% | 283 | 86.2% | 310 | 86.1% | 316 | 84.5% | 360 | 86.7% |
| White | 1,198 | 80.3% | 1,176 | 82.0% | 1,485 | 84.0% | 1,512 | 87.0% | 1,367 | 86.0% | 1,391 | 88.2% |
| International | 52 | 82.7% | 55 | 83.6% | 67 | 80.6% | 59 | 79.7% | 58 | 77.6% | 34 | 85.3% |
| Unknown | 37 | 78.4% | 78 | 75.6% | 76 | 77.6% | 144 | 85.4% | 85 | 83.5% | 104 | 84.6% |
| MINORITY | 359 | 79.7% | 376 | 81.4% | 491 | 83.1% | 551 | 83.1% | 592 | 80.9% | 638 | 85.9% |

| | 1998 | | 2000 | | 2002 | | 2004 | | 2006 | | 2008 | |
|------------------|--------------|--------------|--------------|--------------|--------------|--------------|--------------|--------------|--------------|--------------|--------------|--------------|
| | No. Entering | % Persisting | No. Entering | % Persisting | No. Entering | % Persisting | No. Entering | % Persisting | No. Entering | % Persisting | No. Entering | % Persisting |
| WOMEN | 897 | 80.7% | 957 | 83.3% | 1,229 | 84.1% | 1,280 | 87.3% | 1,183 | 83.9% | 1,216 | 87.7% |
| African American | 31 | 83.9% | 30 | 86.7% | 42 | 69.0% | 47 | 80.9% | 54 | 77.8% | 48 | 79.2% |
| American Indian | 42 | 69.0% | 38 | 76.3% | 50 | 80.0% | 50 | 78.0% | 54 | 64.8% | 49 | 85.7% |
| Asian American | 27 | 92.6% | 33 | 84.8% | 43 | 93.0% | 35 | 82.9% | 46 | 78.3% | 56 | 85.7% |
| Hispanic | 112 | 80.4% | 135 | 83.7% | 166 | 86.7% | 189 | 88.9% | 191 | 85.9% | 226 | 86.7% |
| White | 642 | 80.4% | 655 | 83.8% | 861 | 84.6% | 855 | 88.3% | 762 | 86.4% | 779 | 88.6% |
| International | 24 | 87.5% | 20 | 90.0% | 32 | 84.4% | 23 | 87.0% | 27 | 70.4% | 15 | 93.3% |
| Unknown | 19 | 89.5% | 46 | 73.9% | 35 | 74.3% | 81 | 85.2% | 49 | 77.6% | 43 | 88.4% |
| MINORITY | 212 | 80.2% | 236 | 83.1% | 301 | 84.1% | 321 | 85.4% | 345 | 80.3% | 379 | 85.5% |

Fall 2008 Upper-Division Transfer One-Year Persistence



Four-Year Graduation Rates for Full-Time Upper-Division Transfers

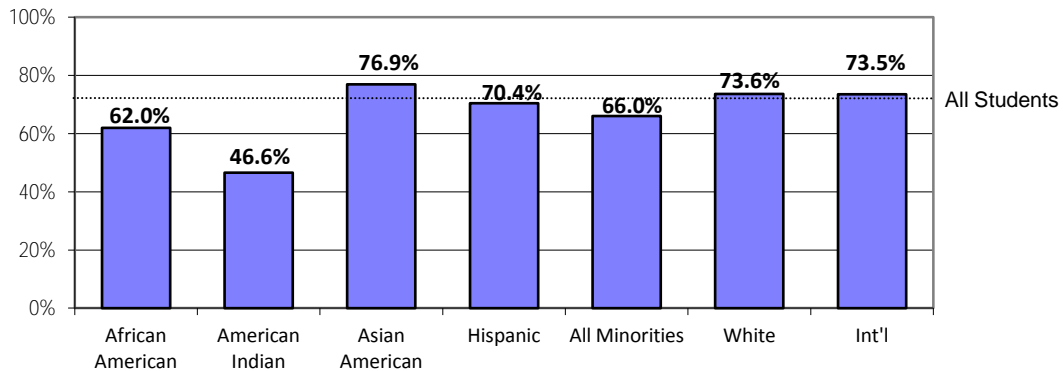
ASU Total University

Upper-division transfers are new degree-seeking transfer students entering as juniors or seniors.

| | 1995 | | 1997 | | 1999 | | 2001 | | 2003 | | 2005 | |
|------------------|--------------|--------------|--------------|--------------|--------------|--------------|--------------|--------------|--------------|--------------|--------------|--------------|
| | No. Entering | % Graduating | No. Entering | % Graduating | No. Entering | % Graduating | No. Entering | % Graduating | No. Entering | % Graduating | No. Entering | % Graduating |
| TOTAL | 1,906 | 65.6% | 1,822 | 69.0% | 1,723 | 69.2% | 1,814 | 71.6% | 2,179 | 71.0% | 2,251 | 71.3% |
| African American | 51 | 43.1% | 50 | 54.0% | 47 | 48.9% | 58 | 51.7% | 106 | 50.9% | 100 | 62.0% |
| American Indian | 50 | 42.0% | 63 | 49.2% | 67 | 52.2% | 85 | 61.2% | 95 | 54.7% | 103 | 46.6% |
| Asian American | 41 | 61.0% | 90 | 67.8% | 65 | 69.2% | 70 | 67.1% | 81 | 70.4% | 78 | 76.9% |
| Hispanic | 209 | 68.9% | 185 | 69.2% | 208 | 71.6% | 259 | 73.4% | 313 | 64.9% | 345 | 70.4% |
| White | 1,437 | 66.7% | 1,312 | 70.4% | 1,178 | 70.5% | 1,204 | 73.3% | 1,406 | 74.3% | 1,468 | 73.6% |
| International | 74 | 68.9% | 77 | 81.8% | 55 | 85.5% | 73 | 71.2% | 80 | 86.3% | 49 | 73.5% |
| Unknown | 44 | 65.9% | 45 | 55.6% | 103 | 61.2% | 65 | 69.2% | 98 | 68.4% | 108 | 70.4% |
| MINORITY | 351 | 60.4% | 388 | 63.7% | 387 | 65.1% | 472 | 67.6% | 595 | 61.5% | 626 | 66.0% |

| | 1995 | | 1997 | | 1999 | | 2001 | | 2003 | | 2005 | |
|------------------|--------------|--------------|--------------|--------------|--------------|--------------|--------------|--------------|--------------|--------------|--------------|--------------|
| | No. Entering | % Graduating | No. Entering | % Graduating | No. Entering | % Graduating | No. Entering | % Graduating | No. Entering | % Graduating | No. Entering | % Graduating |
| WOMEN | 1,023 | 69.9% | 994 | 71.4% | 992 | 70.6% | 1,033 | 73.8% | 1,245 | 74.4% | 1,266 | 75.1% |
| African American | 32 | 43.8% | 26 | 61.5% | 33 | 51.5% | 38 | 47.4% | 57 | 59.6% | 47 | 63.8% |
| American Indian | 34 | 41.2% | 41 | 51.2% | 51 | 54.9% | 55 | 60.0% | 69 | 56.5% | 71 | 47.9% |
| Asian American | 22 | 63.6% | 46 | 71.7% | 28 | 82.1% | 35 | 68.6% | 46 | 69.6% | 45 | 75.6% |
| Hispanic | 122 | 73.0% | 111 | 72.1% | 131 | 73.3% | 163 | 79.1% | 189 | 70.4% | 225 | 73.8% |
| White | 767 | 71.4% | 717 | 72.5% | 666 | 71.3% | 678 | 75.4% | 798 | 77.7% | 813 | 78.0% |
| International | 26 | 80.8% | 34 | 79.4% | 25 | 92.0% | 37 | 75.7% | 44 | 86.4% | 18 | 100.0% |
| Unknown | 20 | 75.0% | 19 | 68.4% | 58 | 65.5% | 27 | 70.4% | 42 | 71.4% | 47 | 74.5% |
| MINORITY | 210 | 62.4% | 224 | 67.0% | 243 | 67.5% | 291 | 70.1% | 361 | 65.9% | 388 | 68.0% |

Fall 2005 Upper-Division Transfers Graduating in 4 Years

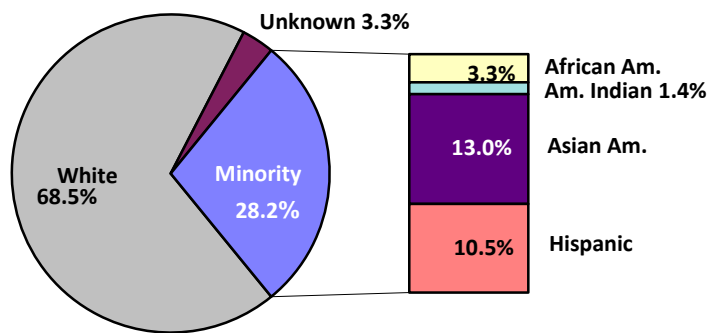


Employees

ASU Total University

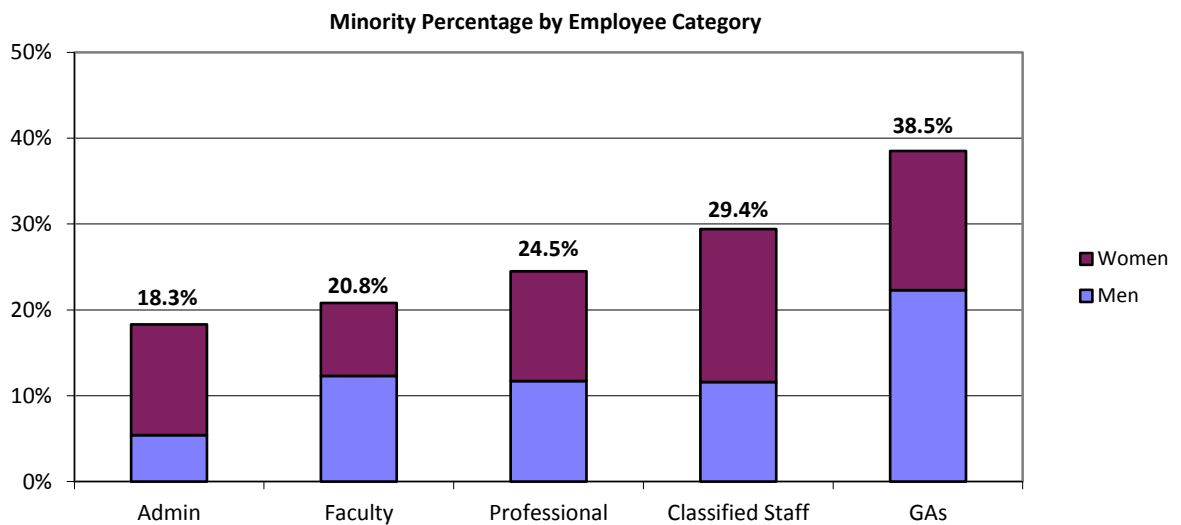
| | Fall 1999 | | Fall 2001 | | Fall 2003 | | Fall 2005 | | Fall 2007 | | Fall 2009 | |
|----------------------------------|---------------|---------------|---------------|---------------|---------------|---------------|---------------|---------------|---------------|---------------|---------------|---------------|
| | Number | Percent | Number | Percent | Number | Percent | Number | Percent | Number | Percent | Number | Percent |
| TOTAL | 10,340 | 100.0% | 10,763 | 100.0% | 11,247 | 100.0% | 11,770 | 100.0% | 12,436 | 100.0% | 12,142 | 100.0% |
| African American | 369 | 3.6% | 345 | 3.2% | 367 | 3.3% | 413 | 3.5% | 439 | 3.5% | 404 | 3.3% |
| American Indian | 165 | 1.6% | 186 | 1.7% | 188 | 1.7% | 213 | 1.8% | 201 | 1.6% | 164 | 1.4% |
| Asian American | 780 | 7.5% | 1,031 | 9.6% | 1,228 | 10.9% | 1,263 | 10.7% | 1,411 | 11.3% | 1,582 | 13.0% |
| Hispanic | 1,068 | 10.3% | 1,103 | 10.2% | 1,171 | 10.4% | 1,289 | 11.0% | 1,347 | 10.8% | 1,278 | 10.5% |
| White | 7,958 | 77.0% | 8,098 | 75.2% | 8,293 | 73.7% | 8,592 | 73.0% | 8,853 | 71.2% | 8,319 | 68.5% |
| Unknown | N/A | | N/A | | N/A | | N/A | | 185 | 1.5% | 395 | 3.3% |
| MINORITY | 2,382 | 23.0% | 2,665 | 24.8% | 2,954 | 26.3% | 3,178 | 27.0% | 3,398 | 27.3% | 3,428 | 28.2% |
| | | | | | | | | | | | | |
| WOMEN AS A % OF TOTAL | Fall 1999 | | Fall 2001 | | Fall 2003 | | Fall 2005 | | Fall 2007 | | Fall 2009 | |
| | Number | Percent | Number | Percent | Number | Percent | Number | Percent | Number | Percent | Number | Percent |
| | 5,183 | 50.1% | 5,293 | 49.2% | 5,656 | 50.3% | 5,968 | 50.7% | 6,342 | 51.0% | 6,184 | 50.9% |
| African American | 188 | 1.8% | 166 | 1.5% | 196 | 1.7% | 218 | 1.9% | 254 | 2.0% | 234 | 1.9% |
| American Indian | 85 | 0.8% | 94 | 0.9% | 96 | 0.9% | 111 | 0.9% | 101 | 0.8% | 84 | 0.7% |
| Asian American | 298 | 2.9% | 385 | 3.6% | 447 | 4.0% | 509 | 4.3% | 610 | 4.9% | 638 | 5.3% |
| Hispanic | 568 | 5.5% | 576 | 5.4% | 665 | 5.9% | 708 | 6.0% | 754 | 6.1% | 733 | 6.0% |
| White | 4,044 | 39.1% | 4,072 | 37.8% | 4,252 | 37.8% | 4,422 | 37.6% | 4,544 | 36.5% | 4,343 | 35.8% |
| Unknown | N/A | | N/A | | N/A | | N/A | | 79 | 0.6% | 152 | 1.3% |
| MINORITY | 1,139 | 11.0% | 1,221 | 11.3% | 1,404 | 12.5% | 1,546 | 13.1% | 1,719 | 13.8% | 1,689 | 13.9% |

Fall 2009 Total Employees



Fall 2009 Employee Categories ASU Total University

| | Administrators | | Faculty | | Professionals | | Classified Staff | | GAs | | Total | |
|------------------------------|----------------|---------------|--------------|---------------|---------------|---------------|------------------|---------------|--------------|---------------|---------------|---------------|
| | Number | Percent | Number | Percent | Number | Percent | Number | Percent | Number | Percent | Number | Percent |
| TOTAL | 93 | 100.0% | 2,991 | 100.0% | 2,858 | 100.0% | 3,249 | 100.0% | 2,951 | 100.0% | 12,142 | 100.0% |
| African American | 7 | 7.5% | 71 | 2.4% | 117 | 4.1% | 150 | 4.6% | 59 | 2.0% | 404 | 3.3% |
| American Indian | 0 | 0.0% | 28 | 0.9% | 30 | 1.0% | 85 | 2.6% | 21 | 0.7% | 164 | 1.4% |
| Asian American | 3 | 3.2% | 318 | 10.6% | 291 | 10.2% | 122 | 3.8% | 848 | 28.7% | 1,582 | 13.0% |
| Hispanic | 7 | 7.5% | 205 | 6.9% | 261 | 9.1% | 597 | 18.4% | 208 | 7.0% | 1,278 | 10.5% |
| White | 76 | 81.7% | 2,337 | 78.1% | 2,103 | 73.6% | 2,255 | 69.4% | 1,548 | 52.5% | 8,319 | 68.5% |
| Unknown | 0 | 0.0% | 32 | 1.1% | 56 | 2.0% | 40 | 1.2% | 267 | 9.0% | 395 | 3.3% |
| MINORITY | 17 | 18.3% | 622 | 20.8% | 699 | 24.5% | 954 | 29.4% | 1,136 | 38.5% | 3,428 | 28.2% |
| WOMEN AS A % OF TOTAL | Administrators | | Faculty | | Professionals | | Classified Staff | | GAs | | Total | |
| | Number | Percent | Number | Percent | Number | Percent | Number | Percent | Number | Percent | Number | Percent |
| WOMEN AS A % OF TOTAL | 49 | 52.7% | 1,257 | 42.0% | 1,626 | 56.9% | 1,922 | 59.2% | 1,330 | 45.1% | 6,184 | 50.9% |
| African American | 4 | 4.3% | 41 | 1.4% | 66 | 2.3% | 91 | 2.8% | 32 | 1.1% | 234 | 1.9% |
| American Indian | 0 | 0.0% | 13 | 0.4% | 15 | 0.5% | 45 | 1.4% | 11 | 0.4% | 84 | 0.7% |
| Asian American | 2 | 2.2% | 112 | 3.7% | 124 | 4.3% | 87 | 2.7% | 313 | 10.6% | 638 | 5.3% |
| Hispanic | 6 | 6.5% | 89 | 3.0% | 161 | 5.6% | 355 | 10.9% | 122 | 4.1% | 733 | 6.0% |
| White | 37 | 39.8% | 991 | 33.1% | 1,227 | 42.9% | 1,325 | 40.8% | 763 | 25.9% | 4,343 | 35.8% |
| Unknown | 0 | 0.0% | 11 | 0.4% | 33 | 1.2% | 19 | 0.6% | 89 | 3.0% | 152 | 1.3% |
| MINORITY | 12 | 12.9% | 255 | 8.5% | 366 | 12.8% | 578 | 17.8% | 478 | 16.2% | 1,689 | 13.9% |

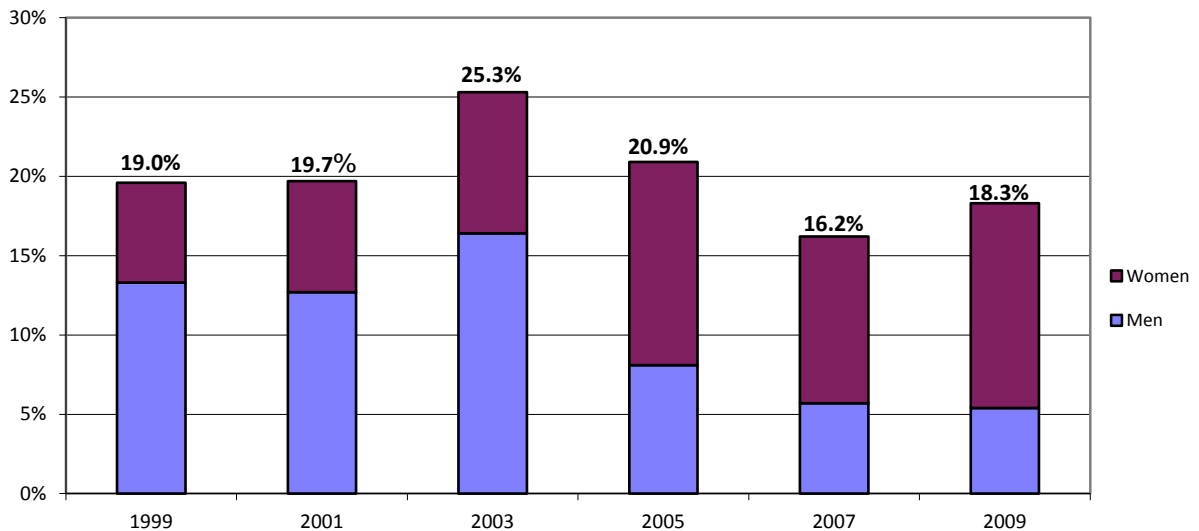


Administrators ASU Total University

(University employees in administrative positions who do not hold faculty rank.)

| | Fall 1999 | | Fall 2001 | | Fall 2003 | | Fall 2005 | | Fall 2007 | | Fall 2009 | |
|----------------------------------|-----------|---------------|-----------|---------------|-----------|---------------|-----------|---------------|------------|---------------|-----------|---------------|
| | Number | Percent | Number | Percent | Number | Percent | Number | Percent | Number | Percent | Number | Percent |
| TOTAL | 63 | 100.0% | 71 | 100.0% | 79 | 100.0% | 86 | 100.0% | 105 | 100.0% | 93 | 100.0% |
| African American | 5 | 7.9% | 7 | 9.9% | 9 | 11.4% | 9 | 10.5% | 7 | 6.7% | 7 | 7.5% |
| American Indian | 0 | 0.0% | 0 | 0.0% | 1 | 1.3% | 0 | 0.0% | 0 | 0.0% | 0 | 0.0% |
| Asian American | 0 | 0.0% | 1 | 1.4% | 2 | 2.5% | 2 | 2.3% | 2 | 1.9% | 3 | 3.2% |
| Hispanic | 7 | 11.1% | 6 | 8.5% | 8 | 10.1% | 7 | 8.1% | 8 | 7.6% | 7 | 7.5% |
| White | 51 | 81.0% | 57 | 80.3% | 59 | 74.7% | 68 | 79.1% | 88 | 83.8% | 76 | 81.7% |
| MINORITY | 12 | 19.0% | 14 | 19.7% | 20 | 25.3% | 18 | 20.9% | 17 | 16.2% | 17 | 18.3% |
| WOMEN AS A % OF TOTAL | 30 | 47.6% | 36 | 50.7% | 39 | 49.4% | 51 | 59.3% | 51 | 48.6% | 49 | 52.7% |
| African American | 2 | 3.2% | 2 | 2.8% | 3 | 3.8% | 5 | 5.8% | 4 | 3.8% | 4 | 4.3% |
| American Indian | 0 | 0.0% | 0 | 0.0% | 0 | 0.0% | 0 | 0.0% | 0 | 0.0% | 0 | 0.0% |
| Asian American | 0 | 0.0% | 1 | 1.4% | 2 | 2.5% | 2 | 2.3% | 1 | 1.0% | 2 | 2.2% |
| Hispanic | 2 | 3.2% | 2 | 2.8% | 2 | 2.5% | 4 | 4.7% | 6 | 5.7% | 6 | 6.5% |
| White | 26 | 41.3% | 31 | 43.7% | 32 | 40.5% | 40 | 46.5% | 40 | 38.1% | 37 | 39.8% |
| MINORITY | 4 | 6.3% | 5 | 7.0% | 7 | 8.9% | 11 | 12.8% | 11 | 10.5% | 12 | 12.9% |

Minority Percentage of Administrators

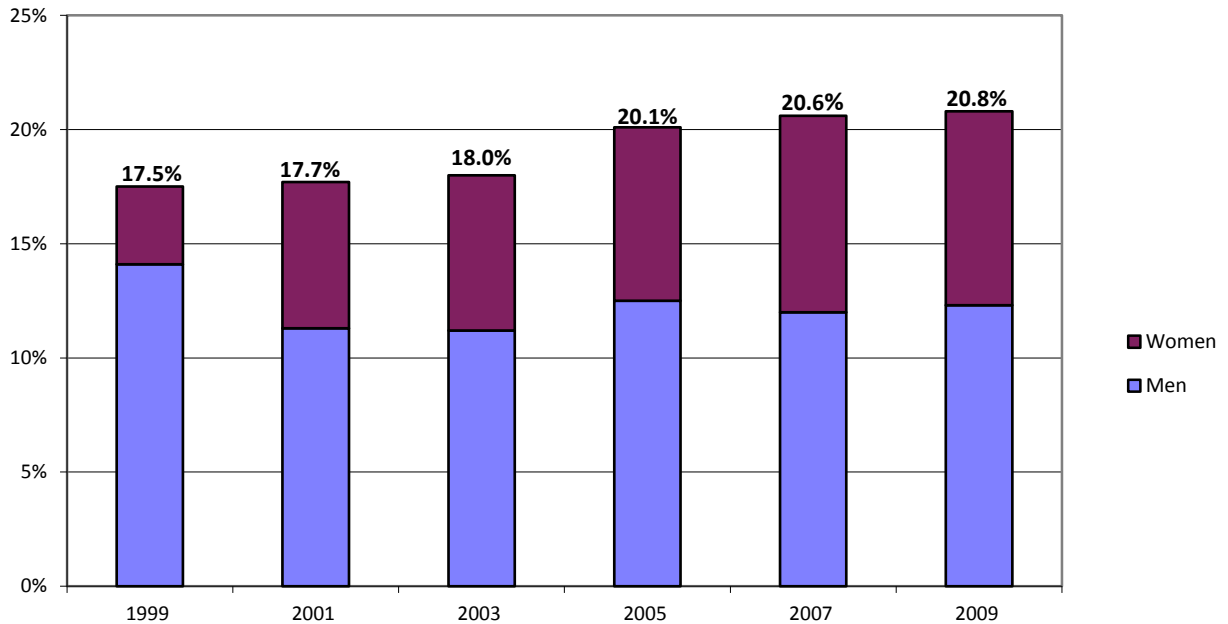


Faculty ASU Total University

(University employees holding a faculty rank of professor, associate professor, assistant professor, instructor, lecturer, or faculty associate, regardless of job title.)

| | Fall 1999 | | Fall 2001 | | Fall 2003 | | Fall 2005 | | Fall 2007 | | Fall 2009 | |
|----------------------------------|--------------|---------------|--------------|---------------|--------------|---------------|--------------|---------------|--------------|---------------|--------------|---------------|
| | Number | Percent | Number | Percent | Number | Percent | Number | Percent | Number | Percent | Number | Percent |
| TOTAL | 2,334 | 100.0% | 2,389 | 100.0% | 2,484 | 100.0% | 2,734 | 100.0% | 2,970 | 100.0% | 2,991 | 100.0% |
| African American | 71 | 3.0% | 61 | 2.6% | 60 | 2.4% | 65 | 2.4% | 76 | 2.6% | 71 | 2.4% |
| American Indian | 16 | 0.7% | 21 | 0.9% | 28 | 1.1% | 38 | 1.4% | 34 | 1.1% | 28 | 0.9% |
| Asian American | 168 | 7.2% | 186 | 7.8% | 196 | 7.9% | 248 | 9.1% | 291 | 9.8% | 318 | 10.6% |
| Hispanic | 153 | 6.6% | 156 | 6.5% | 164 | 6.6% | 198 | 7.2% | 210 | 7.1% | 205 | 6.9% |
| White | 1,926 | 82.5% | 1,965 | 82.3% | 2,036 | 82.0% | 2,185 | 79.9% | 2,344 | 78.9% | 2,337 | 78.1% |
| Unknown | N/A | | N/A | | N/A | | N/A | | 15 | 0.5% | 32 | 1.1% |
| MINORITY | 408 | 17.5% | 424 | 17.7% | 448 | 18.0% | 549 | 20.1% | 611 | 20.6% | 622 | 20.8% |
| WOMEN AS A % OF TOTAL | Fall 1999 | | Fall 2001 | | Fall 2003 | | Fall 2005 | | Fall 2007 | | Fall 2009 | |
| | Number | Percent | Number | Percent | Number | Percent | Number | Percent | Number | Percent | Number | Percent |
| WOMEN AS A % OF TOTAL | 866 | 37.1% | 903 | 37.8% | 981 | 39.5% | 1,091 | 39.9% | 1,239 | 41.7% | 1,257 | 42.0% |
| African American | 33 | 1.4% | 26 | 1.1% | 28 | 1.1% | 31 | 1.1% | 44 | 1.5% | 41 | 1.4% |
| American Indian | 6 | 0.3% | 10 | 0.4% | 12 | 0.5% | 15 | 0.5% | 15 | 0.5% | 13 | 0.4% |
| Asian American | 41 | 1.8% | 47 | 2.0% | 59 | 2.4% | 80 | 2.9% | 100 | 3.4% | 112 | 3.7% |
| Hispanic | 66 | 2.8% | 70 | 2.9% | 71 | 2.9% | 81 | 3.0% | 95 | 3.2% | 89 | 3.0% |
| White | 720 | 30.8% | 750 | 31.4% | 811 | 32.6% | 884 | 32.3% | 980 | 33.0% | 991 | 33.1% |
| Unknown | N/A | | N/A | | N/A | | N/A | | 5 | 0.2% | 11 | 0.4% |
| MINORITY | 80 | 3.4% | 153 | 6.4% | 170 | 6.8% | 207 | 7.6% | 254 | 8.6% | 255 | 8.5% |

Minority Percentage of Faculty



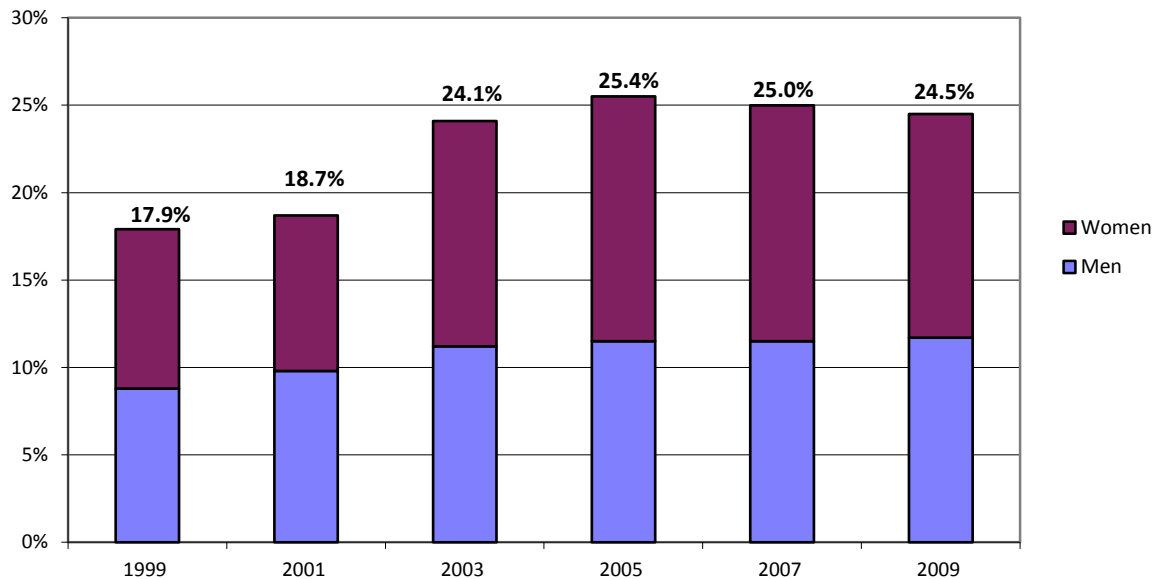
Professionals

ASU Total University

(University employees including academic advisors, postdoctoral scholars, librarians, computer systems analysts, research support staff, and business professionals.)

| | Fall 1999 | | Fall 2001 | | Fall 2003 | | Fall 2005 | | Fall 2007 | | Fall 2009 | |
|------------------------------|--------------|---------------|--------------|---------------|--------------|---------------|--------------|---------------|--------------|---------------|--------------|---------------|
| | Number | Percent | Number | Percent | Number | Percent | Number | Percent | Number | Percent | Number | Percent |
| TOTAL | 1,106 | 100.0% | 1,254 | 100.0% | 1,535 | 100.0% | 1,897 | 100.0% | 2,525 | 100.0% | 2,858 | 100.0% |
| African American | 40 | 3.6% | 45 | 3.6% | 65 | 4.2% | 76 | 4.0% | 105 | 4.2% | 117 | 4.1% |
| American Indian | 18 | 1.6% | 18 | 1.4% | 21 | 1.4% | 20 | 1.1% | 29 | 1.1% | 30 | 1.0% |
| Asian American | 59 | 5.3% | 86 | 6.9% | 134 | 8.7% | 185 | 9.8% | 246 | 9.7% | 291 | 10.2% |
| Hispanic | 81 | 7.3% | 85 | 6.8% | 150 | 9.8% | 201 | 10.6% | 252 | 10.0% | 261 | 9.1% |
| White | 908 | 82.1% | 1,020 | 81.3% | 1,165 | 75.9% | 1,415 | 74.6% | 1,878 | 74.4% | 2,103 | 73.6% |
| Unknown | N/A | | N/A | | N/A | | N/A | | 15 | 0.6% | 56 | 2.0% |
| MINORITY | 198 | 17.9% | 234 | 18.7% | 370 | 24.1% | 482 | 25.4% | 632 | 25.0% | 699 | 24.5% |
| WOMEN AS A % OF TOTAL | Fall 1999 | | Fall 2001 | | Fall 2003 | | Fall 2005 | | Fall 2007 | | Fall 2009 | |
| | Number | Percent | Number | Percent | Number | Percent | Number | Percent | Number | Percent | Number | Percent |
| | 576 | 52.1% | 675 | 53.8% | 839 | 54.7% | 1,057 | 55.7% | 1,394 | 55.2% | 1,626 | 56.9% |
| African American | 20 | 1.8% | 18 | 1.4% | 32 | 2.1% | 41 | 2.2% | 60 | 2.4% | 66 | 2.3% |
| American Indian | 9 | 0.8% | 9 | 0.7% | 12 | 0.8% | 11 | 0.6% | 16 | 0.6% | 15 | 0.5% |
| Asian American | 22 | 2.0% | 34 | 2.7% | 45 | 2.9% | 75 | 4.0% | 111 | 4.4% | 124 | 4.3% |
| Hispanic | 50 | 4.5% | 51 | 4.1% | 109 | 7.1% | 138 | 7.3% | 154 | 6.1% | 161 | 5.6% |
| White | 475 | 42.9% | 563 | 44.9% | 641 | 41.8% | 792 | 41.8% | 1,046 | 41.4% | 1,227 | 42.9% |
| Unknown | N/A | | N/A | | N/A | | N/A | | 7 | 0.3% | 33 | 1.2% |
| MINORITY | 101 | 9.1% | 112 | 8.9% | 198 | 12.9% | 265 | 14.0% | 341 | 13.5% | 366 | 12.8% |

Minority Percentage of Professionals

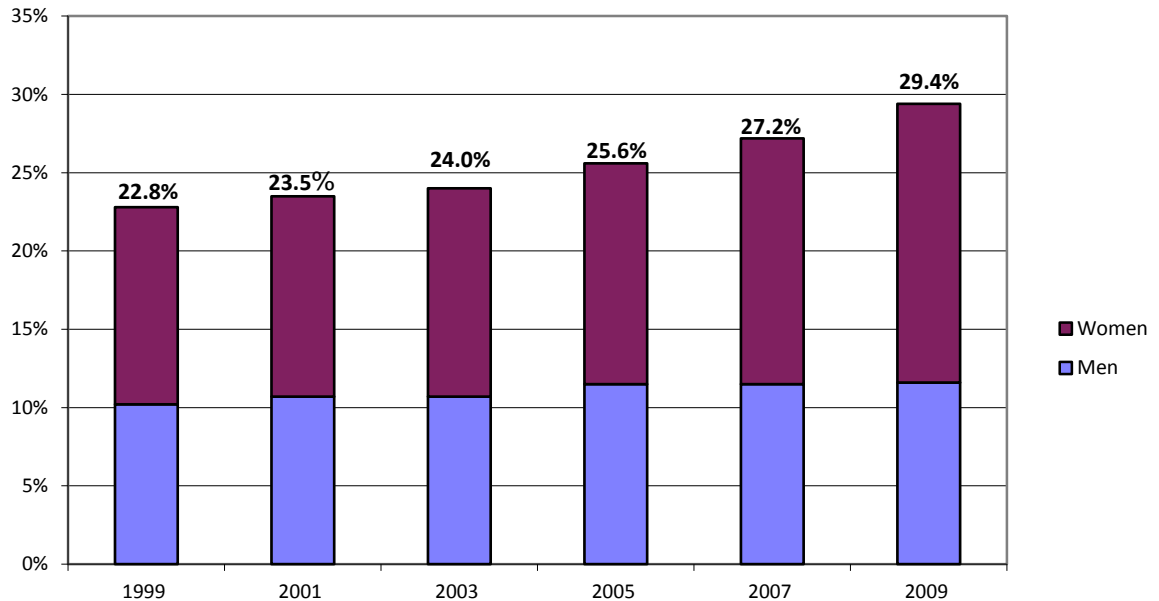


Classified Staff ASU Total University

(Other Staff include office support, skilled crafts, and service/maintenance staff.)

| | Fall 1999 | | Fall 2001 | | Fall 2003 | | Fall 2005 | | Fall 2007 | | Fall 2009 | |
|----------------------------------|--------------|---------------|--------------|---------------|--------------|---------------|--------------|---------------|--------------|---------------|--------------|---------------|
| | Number | Percent | Number | Percent | Number | Percent | Number | Percent | Number | Percent | Number | Percent |
| TOTAL | 4,879 | 100.0% | 4,830 | 100.0% | 4,826 | 100.0% | 4,764 | 100.0% | 4,281 | 100.0% | 3,249 | 100.0% |
| African American | 210 | 4.3% | 182 | 3.8% | 191 | 4.0% | 210 | 4.4% | 191 | 4.5% | 150 | 4.6% |
| American Indian | 111 | 2.3% | 118 | 2.4% | 111 | 2.3% | 130 | 2.7% | 121 | 2.8% | 85 | 2.6% |
| Asian American | 139 | 2.8% | 161 | 3.3% | 177 | 3.7% | 178 | 3.7% | 161 | 3.8% | 122 | 3.8% |
| Hispanic | 652 | 13.4% | 672 | 13.9% | 678 | 14.0% | 702 | 14.7% | 690 | 16.1% | 597 | 18.4% |
| White | 3,767 | 77.2% | 3,697 | 76.5% | 3,669 | 76.0% | 3,544 | 74.4% | 3,106 | 72.6% | 2,255 | 69.4% |
| Unknown | N/A | | N/A | | N/A | | N/A | | 12 | 0.3% | 40 | 1.2% |
| MINORITY | 1,112 | 22.8% | 1,133 | 23.5% | 1,157 | 24.0% | 1,220 | 25.6% | 1,163 | 27.2% | 954 | 29.4% |
| WOMEN AS A % OF TOTAL | Fall 1999 | | Fall 2001 | | Fall 2003 | | Fall 2005 | | Fall 2007 | | Fall 2009 | |
| | Number | Percent | Number | Percent | Number | Percent | Number | Percent | Number | Percent | Number | Percent |
| % OF TOTAL | 2,799 | 57.4% | 2,694 | 55.8% | 2,723 | 56.4% | 2,668 | 56.0% | 2,432 | 56.8% | 1,922 | 59.2% |
| African American | 109 | 2.2% | 96 | 2.0% | 106 | 2.2% | 115 | 2.4% | 112 | 2.6% | 91 | 2.8% |
| American Indian | 59 | 1.2% | 57 | 1.2% | 59 | 1.2% | 70 | 1.5% | 60 | 1.4% | 45 | 1.4% |
| Asian American | 91 | 1.9% | 102 | 2.1% | 100 | 2.1% | 104 | 2.2% | 108 | 2.5% | 87 | 2.7% |
| Hispanic | 355 | 7.3% | 364 | 7.5% | 376 | 7.8% | 381 | 8.0% | 393 | 9.2% | 355 | 10.9% |
| White | 2,185 | 44.8% | 2,075 | 43.0% | 2,082 | 43.1% | 1,998 | 41.9% | 1,751 | 40.9% | 1,325 | 40.8% |
| Unknown | N/A | | N/A | | N/A | | N/A | | 8 | 0.2% | 19 | 0.6% |
| MINORITY | 614 | 12.6% | 619 | 12.8% | 641 | 13.3% | 670 | 14.1% | 673 | 15.7% | 578 | 17.8% |

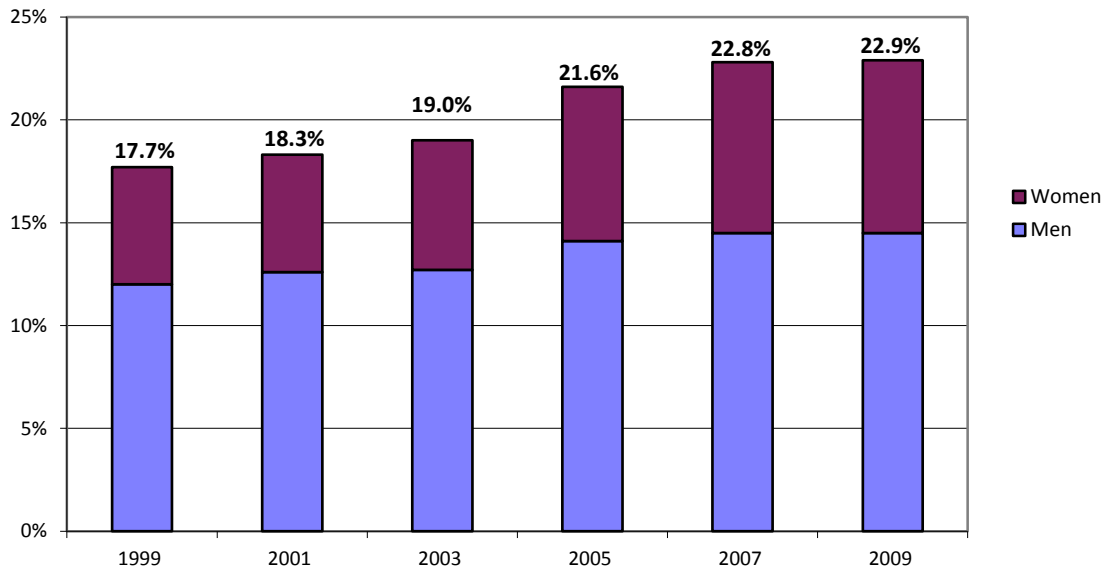
Minority Percentage of Classified Staff



Tenured/Tenure-Track Faculty ASU Total University

| | Fall 1999 | | Fall 2001 | | Fall 2003 | | Fall 2005 | | Fall 2007 | | Fall 2009 | |
|----------------------------------|--------------|---------------|--------------|---------------|--------------|---------------|--------------|---------------|--------------|---------------|--------------|---------------|
| | Number | Percent | Number | Percent | Number | Percent | Number | Percent | Number | Percent | Number | Percent |
| TOTAL | 1,635 | 100.0% | 1,657 | 100.0% | 1,665 | 100.0% | 1,758 | 100.0% | 1,824 | 100.0% | 1,841 | 100.0% |
| African American | 46 | 2.8% | 43 | 2.6% | 47 | 2.8% | 49 | 2.8% | 50 | 2.7% | 45 | 2.4% |
| American Indian | 15 | 0.9% | 17 | 1.0% | 18 | 1.1% | 27 | 1.5% | 25 | 1.4% | 19 | 1.0% |
| Asian American | 112 | 6.9% | 130 | 7.8% | 133 | 8.0% | 166 | 9.4% | 198 | 10.9% | 210 | 11.4% |
| Hispanic | 116 | 7.1% | 114 | 6.9% | 118 | 7.1% | 137 | 7.8% | 143 | 7.8% | 148 | 8.0% |
| White | 1,346 | 82.3% | 1,353 | 81.7% | 1,349 | 81.0% | 1,379 | 78.4% | 1,403 | 76.9% | 1,403 | 76.2% |
| Unknown | N/A | | N/A | | N/A | | N/A | | 5 | 0.3% | 16 | 0.9% |
| MINORITY | 289 | 17.7% | 304 | 18.3% | 316 | 19.0% | 379 | 21.6% | 416 | 22.8% | 422 | 22.9% |
| WOMEN AS A % OF TOTAL | Fall 1999 | | Fall 2001 | | Fall 2003 | | Fall 2005 | | Fall 2007 | | Fall 2009 | |
| | Number | Percent | Number | Percent | Number | Percent | Number | Percent | Number | Percent | Number | Percent |
| | 493 | 30.2% | 508 | 30.7% | 533 | 32.0% | 588 | 33.4% | 625 | 34.3% | 631 | 34.3% |
| African American | 19 | 1.2% | 18 | 1.1% | 20 | 1.2% | 24 | 1.4% | 23 | 1.3% | 20 | 1.1% |
| American Indian | 6 | 0.4% | 9 | 0.5% | 9 | 0.5% | 11 | 0.6% | 9 | 0.5% | 8 | 0.4% |
| Asian American | 25 | 1.5% | 24 | 1.4% | 31 | 1.9% | 44 | 2.5% | 60 | 3.3% | 67 | 3.6% |
| Hispanic | 44 | 2.7% | 43 | 2.6% | 45 | 2.7% | 52 | 3.0% | 59 | 3.2% | 59 | 3.2% |
| White | 399 | 24.4% | 414 | 25.0% | 428 | 25.7% | 457 | 26.0% | 472 | 25.9% | 471 | 25.6% |
| Unknown | N/A | | N/A | | N/A | | N/A | | 2 | 0.1% | 6 | 0.3% |
| MINORITY | 94 | 5.7% | 94 | 5.7% | 105 | 6.3% | 131 | 7.5% | 151 | 8.3% | 154 | 8.4% |

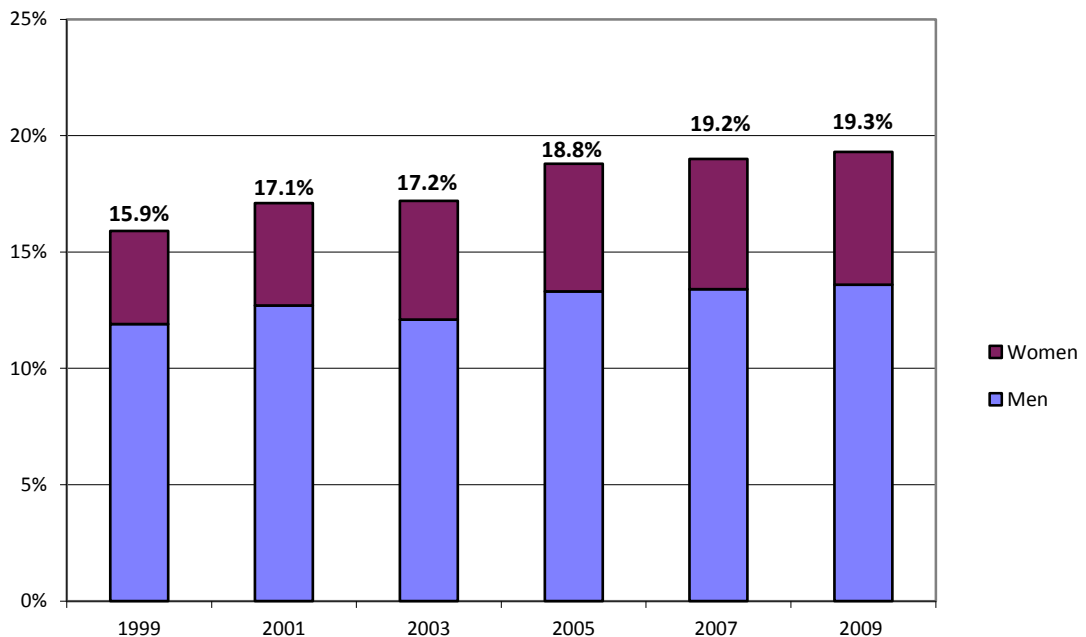
Minority Percentage of Tenured/Tenure-Track Faculty



Tenured Faculty ASU Total University

| | Fall 1999 | | Fall 2001 | | Fall 2003 | | Fall 2005 | | Fall 2007 | | Fall 2009 | |
|----------------------------------|--------------|---------------|--------------|---------------|--------------|---------------|--------------|---------------|--------------|---------------|--------------|---------------|
| | Number | Percent | Number | Percent | Number | Percent | Number | Percent | Number | Percent | Number | Percent |
| TOTAL | 1,286 | 100.0% | 1,307 | 100.0% | 1,300 | 100.0% | 1,279 | 100.0% | 1,307 | 100.0% | 1,359 | 100.0% |
| African American | 32 | 2.5% | 29 | 2.2% | 34 | 2.6% | 33 | 2.6% | 35 | 2.7% | 33 | 2.4% |
| American Indian | 11 | 0.9% | 12 | 0.9% | 11 | 0.8% | 13 | 1.0% | 16 | 1.2% | 13 | 1.0% |
| Asian American | 76 | 5.9% | 91 | 7.0% | 94 | 7.2% | 102 | 8.0% | 107 | 8.2% | 117 | 8.6% |
| Hispanic | 86 | 6.7% | 91 | 7.0% | 85 | 6.5% | 92 | 7.2% | 93 | 7.1% | 99 | 7.3% |
| White | 1,081 | 84.1% | 1,084 | 82.9% | 1,076 | 82.8% | 1,039 | 81.2% | 1,055 | 80.7% | 1,090 | 80.2% |
| Unknown | N/A | | N/A | | N/A | | N/A | | 1 | 0.1% | 7 | 0.5% |
| MINORITY | 205 | 15.9% | 223 | 17.1% | 224 | 17.2% | 240 | 18.8% | 251 | 19.2% | 262 | 19.3% |
| WOMEN AS A % OF TOTAL | Fall 1999 | | Fall 2001 | | Fall 2003 | | Fall 2005 | | Fall 2007 | | Fall 2009 | |
| | Number | Percent | Number | Percent | Number | Percent | Number | Percent | Number | Percent | Number | Percent |
| | 309 | 24.0% | 342 | 26.2% | 360 | 27.7% | 368 | 28.8% | 388 | 29.7% | 410 | 30.2% |
| African American | 12 | 0.9% | 11 | 0.8% | 14 | 1.1% | 13 | 1.0% | 13 | 1.0% | 12 | 0.9% |
| American Indian | 3 | 0.2% | 4 | 0.3% | 4 | 0.3% | 4 | 0.3% | 4 | 0.3% | 4 | 0.3% |
| Asian American | 9 | 0.7% | 11 | 0.8% | 18 | 1.4% | 21 | 1.6% | 22 | 1.7% | 27 | 2.0% |
| Hispanic | 28 | 2.2% | 32 | 2.4% | 30 | 2.3% | 32 | 2.5% | 34 | 2.6% | 34 | 2.5% |
| White | 257 | 20.0% | 284 | 21.7% | 294 | 22.6% | 298 | 23.3% | 314 | 24.0% | 332 | 24.4% |
| Unknown | N/A | | N/A | | N/A | | N/A | | 1 | 0.1% | 1 | 0.1% |
| MINORITY | 52 | 4.0% | 58 | 4.4% | 66 | 5.1% | 70 | 5.5% | 73 | 5.6% | 77 | 5.7% |

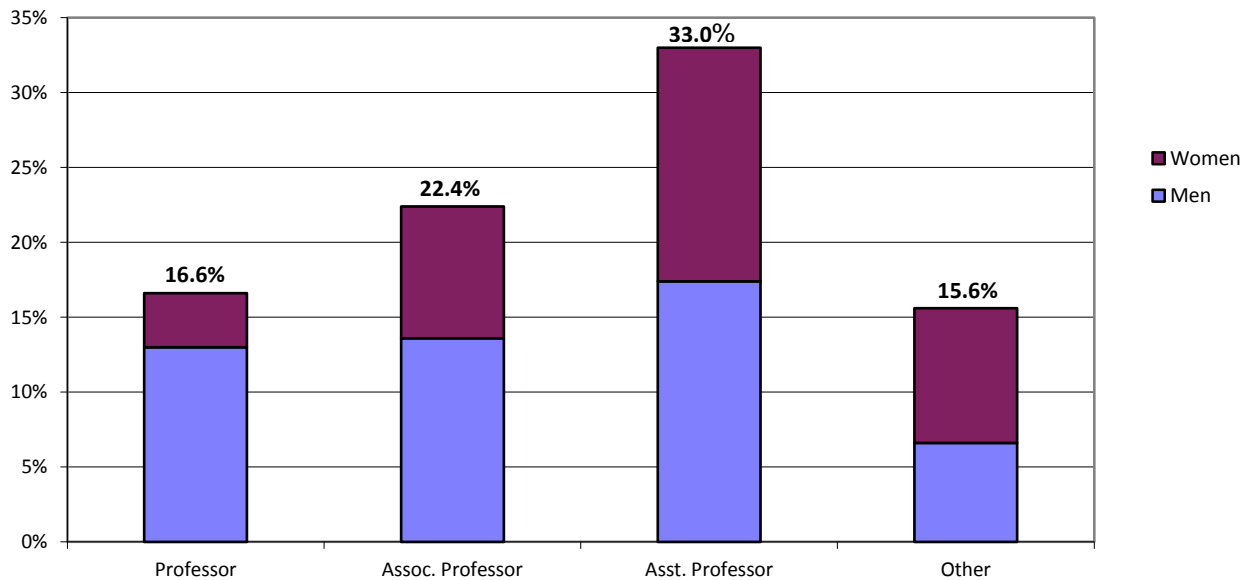
Minority Percentage of Tenured Faculty



Fall 2009 Faculty Rank ASU Total University

| | Professor | | Associate | | Assistant | | Other | | Total | |
|----------------------------------|------------|---------------|------------|---------------|------------|---------------|------------|---------------|--------------|---------------|
| | Number | Percent | Number | Percent | Number | Percent | Number | Percent | Number | Percent |
| TOTAL | 954 | 100.0% | 656 | 100.0% | 585 | 100.0% | 796 | 100.0% | 2,991 | 100.0% |
| African American | 19 | 2.0% | 21 | 3.2% | 16 | 2.7% | 15 | 1.9% | 71 | 2.4% |
| American Indian | 13 | 1.4% | 3 | 0.5% | 6 | 1.0% | 6 | 0.8% | 28 | 0.9% |
| Asian American | 71 | 7.4% | 69 | 10.5% | 116 | 19.8% | 62 | 7.8% | 318 | 10.6% |
| Hispanic | 55 | 5.8% | 54 | 8.2% | 55 | 9.4% | 41 | 5.2% | 205 | 6.9% |
| White | 788 | 82.6% | 507 | 77.3% | 380 | 65.0% | 662 | 83.2% | 2,337 | 78.1% |
| Unknown | 8 | 0.8% | 2 | 0.3% | 12 | 2.1% | 10 | 1.3% | 32 | 1.1% |
| MINORITY | 158 | 16.6% | 147 | 22.4% | 193 | 33.0% | 124 | 15.6% | 622 | 20.8% |
| WOMEN AS A % OF TOTAL | Professor | | Associate | | Assistant | | Other | | Total | |
| | Number | Percent | Number | Percent | Number | Percent | Number | Percent | Number | Percent |
| % OF TOTAL | 230 | 24.1% | 275 | 41.9% | 280 | 47.9% | 472 | 59.3% | 1,257 | 42.0% |
| African American | 8 | 0.8% | 9 | 1.4% | 12 | 2.1% | 12 | 1.5% | 41 | 1.4% |
| American Indian | 3 | 0.3% | 1 | 0.2% | 4 | 0.7% | 5 | 0.6% | 13 | 0.4% |
| Asian American | 11 | 1.2% | 24 | 3.7% | 47 | 8.0% | 30 | 3.8% | 112 | 3.7% |
| Hispanic | 12 | 1.3% | 24 | 3.7% | 28 | 4.8% | 25 | 3.1% | 89 | 3.0% |
| White | 195 | 20.4% | 217 | 33.1% | 182 | 31.1% | 397 | 49.9% | 991 | 33.1% |
| Unknown | 1 | 0.1% | 0 | 0.0% | 7 | 1.2% | 3 | 0.4% | 11 | 0.4% |
| MINORITY | 34 | 3.6% | 58 | 8.8% | 91 | 15.6% | 72 | 9.0% | 255 | 8.5% |

Minority Percentage by Faculty Rank



GLOSSARY

ASU Students

First-time Freshmen

New degree-seeking undergraduates who graduated from high school the previous year and new freshmen with fewer than 12 transfer credits.

Lower-Division Transfers

New degree-seeking transfer students entering as freshmen or sophomores.

Upper-Division Transfers

New degree-seeking transfer students entering as juniors or seniors.

Persistence Rates

The percentage of full-time first-time freshmen, lower-division transfers, or upper-division transfers entering in a given fall semester who enrolled the following fall semester (i.e., one year after entry). When computing persistence rates, per federal reporting guidelines, students are excluded if they left the university due to death, permanent disability, military activation, or church mission service.

Graduation Rates

The percentage of full-time first-time freshmen entering in a given fall semester who graduated within six years (i.e., prior to the sixth fall semester after entry), the percentage of full-time lower-division transfers entering in a given fall semester who graduated within five years, or the percentage of full-time upper-division transfers entering in a given fall semester who graduated within four years. When computing graduation rates, per federal reporting guidelines students are excluded if they left the university due to death, permanent disability, military activation, or church mission service.

ASU Employees

Administrators

University employees in administrative positions who do not hold faculty rank.

Faculty

University employees holding a faculty rank of professor, associate professor, assistant professor, instructor, lecturer, or faculty associate, regardless of job title.

Tenured/Tenure-Track Faculty

Faculty who have been granted tenure or will have the opportunity to be reviewed for tenure.

Nontenured Faculty

Faculty who are not eligible for tenure review including clinical, research, adjunct, and visiting faculty.

Professionals

University employees including academic advisors, postdoctoral scholars, librarians, computer systems analysts, research support staff, and business professionals.

Classified Staff

University employees including office support staff, service/maintenance staff, accountants, buyers, editors, events coordinators, and research technicians.